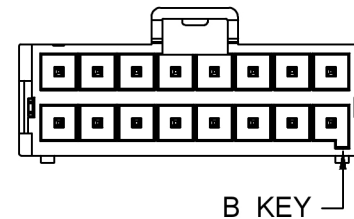
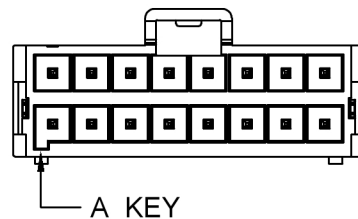
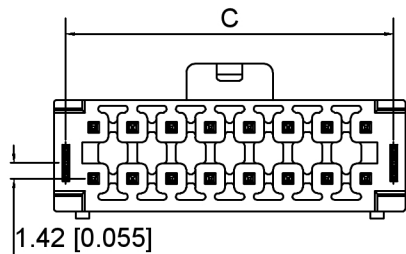


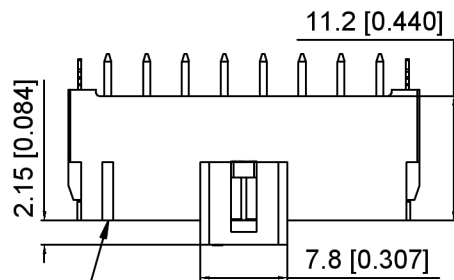
Specifications:

规格:
 Voltage rating:600V AC/DC
 额定电压: 600V AC/DC
 Current rating:14A AC/DC
 额定电流: 14A AC/DC
 Withstanding voltage:1500V AC/minute
 耐受电压: 1500V AC/分钟
 Temperature range:-40℃~+105℃
 温度范围: -40℃~+105℃
 Insulation resistance:1000MΩ min
 绝缘电阻: 1000MΩ Min
 Contact resistance:15mΩ Max
 接触电阻: 15mΩ Max

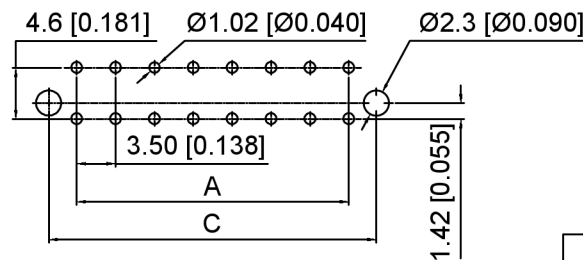


X3501 W V - 2xXX X -LP SN
 ① ② ③ ④ ⑤ ⑥ ⑦

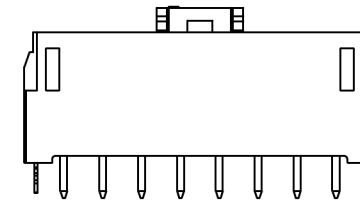
- 1.Series No
- 2.Category:W-Wafer
- 3.Welding Board Angle:V-Straight 180°
- 4.Row No.Pin No:2xXX-2x02~2x12P
- 5.Category:A Key Black ; B Key Nature
- 6.Material:LP-LCP UL94V-0
- 7.Plating:SN-Tin Plated or V01-Gold Flash



First Circuit mark
 (not showing on 4 and 6
 Circuits series)



PCB Layout



| Poles | Dimensions | | |
|-------|------------|-------|-------|
| | A | B | C |
| 2x02 | 3.50 | 10.60 | 8.50 |
| 2x03 | 7.00 | 14.10 | 12.00 |
| 2x04 | 10.50 | 17.60 | 15.50 |
| 2x05 | 14.00 | 21.10 | 19.00 |
| 2x06 | 17.50 | 24.60 | 22.50 |
| 2x07 | 21.00 | 28.10 | 26.00 |
| 2x08 | 24.50 | 31.60 | 29.50 |
| 2x12 | 28.50 | 45.60 | 43.50 |

| | | | | |
|--------------------|----------|---------------|----------|------------------------------|
| X3501WV-2xXXX-LPSN | LCP | Copper Alloy | WV-2xXXA | X3501H-2xXXA / X3501H-2xXXA0 |
| | | | WV-2xXXB | X3501H-2xXXB / X3501H-2xXXB0 |
| PART NO | Material | Material(Pin) | Category | Suitable XKB Housing |

广东星坤科技股份有限公司
 文件工程章

| REVISIONS | DATE | REVISED | APPROVED | UNSPECIFIED TOLERANCES |
|-------------|------|---------|----------|------------------------|
| ANGLAR | | | | ±5° |
| L ≤ 4 | | | | ±0.2 |
| 4 < L ≤ 16 | | | | ±0.3 |
| 16 < L ≤ 63 | | | | ±0.4 |
| L > 63 | | | | ±0.5 |

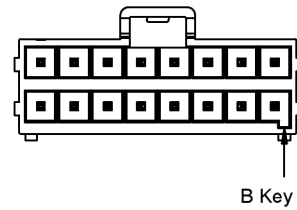
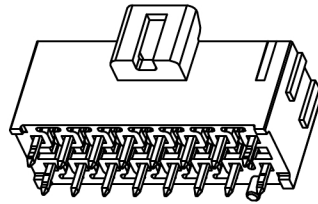
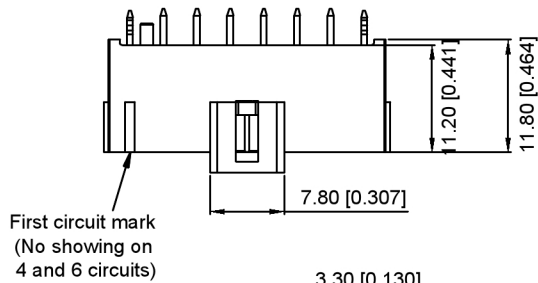
DSND
 DWN
 CHKD
 APPD

SCALE: N/A
 VIEW:
 UNIT: mm/in
 SIZE: A4

XKB

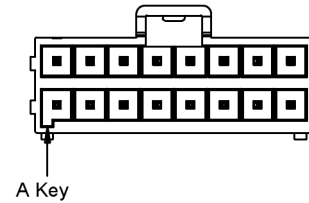
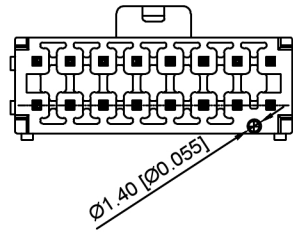
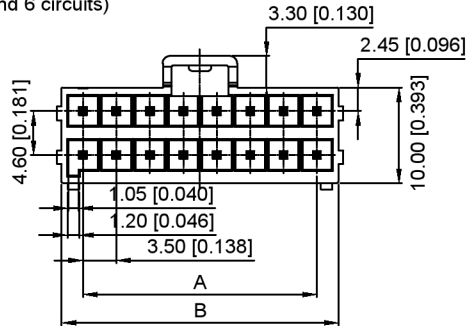
XKB INDUSTRIAL PRECISION CO., LIMITED

| | | |
|--|-------|----------|
| MODEL TYPE: 3.5mm Crimp Style Connector | | |
| PART NO.: X3501WV-2xXXX-LPSN | | |
| DWG NO.: X-X3501WV-2xXXX-LPSN | | |
| WEIGHT | SHEET | REVISION |
| | 1/1 | A0 |



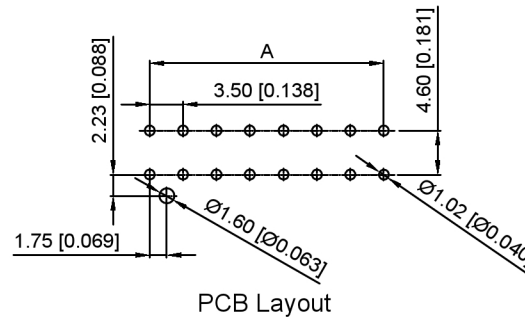
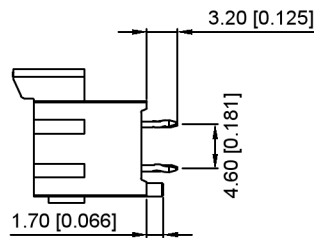
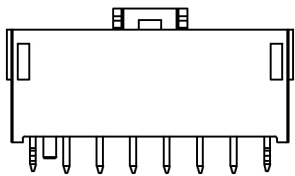
Specifications:

规格:
 Voltage rating:400V AC/DC
 额定电压: 400V AC/DC
 Current rating:14A AC/DC
 额定电流: 14A AC/DC
 Withstanding voltage:1500V AC/minute
 耐受电压: 1500V AC/分钟
 Temperature range:-40℃~+105℃
 温度范围: -40℃~+105℃
 Insulation resistance:1000MΩ min
 绝缘电阻: 1000MΩ Min
 Contact resistance:15mΩ Max
 接触电阻: 15mΩ Max

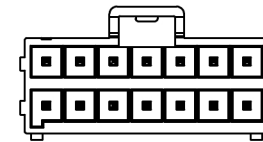
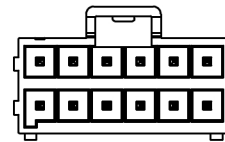
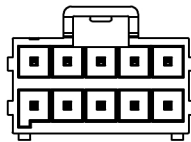
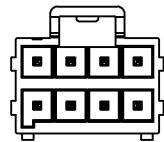
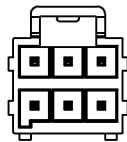
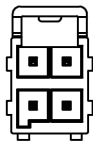


X3501 W V - 2xXX X S - LP SN
 ① ② ③ ④ ⑤ ⑥ ⑦ ⑧

- Series No
- Category:W-Wafer
- Welding Board Angle:V-Stright 180°
- Row No.Pin No:2xXX-2x02~2x12P
- Type:A Key Black ; B Key Nature
- TYPE:S-With positioning column
- Material:LP-LCP UL94V-0
- Plating:SN-Tin Plated
V01-Gold Flash



| Poles | Dimensions | |
|-------|------------|-------|
| | A | B |
| 2x02 | 3.50 | 8.00 |
| 2x03 | 7.00 | 11.50 |
| 2x04 | 10.50 | 15.00 |
| 2x05 | 14.00 | 18.50 |
| 2x06 | 17.50 | 22.00 |
| 2x07 | 21.00 | 25.50 |
| 2x08 | 24.50 | 29.00 |
| 2x12 | 38.50 | 43.00 |



| | | | | |
|--------------------|----------|---------------|-----------|------------------------------|
| X3501WV-2xXXS-LPSN | LCP | Copper Alloy | WV-2xXXAS | X3501H-2xXXA / X3501H-2xXXA0 |
| PART NO | Material | Material(Pin) | Category | Suitable XKB Housing |

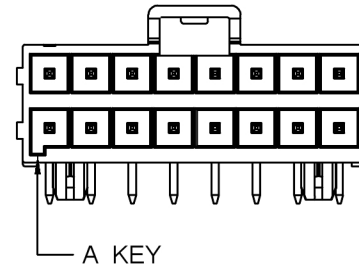
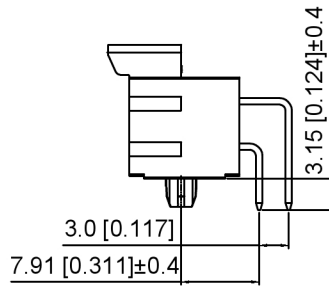
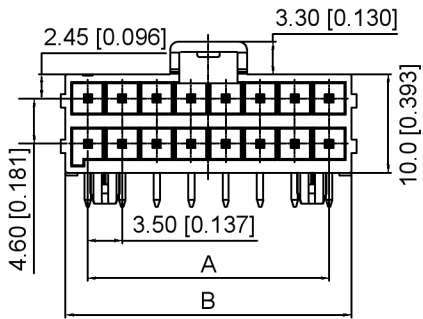
广东星坤科技股份有限公司

| MARK | DESCRIPTION | DATE | REVISED | APPROVED | UNSPECIFIED TOLERANCES |
|------|-------------|------|---------|----------|------------------------|
| △X | | | | | ANGULAR ±5° |
| △X | | | | | L ≤ 4 ±0.2 |
| △X | | | | | 4 < L ≤ 16 ±0.3 |
| | | | | | 16 < L ≤ 63 ±0.4 |
| | | | | | L > 63 ±0.5 |



| | | |
|------|-------------|--|
| DSND | SCALE: N/A | MODEL TYPE: 3.5mm Crimp Style Connector |
| DWN | VIEW: | PART NO.: X3501WV-2xXXS-LPSN |
| CHKD | UNIT: mm/in | DWG NO.: X-X3501WV-2xXXS-LPSN |
| APPD | SIZE: A4 | WEIGHT SHEET REVISION 1/1 A0 |

文件工程章



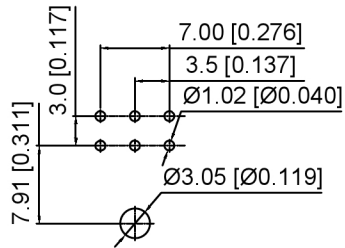
Specifications:

规格:
 Voltage rating:400V AC/DC
 额定电压: 400V AC/DC
 Current rating:14A AC/DC
 额定电流: 14A AC/DC
 Withstanding voltage:1800V AC/minute
 耐受电压: 1800V AC/分钟
 Temperature range:-40°C~+105°C
 温度范围: -40°C~+105°C
 Insulation resistance:1000MΩ min
 绝缘电阻: 1000MΩ Min
 Contact resistance:15mΩ Max
 接触电阻: 15mΩ Max

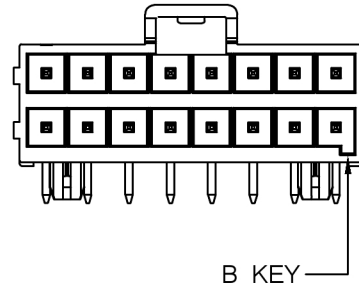
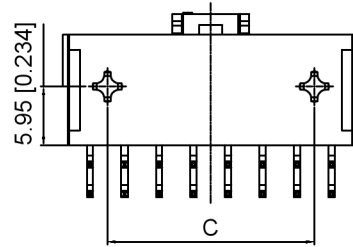
X3501 W R - 2xXX X-LP SN

- ①
- ②
- ③
- ④
- ⑤
- ⑥
- ⑦

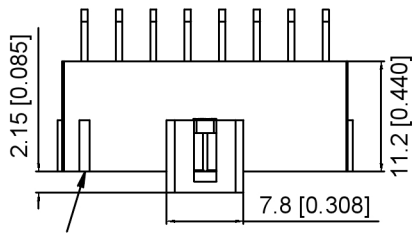
- 1.Series No
- 2.Category:W-Wafer
- 3.Welding Board Angle:R-Stright 90°
- 4.Row No.Pin No:2xXX-2x02~2x08P
- 5.Category:A Key Black ; B Key Nature
- 6.Material:LP-LCP UL94V-0
- 7.Plating:SN-Tin Plated or V01-Gold Flash



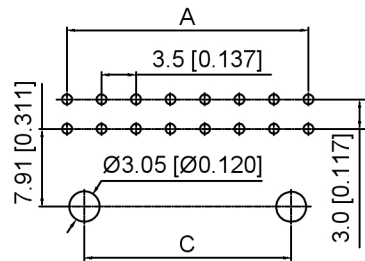
PCB Layout (4-6P)



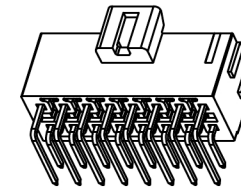
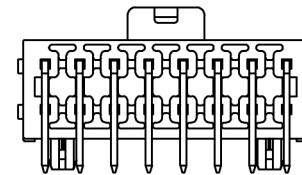
B KEY



First Circuit mark
(not showing on 4 and 6
Circuits series)



PCB Layout (8-16P)



| Poles | Dimensions | | |
|-------|------------|-------|-------|
| | A | B | C |
| 2x02 | 3.50 | 8.00 | / |
| 2x03 | 7.00 | 11.50 | / |
| 2x04 | 10.50 | 15.00 | 7.00 |
| 2x05 | 14.00 | 18.50 | 10.50 |
| 2x06 | 17.50 | 22.00 | 14.00 |
| 2x07 | 21.00 | 25.50 | 17.50 |
| 2x08 | 24.50 | 29.00 | 21.00 |

| | | | | |
|--------------------|----------|---------------|----------|------------------------------|
| X3501WR-2xXXX-LPSN | LCP | Copper Alloy | WR-2xXXA | X3501H-2xXXA / X3501H-2xXXA0 |
| PART NO | Material | Material(Pin) | WR-2xXXB | X3501H-2xXXB / X3501H-2xXXB0 |
| | | | Category | Suitable XKB Housing |

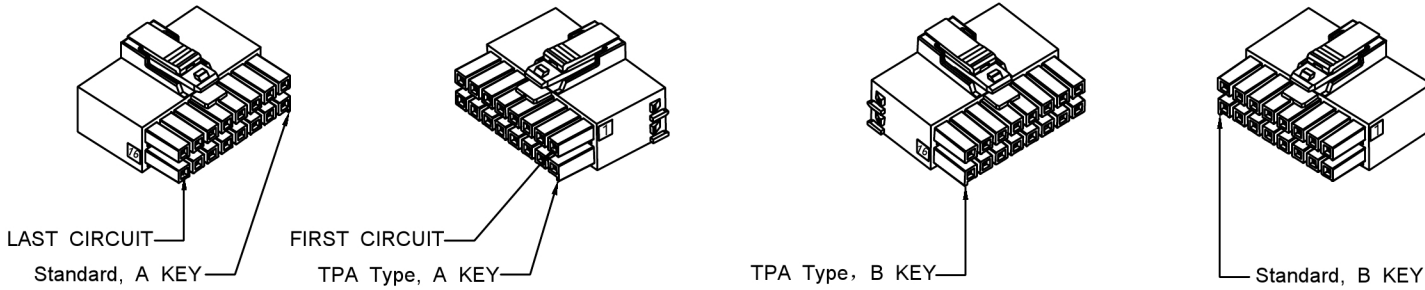
广东星坤科技股份有限公司

| MARK | DESCRIPTION | DATE | REVISED | APPROVED | UNSPECIFIED TOLERANCES |
|------|-------------|------|---------|----------|------------------------|
| Δx | | | | | ANGLAR ±5° |
| Δx | | | | | L ≤ 4 ±0.2 |
| Δx | | | | | 4 < L ≤ 16 ±0.3 |
| | | | | | 16 < L ≤ 63 ±0.4 |
| | | | | | L > 63 ±0.5 |



| | | | |
|------|--|-------------|--|
| DSND | | SCALE: N/A | MODEL TYPE: 3.5mm Crimp Style Connector |
| DWN | | VIEW: | PART NO.: X3501WR-2xXXX-LPSN |
| CHKD | | UNIT: mm/in | DWG NO.: X-X3501WR-2xXXX-LPSN |
| APPD | | SIZE: A4 | WEIGHT SHEET REVISION 1/1 A0 |

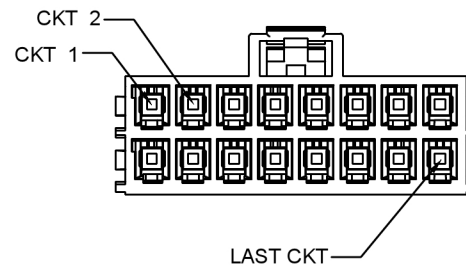
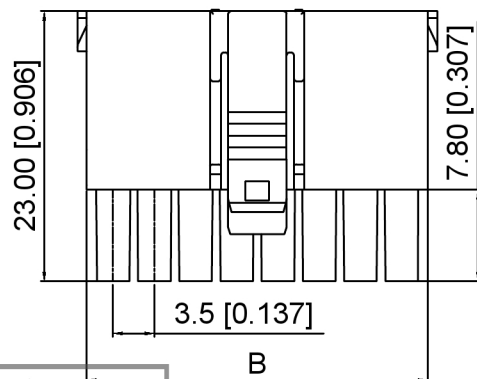
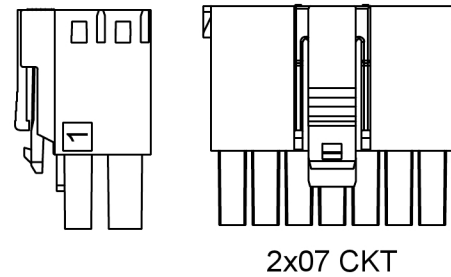
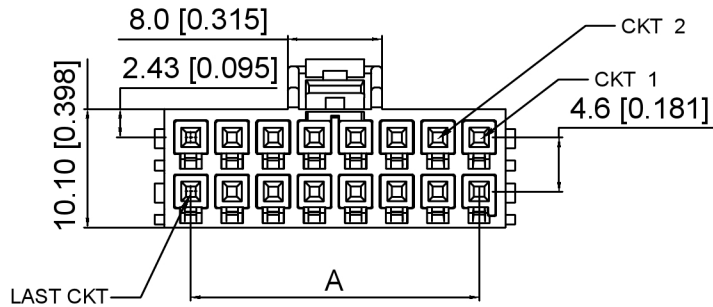
XKB INDUSTRIAL PRECISION CO., LIMITED



Specifications:
 规格:
 Voltage rating:400V AC/DC
 额定电压: 400V AC/DC
 Current rating:14A AC/DC
 额定电流: 14A AC/DC
 Withstanding voltage:1800V AC/minute
 耐受电压: 1800V AC/分钟
 Temperature range:-40℃~+105℃
 温度范围: -40℃~+105℃
 Insulation resistance:1000MΩ min
 绝缘电阻: 1000MΩ Min
 Contact resistance:10mΩ Max
 接触电阻: 10mΩ Max

X3501 H - 2xXX X - N0
 ① ② ③ ④ ⑤

- 1.Series No
- 2.Category:H-HSG
- 3.Row No.Pin No:2xXX-2x02~2x12P
- 4.Category:
 A:TPA Type, A KEY Black
 B:TPA Type, B KEY Nature
 A0:Standard, A KEY Black
 B0:Standard, B KEY Nature
- 5.Material:N0-Nylon UL94V-0



| Poles | Dimensions | |
|-------|------------|-------|
| | A | B |
| 2x02 | 3.50 | 8.00 |
| 2x03 | 7.00 | 11.50 |
| 2x04 | 10.50 | 15.00 |
| 2x05 | 14.00 | 18.50 |
| 2x06 | 17.50 | 22.00 |
| 2x07 | 21.00 | 25.50 |
| 2x08 | 24.50 | 29.00 |
| 2x12 | 38.50 | 43.00 |

| | | | | | |
|-----------------|----------|--------------------|--------------------|-----------------------|-------------------|
| X3501H-2xXXX-N0 | Nylon | H-2xXXA / H-2xXXA0 | X3501W-A | X3501T-A | X3501HL |
| | | H-2xXXB / H-2xXXB0 | X3501W-B | | |
| PART NO | Material | Category | Suitable XKB Wafer | Suitable XKB Terminal | Suitable XKB Lock |

广东星坤科技股份有限公司

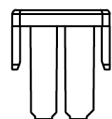
文件工程章

| MARK | DESCRIPTION | DATE | REVISED | APPROVED | UNSPECIFIED TOLERANCES |
|------|-------------|------|---------|----------|------------------------|
| Δx | | | | | ANGULAR ±5° |
| Δx | | | | | L ≤ 4 ±0.2 |
| Δx | | | | | 4 < L ≤ 16 ±0.3 |
| | | | | | 16 < L ≤ 63 ±0.4 |
| | | | | | L > 63 ±0.5 |

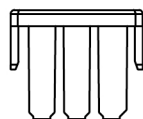
XKLB

KXB INDUSTRIAL PRECISION CO., LIMITED

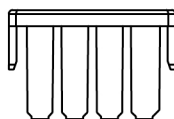
| | | |
|------|-------------|--|
| DSND | SCALE: N/A | MODEL TYPE: 3.5mm Crimp Style Connector |
| DWN | VIEW: | PART NO.: X3501H-2xXXX-N0 |
| CHKD | UNIT: mm/in | DWG NO.: X-X3501H-2xXXX-N0 |
| APPD | SIZE: A4 | WEIGHT |
| | | SHEET |
| | | REVISION |
| | | 1/1 |
| | | A0 |



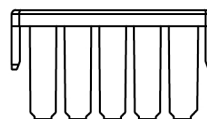
2 CKT



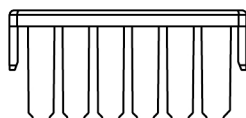
3 CKT



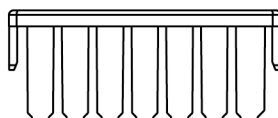
4 CKT



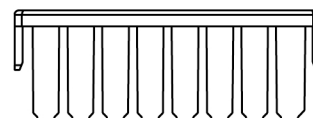
5 CKT



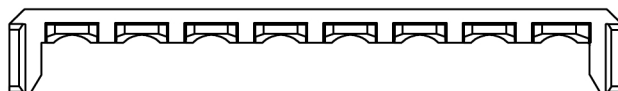
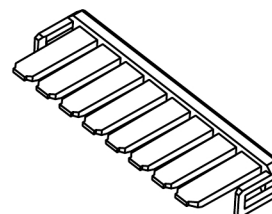
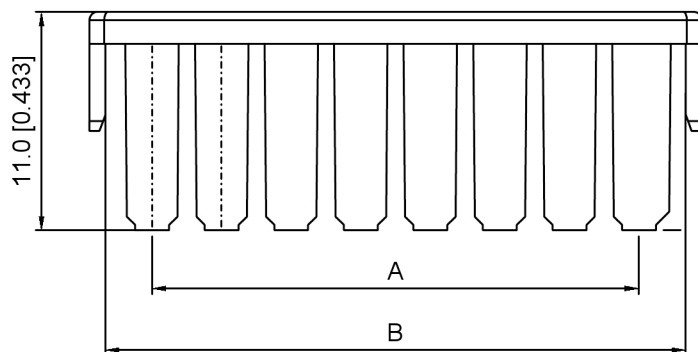
6 CKT



7 CKT



8 CKT



Specifications:

规格:

Voltage rating:400V AC/DC

额定电压: 400V AC/DC

Current rating: 14A AC/DC

额定电流: 14A AC/DC

Withstanding voltage:1800V AC/minute

耐受电压: 1800V AC/分钟

Temperature range:-40°C-+105°C

温度范围: -40°C-+105°C

Insulation resistance:1000MΩ min

绝缘电阻: 1000MΩ Min

Contact resistance:15mΩ Max

接触电阻: 15mΩ Max

X3501 HL - XX - N0 X

① ② ③ ④ ⑤ ⑥

1.Series No

2.Category:HL-Matching rubber shell row line lock

3.Row No.Pin No:XX-02~08P

4.Material:N0-Nylon66 UL94V-0

5.Color:BK-Black ; N-Natural

| Poles | Dimensions(mm) | |
|-------|----------------|-------|
| | A | B |
| 02 | 3.50 | 8.20 |
| 03 | 7.00 | 11.70 |
| 04 | 10.50 | 15.20 |
| 05 | 14.00 | 18.70 |
| 06 | 17.50 | 22.20 |
| 07 | 21.00 | 25.70 |
| 08 | 24.50 | 29.20 |

| | | | |
|-----------------|----------|----------|-----------------------------|
| X3501HL-XX-N0BK | Black | Nylon66 | X3501H-XXA / X3501H-XXB |
| X3501HL-XX-N0N | Natural | | X3501H-2xXXA / X3501H-2xXXB |
| PART NO | Material | Material | Suitable XKB Housing |

| | | | |
|------|--|-------------|--|
| DSND | | SCALE: N/A | MODEL TYPE: 3.5mm Crimp Style Connector |
| DWN | | VIEW: | PART NO.: X3501HL-XX-N0X |
| CHKD | | UNIT: mm/in | DWG NO.: X-X3501HL-XX-N0X |
| APPD | | SIZE: A4 | |



XKB INDUSTRIAL PRECISION CO.,LIMITED

广东星坤科技股份有限公司

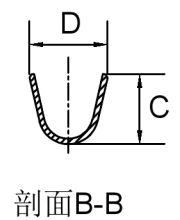
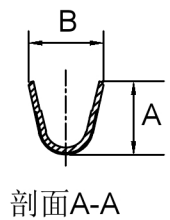
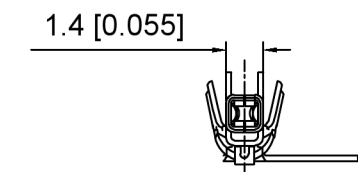
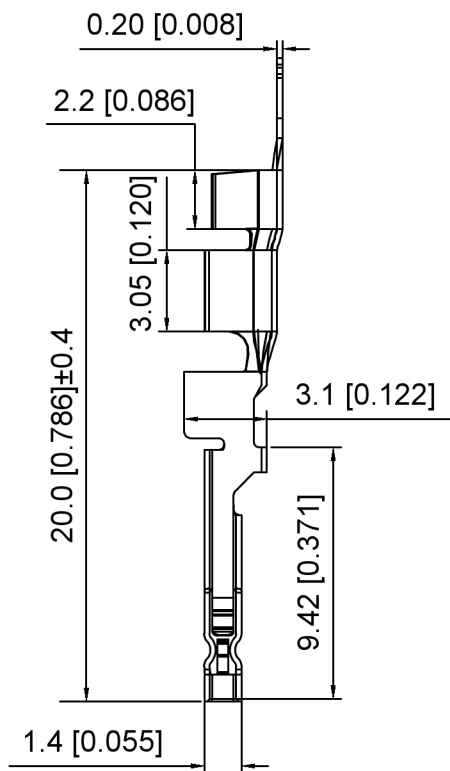
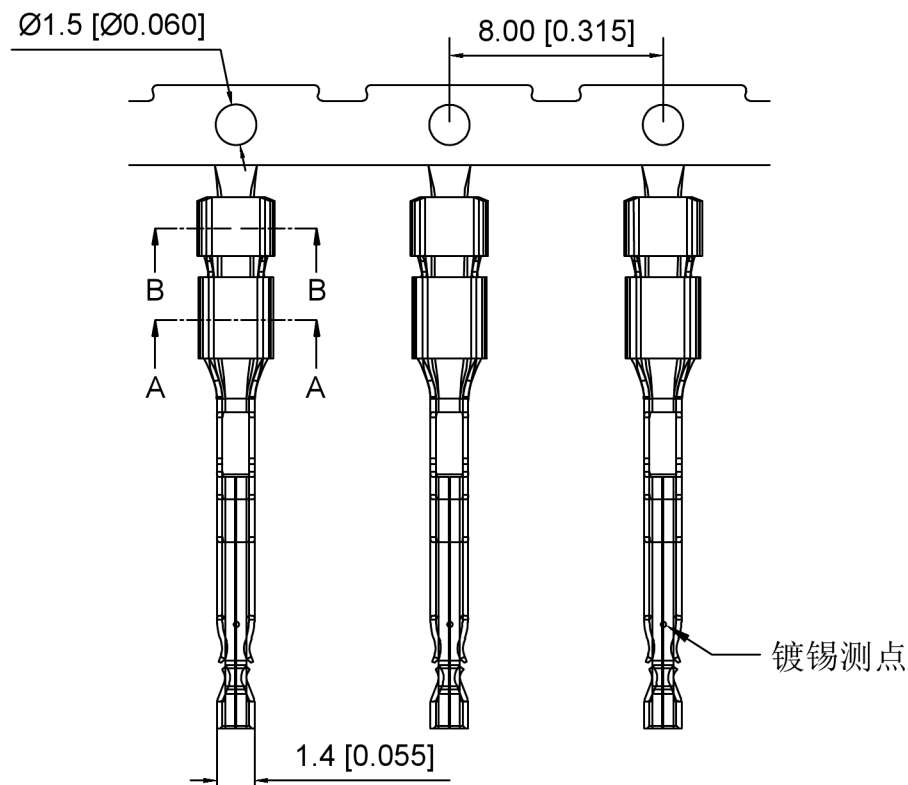
| MARK | DESCRIPTION | DATE | REVISED | APPROVED |
|------|-------------|------|---------|----------|
| ΔX | | | | |
| ΔX | | | | |
| ΔX | | | | |

文件工程章

| REVISIONS | UNSPECIFIED TOLERANCES |
|------------------|------------------------|
| ANGLAR ±5° | |
| L ≤ 4 ±0.2 | |
| 4 < L ≤ 16 ±0.3 | |
| 16 < L ≤ 63 ±0.4 | |
| L > 63 ±0.5 | |

www.helloxkb.com www.helloxkb.cn www.xk-dg.cn

| WEIGHT | SHEET | REVISION |
|--------|-------|----------|
| | 1/1 | A0 |



Specifications:
 规格:
 Voltage rating:400V AC/DC
 额定电压: 400V AC/DC
 Current rating:14A AC/DC
 额定电流: 14A AC/DC
 Withstanding voltage:1800V AC/minute
 耐受电压: 1800V AC/分钟
 Temperature range:-40°C-+105°C
 温度范围: -40°C-+105°C
 Insulation resistance:1000MΩ min
 绝缘电阻: 1000MΩ Min
 Contact resistance:10mΩ Max
 接触电阻: 10mΩ Max

X3501 T - TX SN - X
 ① ② ③ ④ ⑤

- 1.Series No
- 2.Category:T-Tterminal
- 3.Category:TP-Phosphor Bronze Ter
TH-High Conductive copper alloy Ter
- 4.Plating:Tin Plated 80-120u"Min
- 5.Type: TypeA ; TypeB

| | | | | | | |
|---------------|------------|-------|-------|-------|-------|----------------------|
| X3501T-TXSN-A | AWG#20-22 | 2.20 | 2.20 | 2.10 | 2.33 | X3501H |
| X3501T-TXSN-B | AWG#16-18 | 2.80 | 2.80 | 2.63 | 2.90 | Suitable XKB Housing |
| PART NO | Wire Range | DIM A | DIM B | DIM C | DIM D | |

广东星坤科技股份有限公司

| | | |
|------|-------------|------|
| ΔX | | 日期 |
| ΔX | | |
| ΔX | | |
| MARK | DESCRIPTION | DATE |

| | | | | | | |
|------------------------|--|--|--|--|-------------|------|
| | | | | | ANGLAR | ±5° |
| | | | | | L ≤ 4 | ±0.2 |
| | | | | | 4 < L ≤ 16 | ±0.3 |
| | | | | | 16 < L ≤ 63 | ±0.4 |
| | | | | | L > 63 | ±0.5 |
| UNSPECIFIED TOLERANCES | | | | | | |



| | | |
|------|--|-------------|
| DSND | | SCALE: N/A |
| DWN | | VIEW: |
| CHKD | | UNIT: mm/in |
| APPD | | SIZE: A4 |

| | | |
|--|-------|----------|
| MODEL TYPE: 3.5mm Crimp Style Connector | | |
| PART NO.: X3501T-TXSN-X | | |
| DWG NO.: X-X3501T-TXSN-X | | |
| WEIGHT | SHEET | REVISION |
| | 1/1 | A0 |

文件工程章