

Specifications:

规格:

Voltage rating: 50V AC/DC

额定电压: 50V AC/DC

Current rating: 0.8A AC/DC

额定电流: 0.8A AC/DC

Withstanding voltage: 250V AC/minute

耐受电压: 250V AC/分钟

Temperature

range: -25°C +85°C

温度范围: -25°C +85°C

X1004 W V S-2xXX-9TV01

① ② ③ ④ ⑤ ⑥

- ① Series No.
- ② Category: W-WAFER
- ③ Wedding Board Angle: V-Stringht 180°
- ④ Welding way : S-SMT
- ⑤ Row No. Pin No.: 2xXX Single Row;
- ⑥ Plug the Pin & Special No.: L-With Lock  
Material: 9T-PA9T 94V-0

PIN	DIM A	DIM B	DIM C	DIM D
2X10P	9.00	12.30	10.45	11.25
2X15P	14.00	17.30	15.45	16.25
2X20P	19.00	22.30	20.45	21.25
2X25P	24.00	27.30	25.45	26.25

Autodesk

Autodesk

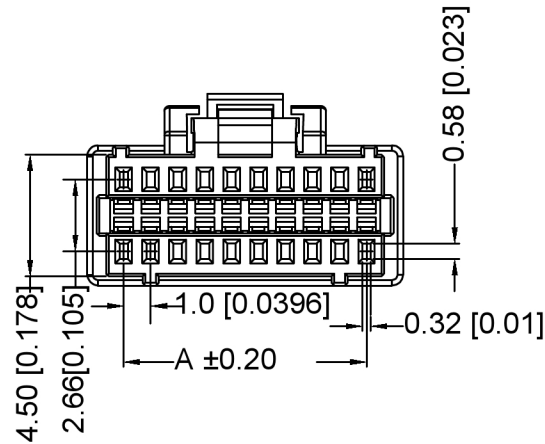
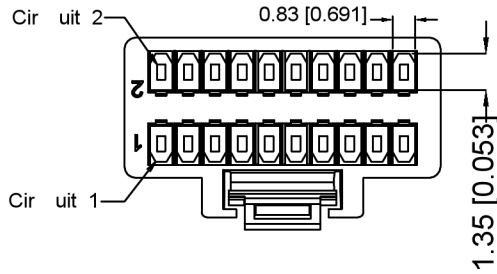
广东星坤科技股份有限公司

生效 MARK 日期 DESCRIPTION

文件工程章

REVISIONS	DATE	REVISED	APPROVED	UNSPECIFIED TOLERANCES	DSND	DATE	SCALE: N/A	MODEL TYPE:
				XKB ANGLAR ±5°	DWN	DATE	VIEW:	PART NO.:
				L ≤ 4 ±0.2	CHKD	DATE	UNIT: mm/in	2.54 mm Crimp Style Connectors
				4 < L ≤ 16 ±0.3	APPD	DATE	SIZE: A4	DWG NO.:
				16 < L ≤ 63 ±0.4	XKB INDUSTRIAL PRECISION CO., LIMITED			
				L > 63 ±0.5				WEIGHT
								SHEET
								REVISION
								1.0g
								1/1
								A0

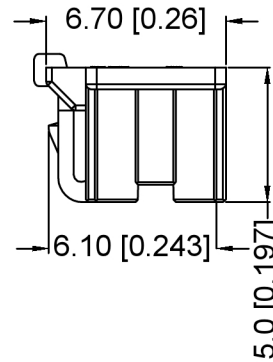
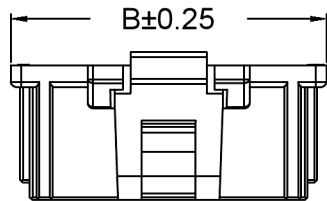
XKB



Specifications:  
 规格:  
 Voltage rating:50V AC/DC  
 额定电压: 50V AC/DC  
 Current rating:1A AC/DC  
 额定电流: 1A AC/DC  
 Withstanding voltage:250V AC/minute  
 耐受电压: 250V AC/分钟  
 Temperature range:-25 °C-+85°C  
 温度范围: -25°C-+85°C  
 Insulation resistance:≥100MΩ MIN  
 绝缘电阻: ≥100MΩ  
 Contact resistance:20mΩ MAX  
 接触电阻: ≤20mΩ  
 Applicable wire Range:AWG#28-#32  
 使用线范围: AWG #28-#32

**X1004 - H - 2xXX - N0**  
 ① ② ③ ④

- ① Series No.
- ② Category:H-HSG
- ③ Row No .-pln No. :2xXX-2\*08、2\*10、2\*15、2\*16、2\*20、2\*25
- ④ Material N0:PA66 UL94-0



PIN	DIM.(MM)	
	A	B
2X08	7.00	9.70
2X10	9.00	11.70
2X15	14.00	16.70
2X16	15.00	17.70
2X20	19.00	21.70
2X25	24.00	26.70

Autodesk

Autodesk

广东星坤科技股份有限公司

生效 日期

文件工程章

MARK	DESCRIPTION	DATE	REVISED	APPROVED	UNSPECIFIED TOLERANCES	XKB	ANGLAR	±5°	DSND	DATE	SCALE: N/A	MODEL TYPE:		
							L ≤ 4	±0.2	DWN	DATE	VIEW:	PART NO.:		
							4 < L ≤ 16	±0.3	CHKD	DATE	UNIT: mm/in	2.54 mm Crimp Style Connectors		
							16 < L ≤ 63	±0.4	APPD	DATE	SIZE: A4	DWG NO.:		
							L > 63	±0.5				<b>X1004H-2xXX-N0</b>		
XKB INDUSTRIAL PRECISION CO.,LIMITED												WEIGHT	SHEET	REVISION
												1.0g	1/1	A0