

Preliminary Specification

Dipole Antenna

- RFDPA151300SBLB8G1 for Single Band 2.4/5.x GHz Application

ELECTRICAL CHARACTERISTICS

Item	Specification
Working Frequency Range	2.4 / 5.X GHz (Note-1)
Gain	3 dBi ; 5dBi
Return Loss	-10dB(Max)
VSWR	2 max.
Polarization	Linear
Radiation Pattern	Omni-directional
Impedance	50Ω

*Note 1. Central Frequency should be defined after customers' application approval.

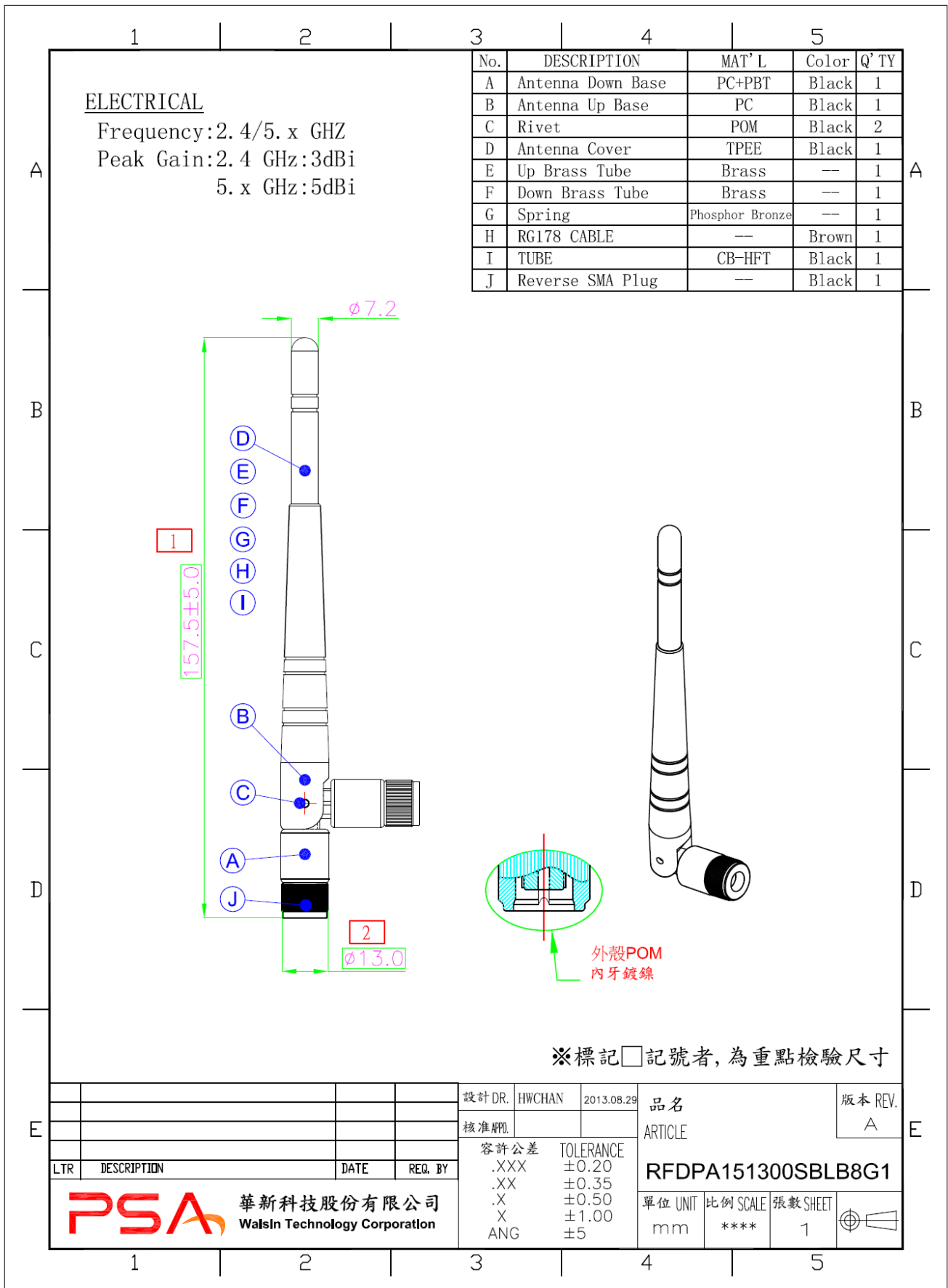
MATERIAL TABLE

Items	Description
Cable	RG178(Brown)
Antenna Cover	TPEE
Antenna Base	PC/PBT
Connector	Reverse SMA Plug
Color	Black
Brass Tube	Brass
Spring	Phosphor Bronze
Tube	CB-HFT

ORDERING RULE

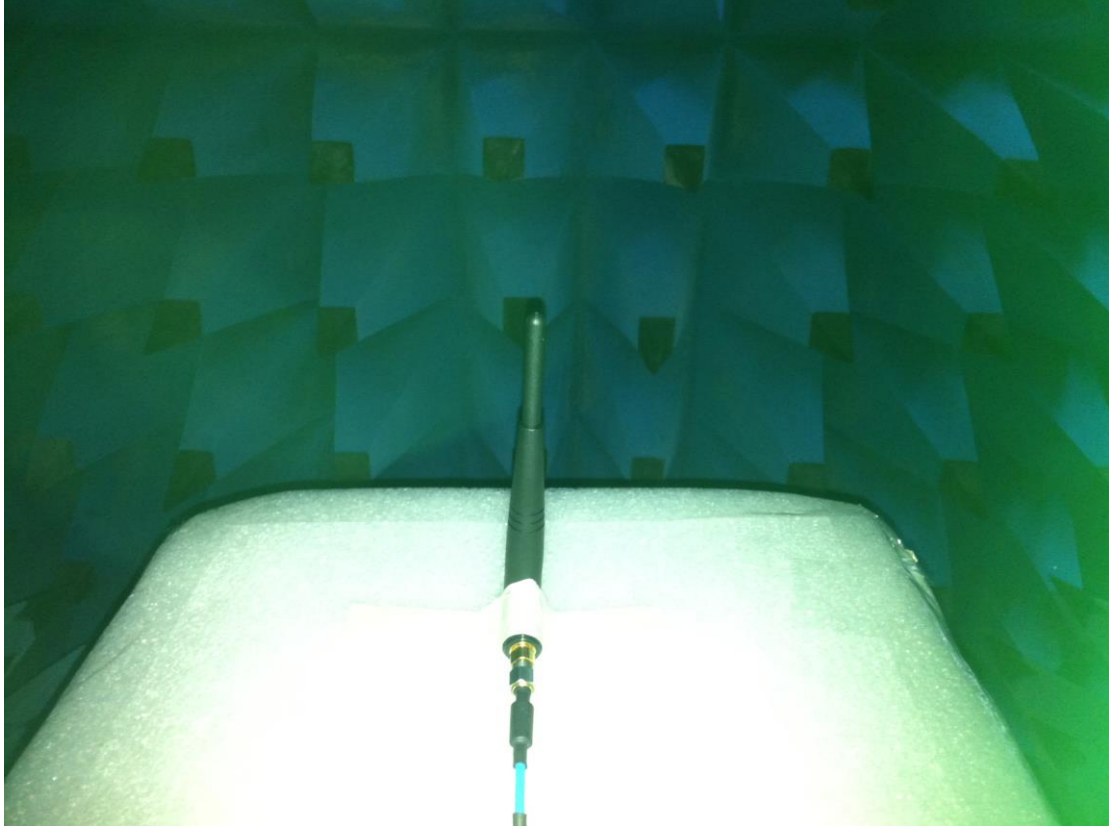
RF	DPA	1513	00	S	B	L	B	8	G1
Type Code	Product Code	Dipole Dimension (Unit: mm)	Cable Length (unit: cm)	Connector Brand	Type of Connector	Application	Project status	Wire Diameter	Project
Walsin RF Device	DPA: Dipole Antenna	Per 2 digits of length, width e.g.: 1513 Length 157.5mm, Width 13mm	2 digits for cable length e.g.: 00 None Cable	A: N C:MCX D:IPEX III E: IPEX IV F: IPEX A13 H: Hirose I: IPEX M: MMCX S: SMA T: TNC U:MURATA N: None	A: Reverse Female B: Reverse Male F: Female M: Male N: None	0: 0GHz 3: 3GHz 5: 5 GHz 6: 6GHz A: 2.4GHz ISM band B: GSM 900/1800 dual band G: GPS band L: 2.4/5.2/5.8 GHz tri-band N: NFC T:LTE band W: WCDMA band	B: MP T:During Test X: Pile Run	0:None 1:∅0.81 3:∅1.13 6:RG316 7:∅1.37 8:RG178	01~99 series number

DIMENSIONS

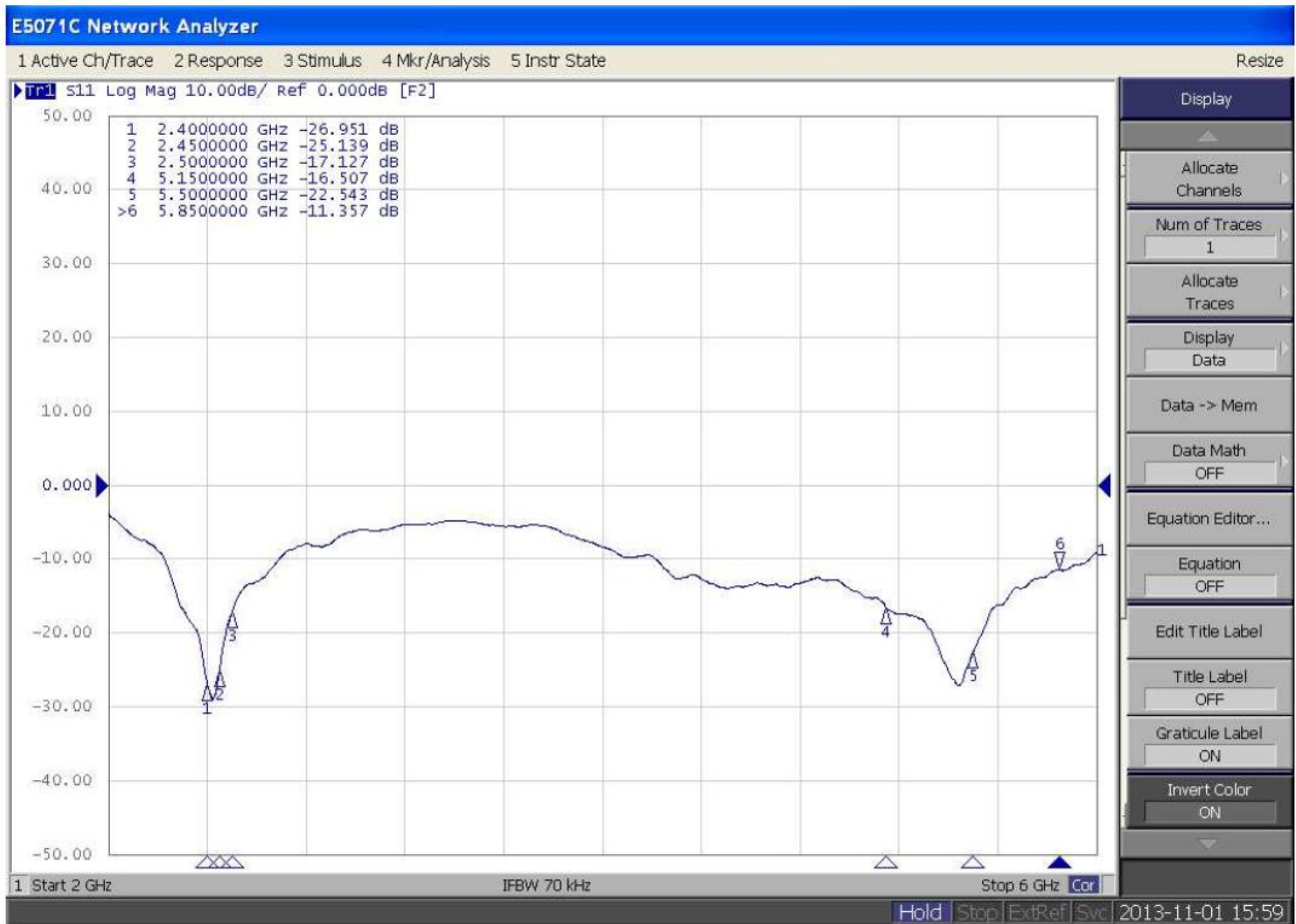


Test Report

■ Experimental Setup



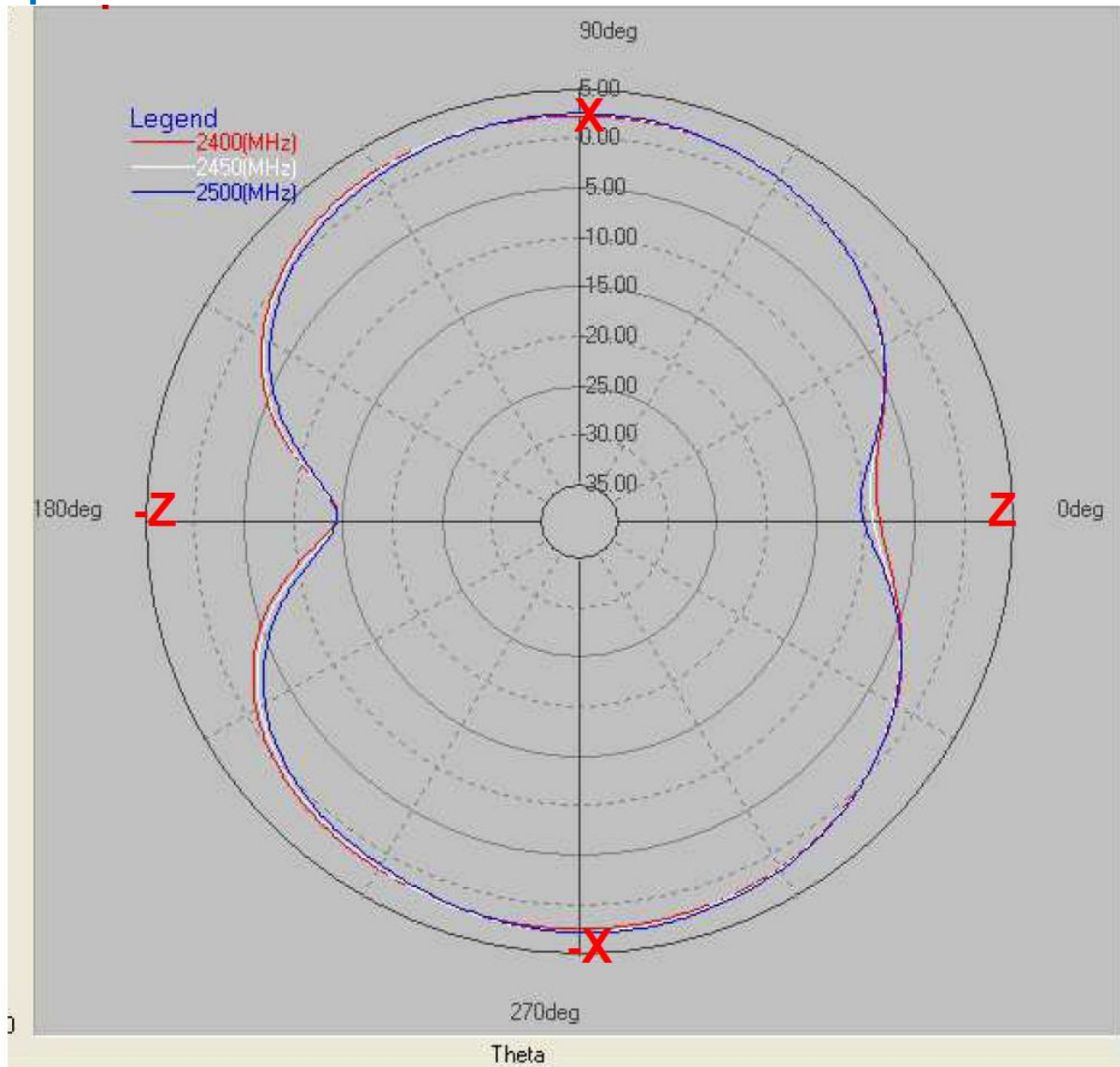
Return Loss



Radiation Patterns

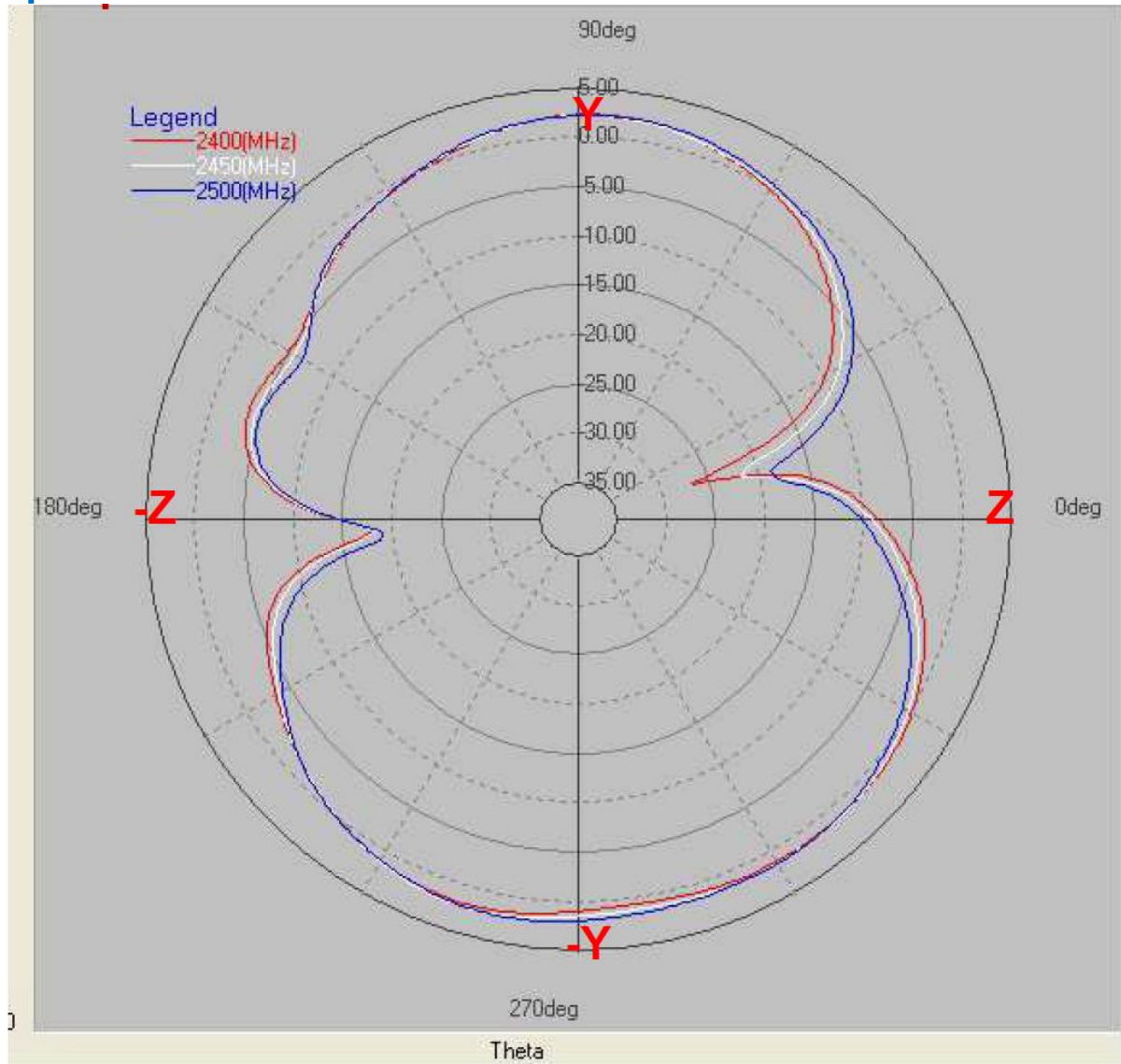
Ant-2G

ZX plane



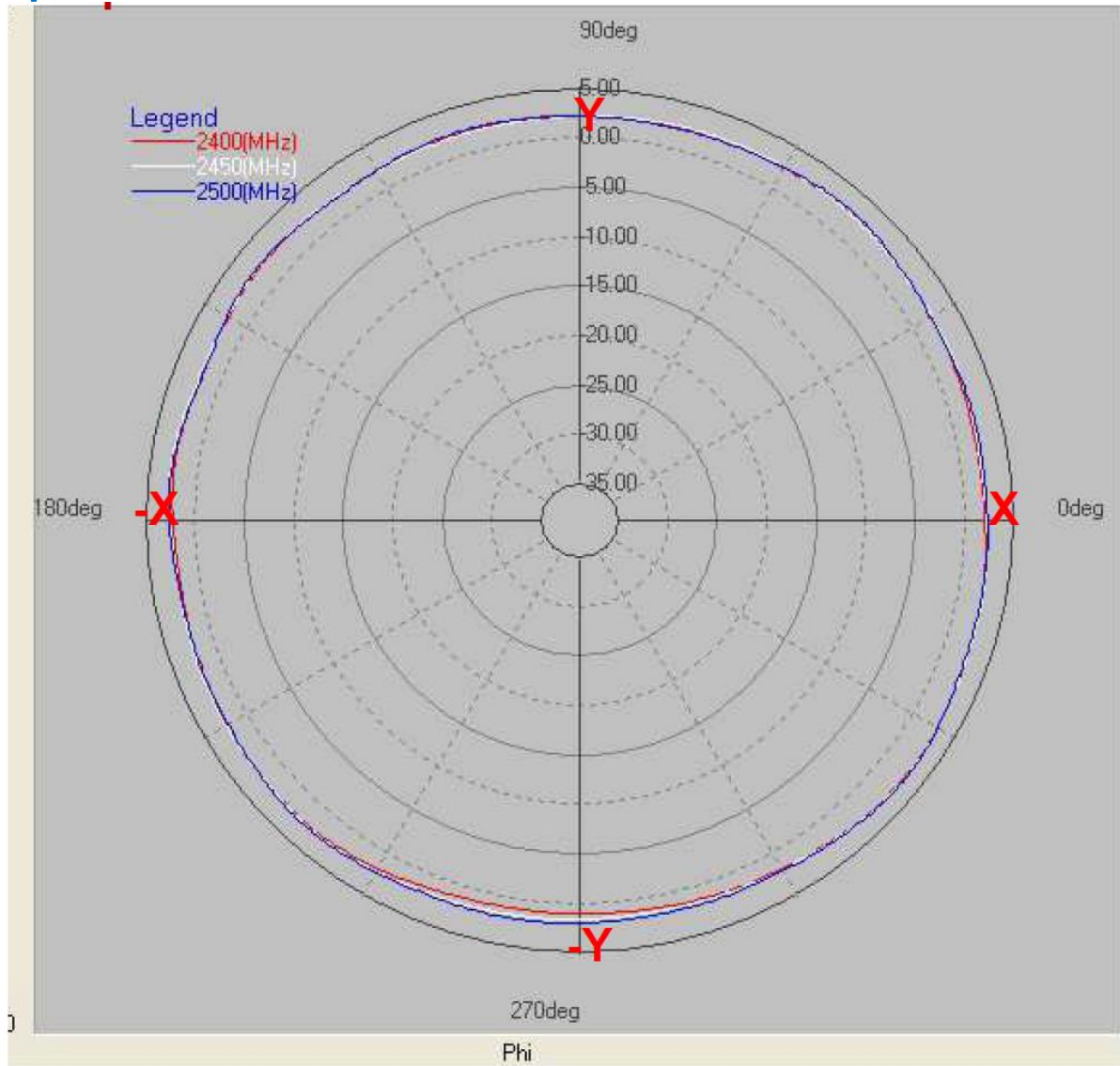
Layer	Max value	Min value	Average
2400(MHz)	2.29	-14.39	-0.06
2450(MHz)	2.58	-14.39	-0.08
2500(MHz)	2.73	-14.33	-0.19

ZY plane



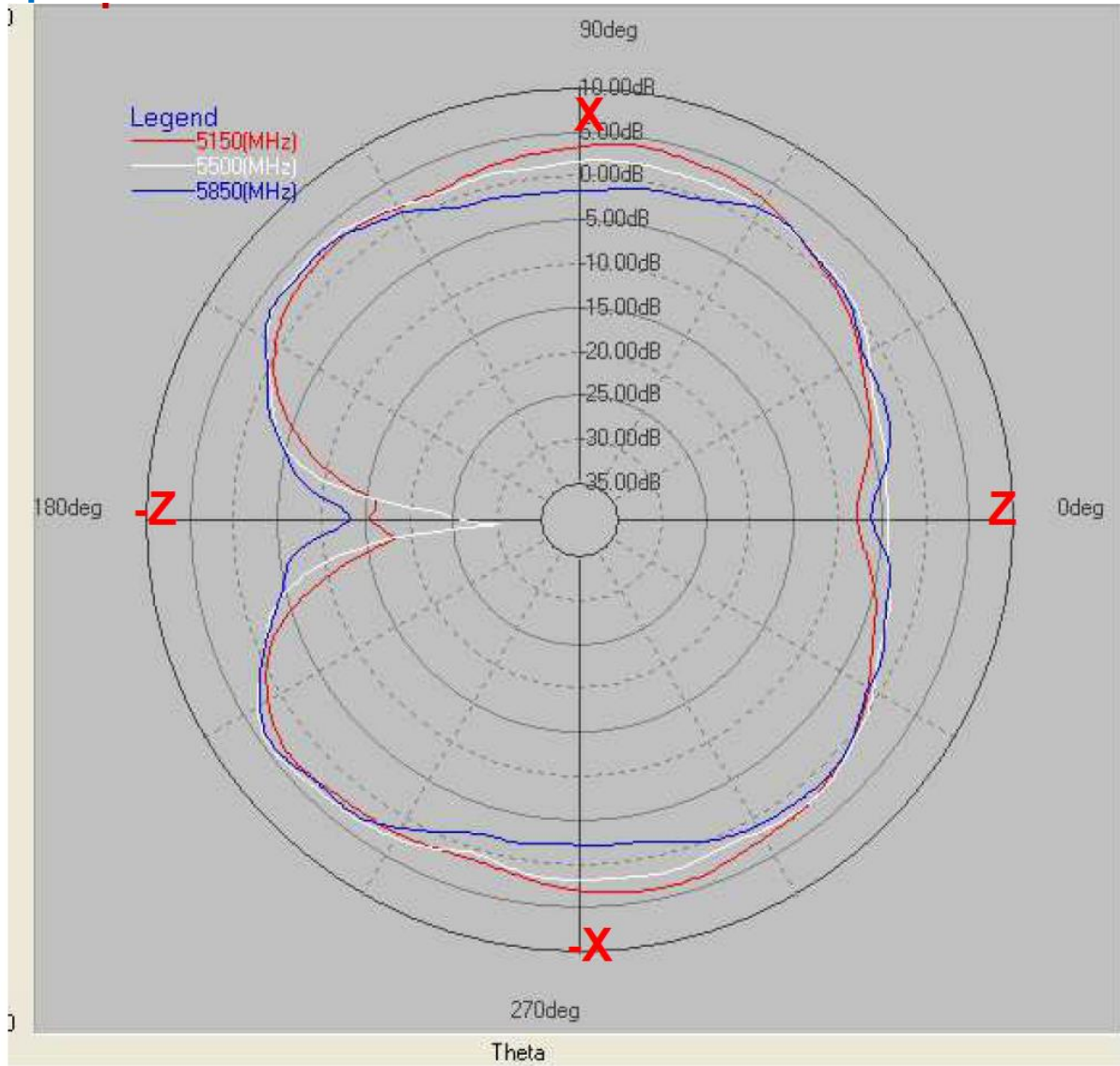
Layer	Max value	Min value	Average
2400(MHz)	2.20	-27.55	-1.05
2450(MHz)	2.09	-21.76	-0.97
2500(MHz)	2.11	-19.03	-0.94

XY plane



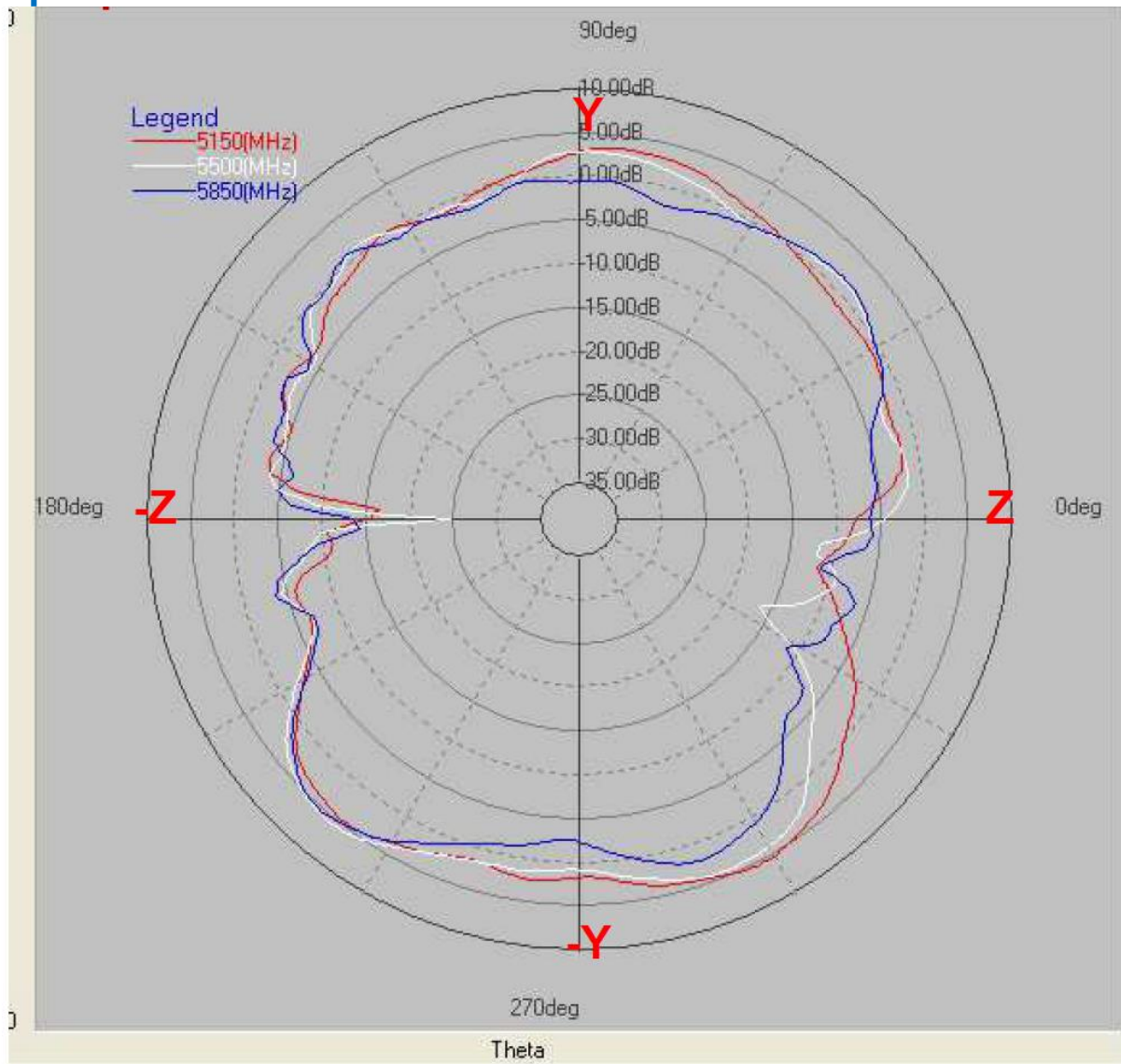
Layer	Max value	Min value	Average
2400(MHz)	3.03	0.89	2.13
2450(MHz)	3.11	1.41	2.26
2500(MHz)	3.18	1.76	2.30

Ant-5G ZX plane



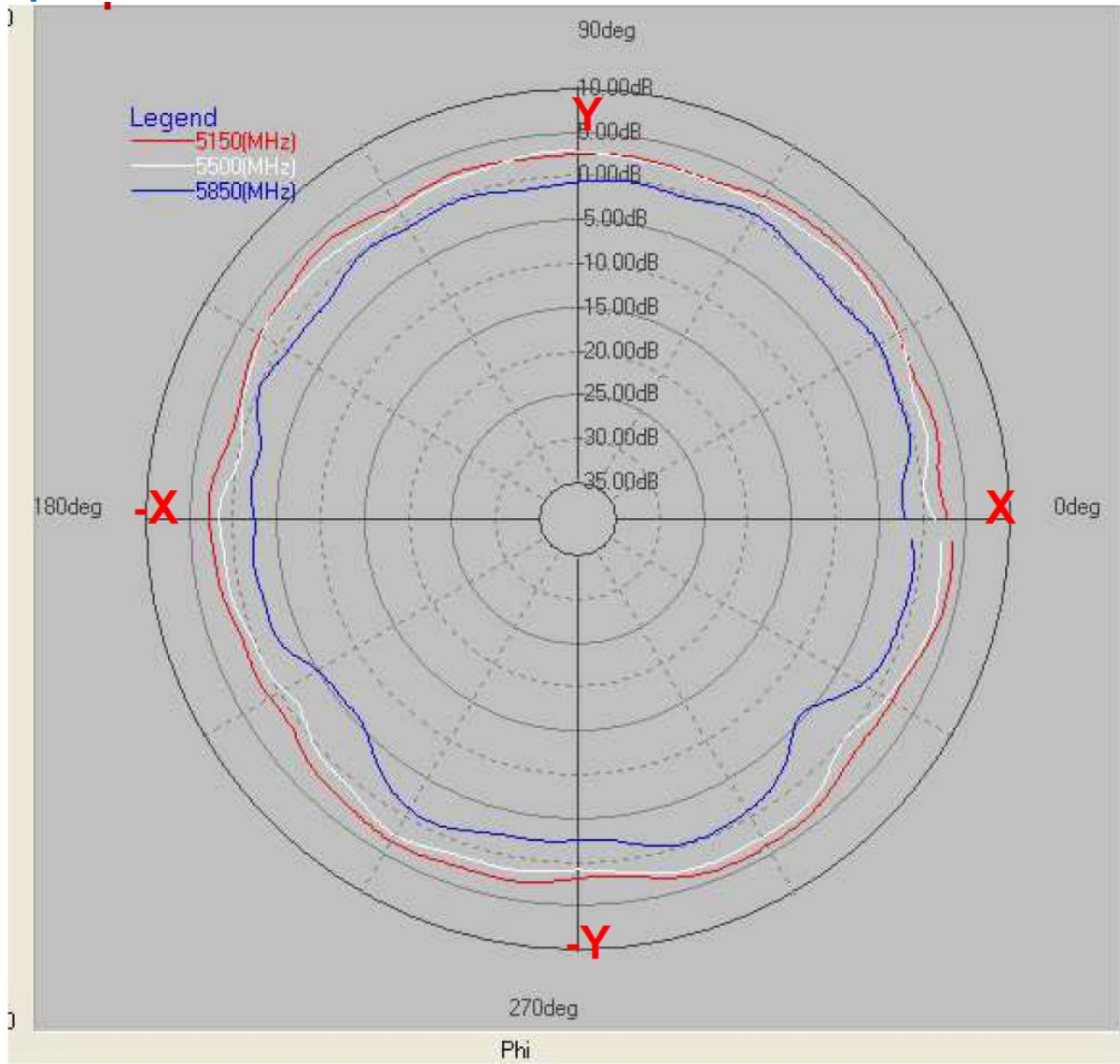
Layer	Max value	Min value	Average
5150(MHz)	3.73 dB	-18.38 dB	0.26 dB
5500(MHz)	4.32 dB	-30.78 dB	0.31 dB
5850(MHz)	3.98 dB	-13.58 dB	-0.62 dB

ZY plane



Layer	Max value	Min value	Average
5150(MHz)	5.17 dB	-16.65 dB	-0.22 dB
5500(MHz)	5.44 dB	-24.82 dB	-0.49 dB
5850(MHz)	5.12 dB	-14.41 dB	-1.62 dB

XY plane



Layer	Max value	Min value	Average
5150(MHz)	3.80 dB	0.90 dB	2.57 dB
5500(MHz)	3.13 dB	-1.07 dB	1.70 dB
5850(MHz)	0.82 dB	-5.67 dB	-1.43 dB

Package

PSA 蘇州華科電子有限公司

制品規格書

版別：1.0.0

客戶		品名	RFDPA151300SAXB8G1	發行編號		頁次	1/1
產品包裝圖示：							
圖示一							
單PCS產品		PE袋		10pcs產品包裝			
圖示二							
珍珠棉		外箱		珍珠棉放進外箱中			
圖示三							
產品包裝說明： 1.將每10PCS產品裝入1PE袋中(如圖示一) 2.將珍珠棉放入外箱中(如圖示二) 3.將裝好的成品(如圖示三)放入外箱中，每箱放600pcs產品，上下各放1片珍珠棉。 4. 包裝材料規格 4.1 PE袋規格: 長250*寬100*厚度0.05mm 4.2 珍珠棉規格:長330*寬330*高8mm 4.3 外箱規格: 長350*寬350*高190mm 5.產品標籤需貼到最小包裝							

FORM NO :