


AAP Gen 7 (TO-240AA) Power Modules Schottky Rectifier, 200 A



AAP Gen 7 (TO-240AA)

FEATURES

- 175 °C T_J operation
- Low forward voltage drop
- High frequency operation
- UL approved file E78996 
- Low thermal resistance
- Designed and qualified for industrial level
- Material categorization: for definitions of compliance please see www.vishay.com/doc?99912



RoHS
COMPLIANT

BENEFITS

- Excellent thermal performances obtained by the usage of exposed direct bonded copper substrate
- High surge capability
- Easy mounting on heatsink

ELECTRICAL DESCRIPTION / APPLICATIONS

The VS-VSKDS409/150 Schottky rectifier doubler module has been optimized for low reverse leakage at high temperature. The proprietary barrier technology allows for reliable operation up to 175 °C junction temperature.

Typical applications are in high current switching power supplies, plating power supplies, UPS systems, converters, freewheeling diodes, welding, and reverse battery protection.

| PRIMARY CHARACTERISTICS | |
|-------------------------|----------------------------|
| $I_{F(AV)}$ | 200 A |
| V_R | 150 V |
| Package | AAP Gen 7 (TO-240AA) |
| Circuit configuration | Two diodes doubler circuit |

MECHANICAL DESCRIPTION

The AAP Gen 7, new generation of ADD-A-PAK module, combines the excellent thermal performances obtained by the usage of exposed direct bonded copper substrate, with advanced compact simple package solution and simplified internal structure with minimized number of interfaces.

| MAJOR RATINGS AND CHARACTERISTICS | | | |
|-----------------------------------|--|-------------|-------|
| SYMBOL | CHARACTERISTICS | VALUES | UNITS |
| $I_{F(AV)}$ | Rectangular waveform | 200 | A |
| V_{RRM} | | 150 | V |
| I_{FSM} | $t_p = 5 \mu s$ sine | 20 000 | A |
| V_F | 200 A _{pk} , $T_J = 125 \text{ }^\circ\text{C}$ | 0.85 | V |
| T_J | Range | -55 to +175 | °C |

| VOLTAGE RATINGS | | | |
|-------------------------------------|-----------|-----------------|-------|
| PARAMETER | SYMBOL | VS-VSKDS409/150 | UNITS |
| Maximum DC reverse voltage | V_R | 150 | V |
| Maximum static peak reverse voltage | V_{RRM} | | |



| ABSOLUTE MAXIMUM RATINGS | | | | | |
|---|-------------|---|---|--------|-------|
| PARAMETER | SYMBOL | TEST CONDITIONS | | VALUES | UNITS |
| Maximum average forward current | $I_{F(AV)}$ | 50 % duty cycle at $T_C = 105\text{ }^\circ\text{C}$, rectangular waveform | | 200 | A |
| Maximum peak one cycle non-repetitive surge current | I_{FSM} | 5 μs sine or 3 μs rect. pulse | Following any rated load condition and with rated V_{RRM} applied | 20 000 | |
| | | 10 ms sine or 6 ms rect. pulse | | 2300 | |
| Non-repetitive avalanche energy | E_{AS} | $T_J = 25\text{ }^\circ\text{C}$, $I_{AS} = 1.8\text{ A}$, $L = 10\text{ mH}$ | | 15 | mJ |
| Repetitive avalanche current | I_{AR} | Current decaying linearly to zero in 1 μs Frequency limited by T_J maximum $V_A = 1.5 \times V_R$ typical | | 1 | A |
| Maximum dynamic peak reverse voltage | V_{AV} | $T_J = 25\text{ }^\circ\text{C}$, $I_{AS} = 1.8\text{ A}$, $L = 10\text{ mH}$ | | 170 | V |

| ELECTRICAL SPECIFICATIONS | | | | | |
|---------------------------------|-----------|--|-----------------------------------|--------------|------------------|
| PARAMETER | SYMBOL | TEST CONDITIONS | | VALUES | UNITS |
| Maximum forward voltage drop | V_{FM} | 200 A | $T_J = 25\text{ }^\circ\text{C}$ | 1.03 | V |
| | | 400 A | | 1.33 | |
| | | 200 A | $T_J = 125\text{ }^\circ\text{C}$ | 0.85 | |
| | | 400 A | | 1.13 | |
| Maximum reverse leakage current | I_{RM} | $T_J = 25\text{ }^\circ\text{C}$ | $V_R = \text{Rated } V_R$ | 6 | mA |
| | | $T_J = 125\text{ }^\circ\text{C}$ | | 85 | |
| Maximum junction capacitance | C_T | $V_R = 5\text{ V}_{DC}$ (test signal range 100 kHz to 1 MHz), $25\text{ }^\circ\text{C}$ | | 6000 | pF |
| Typical series inductance | L_S | Measured lead to lead 5 mm from package body | | 5.0 | nH |
| Maximum voltage rate of change | dV/dt | Rated V_R | | 10 000 | V/ μs |
| Maximum RMS insulation voltage | V_{INS} | 50 Hz | | 3000 (1 min) | V |
| | | | | 3600 (1 s) | |

| THERMAL - MECHANICAL SPECIFICATIONS | | | | | |
|---|----------------|--|--|---------------------|---------------------------|
| PARAMETER | SYMBOL | TEST CONDITIONS | | VALUES | UNITS |
| Maximum junction and storage temperature range | T_J, T_{Stg} | | | -55 to +175 | $^\circ\text{C}$ |
| Maximum thermal resistance, junction to case per leg | R_{thJC} | DC operation | | 0.32 | $^\circ\text{C}/\text{W}$ |
| Typical thermal resistance, case to heatsink per module | R_{thCS} | | | 0.1 | |
| Approximate weight | | | | 75 | g |
| | | | | 2.7 | oz. |
| Mounting torque $\pm 10\%$ | to heatsink | A mounting compound is recommended and the torque should be rechecked after a period of 3 h to allow for the spread of the compound. | | 4 | Nm |
| | busbar | | | 3 | |
| Case style | | JEDEC [®] | | TO-240AA compatible | |

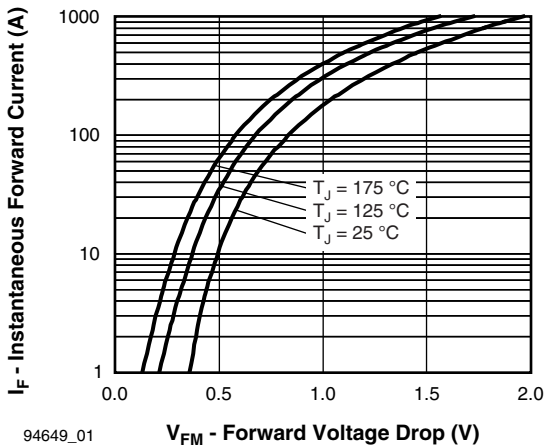


Fig. 1 - Maximum Forward Voltage Drop Characteristics (Per Leg)

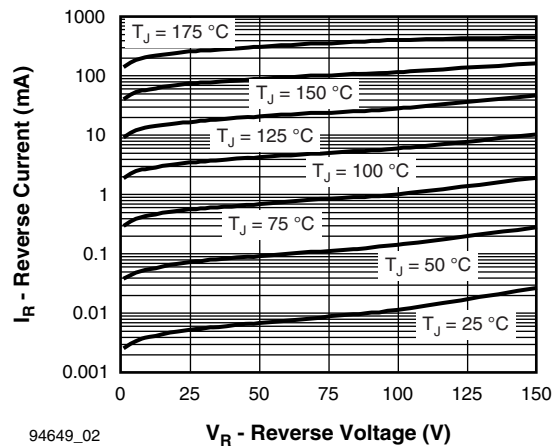


Fig. 2 - Typical Values of Reverse Current vs. Reverse Voltage

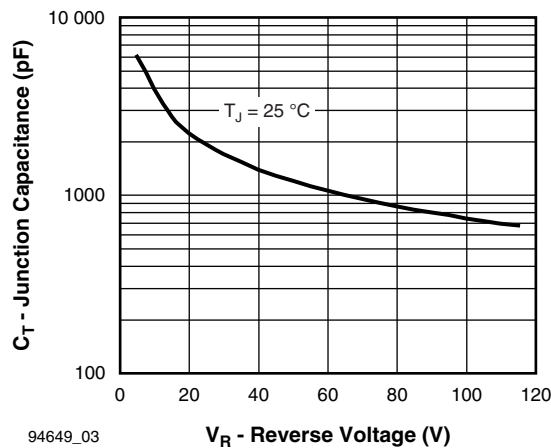


Fig. 3 - Typical Junction Capacitance vs. Reverse Voltage

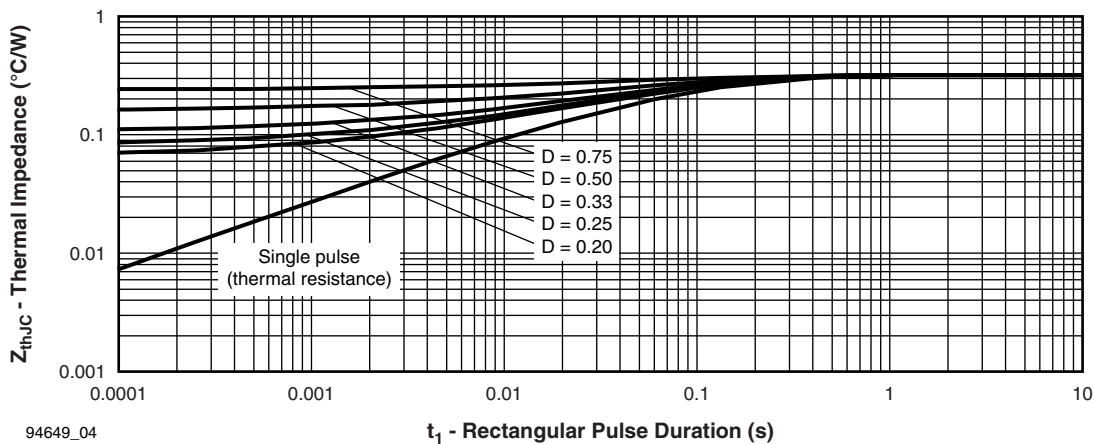
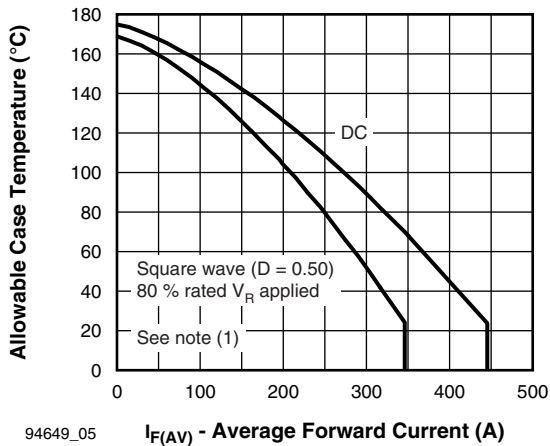


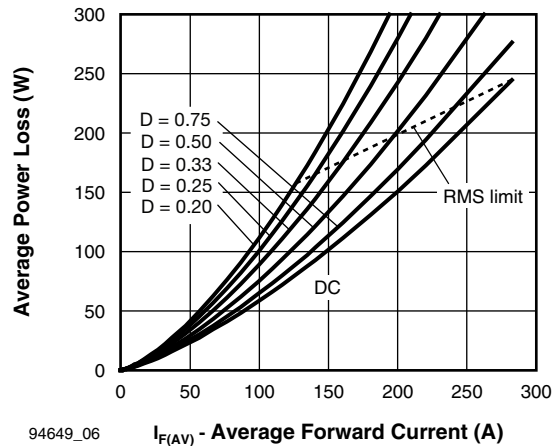
Fig. 4 - Maximum Thermal Impedance Z_{thJC} Characteristics (Per Diode)



94649_05

$I_{F(AV)}$ - Average Forward Current (A)

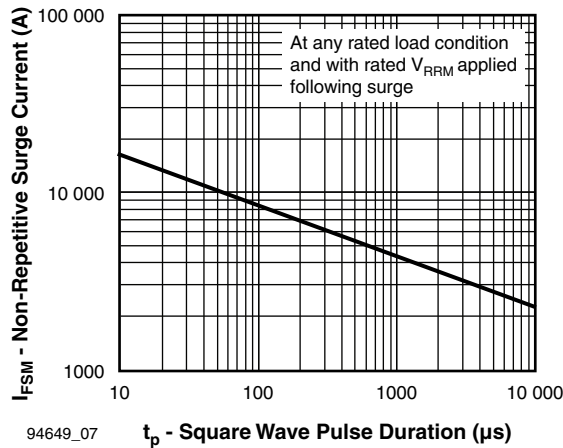
Fig. 5 - Maximum Allowable Case Temperature vs. Average Forward Current (Per Leg)



94649_06

$I_{F(AV)}$ - Average Forward Current (A)

Fig. 6 - Forward Power Loss Characteristics (Per Leg)



94649_07

t_p - Square Wave Pulse Duration (μ s)

Fig. 7 - Maximum Non-Repetitive Surge Current

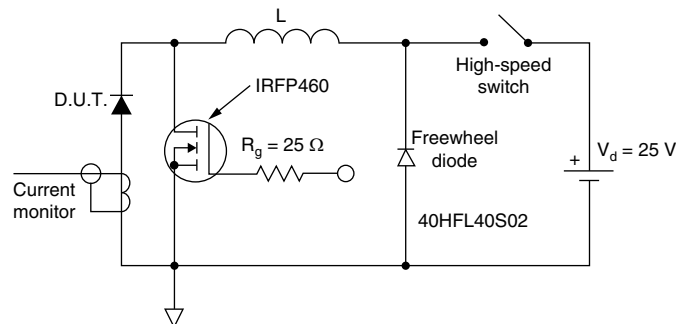


Fig. 8 - Unclamped Inductive Test Circuit

Note

- (1) Formula used: $T_C = T_J - (P_d + P_{dREV}) \times R_{thJC}$;
 P_d = forward power loss = $I_{F(AV)} \times V_{FM}$ at $(I_{F(AV)}/D)$ (see fig. 6);
 P_{dREV} = inverse power loss = $V_{R1} \times I_R (1 - D)$; I_R at $V_{R1} = 80\%$ rated V_R

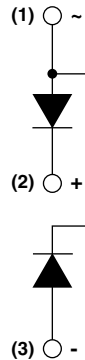
ORDERING INFORMATION TABLE

| | | | | | | | |
|-------------|--------------|-----------|----------|-----------|----------|----------|------------|
| Device code | VS-VS | KD | S | 40 | 9 | / | 150 |
| | ① | ② | ③ | ④ | ⑤ | | ⑥ |

- 1** - Vishay Semiconductors product
- 2** - Circuit configuration:
KD = ADD-A-PAK - 2 diodes doubler circuit
- 3** - S = Schottky diode
- 4** - Average current rating (40 = 400 A) ⁽¹⁾
- 5** - Product silicon identification
- 6** - Voltage rating (150 = 150 V)

Note

⁽¹⁾ For KD configuration average current rating per module is 200 A

CIRCUIT CONFIGURATION

LINKS TO RELATED DOCUMENTS

| | |
|------------|--|
| Dimensions | www.vishay.com/doc?95369 |
|------------|--|

ADD-A-PAK Generation VII - Diode

DIMENSIONS in millimeters (inches)





Disclaimer

ALL PRODUCT, PRODUCT SPECIFICATIONS AND DATA ARE SUBJECT TO CHANGE WITHOUT NOTICE TO IMPROVE RELIABILITY, FUNCTION OR DESIGN OR OTHERWISE.

Vishay Intertechnology, Inc., its affiliates, agents, and employees, and all persons acting on its or their behalf (collectively, "Vishay"), disclaim any and all liability for any errors, inaccuracies or incompleteness contained in any datasheet or in any other disclosure relating to any product.

Vishay makes no warranty, representation or guarantee regarding the suitability of the products for any particular purpose or the continuing production of any product. To the maximum extent permitted by applicable law, Vishay disclaims (i) any and all liability arising out of the application or use of any product, (ii) any and all liability, including without limitation special, consequential or incidental damages, and (iii) any and all implied warranties, including warranties of fitness for particular purpose, non-infringement and merchantability.

Statements regarding the suitability of products for certain types of applications are based on Vishay's knowledge of typical requirements that are often placed on Vishay products in generic applications. Such statements are not binding statements about the suitability of products for a particular application. It is the customer's responsibility to validate that a particular product with the properties described in the product specification is suitable for use in a particular application. Parameters provided in datasheets and / or specifications may vary in different applications and performance may vary over time. All operating parameters, including typical parameters, must be validated for each customer application by the customer's technical experts. Product specifications do not expand or otherwise modify Vishay's terms and conditions of purchase, including but not limited to the warranty expressed therein.

Except as expressly indicated in writing, Vishay products are not designed for use in medical, life-saving, or life-sustaining applications or for any other application in which the failure of the Vishay product could result in personal injury or death. Customers using or selling Vishay products not expressly indicated for use in such applications do so at their own risk. Please contact authorized Vishay personnel to obtain written terms and conditions regarding products designed for such applications.

No license, express or implied, by estoppel or otherwise, to any intellectual property rights is granted by this document or by any conduct of Vishay. Product names and markings noted herein may be trademarks of their respective owners.