



# CT Meter

For AC Current Measurement When Using Current Transformers

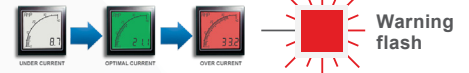
Easy to Use. Easy to Read.

High resolution 5A Input  
for use with current transformers

**0.5%**  
Accuracy

**40**  
Segment curved  
bar graph display

Programmable backlight  
color to alert user



Programmable 4 digit  
star-burst display. Custom  
messages & annunciators

**2**

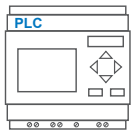
Alarm set points

Programmable  
scale

Combined digital and  
bar graph display

USB 2.0

USB port for custom user settings  
via the free easy-to-use software



2 outputs - digital  
and analogue

**16** Position switch for  
selecting standard  
configurations

Less than  
53mm deep

**WIDE**  
viewing angle

Available in either  
**POSITIVE**  
**NEGATIVE**



Full 4 digit readout for accuracy

Featuring an acclaimed easy-to-read display, combined with easy-to-use programming software and a high resolution input, the CT Meter is the newest addition to the Advanced Panel Meter (APM) product group to measure current.

The CT Meter is designed specifically for use with current transformers. When used with an external current transformer, it can accurately measure up to 10,000 amps. The CT Meter also provides a range of features, such as alarm set-points and three-color dynamic backlighting.

The customizable four-character message display and scalability enable users to tailor the meter to display critical parameters to their desired specifications. The set-points, coupled with the backlighting allows operators to be visually alerted when a parameter is out of range. The two outputs can be used to connect the APM to other systems in the process.

## Key Features

### Large multi-format display that incorporates:

- 40 segment bar graph display
- Large 4-digit display
- Separate Starburst display area for annunciators, custom messages and alarm information
- Dynamic backlight color

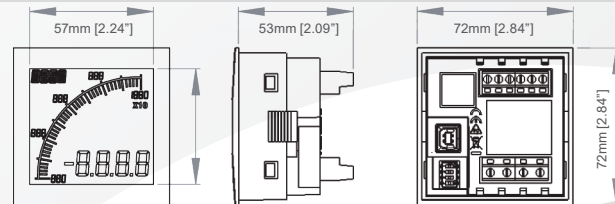
### Programmable:

- Display Range (Both Min & Max Values)
- Custom annunciators
- User-selectable backlight color and intensity
- Two independent alarm set-points
- Two independent outputs
- 4-20mA analog monitor output

### Visibility:

- User-adjustable backlight brightness and colour
- Large display
- Wide viewing angle (horizontal and vertical)
- Custom annunciators

### Dimensions:



Panel cutout: 68mm x 68mm [2.68" x 2.68"] as per DIN43700/IEC61554

### INPUT

Range (CT Output Current)  
 Range (via External CT)  
 Accuracy

### CURRENT

0 - 5A  
 0 - 10,000A  
 0.5%

### ENVIRONMENTAL

Temperature - operating  
 Temperature - storage  
 IP rating (from the front)  
 NEMA rating (from the front)

-10 to +60°C  
 -40 to +70°C  
 IP65  
 Type 4 & Type 12

### POWER SUPPLY

Nominal Input

12-24VAC or DC

### DISPLAY

Number of digits  
 Digit height  
 Number of message characters  
 Backlight colours  
 LCD display

4  
 12mm [0.47"]  
 4  
 Red, Green, White  
 Positive or Negative

### OUTPUTS

Max voltage  
 Max current  
 Analogue output

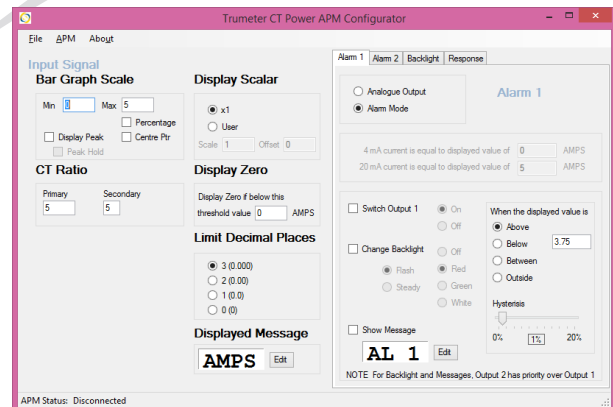
34V  
 500mA  
 4-20mA

### CERTIFICATION

UL, cUL, CE

## Easy To Use Software

Just plug into any USB port on your PC, run the freely available APM Configurator application and you're off. No drivers required.



### Part Numbers:

<a href="#">APM-CT-APN</a>	APM CT Meter, Positive LCD
<a href="#">APM-CT-APO</a>	APM CT Meter, Positive LCD, With Outputs
<a href="#">APM-CT-ANN</a>	APM CT Meter, Negative LCD
<a href="#">APM-CT-ANO</a>	APM CT Meter, Negative LCD, With Outputs
<a href="#">022128-01</a>	USB Cable

### BY REQUEST

<a href="#">APM-CT-APS</a>	APM CT Meter, Positive LCD with Modbus
<a href="#">APM-CT-ANS</a>	APM CT Meter, Negative LCD with Modbus

Full specifications available online [www.trumeter.com/apm](http://www.trumeter.com/apm)

