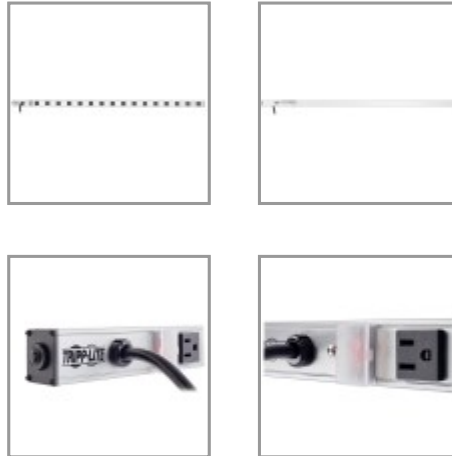


## 16-Outlet Vertical Power Strip, 15-ft. Cord, 5-15P, 48 in.

MODEL NUMBER: **PS4816**



### Highlights

- 16 outlets
- Convenient and safe covered, on/off switch
- 15-amp circuit breaker
- 15-ft. cord
- 48" length

### Package Includes

- PS4816
- Mounting hardware
- Instruction manual

### Description

Tripp Lite's PS4816 power strip offers 15 amp, 120V multi-outlet AC power distribution in a convenient 48 inch mountable housing. Ideal for horizontal or vertical raceway style power distribution in office, workbench, industrial, networking and telecom applications. Includes 16 NEMA 5-15R output receptacles with 2.717 inch center-to-center spacing, 15 ft AC line cord and lighted power switch with locking transparent cover to prevent accidental shutoff. Sturdy all-metal extruded aluminum housing stands up to demanding network, laboratory or factory environments.

INPUT/OUTPUT: Input: NEMA 5-15P/Output: 16 NEMA 5-15R

ELECTRICAL: 120V AC, 50/60Hz, 15A

FORMAT: 48 in. corded, mountable power strip

### Features

- Sturdy all-metal 48 inch corded strip format with 2.717 inch center-to-center outlet spacing
- Includes 16 NEMA 5-15R output receptacles
- Ideal for horizontal or vertical raceway style power distribution in office, workbench, industrial, networking and telecom applications
- Lighted power switch with locking transparent cover prevents accidental shutoff
- 15 amp electrical capacity with circuit breaker
- 120VAC, 50/60Hz electrical compatibility

## Specifications

OVERVIEW	
UPC Code	037332011466



<b>INPUT</b>	
Nominal Input Voltage(s) Supported	120V AC
Recommended Electrical Service	15A 120V
Input Cord Gauge Type	14 gauge; SJT
Voltage Compatibility (VAC)	120
Input Plug Type	NEMA 5-15P
Input Cord Length (ft.)	15
Input Cord Length (m)	4.57
Integrated Cord Clip	No
<b>OUTPUT</b>	
Frequency Compatibility	50 / 60 Hz
Output (Watts)	1800
Output Receptacles	(16) 5-15R
Circuit Breaker (amps)	15
Transformer Accommodation	(8) Yes
Outlet Spacing	2.717 in.
Right-Angle Outlets	No
<b>USER INTERFACE, ALERTS &amp; CONTROLS</b>	
Switches	Lighted 2 position switch controls power to all outlets
Locking Switch Cover	Transparent on/off switch cover prevents accidental turn-off
<b>PHYSICAL</b>	
Anti-Microbial Protective Coating	No
Color	Silver
Color (AC Line Cord)	Black
Form Factors Supported	Supports horizontal or vertical raceway style power distribution in office, workbench, industrial, networking and telecom applications
Included Mounting Accessories	Includes mounting clips
Integrated Keyhole Mounting Slots	No
Material of Construction	Aluminum
Outlets Measurement (Center to Center)	69mm
Receptacle Color	Black
Shipping Dimensions (hwd / cm)	6.10 x 8.64 x 130.05
Shipping Dimensions (hwd / in.)	2.40 x 3.40 x 51.20



**Tripp Lite**  
1111 W. 35th Street  
Chicago, IL 60609 USA  
Telephone: 773.869.1234  
[www.tripplite.com](http://www.tripplite.com)

Shipping Weight (kg)	1.93
Shipping Weight (lbs.)	4.25
Unit Dimensions (hwd / cm)	122 x 3.8 x 3.8
Unit Dimensions (hwd / in.)	48 x 1.5 x 1.5
Unit Weight (kg)	1.95
Unit Weight (lbs.)	4.3
<b>STANDARDS &amp; COMPLIANCE</b>	
Canada	cUL
UL1363 (Power Tap)	UL1363
<b>WARRANTY</b>	
Product Warranty Period (Worldwide)	Lifetime limited warranty

© 2020 Tripp Lite. All rights reserved. All product and company names are trademarks or registered trademarks of their respective holders. Use of them does not imply any affiliation with or endorsement by them. Tripp Lite has a policy of continuous improvement. Specifications are subject to change without notice. Tripp Lite uses primary and third-party agencies to test its products for compliance with standards. See a list of Tripp Lite's testing agencies: <https://www.tripplite.com/products/product-certification-agencies>