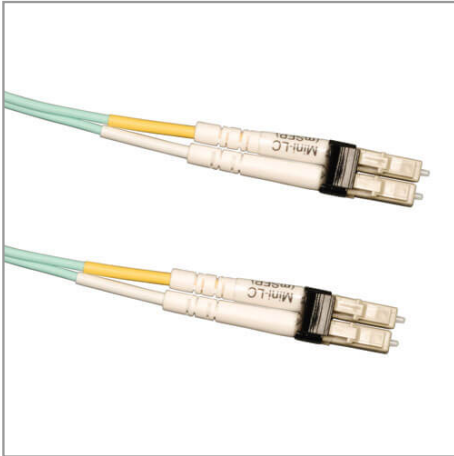


OM3 can support 40GBASE-SR4 / 100GBASE-SR10 in applicable parallel optics networks

## 10Gb Duplex Multimode 50/125 OM3 LSZH Fiber Patch Cable (Mini-LC / Mini-LC) - Aqua, 1M (3 ft.)

MODEL NUMBER: **N838-01M**



### Description

Tripp Lite introduces its new, Mini-LC to Mini-LC, OM3 Laser-Optimized Multimode Fiber (LOMMF) "Aqua" cables, for use with 10Gb Ethernet applications, utilizing mini SFP transceivers, such as Brocade FC8-64 High Density 64-port Fibre Channel Blade. These new technology, 50/125um, mini-LC/ mini-LC Fiber Optic cables, provide nearly four times the bandwidth over conventional 62.5um multimode fiber, with performance rivaling that of Singlemode cable, at a much reduced cost. LOMMF cable allows 10Gb serial transmission over extended distances in the 850nm wavelength window, where low-cost Vertical Cavity Surface Emitting Lasers (VCSELs) enable a cost-effective, high-bandwidth solution. LOMMF is ideally suited for LAN's, SAN's, and high-speed parallel interconnects for head-ends, central offices, and data centers.

### Features

- Mini-LC to Mini-LC Fiber Patch Cable, 1 Meter
- Designed for 10-Gig Ethernet applications...OM3 Rated
- For use with networking hardware employing mini-LC SFP transceivers
- Max 10Gb distance of 300 meters @850nm
- Low-Smoke, Zero Halogen (LSZH) Aqua jacket
- Use with Brocade FC8-64 and other Mini-LC SFP devices

## Specifications

OVERVIEW	
UPC Code	037332165794

### Highlights

- Mini-LC to Mini-LC Fiber Patch Cable, 1 Meter
- Designed for 10-Gig Ethernet applications...OM3 Rated
- For use with networking hardware employing mini-LC SFP transceivers
- Max 10Gb distance of 300 meters @850nm
- Low-Smoke, Zero Halogen (LSZH) Aqua jacket

### Package Includes

- 1M (3-ft.) 10Gb Duplex MMF 50/125 OM3 LSZH Fiber Optic Patch Cable ( Mini-LC to Mini-LC ) - Aqua



Clad Diameter	125 micron
Core Diameter	50 micron
Number of Fibers	2
Optical Mode	OM3
<b>INPUT</b>	
Cable Length (ft.)	3.3
Cable Length (m)	1
Cable Length (in.)	39.4
<b>PHYSICAL</b>	
Color	Aqua
Shipping Dimensions (hwd / cm)	22.86 x 17.78 x 1.27
Shipping Dimensions (hwd / in.)	9.00 x 7.00 x 0.50
Shipping Weight (kg)	0.01
Shipping Weight (lbs.)	0.03
<b>COMMUNICATIONS</b>	
Network Speed	10Gbps / 40Gbps / 100Gbps
<b>CONNECTIONS</b>	
Side A - Connector 1	MINI LC DUPLEX (MALE)
Side B - Connector 1	MINI LC DUPLEX (MALE)
<b>FEATURES &amp; SPECIFICATIONS</b>	
Technology	Multimode
<b>SPECIAL FEATURES</b>	
Push/Pull Tabs	No
<b>WARRANTY</b>	
Product Warranty Period (Worldwide)	Lifetime limited warranty

© 2020 Tripp Lite. All rights reserved. All product and company names are trademarks or registered trademarks of their respective holders. Use of them does not imply any affiliation with or endorsement by them. Tripp Lite has a policy of continuous improvement. Specifications are subject to change without notice. Tripp Lite uses primary and third-party agencies to test its products for compliance with standards. See a list of Tripp Lite's testing agencies: <https://www.triplite.com/products/product-certification-agencies>