

AN-2125 LMZ23605/03, LMZ22005/03 Demonstration Board

1 Introduction

The LMZ23605/03, LMZ22005/03 demonstration boards are designed to be an easy-to-use platform to evaluate the basic capabilities of this family of SIMPLE SWITCHER® power modules. The PCB has excellent thermal performance and implements the most common applications for the product.

The LMZ23605/03 can accept an input voltage rail between 6V and 36V and the LMZ22005/03 can accept an input voltage rail between 6V and 20V. The devices can deliver an adjustable and highly accurate output voltage as low as 0.8V and as high as 6V. The internal control architecture is constant frequency PWM with emulated current mode sensing. The control loop operates well with low ESR output capacitors such as ceramics or specialty polymer. The precision enable input allows for programmable UVLO on the input supply. The external soft-start capacitor facilitates controlled output rise time at startup. The LMZ23605/03 and LMZ22005/03 family is a reliable and robust solution with loss-less cycle-by-cycle valley current limit to protect for over current or short-circuit faults. Additionally there is thermal shutdown protection, and they will start up into a pre-biased output. Free-running switching frequency is 812 kHz and a 650 kHz to 950 kHz synchronization range is supported.

2 Board Specifications

- V_{IN} = 6V to 36V (LMZ22005/03 limited to 20V)
- Enable UVLO = 5.7V
- V_{OUT} = 3.3V
- I_{OUT} = 0 to 5A (3A)
- θ_{JA} = 12°C / W, θ_{JC} = 1.9°C/W
- Max ambient temp of 70°C for 12Vin and 3.3Vout @ 5A
- Designed on four layers; Inner are 2 oz; Outer are 3 oz.
- Measures 3.5 in. × 3.5 in. (8.9 cm × 8.9 cm) and is 62mil (.062") thick of FR4 laminate material

For additional circuit considerations, refer to the Applications Section of the LMZ23605/03 and LMZ22005/03 data sheets. For negative output voltage connections, see *AN-2027 Inverting Application for the LMZ14203 SIMPLE SWITCHER Power Module Application Report* ([SNVA425](#)).

3 Simplified Schematic

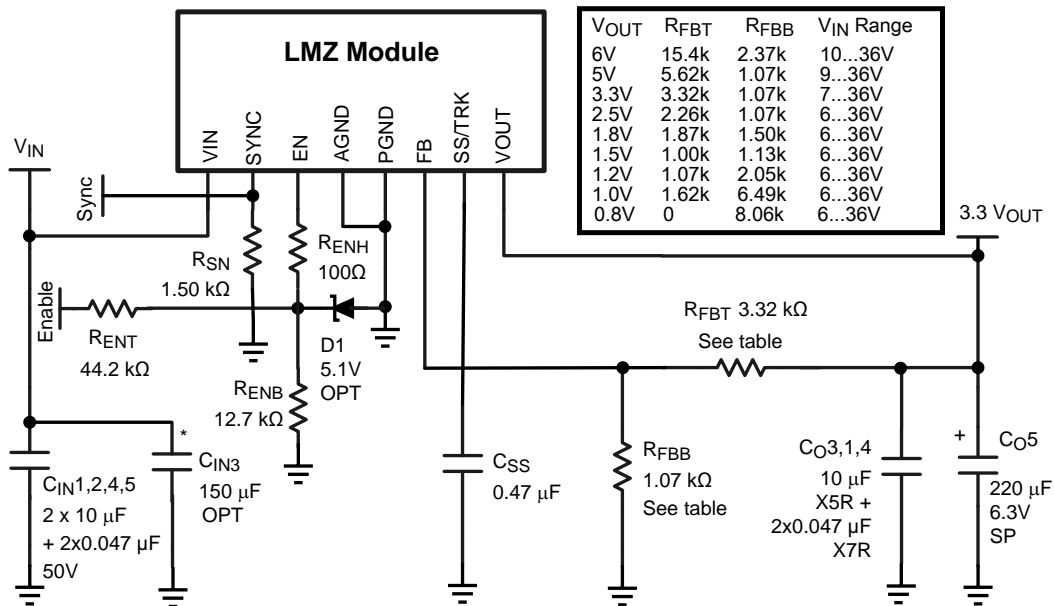
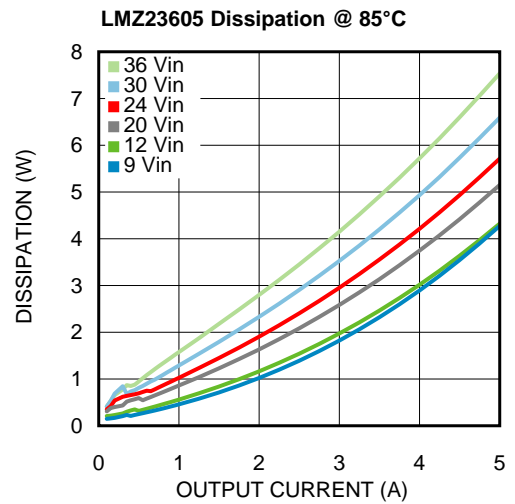
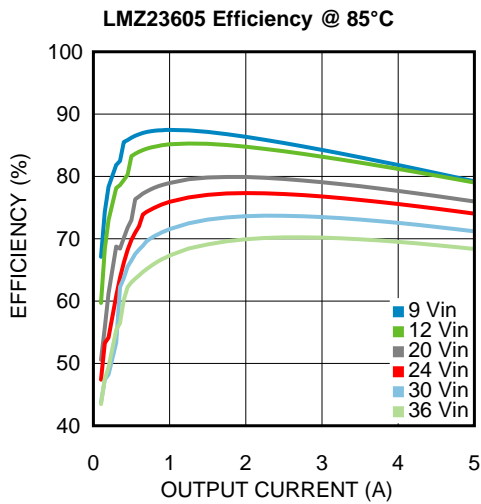
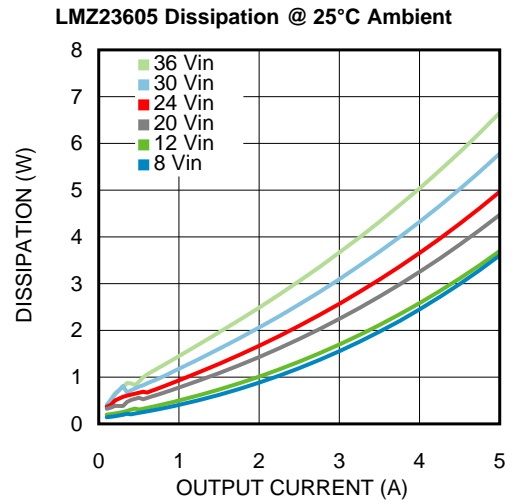
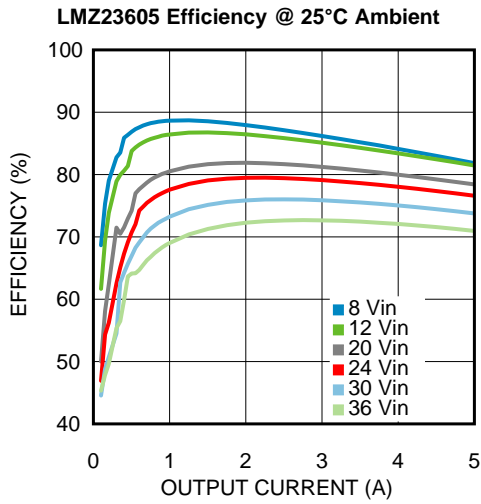
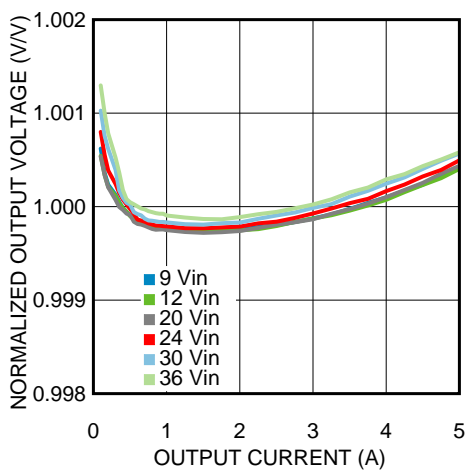


Figure 1. Demonstration Board Simplified Schematic

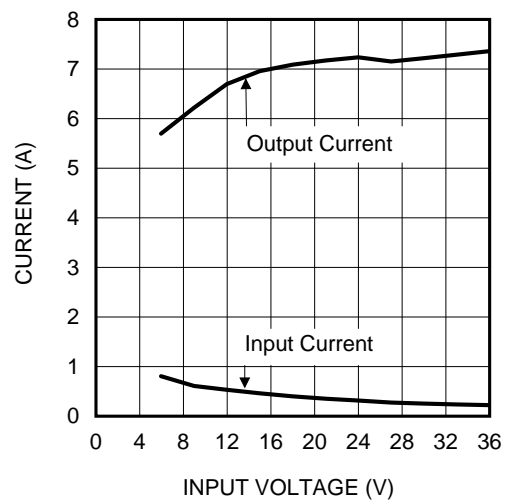
4 Performance Characteristics

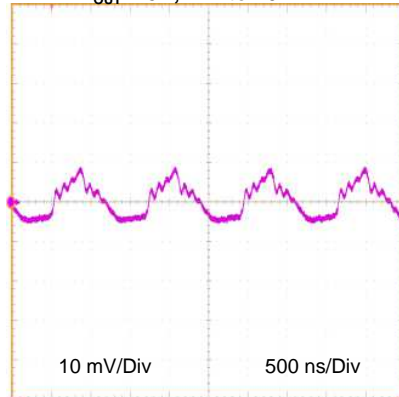
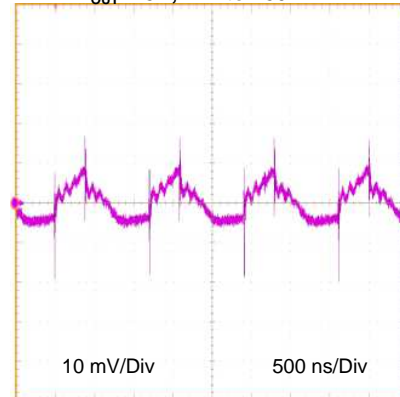
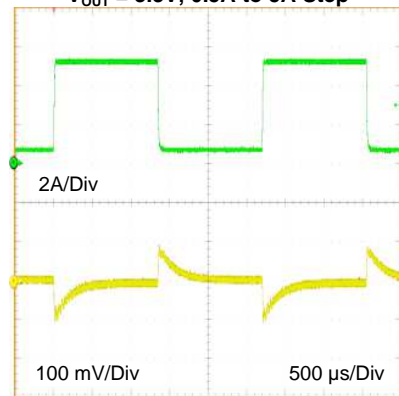
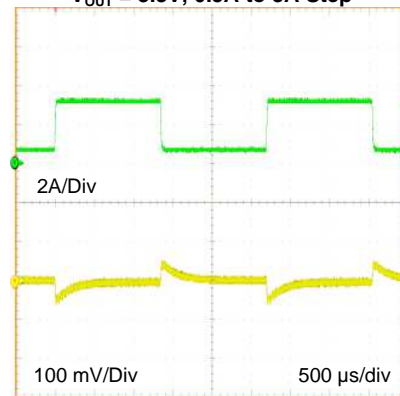
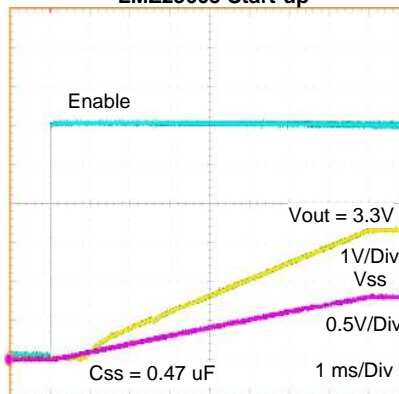
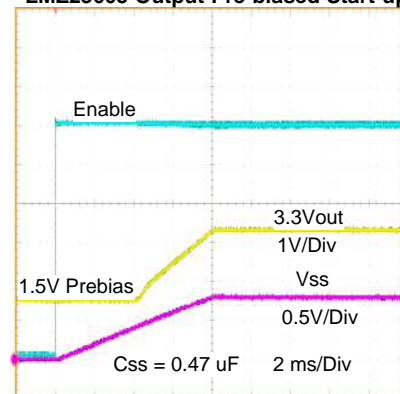


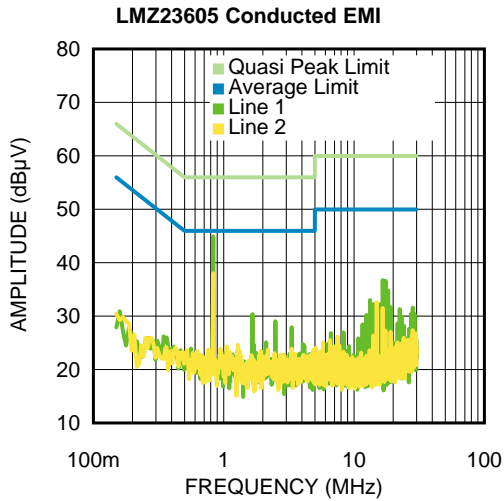
LMZ23605 Load and Line Regulation @ 25°C Ambient



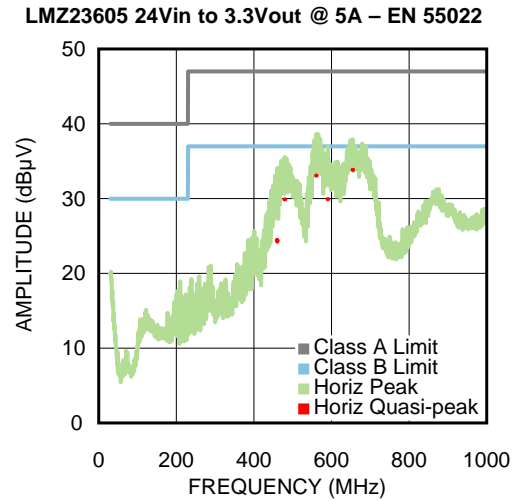
LMZ23605 Current Limit $V_{OUT} = 3.3V$



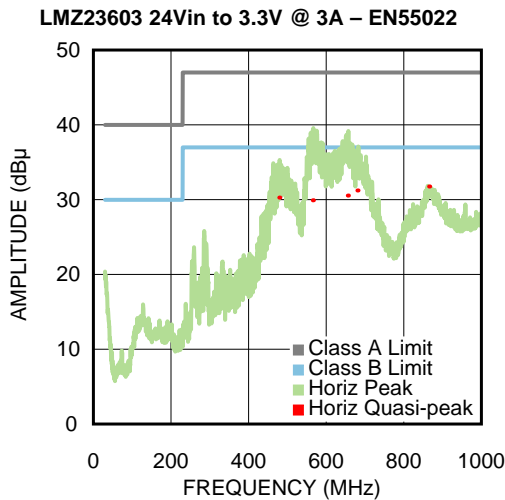
**LMZ23605 Output Ripple $V_{OUT} = 3.3V$
 $I_{OUT} = 5A$, BW to 20 MHz**

 $C_{out} = 220 \mu F$ Poscap + $10 \mu F$ X5R + $2 \times 0.047 \mu F$
**Output Ripple $V_{OUT} = 3.3V$
 $I_{OUT} = 5A$, BW to 250 MHz**

 $C_{out} = 220 \mu F$ Poscap + $10 \mu F$ X5R + $2 \times 0.047 \mu F$
**LMZ23605 Load Step Response $V_{IN} = 12V$
 $V_{OUT} = 3.3V$, 0.5A to 5A Step**

**LMZ23603 Load Step Response $V_{IN} = 12V$
 $V_{OUT} = 3.3V$, 0.5A to 3A Step**

LMZ23605 Start-up

LMZ23605 Output Pre-biased Start-up




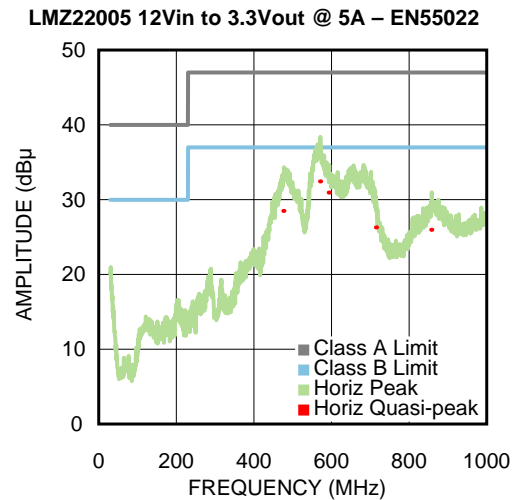
2.2 μH / 10 μF input LC filter
and 10μF in || w/ C_{IN1}



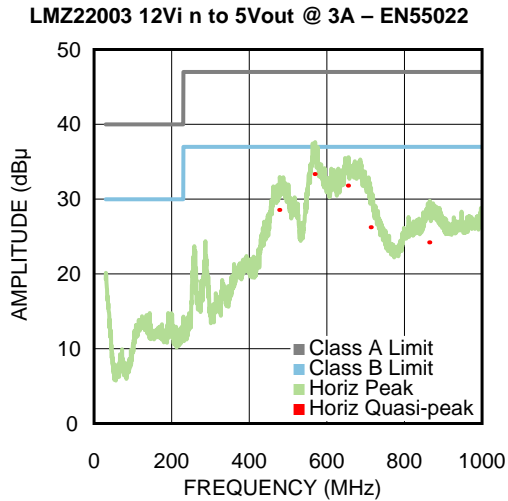
C_{in} = default +10 μF +3 × 0.01μF
C_o = default + 2 × 0.01μF



C_{in} = default +10 μF +3 × 0.01μF
C_o = default + 2 × 0.01μF



C_{in} = default +10 μF +3 × 0.01μF
C_o = default + 2 × 0.01μF



$C_{in} = \text{default} + 10 \mu\text{F} + 3 \times 0.01 \mu\text{F}$
 $C_o = \text{default} + 2 \times 0.01 \mu\text{F}$

5 Notes

Solder turrets are located on the edge of the PCB assembly for demonstration hookup to bench test equipment. The Enable input turret is designed for direct connection to the V_{IN} turret. There is a resistive divider implemented on the board that establishes the precision 5.7V UVLO level of the board. A common user change to this divider is to raise the value of R_{ENT} to increase the operating UVLO to that of the target application. Refer to the respective data sheet for calculation. Note that if in the end application the module pin 3 enable input voltage does not exceed 5.5V at maximum V_{in} then enable clamp zener D1 can be omitted.

Each implementation of the demonstration board is preset to 3.3V output; with current rating and maximum input voltage dictated by the model of module installed. A common user change is to adjust the output voltage for different requirements. A table of suggested resistor pairs are listed in figure 1 for quick reference.

A turret is provided for applying a clock to synchronize the module switching frequency anywhere between 650 kHz and 950 kHz. Note that a sustained “logic one” on this input corresponds to “zero hertz” and will cause the module to stop switching.

Inductor current can be observed by cutting the bottom side conducting etch connecting module pin 7 V_{OUT} and the C_o array. Install a 5” loop of 22 ga insulated wire in the two vias. Monitor the inductor sense loop with an AC/DC oscilloscope current probe.

The top side V_{in} plane has solder mask openings where an input LC network can be placed to accommodate improved differential mode and conducted EMI performance.

Additional component mounting pads are available to experiment with alternative C_{in} and C_{out} combinations. See figure 6 for corresponding schematic locations.

6 Gerber and CAD Files

Gerber and CAD files can be downloaded from the associated product folder.

7 PCB Layout Diagrams

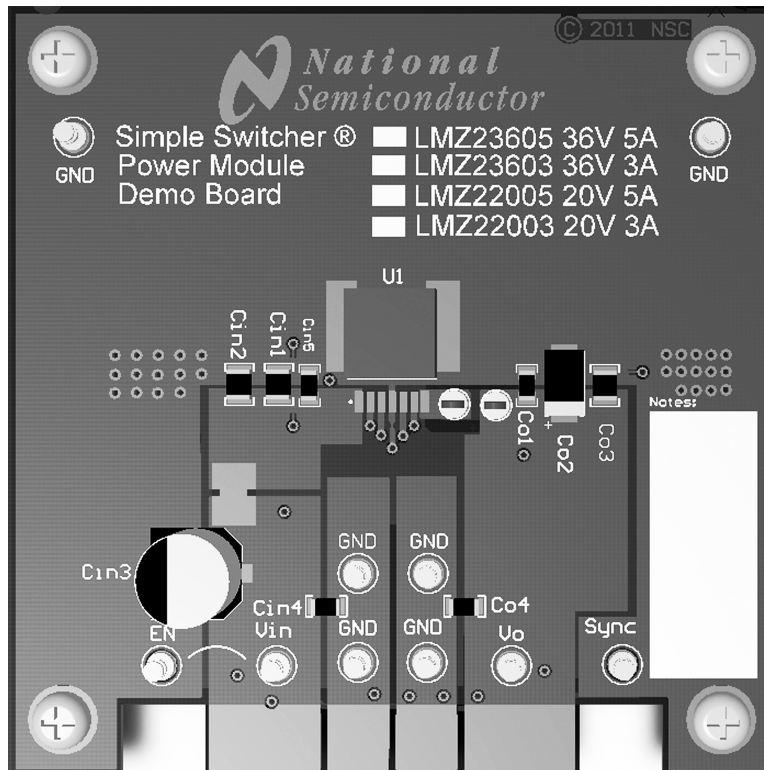


Figure 2. Top View of Assembly

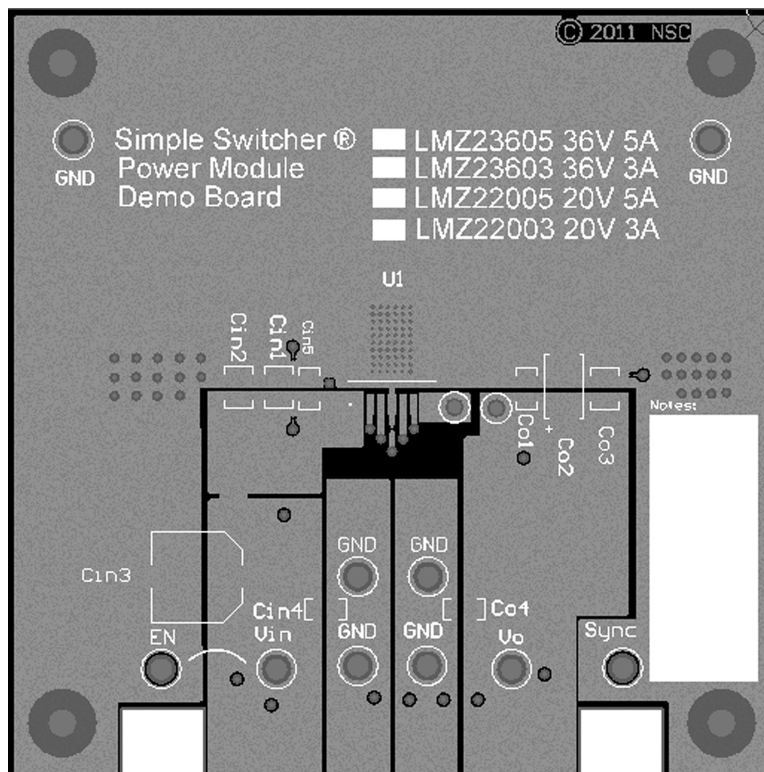
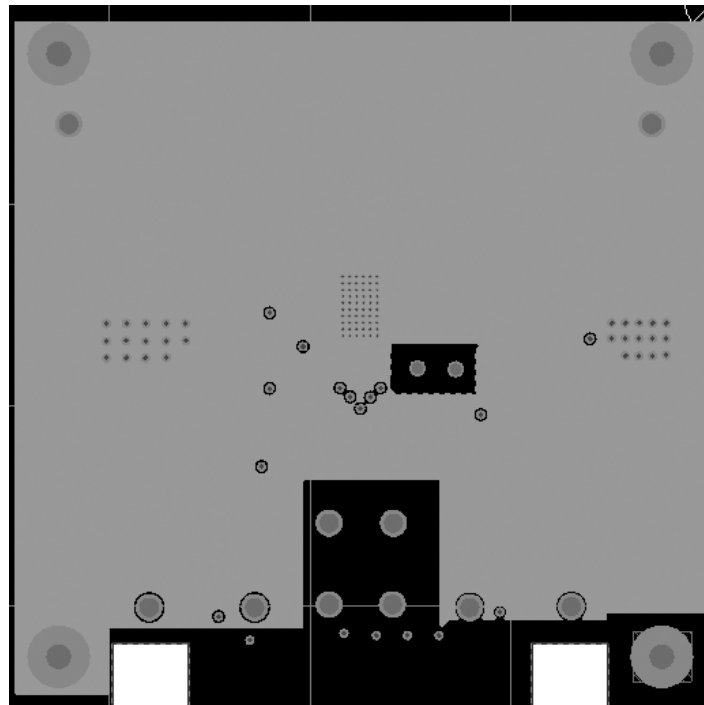
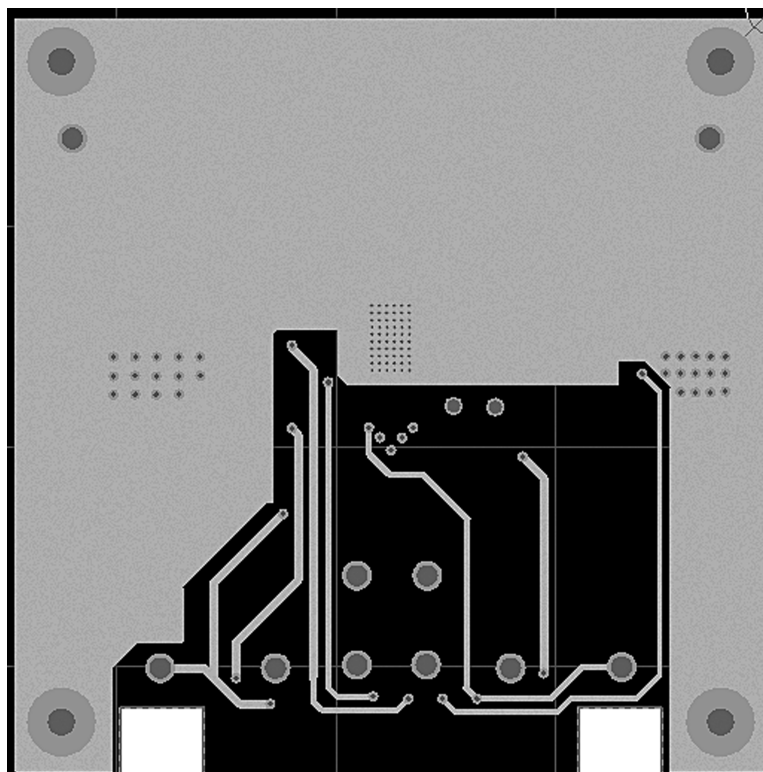


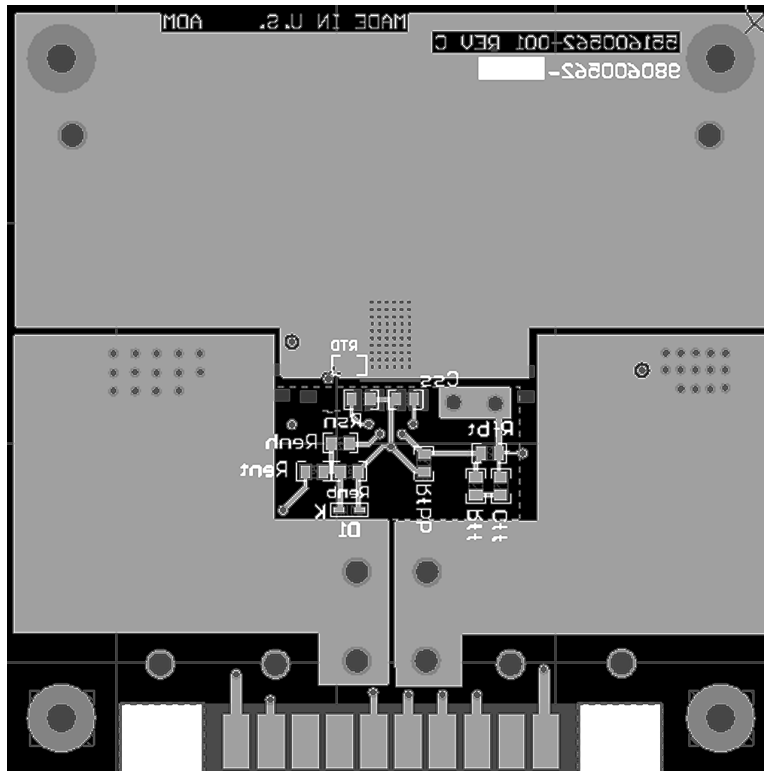
Figure 3. Top Layer



**Figure 4. Internal Layer I (Ground)
Heat Sinking Layer**

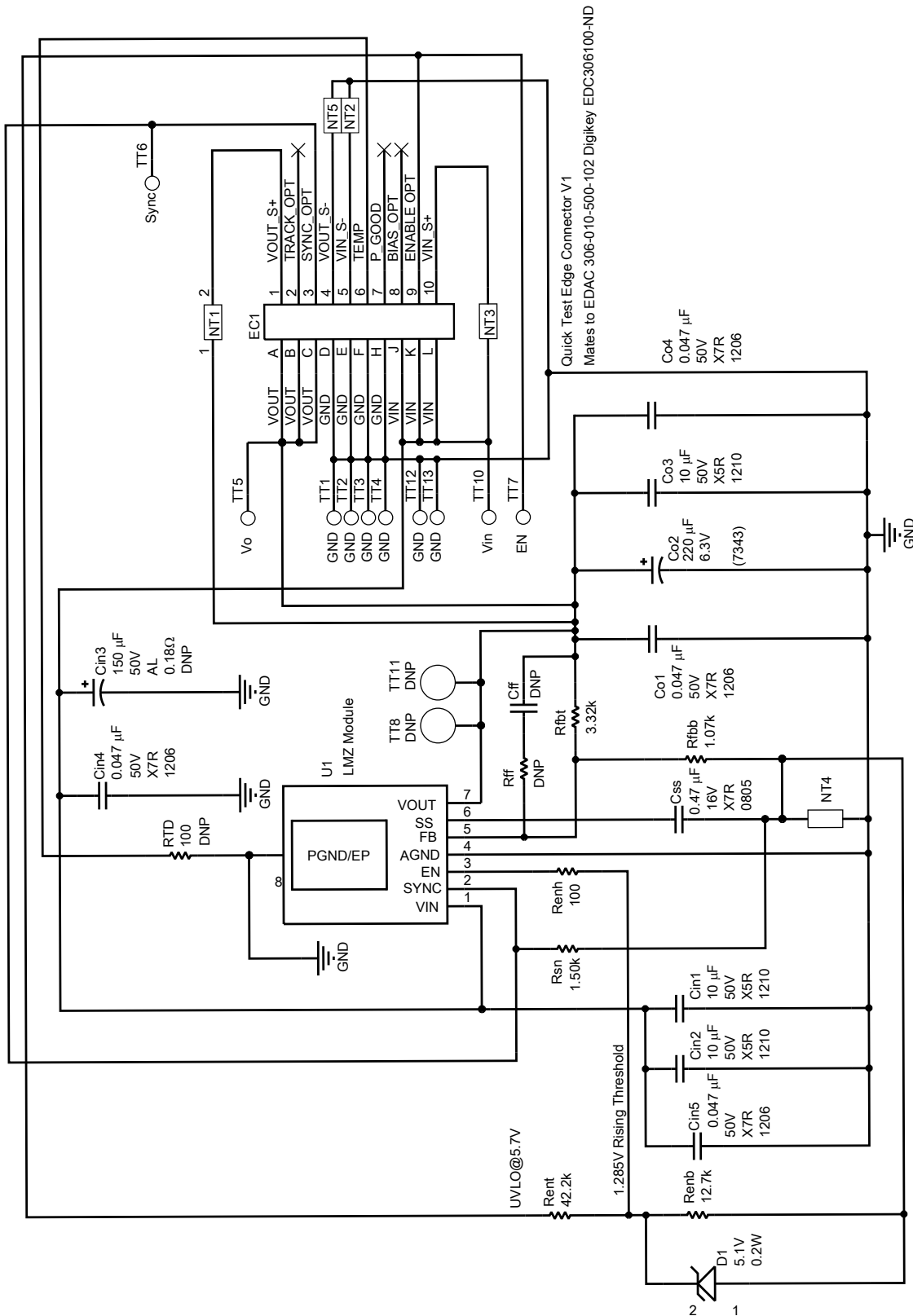


**Figure 5. Internal Layer II (Ground and Routing)
Heat Sinking Layer**



**Figure 6. Bottom Layer (Ground)
Heat Sinking Layer**

8 Schematic



DNP = Component not populated

Figure 7. LMZ23605/03, LMZ22005/03 PCB CAD package schematic

9 Bill of Materials

Table 1. Bill of Materials ($V_{IN} = 6V$ to $V_{max} 36V$ (20V), $V_{OUT} = 3.3V$, $I_{OUT (MAX)} = 5A$ (3A))⁽¹⁾

Designator	Description	Case Size	Manufacturer	Manufacturer P/N	Qty
U1	SIMPLE SWITCHER®	PFM-7	Texas Instruments	LMZ23605, LMZ23603, LMZ22005, LMZ22003	1
C_{IN4} , C_{IN5} , C_{O1} , C_{O4}	0.047 μ F, X7R, 50V	1206	Yageo America	CC1206KZX7R9BB473	4
C_{IN1} , C_{IN2}	10 μ F, X5R, 50V	1210	Taiyo Yuden	UMK325BJ106MM-T	2
C_{IN3} OPT	150 μ F, Aluminum Electrolytic, 50V	G	Panasonic	EEE-FK1H151P	1
C_{O3}	10 μ F, X5R, 50V	1210	TDK	UMK325BJ106MM-T	1
C_{O2}	220 μ F, Specialty Polymer, 6.3V		Panasonic	EEF-UE0J221LR	1
C_{FF}	DNP				
C_{SS}	0.47 μ F, X7R, 16V	0805	AVX	0805YC474KAT2A	1
D1	5.1V 200mW	SOD-323	Diodes Inc.	MMSZ5231BS-7-F	1
R_{ENB}	12.7 k Ω	0805	Panasonic	ERJ-6ENF1272V	1
R_{ENT}	42.2 k Ω	0805	Panasonic	ERJ-6ENF4222V	1
R_{ENH}	100 Ω	0805	Vishay-Dale	CRCW0805100RFKEA	1
R_{FBT}	3.32 k Ω	0805	Vishay-Dale	CRCW08053K32FKEA	1
R_{FBB}	1.07 k Ω	0805	Vishay-Dale	CRCW08051K07FKEA	1
R_{FF}	DNP				
R_{SN}	1.50 k Ω	0805	Vishay-Dale	CRCW08051K50FKEA	1

⁽¹⁾ The same BOM applies to all implementations.

IMPORTANT NOTICE

Texas Instruments Incorporated and its subsidiaries (TI) reserve the right to make corrections, enhancements, improvements and other changes to its semiconductor products and services per JESD46, latest issue, and to discontinue any product or service per JESD48, latest issue. Buyers should obtain the latest relevant information before placing orders and should verify that such information is current and complete. All semiconductor products (also referred to herein as "components") are sold subject to TI's terms and conditions of sale supplied at the time of order acknowledgment.

TI warrants performance of its components to the specifications applicable at the time of sale, in accordance with the warranty in TI's terms and conditions of sale of semiconductor products. Testing and other quality control techniques are used to the extent TI deems necessary to support this warranty. Except where mandated by applicable law, testing of all parameters of each component is not necessarily performed.

TI assumes no liability for applications assistance or the design of Buyers' products. Buyers are responsible for their products and applications using TI components. To minimize the risks associated with Buyers' products and applications, Buyers should provide adequate design and operating safeguards.

TI does not warrant or represent that any license, either express or implied, is granted under any patent right, copyright, mask work right, or other intellectual property right relating to any combination, machine, or process in which TI components or services are used. Information published by TI regarding third-party products or services does not constitute a license to use such products or services or a warranty or endorsement thereof. Use of such information may require a license from a third party under the patents or other intellectual property of the third party, or a license from TI under the patents or other intellectual property of TI.

Reproduction of significant portions of TI information in TI data books or data sheets is permissible only if reproduction is without alteration and is accompanied by all associated warranties, conditions, limitations, and notices. TI is not responsible or liable for such altered documentation. Information of third parties may be subject to additional restrictions.

Resale of TI components or services with statements different from or beyond the parameters stated by TI for that component or service voids all express and any implied warranties for the associated TI component or service and is an unfair and deceptive business practice. TI is not responsible or liable for any such statements.

Buyer acknowledges and agrees that it is solely responsible for compliance with all legal, regulatory and safety-related requirements concerning its products, and any use of TI components in its applications, notwithstanding any applications-related information or support that may be provided by TI. Buyer represents and agrees that it has all the necessary expertise to create and implement safeguards which anticipate dangerous consequences of failures, monitor failures and their consequences, lessen the likelihood of failures that might cause harm and take appropriate remedial actions. Buyer will fully indemnify TI and its representatives against any damages arising out of the use of any TI components in safety-critical applications.

In some cases, TI components may be promoted specifically to facilitate safety-related applications. With such components, TI's goal is to help enable customers to design and create their own end-product solutions that meet applicable functional safety standards and requirements. Nonetheless, such components are subject to these terms.

No TI components are authorized for use in FDA Class III (or similar life-critical medical equipment) unless authorized officers of the parties have executed a special agreement specifically governing such use.

Only those TI components which TI has specifically designated as military grade or "enhanced plastic" are designed and intended for use in military/aerospace applications or environments. Buyer acknowledges and agrees that any military or aerospace use of TI components which have **not** been so designated is solely at the Buyer's risk, and that Buyer is solely responsible for compliance with all legal and regulatory requirements in connection with such use.

TI has specifically designated certain components as meeting ISO/TS16949 requirements, mainly for automotive use. In any case of use of non-designated products, TI will not be responsible for any failure to meet ISO/TS16949.

Products

Audio	www.ti.com/audio
Amplifiers	amplifier.ti.com
Data Converters	dataconverter.ti.com
DLP® Products	www.dlp.com
DSP	dsp.ti.com
Clocks and Timers	www.ti.com/clocks
Interface	interface.ti.com
Logic	logic.ti.com
Power Mgmt	power.ti.com
Microcontrollers	microcontroller.ti.com
RFID	www.ti-rfid.com
OMAP Applications Processors	www.ti.com/omap
Wireless Connectivity	www.ti.com/wirelessconnectivity

Applications

Automotive and Transportation	www.ti.com/automotive
Communications and Telecom	www.ti.com/communications
Computers and Peripherals	www.ti.com/computers
Consumer Electronics	www.ti.com/consumer-apps
Energy and Lighting	www.ti.com/energy
Industrial	www.ti.com/industrial
Medical	www.ti.com/medical
Security	www.ti.com/security
Space, Avionics and Defense	www.ti.com/space-avionics-defense
Video and Imaging	www.ti.com/video

TI E2E Community

e2e.ti.com