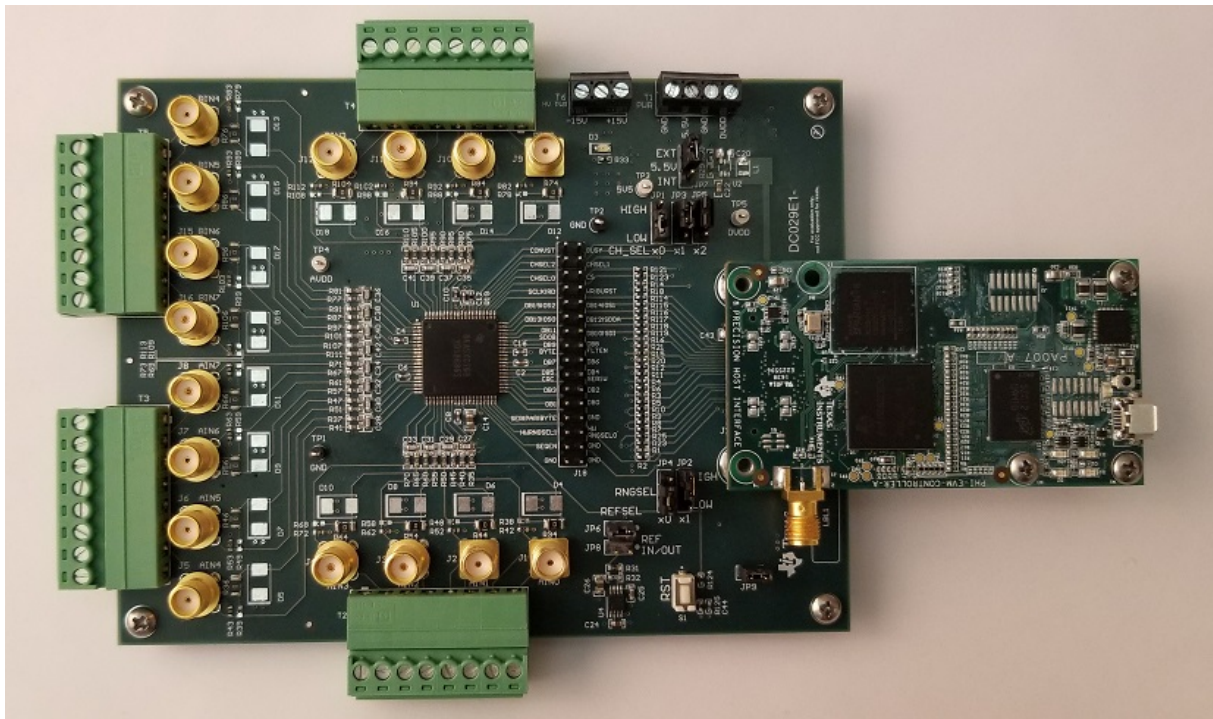


## **ADS8686SEVM-PDK Evaluation Module**



This user's guide describes the characteristics, operation, and use of the ADS8686S evaluation module (EVM) performance demonstration kit (PDK). The ADS8686S is a 16-channel, integrated front-end data acquisition (DAQ) system based on a dual, simultaneous-sampling, 16-bit successive approximation (SAR) analog-to-digital converter (ADC). Each input channel on the device supports true bipolar input ranges of  $\pm 10$  V,  $\pm 5$  V, or  $\pm 2.5$  V with single-supply operation. The device includes an analog front-end offering a 1-M $\Omega$ , constant resistive input impedance. The ADS8686SEVM supports all the mentioned features and provides provisions for an external reference, user-selectable oversampling ratio, and features 16 input channels. The EVM-PDK eases the evaluation of the ADS8686S device and any devices derived from the ADS8686X family with hardware, software, and computer connectivity through the universal serial bus (USB) interface. This user's guide includes complete circuit descriptions, schematic diagrams, and a bill of materials using the ADS8686S device as an example throughout the document. Throughout this document, the terms *EVM-PDK* and *ADS8686SEVM* are synonymous with the *ADS8686SEVM-PDK*.

The following related documents are available through the Texas Instruments web site at [www.ti.com](http://www.ti.com).

### **Related Documentation**

<b>Device</b>	<b>Literature Number</b>
<a href="#">ADS8686S</a>	<a href="#">SBAS905</a>
<a href="#">REF5025</a>	<a href="#">SBOS410</a>
<a href="#">TPS7A4700</a>	<a href="#">SBVS204</a>
<a href="#">OPA192</a>	<a href="#">SBOS620</a>
<a href="#">INA149</a>	<a href="#">SBOS579</a>

## Contents

1	Overview .....	4
	1.1 ADS8686SEVM-PDK Features .....	4
	1.2 ADS8686SEVM Features .....	4
2	EVM Analog Interface .....	5
	2.1 ADS8686S Internal Reference and EVM Onboard Reference .....	7
3	Digital Interfaces .....	7
	3.1 ADS8686S Digital Interface .....	7
4	Power Supplies .....	8
	4.1 Device Power Supplies .....	8
	4.2 High-Voltage Power Supplies .....	9
5	Initial Setup .....	10
	5.1 Default Jumper Settings .....	10
	5.2 EVM Graphical User Interface (GUI) Software Installation .....	11
6	Operation .....	14
	6.1 EVM GUI Global Settings for ADC Control .....	16
	6.2 Register Map Configurations .....	17
	6.3 Device Configuration .....	17
	6.4 Time Domain Display Tool .....	20
	6.5 Spectral Analysis Tool .....	21
	6.6 Histogram Analysis Tool .....	22
	6.7 Linearity Analysis Tool .....	23
7	Bill of Materials, PCB Layout, and Schematics .....	24
	7.1 Bill of Materials .....	24
	7.2 PCB Layout .....	27
	7.3 Schematics .....	29

## List of Figures

1	ADS8686SEVM Analog Input Connections for Channels .....	5
2	REF5025 2.5-V External Reference Source .....	7
3	High-Voltage Power Supply for Amplifiers .....	9
4	ADS8686SEVM Default Jumper Settings .....	10
5	Software Installation Prompts .....	11
6	ADS8686S Device Driver Installation Wizard Prompts .....	12
7	LabVIEW Run-Time Engine Installation .....	12
8	Software Installation Complete Prompts .....	13
9	ADS8686S EVM Folder Post-Installation .....	13
10	ADS8686SEVM-PDK Hardware Setup and LED Indicators .....	14
11	Launch the ADS8686SEVM GUI Software .....	15
12	EVM GUI Global Input Parameters .....	16
13	Register Map Configuration Display .....	17
14	Device Configuration in Software Mode .....	18
15	Device Configuration Display in Hardware Mode .....	19
16	Time Domain Display .....	20
17	Spectral Analysis Tool .....	21
18	Histogram Analysis Tool .....	22
19	Linearity Analysis Tool .....	23
20	ADS8686S EVM PCB: Top Overlay .....	27
21	ADS8686S EVM PCB Layer 1: Top Layer .....	27
22	ADS8686S EVM PCB Layer 2: GND Plane .....	27
23	ADS8686S EVM PCB Layer 3: Power Planes .....	27

24	ADS8686S EVM PCB Layer 4: Bottom Layer .....	27
25	ADS8686S EVM PCB: Bottom Overlay .....	27
26	ADS8686SEVM-PDK Schematic.....	29
27	ADS8686SEVM-PDK Schematic.....	30
28	ADS8686SEVM-PDK Schematic.....	31
29	ADS8686SEVM-PDK Schematic.....	32
30	ADS8686SEVM-PDK Schematic.....	33
31	ADS8686SEVM-PDK Schematic.....	34

#### List of Tables

1	Terminal Block Analog Interface Connections .....	6
2	SMA Analog Interface ADC-A Connections .....	6
3	SMA Analog Interface ADC-B Connections .....	6
4	Digital I/O Connections for Connector J17 .....	7
5	Default Jumper Configuration .....	10
6	External Source Requirements for Evaluation of the ADS8686S.....	21
7	External Source Requirements for ADS8686S Evaluation .....	23
8	ADS8686S EVM Bill of Materials .....	24

#### Trademarks

Windows 7, Windows 8, Windows 10 are registered trademarks of Microsoft Corporation.

LabVIEW is a trademark of National Instruments.

Phoenix Contact is a trademark of Samtec, Inc.

All other trademarks are the property of their respective owners.

## 1 Overview

The ADS8686SEVM-PDK is a platform for evaluating the performance of the ADS8686X family. The EVM-PDK comes with the ADS8686S SAR ADC, a 16-channel, 16-bit,  $\pm 10\text{-V}$ ,  $\pm 5\text{-V}$ , or  $\pm 2.5\text{-V}$  input range, simultaneous-sampling ADC device. The evaluation kit includes the ADS8686SEVM board and the precision host interface (PHI) controller board that enables the accompanying computer software to communicate with the ADC over the USB for data capture and analysis.

The ADS8686SEVM board includes the ADS8686S SAR ADC and all peripheral analog circuits and components required to extract optimum performance from the ADC.

The PHI board primarily serves three functions:

- Provides a communication interface from the EVM to the computer through a USB port
- Provides the digital input and output signals necessary to communicate with the ADS8686SEVM
- Supplies power to the digital circuitry on the ADS8686SEVM board

Along with the ADS8686SEVM and PHI controller board, this evaluation kit includes an A-to-micro-B USB cable to connect to a computer.

### 1.1 ADS8686SEVM-PDK Features

The ADS8686SEVM-PDK includes the following features:

- Hardware and software required for diagnostic testing as well as accurate performance evaluation of the ADS8686X family of SAR ADC devices
- USB digital power to enable digital communication
- The PHI controller that provides a convenient communication interface to the ADS8686S ADC over a USB 2.0 (or higher) for digital input and output
- Easy-to-use evaluation software for Windows 7®, Windows 8®, and Windows 10® 64-bit operating systems
- The software suite includes graphical tools for data capture, histogram analysis, spectral analysis, and linearity analysis. This suite also has a provision for exporting data to a text file for post-processing.

### 1.2 ADS8686SEVM Features

The ADS8686SEVM includes the following features:

- Onboard SMB and terminal block connectors and RC input filters
- Jumper-selectable onboard precision 2.5-V voltage reference or the ADS8686X family devices internal reference
- Jumper-selectable  $\pm 10\text{-V}$ ,  $\pm 5\text{-V}$ , or  $\pm 2.5\text{-V}$  range
- Jumper-selectable channel sequence selection
- Onboard, ultralow noise, low-dropout (LDO) regulator for excellent 5.0-V, single-supply regulation of the ADC and onboard voltage reference

## 2 EVM Analog Interface

The ADS8686SEVM is designed for easy interfacing to analog sources. The four Phoenix Contact™ 8-terminal headers paired with a respective screw connection tension sleeve, T2 thru T5, provides convenient and interchangeable access points to all input channels (AIN\_0A to AIN\_7A and AIN\_0B to AIN\_7B) of the device. In addition, the 16 SMB connectors footprints, J-1 to J-16, provide high-quality connections to channels AIN\_0A to AIN\_7A and AIN\_0B to AIN\_7B. Figure 1 shows the ADS8686SEVM analog input connections and input RC filters for channels AIN\_0A to AIN\_7A. Table 1 lists the analog interface connections for header JP1 and Table 2 lists the analog interface connections for the SMB connectors.

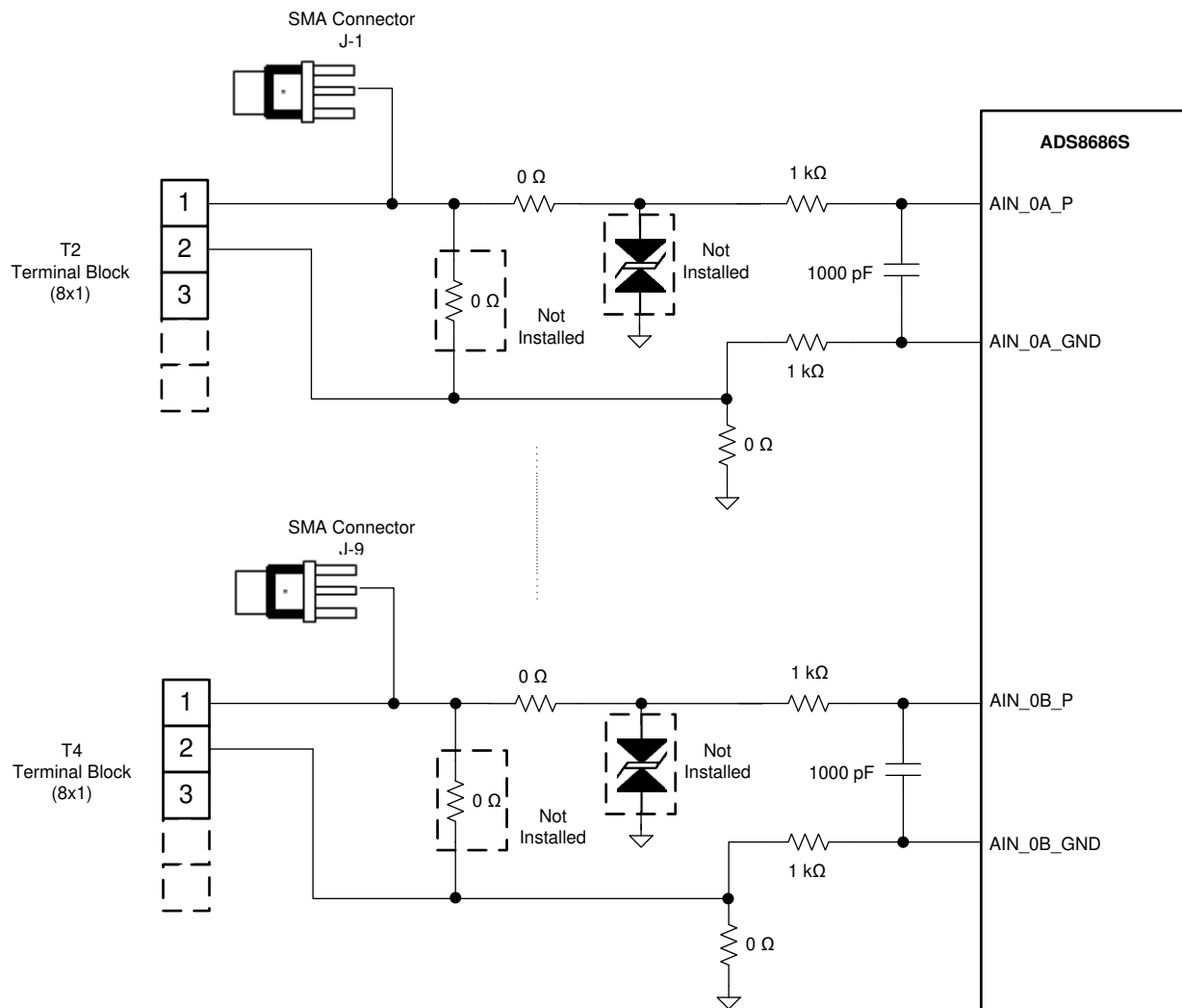


Figure 1. ADS8686SEVM Analog Input Connections for Channels

**Table 1. Terminal Block Analog Interface Connections**

Terminal # - Pin Number	Signal	Description
T2/3 - 1	AIN_0/7A_P	Positive analog input for channel AIN0A OR positive analog input for channel AIN7A
T2/3 - 2	AIN_0/7A_GND	Negative analog input for channel AIN0A OR negative analog input for channel AIN7A
T2/3 - 3	AIN_1/6A_P	Positive analog input for channel AIN1A OR positive analog input for channel AIN6A
T2/3 - 4	AIN_1/6A_GND	Negative analog input for channel AIN1A OR negative analog input for channel AIN6A
T2/3 - 5	AIN_2/5A_P	Positive analog input for channel AIN2A OR positive analog input for channel AIN5A
T2/3 - 6	AIN_2/5A_GND	Negative analog input for channel AIN2A OR negative analog input for channel AIN5A
T2/3 - 7	AIN_3/4A_P	Positive analog input for channel AIN3A OR positive analog input for channel AIN4A
T2/3 - 8	AIN_3/4A_GND	Negative analog input for channel AIN3A OR negative analog input for channel AIN4A
T4/5 - 1	AIN_0/7B_P	Positive analog input for channel AIN0B OR positive analog input for channel AIN7B
T4/5 - 2	AIN_0/7B_GND	Negative analog input for channel AIN0B OR negative analog input for channel AIN7B
T4/5 - 3	AIN_1/6B_P	Positive analog input for channel AIN1B OR positive analog input for channel AIN6B
T4/5 - 4	AIN_1/6B_GND	Negative analog input for channel AIN1B OR negative analog input for channel AIN6B
T4/5 - 5	AIN_2/5B_P	Positive analog input for channel AIN2B OR positive analog input for channel AIN5B
T4/5 - 6	AIN_2/5B_GND	Negative analog input for channel AIN2B OR negative analog input for channel AIN5B
T4/5 - 7	AIN_3/4B_P	Positive analog input for channel AIN3B OR positive analog input for channel AIN4B
T4/5 - 8	AIN_3/4B_GND	Negative analog input for channel AIN3B OR negative analog input for channel AIN4B

**Table 2. SMA Analog Interface ADC-A Connections**

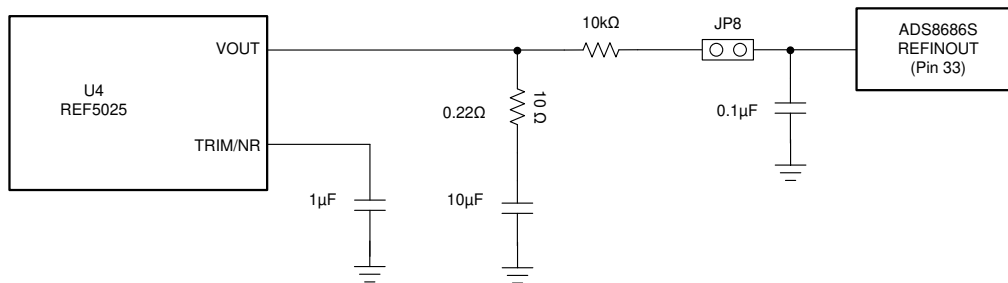
SMA Connector	Signal	Description
J-1	AIN_0A	Analog input for channel AIN_0A
J-2	AIN_1A	Analog input for channel AIN_1A
J-3	AIN_2A	Analog input for channel AIN_2A
J-4	AIN_3A	Analog input for channel AIN_3A
J-5	AIN_4A	Analog input for channel AIN_4A
J-6	AIN_5A	Analog input for channel AIN_5A
J-7	AIN_6A	Analog input for channel AIN_6A
J-8	AIN_7A	Analog input for channel AIN_7A

**Table 3. SMA Analog Interface ADC-B Connections**

SMA Connector	Signal	Description
J-9	AIN_0B	Analog input for channel AIN_0B
J-10	AIN_1B	Analog input for channel AIN_1B
J-11	AIN_2B	Analog input for channel AIN_2B
J-12	AIN_3B	Analog input for channel AIN_3B
J-13	AIN_4B	Analog input for channel AIN_4B
J-14	AIN_5B	Analog input for channel AIN_5B
J-15	AIN_6B	Analog input for channel AIN_6B
J-16	AIN_7B	Analog input for channel AIN_7B

## 2.1 ADS8686S Internal Reference and EVM Onboard Reference

The ADS8686S device incorporates an internal 2.5-V reference. Alternatively, the user can select the onboard 2.5-V reference, REF5025 (U4). The reference voltage source is determined by setting REFSEL (pin 35) of the ADS8686S device. By default, the evaluation module is set up with the ADS8686S internal reference source, with a shunt jumper installed on JP6 (REFSEL). If the onboard REF5025 2.5-V reference is desired, the shunt jumper must be removed from JP6 and placed on JP8 (REFIN/OUT). For more information, see [Section 5.1](#). The output of the REF5025 is filtered through a passive RC filter and connected to the REFINOUT pin (pin 33) of the ADS8686S using jumper JP8 (REFIN/OUT). [Figure 2](#) shows a schematic for the reference circuit.



**Figure 2. REF5025 2.5-V External Reference Source**

## 3 Digital Interfaces

As noted in [Section 1](#), the EVM interfaces with the PHI that, in turn, communicates with the computer over the USB. There are two devices on the EVM with which the PHI communicates: the ADS8686S ADC (over a single or dual SDO serial interface or parallel interface) and the EEPROM (over I<sup>2</sup>C). The EEPROM comes preprogrammed with the information required to configure and initialize the ADS8686SEVM-PDK platform. The EEPROM is initially programmed to communicate with the ADS8686S, but can be reprogrammed for any of the supported devices in the ADS8686X device family through their respective GUI software. See [Section 5.2](#) for more information and instructions. After the hardware is initialized, the EEPROM is no longer used.

### 3.1 ADS8686S Digital Interface

The ADS8686SEVM-PDK supports parallel, parallel byte, and serial digital interface as detailed in the [ADS8686S data sheet](#). The PHI controller is configured to operate at a 3.3-V logic level and is directly connected to the digital I/O lines of the ADC. The digital interface configuration can be easily selected by navigating within the ADS8686SEVM GUI to *Device Configuration* tab. For more information, see [Section 6.1](#).

Socket strip connector J17 provides the digital I/O connections between the ADS8686SEVM board and the PHI controller. [Table 4](#) summarizes the pin outs for connector J17.

**Table 4. Digital I/O Connections for Connector J17**

Pin Number	Signal	Description
J17.6, J17.8, J17.10	DB15/OS2, DB14/OS1, DB13/OS0	Parallel data output connections OR oversampling mode control pins
J17.12, J17.14,	DB12/SDOA, DB11/SDOB	Parallel data output connections OR serial data output connections
J17.16,	DB10/SDI	Parallel data output connections OR serial data input connections
J17.18	DB9/BYTESEL	Parallel data output connections OR enable parallel byte interface
J17.20	DB8/FLTEN	Parallel data output connections
J17.22, J17.24	DB7, DB6	Parallel data output connections
J17.26	DB5/CRCEN	Parallel data output connections OR enable CRC word
J17.28	DB4/SER1W	Parallel data output connections OR serial data output wire select

**Table 4. Digital I/O Connections for Connector J17 (continued)**

Pin Number	Signal	Description
J17.30	DB3	Parallel data output connections
J17.32, J17.34	CSn	$\overline{CS}$ select, active low
J17.36	SCLK/RD	Clock input pin in serial interface mode OR active-low ready input pin in parallel and parallel byte interface
J17.38, J17.40, J17.42	DB2, DB1, DB0	Parallel data output connections
J17.44	CONVST	Active high logic input to control start of conversion
J17.46, J17.48	HW_RNGSEL1,0	Pins used to select input range of device ( $\pm 10$ V, $\pm 5$ V, or $\pm 2.5$ V)
J17.50	DVDD	3.3-V digital supply from the PHI controller board
J17.56, J17.58	I <sup>2</sup> C Bus	I <sup>2</sup> C bus; used only to read the EEPROM (U5) in the EVM board
J17.3, J17.60	GND	Ground connections
J1721	WR/BURST	Write register configuration in parallel and parallel byte modes OR enable burst mode
J17.23	BUSY	Active high digital output indicating ongoing conversion
J17.31	SEQEN	Active high digital input enabling channel sequencer
J17.33	RESET	Active low logic input to reset the device
J17.39	SER/BYTE/PAR	Logic input pin to select between serial, parallel byte, or parallel interface mode
J17.41, J17.43, J17.45	CHSEL0,1,2	Logic input pin to select channel for hardware mode sequencer
J17.59	ID_POWER	Power supply used only to power the EEPROM (U3) in the EVM board

## 4 Power Supplies

### 4.1 Device Power Supplies

The ADS8686S ADC analog supply (AVDD) is provided by a low-noise linear regulator (TPS7A4700). The regulator uses a 5.5-V external supply provided through terminal block T1 (PWR) connected in position 3 (5.5V), and position 4 (GND). This (TBD this what?) is connected to JP7 set to position EXT (pins 2 and 3). The switching regulator (U2) is not populated, and the EVM does not support setting JP7 in position INT (pins 1 and 2). The 3.3-V supply to the digital supply of the ADS8686S is provided directly by an LDO on the PHI controller. The power supply for each active component on the EVM is bypassed with a ceramic capacitor placed close to that component. Additionally, the EVM layout uses thick traces or large copper filled areas where possible between bypass capacitors and their loads to minimize inductance along the load current path.

#### CAUTION

When using the ADS8686SEVM in conjunction with the PHI controller, install a shunt between JP7 pins 2-3 as shown in [Figure 4](#). The PHI controller supplies the DVDD power supply. Do not use the JP7 internal setting or the device can be damaged.

#### CAUTION

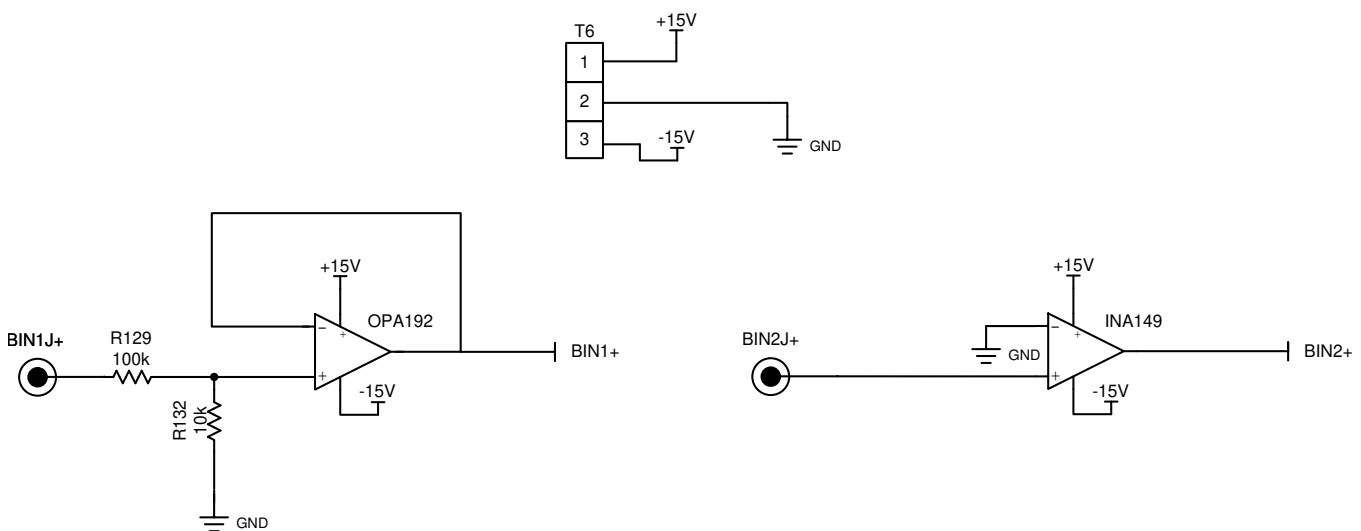
When using the ADS8686SEVM as a stand-alone board, install a shunt between JP7 (pins 2 and 3) and connect the analog supply (AVDD) on the terminal block T1 (position 3 or 4). For the digital supply (DVDD), remove R28 and supply DVDD on the terminal block T1 (position 1 or 2). Make sure that the AVDD voltage is in the range between 5.5 V to 6 V, and that DVDD is in the range of  $2.3 \text{ V} < \text{DVDD} < \text{AVDD}$  for proper device operation. Do not exceed the absolute maximum ratings for the ADS8686S device, or damage may occur.



## 4.2 High-Voltage Power Supplies

As shown in [Figure 3](#), the ADS8686SEVM is equipped with two input driving amplifiers for two ADS8686S analog inputs. The device input AIN\_0B can be driven by U6, the [OPA192](#) (a precision rail-to-rail operational amplifier) in a buffer configuration. Input AIN\_B1 can be driven by a difference amplifier, U7 ([INA149](#)). Each of these amplifiers require positive and negative power rails over the expected maximum and minimum input levels, and the recommended supply is  $\pm 15$  V. Connect an external power supply to terminal block T6 (HV PWR) to provide the high-voltage supplies. See the respective device data sheet for more information.

By default, each of the amplifiers are bypassed. To include the OPA192 in the input driving circuit to channel AIN\_0B, remove the 0- $\Omega$  resistor, R127, and populate R129 and R128 with 0- $\Omega$  resistors. The input can be connected through either terminal block T4 (position 3 or 4) or by the BNC connector J10. To include the INA149 in the input driving circuit to channel AIN\_1B, remove the 0- $\Omega$  resistors, R130 and R133, and populate R134, R135, and R131. Inputs can be connected through either terminal block T4 (position 5 or 6) or by the BNC connector J11. To use a different value other than ground for input AIN\_1BGND, use terminal block T4, position 6.



**Figure 3. High-Voltage Power Supply for Amplifiers**

**NOTE:** The high-voltage power supplies connected to terminal block T6 only provide power to U6 and U7, the input driving amplifiers. The high-voltage power supplies are not connected to any other device on the board.

### CAUTION

Terminal T6 (HV PWR) on the ADS8686SEVM is intended for high-voltage supplies and does not have a protection scheme or regulation circuitry onboard. When connecting an external power supply to T6 use a clean and precise supply, otherwise damage can occur to the driving amplifiers U6 and U7.

## 5 Initial Setup

This section explains the initial hardware and software setup procedure that must be completed for the proper operation of the ADS8686SEVM-PDK.

### 5.1 Default Jumper Settings

Install a shunt at JP6 to select the internal reference. Install a shunt between JP7 (pins 2 and 3) as shown in Figure 4 to connect the onboard regulated AVDD 5.0-V supply. Figure 4 details the default jumper settings. Table 5 explains the configuration for these jumpers. When the EVM is paired with the PHI board, the jumper selections on JP1 thru JP5 have no effect in either hardware or software mode. The GUI provides user-selectable options to control these settings and overrides the jumper selection. When the EVM is used standalone, the jumper settings take effect in the device settings.

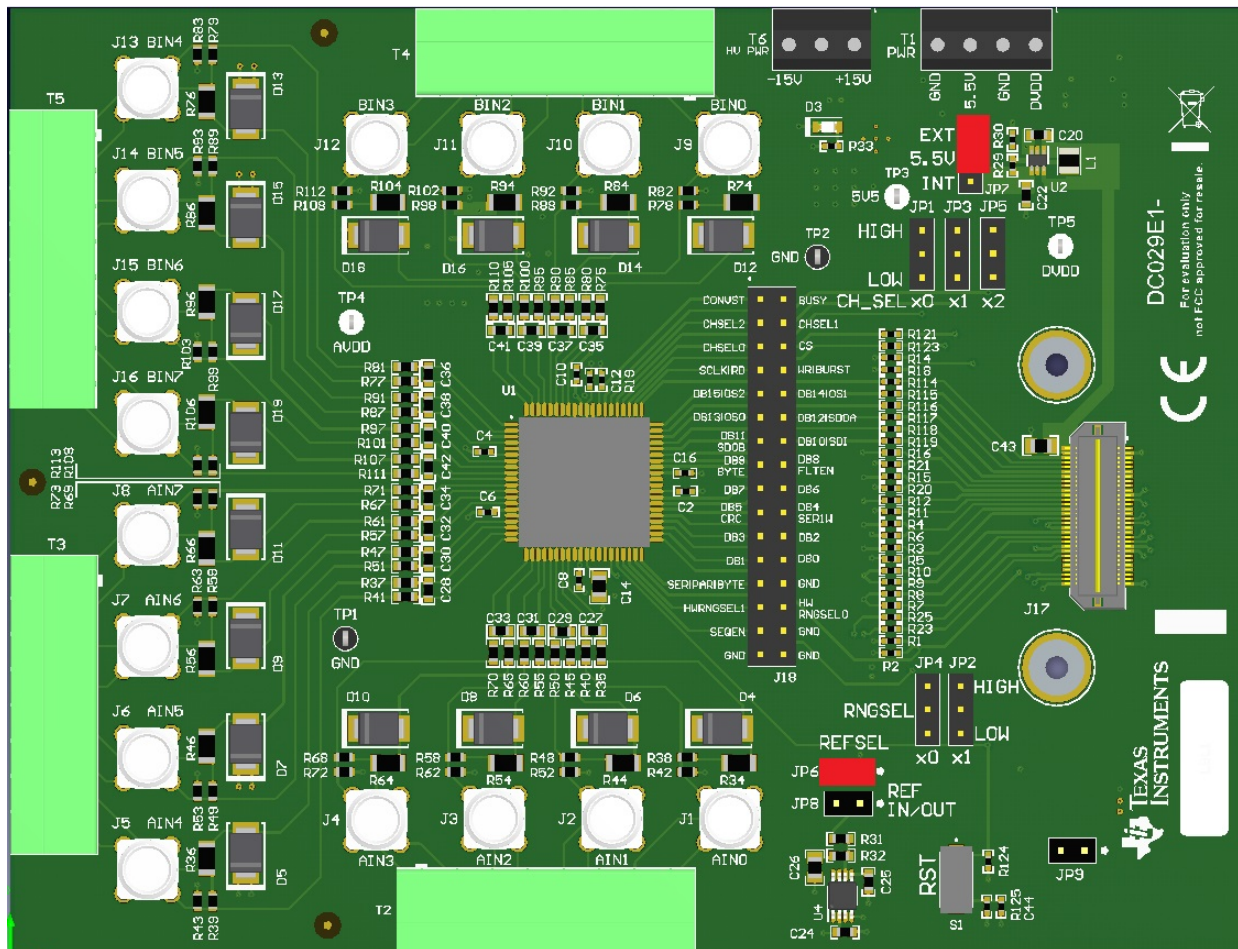


Figure 4. ADS8686SEVM Default Jumper Settings

Table 5. Default Jumper Configuration

Jumper	Function	Default Position	Description
JP1, JP3, JP5	CHSEL0, CHSEL1, CHSEL2	Open	1-2 logic high, 2-3 logic low. Programs the channel sequencer.
JP2, JP4	HW_RNGSEL0, HW_RNGSEL1	Open	1-2 logic high, 2-3 logic low. Selects the analog input range.
JP6	REFSEL	Closed	Open selects the external reference; closed selects the internal reference
JP7	AVDD Ext	Closed between pins 2 and 3	2-3 external source regulated with the onboard LDO to the AVDD 5.0-V supply

**Table 5. Default Jumper Configuration (continued)**

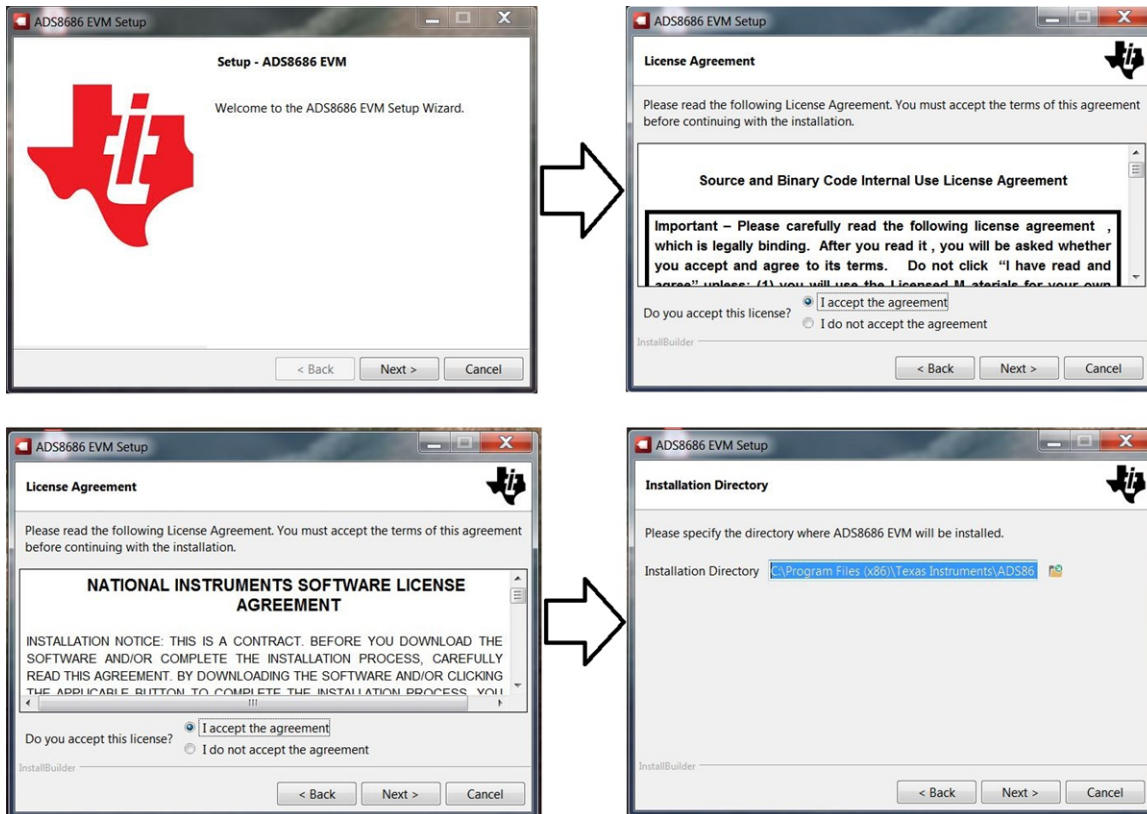
Jumper	Function	Default Position	Description
JP8	REFIN/OUT	Open	Open when using the internal reference; closed connects the external onboard reference

**5.2 EVM Graphical User Interface (GUI) Software Installation**

**NOTE:** Manually disable any antivirus software running on the computer before downloading the EVM GUI installer onto the local hard disk. Otherwise, depending on the antivirus settings, an error message may appear or the *installer.exe* file may be deleted.

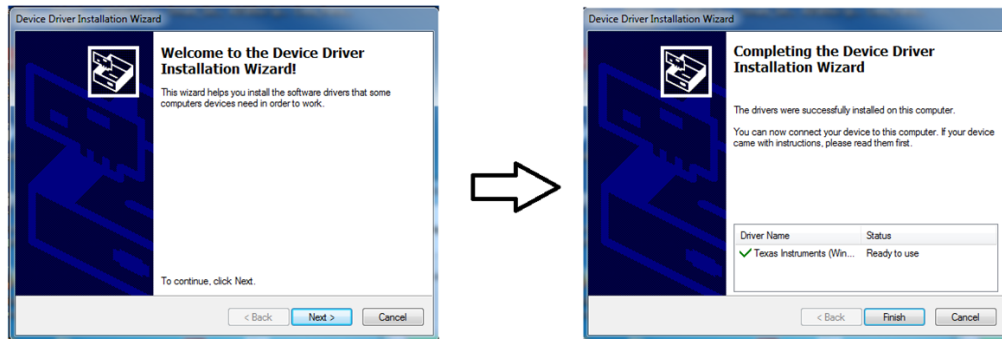
The following steps list the directions to install the software using the ADS8686S as an example. Download and install the ADS8686SEVM software GUI from the ADS8686SEVM-PDK product folder. Administrator privileges are required on the PC to install the EVM software.

Accept the license agreements and follow the on-screen instructions to complete the installation, as shown in Figure 5, after downloading and starting the GUI installer.



**Figure 5. Software Installation Prompts**

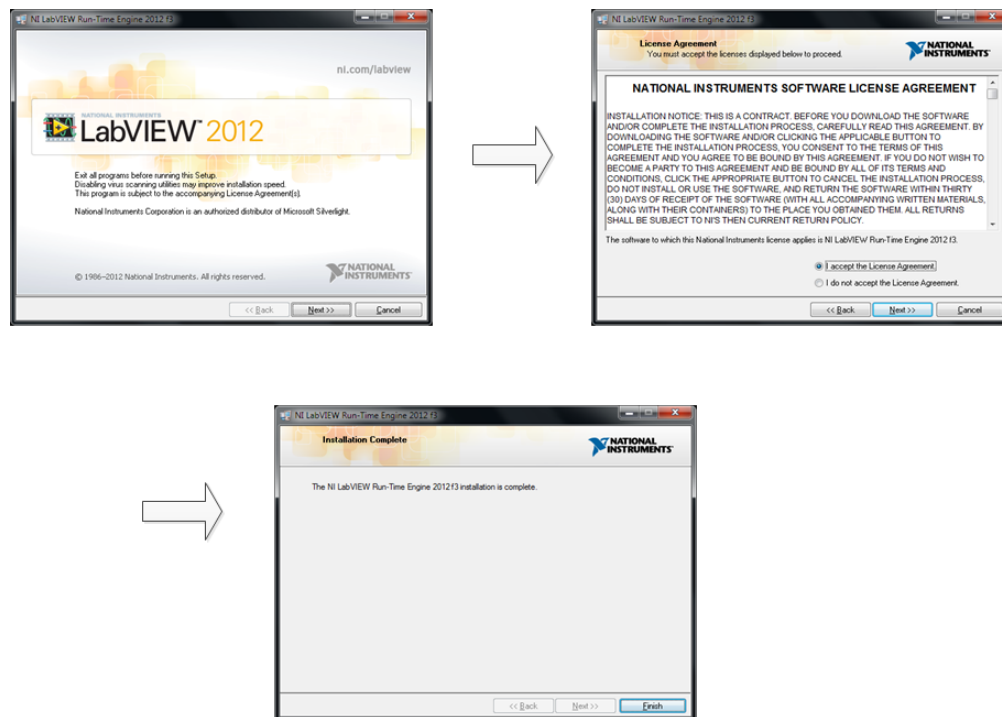
A prompt with a *Device Driver Installation* appears on the screen, as shown in [Figure 6](#), as part of the ADS8686S EVM GUI installation. Click *Next* to proceed.



**Figure 6. ADS8686S Device Driver Installation Wizard Prompts**

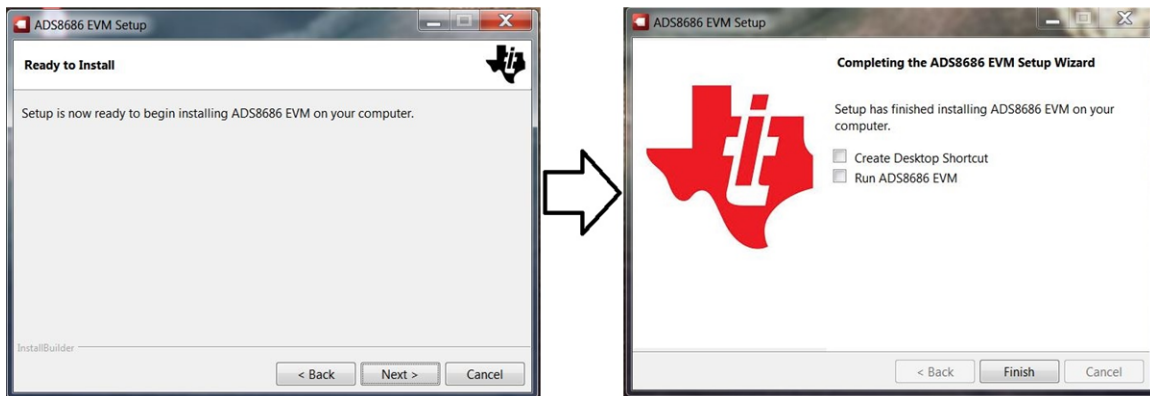
**NOTE:** A notice may appear on the screen stating that Widows cannot verify the publisher of this driver software. Select *Install this driver software anyway*.

The ADS8686SEVM-PDK requires the LabVIEW™ Run-Time Engine. A prompt appears for the installation of this software, as shown in [Figure 7](#), if not already installed.



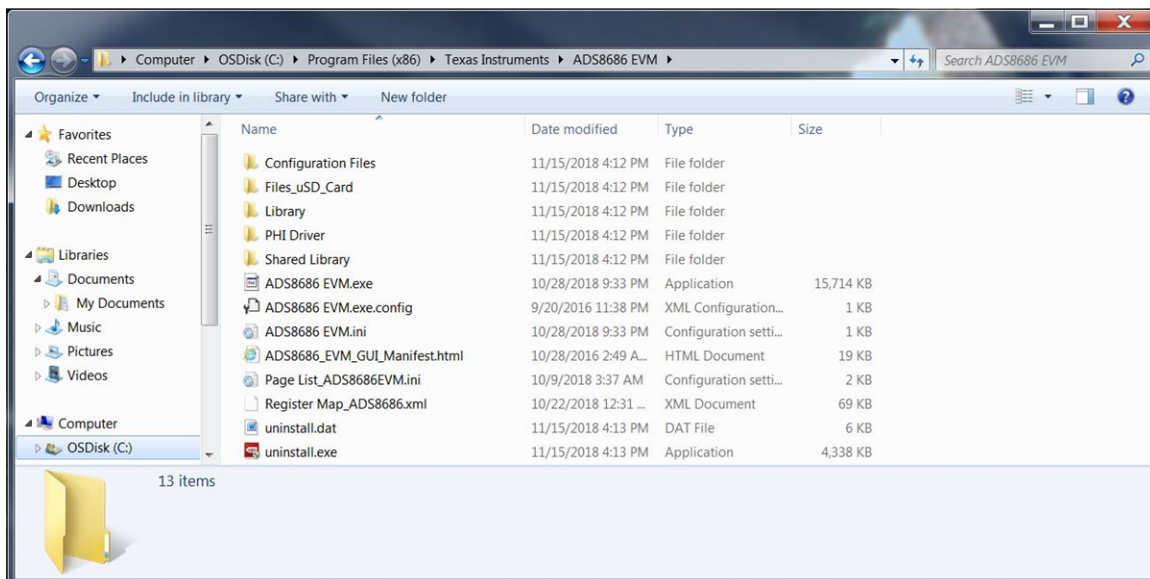
**Figure 7. LabVIEW Run-Time Engine Installation**

The installation is now complete. The prompts shown in [Figure 8](#) confirm that the software is installed.



**Figure 8. Software Installation Complete Prompts**

Verify that the contents of *C:\Program Files (x86)\Texas Instruments\ADS8686 EVM* is as shown in [Figure 9](#) after installation.

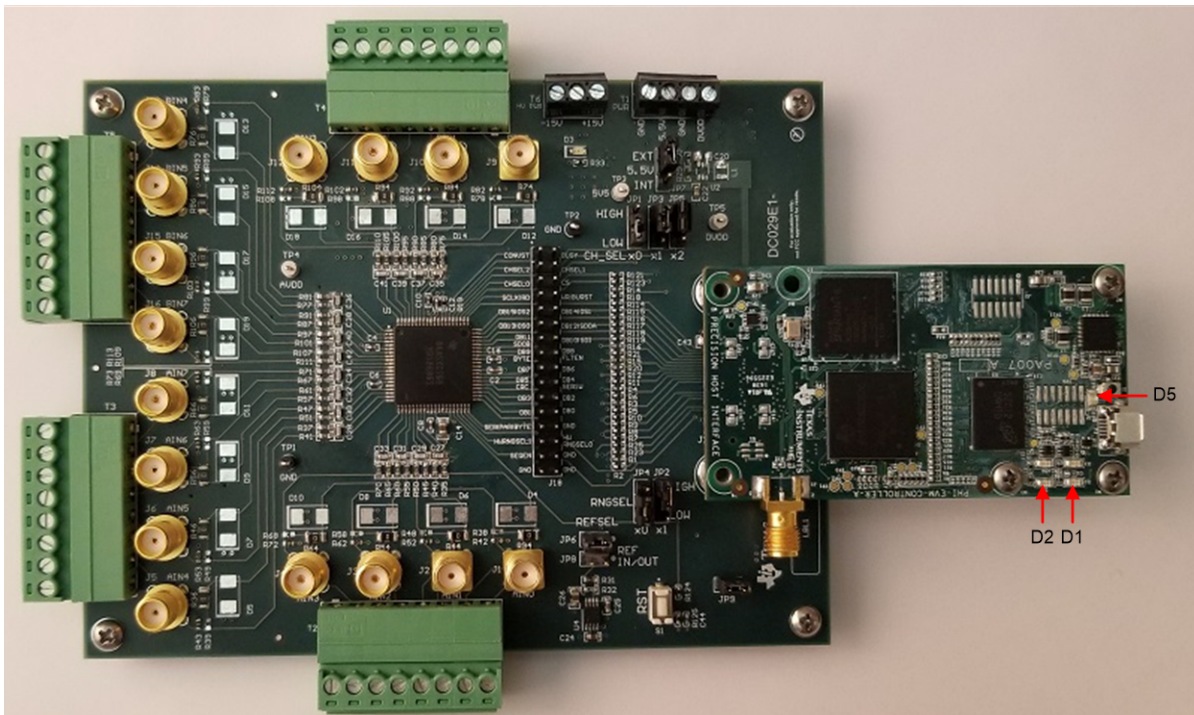


**Figure 9. ADS8686S EVM Folder Post-Installation**

## 6 Operation

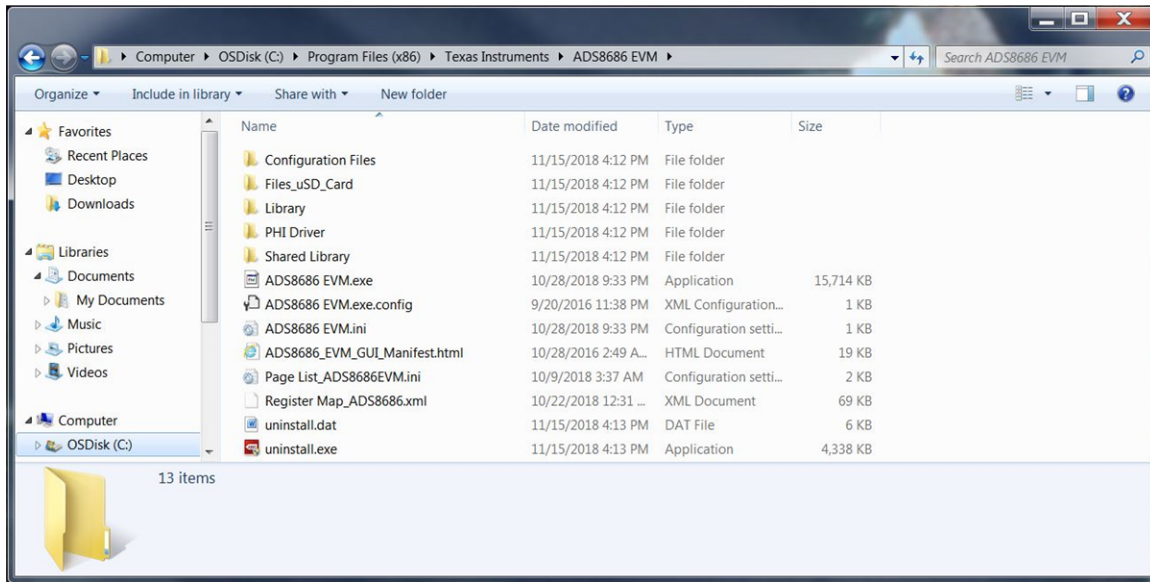
The following instructions are a step-by-step guide to connecting the ADS8686S to the computer and evaluating the performance of the ADS8686S:

1. Connect the ADS8686SEVM to the PHI. Install the two screws as indicated in [Figure 10](#).
2. Use the USB cable provided to connect the PHI to the computer.
  - a. LED D5 on the PHI lights up, indicating that the PHI is powered up.
  - b. LEDs D1 and D2 on the PHI starts blinking to indicate that the PHI is booted up and communicating with the PC. [Figure 10](#) shows the resulting LED indicators.



**Figure 10. ADS8686SEVM-PDK Hardware Setup and LED Indicators**

- As shown in [Figure 11](#), double click the *ADS8686EVM.exe* file to launch the EVM GUI.



**Figure 11. Launch the ADS8686SEVM GUI Software**

## 6.1 EVM GUI Global Settings for ADC Control

Although the EVM GUI does not allow direct access to the voltage levels and timing configuration of the ADC digital interface, the EVM GUI provides high-level control over the ADS8686S interface modes and RD/SCLK clock frequency. In addition, the EVM GUI provides control to device configuration settings such as sampling rate and number of samples to be captured, as well as register mapping such as input range selection, oversampling setting, and channel sequence selection.

Figure 12 shows the *Interface Configuration* pane at the left, through which timing functions of the ADS8686S are exercised. These are global settings and persist across the different GUI *Pages* listed in the top left pane. The *SCLK Frequency (Hz)* and *Sampling Rate (sps)* can be selected on this pane, depending on the selected interface and OSR settings. Enter the targeted values for these two parameters, and the GUI considers the timing constraints of the selected interface and computes the best values that can be achieved. Enter a *Target* value in the *SCLK Frequency (Hz)* field, and the GUI matches this frequency as closely as possible by changing the PHI PLL settings, and then displaying the *Achievable* frequency that may differ from the entered *Target* value. Similarly, adjust the ADC *Sampling Rate (sps)* by entering a *Target* value (Hz = sps). The *Achievable* ADC sampling rate can differ from the *Target* value, depending on the applied RD/SCLK frequency and selected Interface. The closest achievable match is then displayed. Therefore, this pane allows the various settings available on the ADS8686S to be tested in an iterative fashion until the best settings for the corresponding test scenario are achieved.

Displayed above this (TBD this what?) are the *Full Reset* and *Partial Reset* buttons. Each of these buttons initiates its respective reset type through software. A hardware reset can be initiated by pressing S1 RST on the EVM. When a master reset, either through software or hardware occurs the device resets to the default register settings. The GUI automatically generates a reset pulse when required to execute device configurations; there is no need to press the *Full Reset* button. At the bottom left, the *Current Device Mode* pane displays the operational mode the device is currently in, which also persists across the GUI tools and pages.

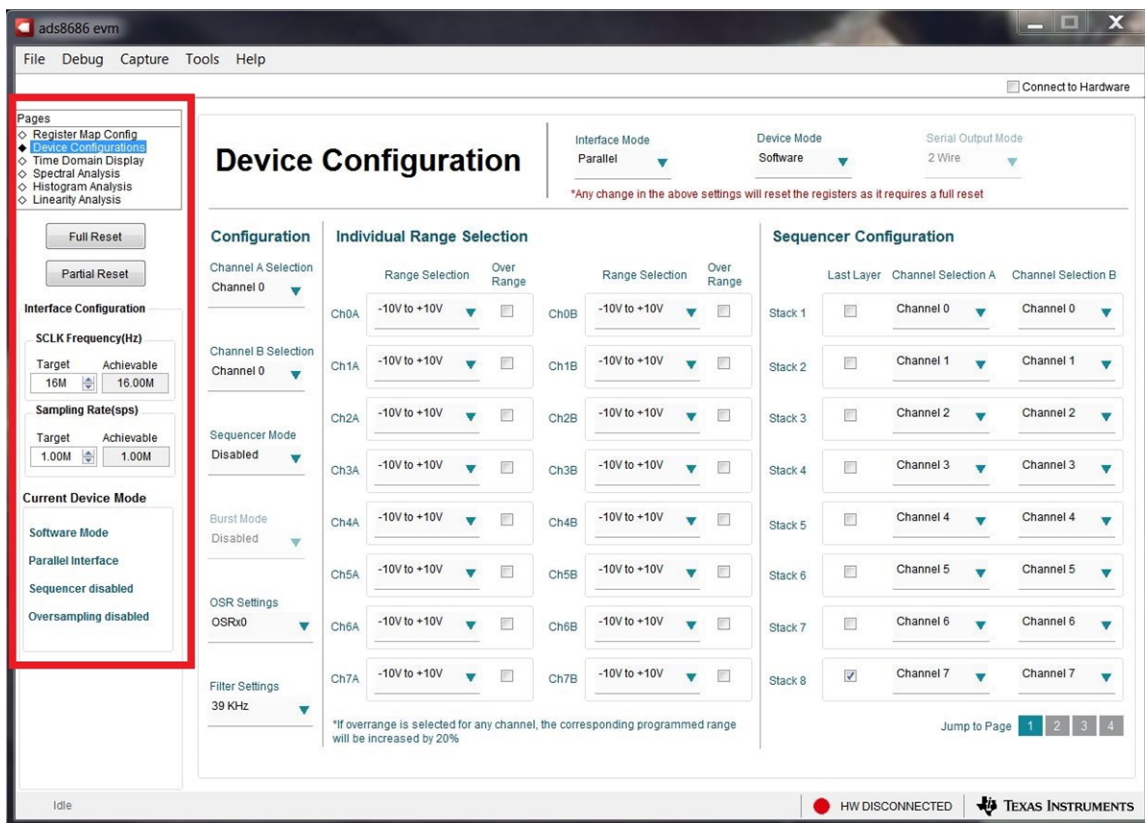


Figure 12. EVM GUI Global Input Parameters



## 6.2 Register Map Configurations

The *Register Map Config* page (Figure 13) provides access to the device register mapping. Within the page, the user registers listed can be easily changed through a drop down provided under the *Field View* on the right. When a register is selected, the options available are listed, when an option is selected, that option is reflected in the *Value* column. When a register configuration is made, that configuration persists through all GUI pages. See the device data sheet for more information on device registers.

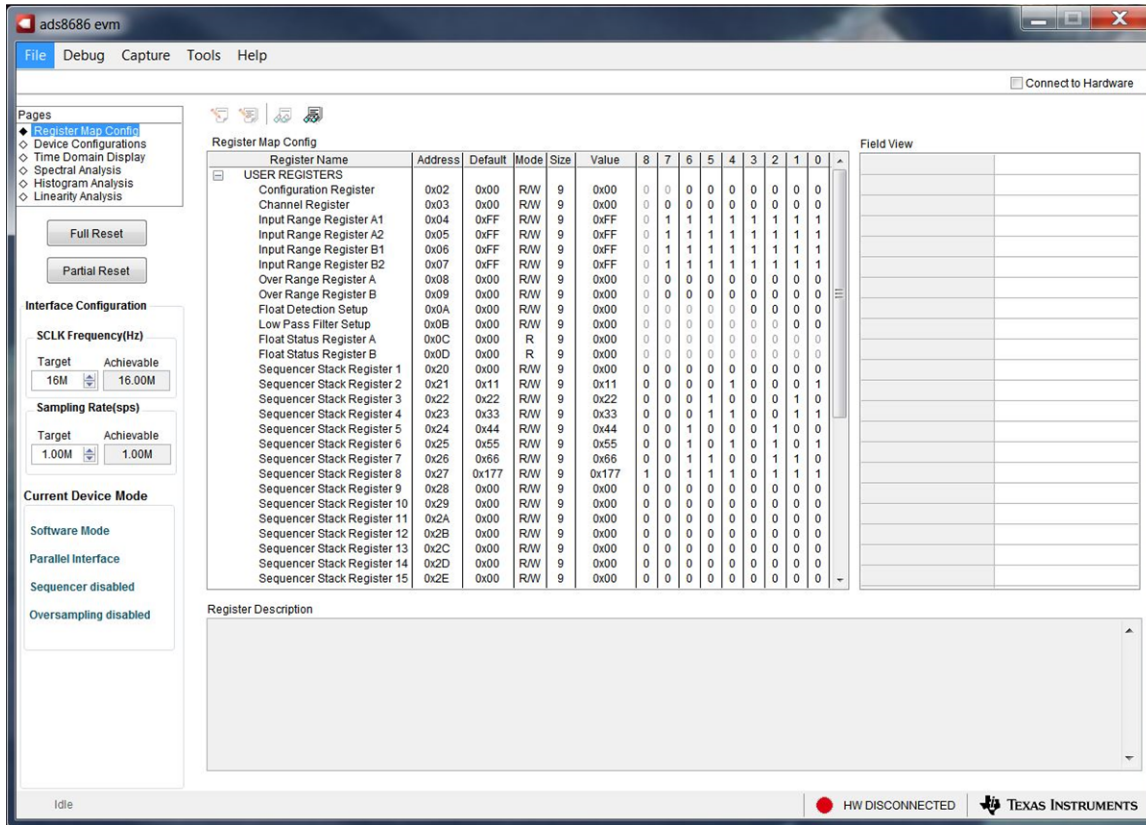


Figure 13. Register Map Configuration Display

## 6.3 Device Configuration

The device configuration page provides a user-friendly interface to the most common configuration options. When a setting is changed, that setting persists through all GUI pages and is also reflected in the *Current Device Mode* box if listed. When making a change that requires a reset pulse to the device, the GUI provides the pulse when the setting is changed; there is no need to press the *Full Reset* button.

At the top of the page are drop-down menu options for the *Interface Mode*, *Device Mode*, and *Serial Output Mode*. The *Interface Mode* field allows the choice of three interface options: serial, parallel, or parallel byte. Serial interface communication occurs through either single or dual serial output: DB12/SDOA and DB11/SDOB that can be selected in the *Serial Output Mode* field. Parallel interface communication occurs through the DB[15:0] parallel bus, parallel byte through the DB[7:0] parallel bus.

### 6.3.1 Software Mode

The page displays the setting options as shown in [Figure 14](#) when in software mode. The settings are displayed in three sections, *Configuration*, *Individual Range Selections*, and *Sequencer Configuration*.

In the left-most section, *Configuration*, channel selection options for each ADC is provided. In software mode the device allows the ADC channels sampled not to correspond with each other (for example, channel AIN\_0A can be sampled with channel AIN\_2B). The device also supports sequencer mode that can be enabled in this section. When this mode is disabled, the *Burst Mode* option is grayed out because burst mode is only available with the *Sequencer Mode* option enabled. To use burst mode, first enable *Sequencer Mode*, then enable *Burst Mode*. The ADS8686S supports an oversampling mode of operation using an on-chip averaging digital filter, as explained in the device data sheet. The oversampling ratio (OSR) settings drop-down menu in this section provides selectable oversampling ratios of 2x, 4x, 8x, 16x, 32x, 64x, and 128x. The *Filter Settings* drop down provides a drop-down field to select the cutoff frequency of the internal second-order, low-pass filter: 15 kHz, 39 kHz, or 300 kHz.

The middle section, *Individual Range Selection*, is used to select the input range of each input channel of the device:  $\pm 10$  V,  $\pm 5$  V, or  $\pm 2.5$  V. Each channel can also support an input range increase of 20% of the selected input range by checking the *Over Range* option. More information on the overrange setting is available in the device data sheet.

The right most section, *Sequencer Configuration*, provides a user-friendly interface to set the channel stack setting in sequencer mode. The device supports up to 32 stack options, navigating through the *Jump to Page* buttons displays these options. The stack length is selected by checking the *Last Layer* box of the final stack desired. Each stack can support non-corresponding input channels between ADC A and ADC B.

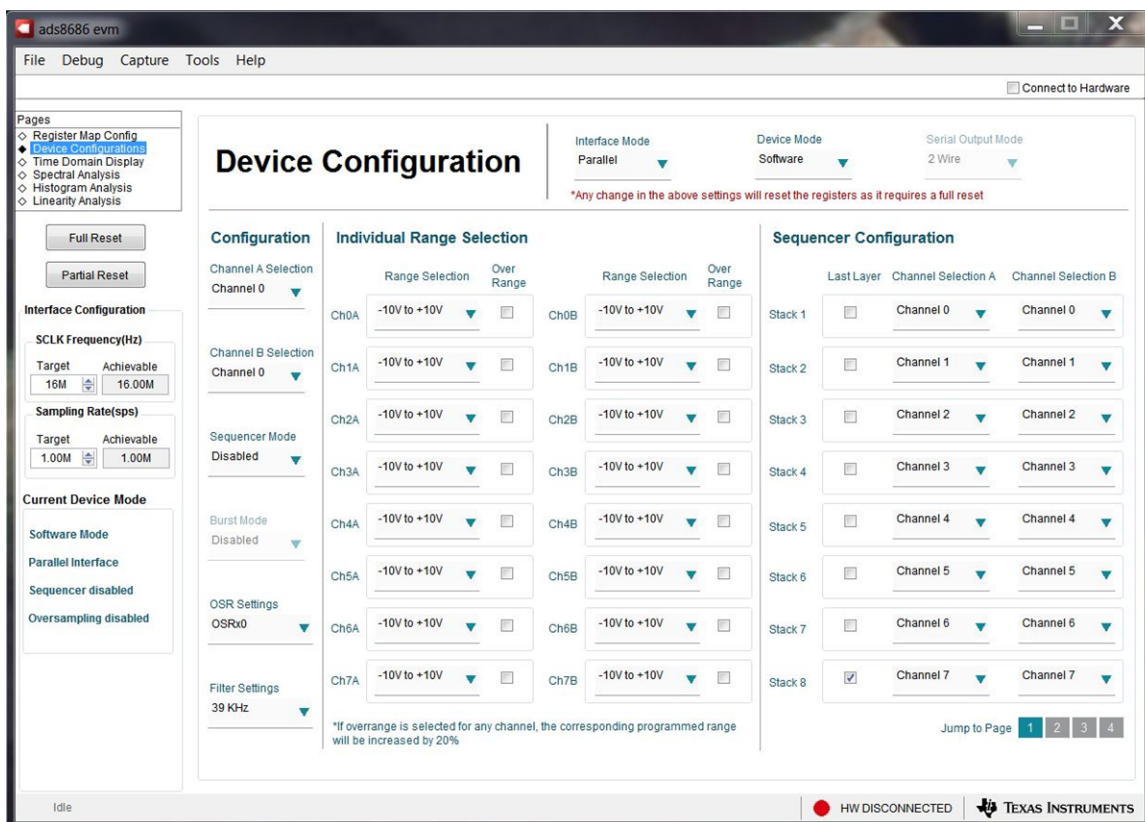


Figure 14. Device Configuration in Software Mode

### 6.3.2 Hardware Mode

When in hardware mode, [Figure 15](#) shows the setting options for the *Device Configuration* page. The device has limited configuration options in hardware mode, which are disabled in the GUI. The *Register Map Config* page is also not accessible in hardware mode.

In hardware mode, simultaneous sampling is restricted to the corresponding ADC A and ADC B channel, that is, channel AIN\_0A is always sampled with channel AIN\_0B. The diagnostic channels can not be sampled in the hardware mode of operation. All input channels are configured to the same input range in hardware mode. Sequencer mode is supported in hardware mode. When sequencer mode is disabled, the *Burst Mode* option is grayed out because burst mode is only available with sequencer mode enabled. The oversampling setting is also available in hardware mode, and can be selected using the drop-down field. The *Float Detection* option is displayed as a drop-down field in the *Device Configurations* page because the *Register Map Config* page is inaccessible in hardware mode.

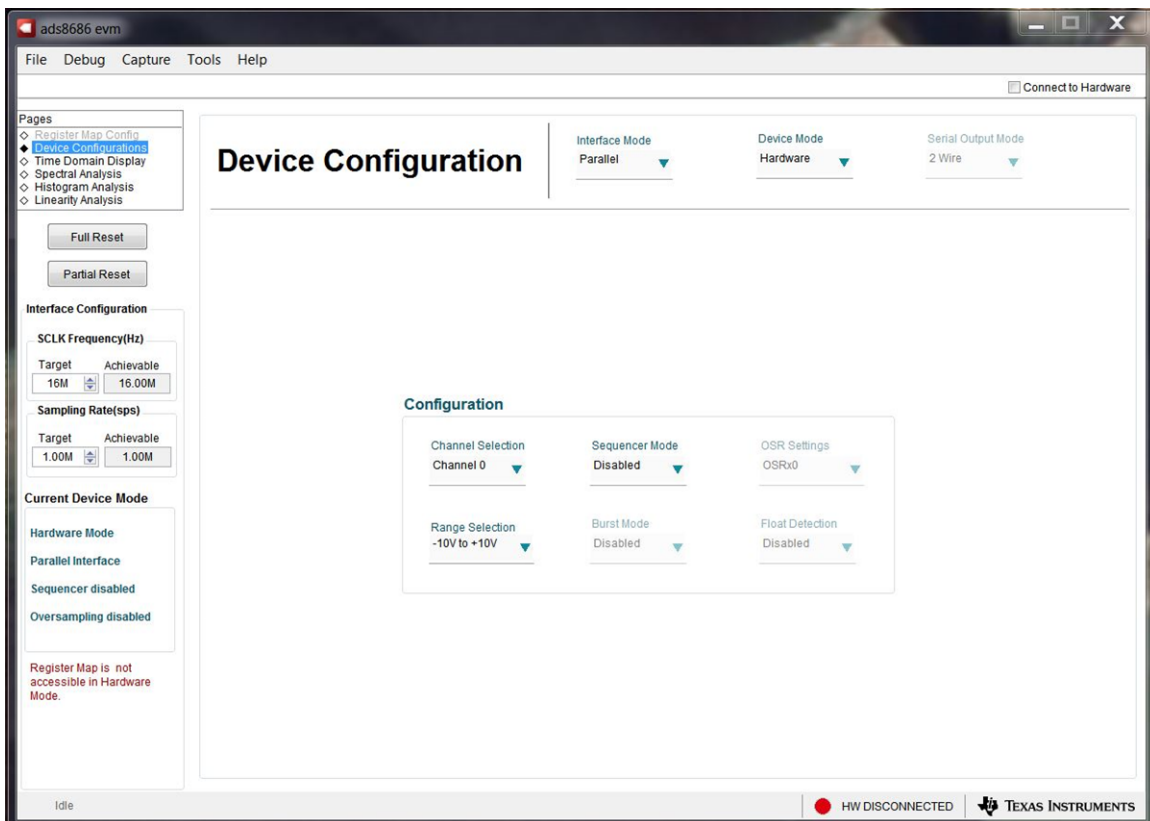


Figure 15. Device Configuration Display in Hardware Mode

### 6.4 Time Domain Display Tool

The *Time Domain Display* tool (Figure 16) allows visualization of the time domain conversion results given a set of analog input signals.

The GUI *Time Domain Display* shows two time domain voltage plots: the top time domain plot shows the conversion results ADC A and the bottom display shows conversion results for ADC B. The sample indices are on the x-axis and there are two y-axes showing the corresponding converted analog voltages. Any combination of desired channels can be selected using the *Analog CH AINx* selection buttons at the top-right side of the display.

When the *Capture* button is pressed, the software captures a contingent number of samples that are selected in the *Samples* field. In addition, the bottom-right side of the GUI provides information about the converted signals, such as the selected channel maximum and minimum code, maximum and minimum voltage, and the calculated RMS voltage value for the captured signal on each channel.

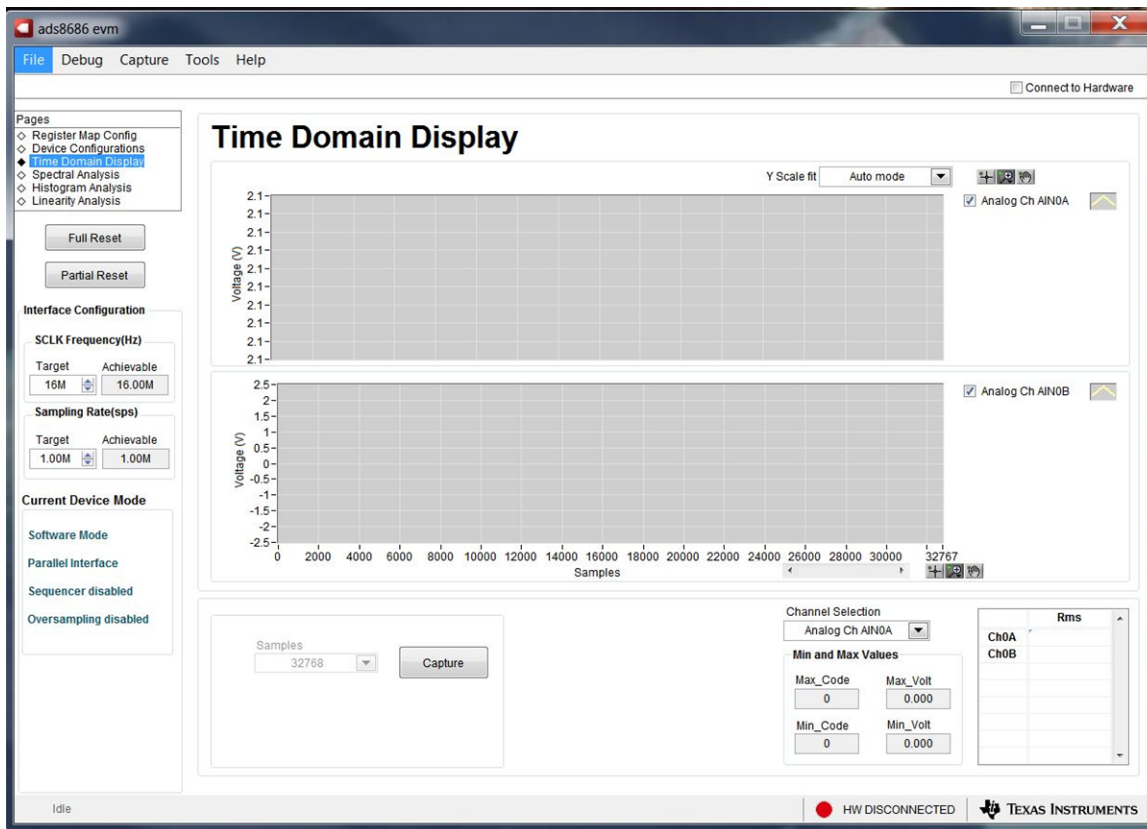


Figure 16. Time Domain Display

## 6.5 Spectral Analysis Tool

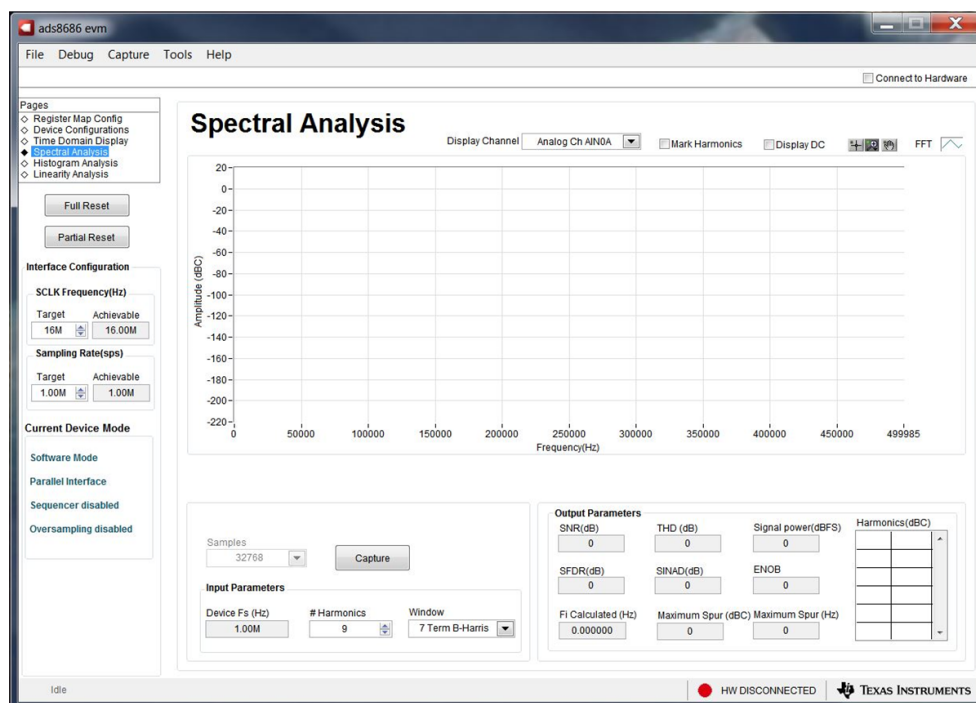
The spectral analysis tool is intended to evaluate the dynamic performance (SNR, THD, SFDR, SINAD, and ENOB) of the ADS8686S SAR ADC through a single-tone sinusoidal signal FFT analysis using the 7-term Blackman-Harris window setting.

For dynamic performance evaluation, the external differential source must have better specifications than the ADS8686S device in order to make sure that the measured system performance is not limited by the performance of the signal source. Therefore, the external reference source must meet the source requirements mentioned in [Table 6](#).

**Table 6. External Source Requirements for Evaluation of the ADS8686S**

Specification Description	Specification Value
Signal frequency	1 kHz (OSR = 0)
External source type	Single ended
External source common-mode	0 V
Maximum noise	35 $\mu$ V <sub>RMS</sub>
Maximum SNR	100 dB
Maximum THD	-110 dB

For 1-kHz SNR and ENOB evaluation at a maximum throughput of 200 kSPS, the optimal number of samples is 32768. More samples brings the noise floor so low that the external source phase noise can dominate the SNR and ENOB calculations. [Figure 17](#) shows the spectral analysis tool.



**Figure 17. Spectral Analysis Tool**

Finally, the FFT tool includes windowing options that are required to mitigate the effects of non-coherent sampling (a discussion that is beyond the scope of this document). The 7-Term Blackman Harris window is the default option and has sufficient dynamic range to resolve the frequency components of up to a 24-bit ADC. The *None* option corresponds to not using a window (or using a rectangular window), and is not recommended.

## 6.6 Histogram Analysis Tool

Noise degrades ADC resolution and the histogram tool can be used to estimate *effective resolution*, which is an indicator of the number of bits of ADC resolution losses resulting from noise generated by the various sources connected to the ADC when measuring a DC signal. The cumulative effect of noise coupling to the ADC output from sources such as the input drive circuits, the reference drive circuit, the ADC power supply, and the ADC, is reflected in the standard deviation of the ADC output code histogram that is obtained by performing multiple conversions of a dc input applied to a given channel.

As shown in Figure 18, the histogram corresponding to a dc input is displayed on clicking on the *Capture* button.

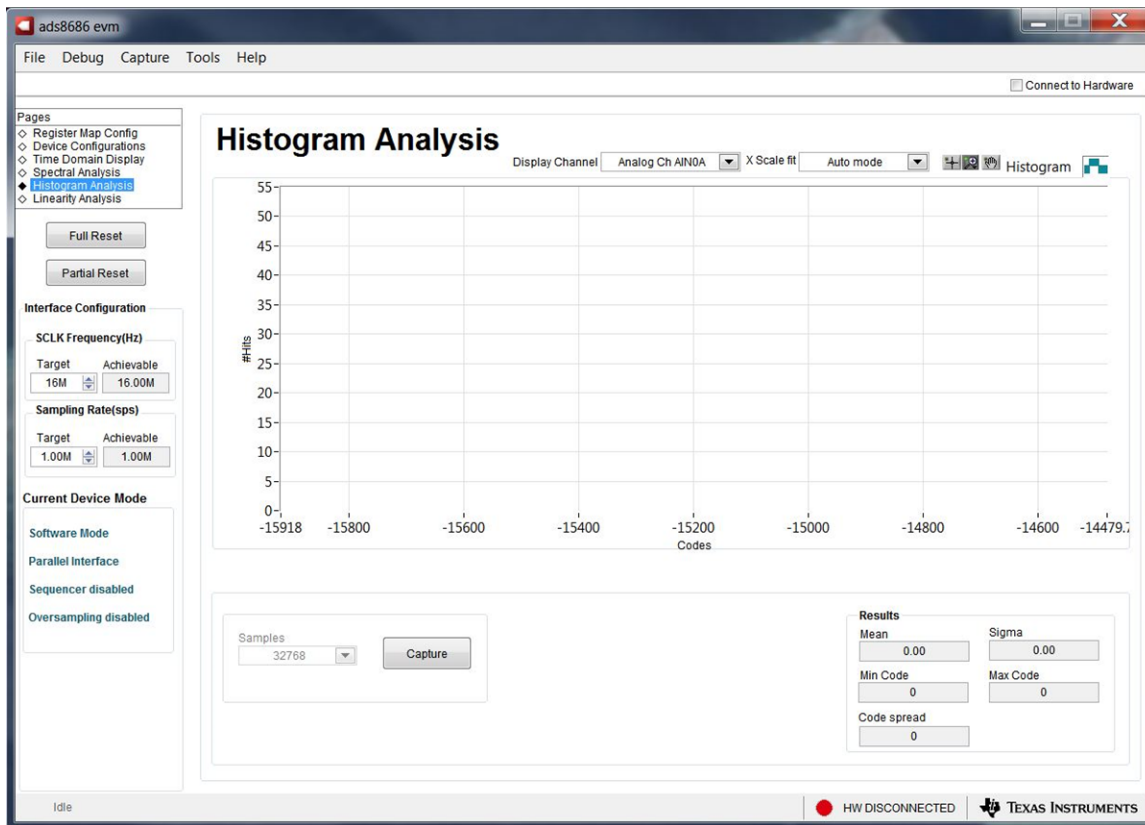


Figure 18. Histogram Analysis Tool

## 6.7 Linearity Analysis Tool

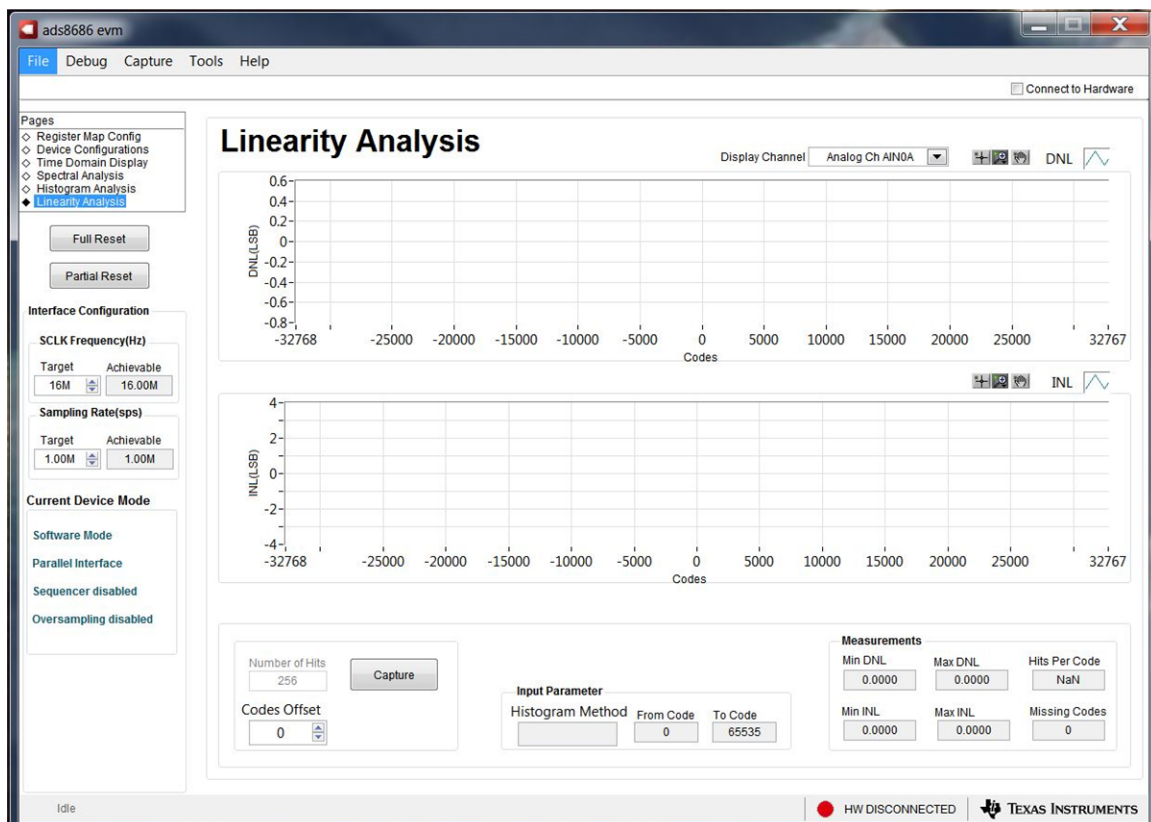
The linearity analysis tool measures and generates the performance DNL and INL plots over code for the ADS8686S. A 1-kHz sinusoidal input signal is required, which is slightly saturated (100 mV to 200 mV outside the full-scale range) at each input with very low distortion. The external source linearity must be better than the ADC linearity. The measured system performance must reflect the linearity errors of the ADC and must not be limited by the performance of the signal source. To make sure that the DNL and INL of the ADC are correctly measured, the requirements in [Table 7](#) must be met by the external source.

**Table 7. External Source Requirements for ADS8686S Evaluation**

Specification Description	Specification Value
Signal frequency	1 kHz
External source type	Single ended, referred to GND
External source common mode	0 V
Signal Amplitude	10.2 V <sub>p</sub> (TBD V <sub>pp</sub> ?) for ±10-V range; 5.1 V <sub>p</sub> (TBD V <sub>pp</sub> ?) for ±5-V range; 2.55 V <sub>p</sub> (TBD V <sub>pp</sub> ?) for ±2.5-V range;
Maximum noise	35 μV <sub>RMS</sub>
Maximum SNR	100 dB
Maximum THD	-110 dB

The *number-of-hits* setting depends on the external noise source. For a 100-dB SNR external source with approximately 30 μV<sub>rms</sub> of noise, the total number of hits must be 256. [Figure 19](#) shows the linearity analysis tool.

**NOTE:** This analysis can take a couple of minutes to run; therefore, the evaluation board must remain undisturbed during the complete duration of the analysis.



**Figure 19. Linearity Analysis Tool**

## 7 Bill of Materials, PCB Layout, and Schematics

This section contains the ADS8686S EVM [bill of materials \(BOM\)](#), [printed circuit board \(PCB\) layout](#), and the [EVM schematics](#).

### 7.1 Bill of Materials

[Table 8](#) lists the ADS8686SEVM BOM.

**Table 8. ADS8686S EVM Bill of Materials**

Manufacturer Part Number	Qty	Reference Designators	Manufacturer	Description
DC029	1	N/A	Any	Printed Circuit Board for Evaluation of ADS8686S
PHI-EVM-CONTROLLER (Edge# 6591636 rev. B)	1	N/A	Texas Instruments	USB Controller Board for ADC EVMs (Kit Item)
GRM188R60J106ME84	10	C1, C3, C5, C7, C9, C11, C15, C17, C18, C21	MuRata	CAP, CERM, 10 uF, 6.3 V, +/- 20%, X5R, 0603
550L104KCAT	14	C2, C4, C6, C8, C10, C12, C16, C44, C45, C46, C47, C48, C50, C51	AT Ceramics	CAP, CERM, 0.1 uF, 16 V, +/- 10%, 0402
C0805C104K4RACTU	1	C13	Kemet	CAP, CERM, 0.1 uF, 16 V, +/- 10%, X7R, 0805
C0805C106K8PACTU	3	C14, C26, C43	Kemet	CAP, CERM, 10 uF, 10 V, +/- 10%, X5R, 0805
GRM31CR61A226ME19L	1	C19	MuRata	CAP, CERM, 22 uF, 10 V, +/- 20%, X5R, 1206
GRM188R71E105KA12D	5	C23, C24, C25, C49, C52	MuRata	CAP, CERM, 1 uF, 25 V, +/- 10%, X7R, 0603
GRM1885C1H102FA01J	16	C27, C28, C29, C30, C31, C32, C33, C34, C35, C36, C37, C38, C39, C40, C41, C42	MuRata	CAP, CERM, 1000 pF, 50 V, +/- 1%, C0G/NP0, 0603
PMSSS 440 0025 PH	4	H1, H2, H3, H4	B&F Fastener Supply	Machine Screw Pan PHILLIPS 4-40
1891	4	H5, H6, H7, H8	Keystone	Hex Standoff, #4-40, Aluminum, 1/4"
9774050360R	2	H9, H10	Wurth Elektronik	ROUND STANDOFF M3 STEEL 5MM
RM3X4MM 2701	2	H11, H12	APM HEXSEAL	Machine Screw Pan PHILLIPS M3
1803633	4	H13, H14, H15, H16	Phoenix Contact	Terminal Block Plug, 8 Pos, 3.81mm
5-1814832-1	4	J1, J2, J9, J10	TE Connectivity	SMA Straight PCB Socket Die Cast, 50 Ohm, TH
QTH-030-01-L-D-A	1	J17	Samtec	Header(Shrouded), 19.7mil, 30x2, Gold, SMT
TSW-116-07-G-D	1	J18	Samtec	Header, 100mil, 16x2, Gold, TH
PBC03SAAN	6	JP1, JP2, JP3, JP4, JP5, JP7	Sullins Connector Solutions	Header, 100mil, 3x1, Gold, TH
5-146261-1	3	JP6, JP8, JP9	TE Connectivity	Header, 100mil, 2x1, Gold, TH
CRCW040210K0FKED	5	R2, R27, R122, R126, R132	Vishay-Dale	RES, 10.0 k, 1%, 0.063 W, 0402
CRCW0402100KFKED	19	R5, R6, R7, R8, R9, R10, R11, R12, R17, R18, R19, R20, R21, R22, R23, R24, R25, R26, R124	Vishay-Dale	RES, 100 k, 1%, 0.063 W, 0402



**Table 8. ADS8686S EVM Bill of Materials (continued)**

Manufacturer Part Number	Qty	Reference Designators	Manufacturer	Description
CRCW12060000Z0EA	17	R28, R34, R36, R44, R46, R54, R56, R64, R66, R74, R76, R84, R86, R94, R96, R104, R106	Vishay-Dale	RES, 0, 5%, 0.25 W, 1206
RT0603BRD0710KL	1	R31	Yageo America	RES, 10.0 k, 0.1%, 0.1 W, 0603
ERJ-3RQFR22V	1	R32	Panasonic	RES, 0.22, 1%, 0.1 W, 0603
CRCW04022K70JNED	2	R33, R125	Vishay-Dale	RES, 2.7 k, 5%, 0.063 W, 0402
RG1608P-102-B-T5	32	R35, R37, R40, R41, R45, R47, R50, R51, R55, R57, R60, R61, R65, R67, R70, R71, R75, R77, R80, R81, R85, R87, R90, R91, R95, R97, R100, R101, R105, R107, R110, R111	Susumu Co Ltd	RES, 1.00 k, 0.1%, 0.1 W, 0603
CRCW06030000Z0EA	18	R42, R43, R52, R53, R62, R63, R72, R73, R82, R83, R92, R93, R102, R103, R112, R113, R130, R133	Vishay-Dale	RES, 0, 5%, 0.1 W, 0603
CRCW040249R9FKED	9	R114, R115, R116, R117, R118, R119, R120, R121, R123	Vishay-Dale	RES, 49.9, 1%, 0.063 W, 0402
RC0402JR-070RL	1	R127	Yageo America	RES, 0, 5%, 0.063 W, 0402
EVQPNF04M	1	S1	Panasonic	Switch, Tactile, SPST-NO, 0.05A, 12V, SMD
382811-6	7	SH-J1, SH-J2, SH-J3, SH-J4, SH-J5, SH-J6, SH-J7	AMP	Shunt, 100mil, Gold plated, Black
ED555/4DS	1	T1	On-Shore Technology	Terminal Block, 3.5mm Pitch, 4x1, TH
1803332	4	T2, T3, T4, T5	Phoenix Contact	Header(shrouded), 3.81mm, 8x1, Tin, R/A, TH
ED555/3DS	1	T6	On-Shore Technology	Terminal Block, 3.5mm Pitch, 3x1, TH
5001	2	TP1, TP2	Keystone	Test Point, Miniature, Black, TH
5002	3	TP3, TP4, TP5	Keystone	Test Point, Miniature, White, TH
ADS8686-PZA	1	U1	Texas Instruments	16-Channel DAS with 16-Bit, Bipolar Input, Dual Simultaneous Sampling ADC, PZA0080A (LQFP-80)
TPS7A4700RGWR	1	U3	Texas Instruments	36-V, 1-A, 4.17-uVRMS, RF LDO Voltage Regulator, RGW0020A (VQFN-20)
REF5025AIDGKT	1	U4	Texas Instruments	Low Noise, Very Low Drift, Precision Voltage Reference, -40 to 125 degC, 8-pin MSOP(DGK), Green (RoHS & no Sb/Br)
BR24G32FVT-3AGE2	1	U5	Rohm	I2C BUS EEPROM (2-Wire), TSSOP-B8
OPA192IDBVT	1	U6	Texas Instruments	Precision, Rail-to-Rail Input/Output, Low Offset Voltage, Low Input Bias Current Op Amp with E-trim, 4.5 to 36 V, -40 to 125 degC, 8-Pin SOT-23 (DBV), Green (RoHS & no Sb/Br), Tape and Reel
INA149AID	1	U7	Texas Instruments	High Common Mode Voltage Difference Amplifier, -40 to 125 degC, 8-pin SOIC (D8), Green (RoHS & no Sb/Br)
GRM188R60J106ME84	0	C20, C22	MuRata	CAP, CERM, 10 uF, 6.3 V, +/- 20%, X5R, 0603
SMBJ14CA	0	D4, D5, D6, D7, D8, D9, D10, D11, D12, D13, D14, D15, D16, D17, D18, D19	Littelfuse	Diode, TVS, Bi, 14 V, SMB

**Table 8. ADS8686S EVM Bill of Materials (continued)**

Manufacturer Part Number	Qty	Reference Designators	Manufacturer	Description
5-1814832-1	0	J3, J4, J5, J6, J7, J8, J11, J12, J13, J14, J15, J16	TE Connectivity	SMA Straight PCB Socket Die Cast, 50 Ohm, TH
1269AS-H-4R7M=P2	0	L1	MuRata Toko	Inductor, Shielded, Metal Composite, 4.7 uH, 1.2 A, 0.25 ohm, SMD
CRCW040210K0FKED	0	R1	Vishay-Dale	RES, 10.0 k, 1%, 0.063 W, 0402
CRCW0402100KFKED	0	R3, R4, R13, R14, R15, R16, R30, R129	Vishay-Dale	RES, 100 k, 1%, 0.063 W, 0402
CRCW04021M00JNED	0	R29	Vishay-Dale	RES, 0, 5%, 0.1 W, 0603
CRCW06030000Z0EA	0	R38, R39, R48, R49, R58, R59, R68, R69, R78, R79, R88, R89, R98, R99, R108, R109, R131, R134, R135	Vishay-Dale	RES, 0, 5%, 0.1 W, 0603
RC0402JR-070RL	0	R128	Yageo America	RES, 0, 5%, 0.063 W, 0402
TPS61220DCKR	0	U2	Texas Instruments	Low Input Voltage, 0.7V Boost Converter with 5.5uA Quiescent Current, DCK0006A (SOT-SC70-6)

## 7.2 PCB Layout

Figure 21 through Figure 25 illustrate the EVM PCB layout.

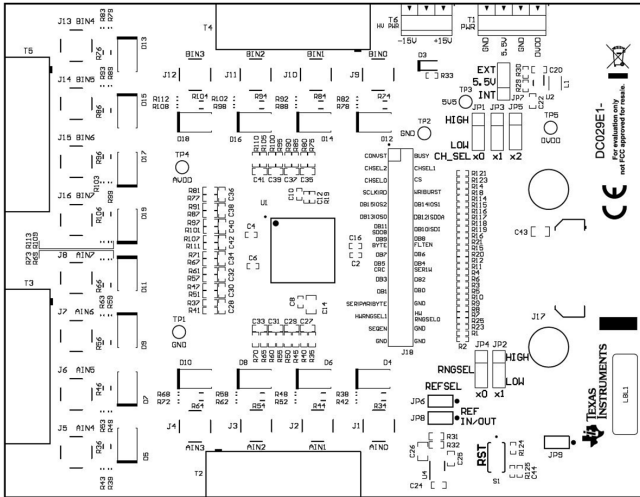


Figure 20. ADS8686S EVM PCB: Top Overlay

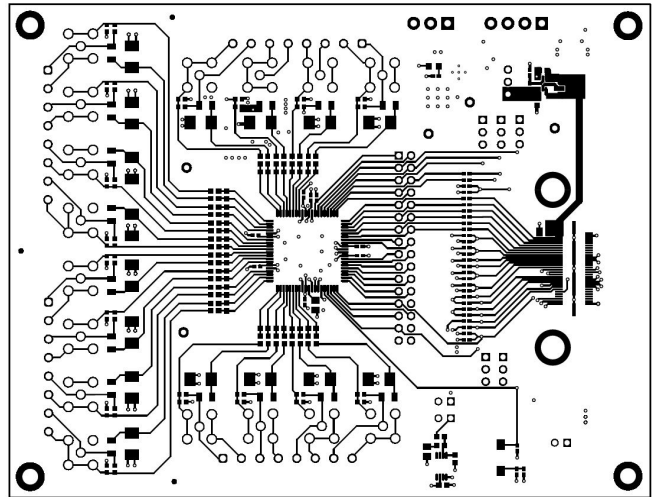


Figure 21. ADS8686S EVM PCB Layer 1: Top Layer

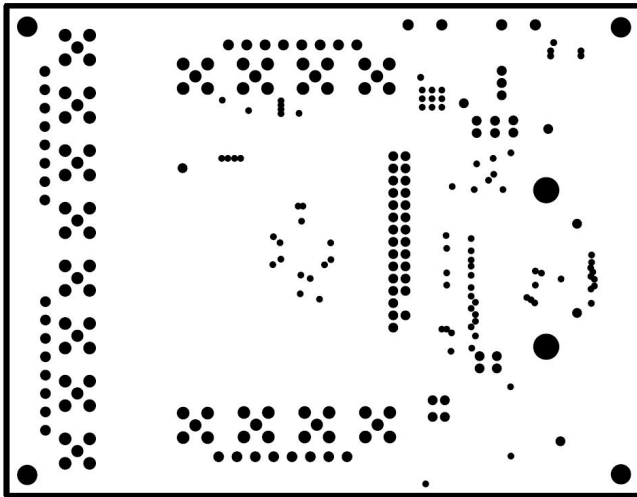


Figure 22. ADS8686S EVM PCB Layer 2: GND Plane

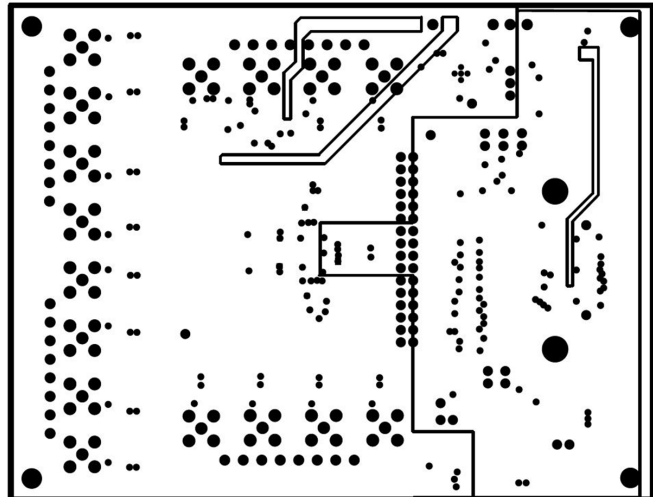


Figure 23. ADS8686S EVM PCB Layer 3: Power Planes

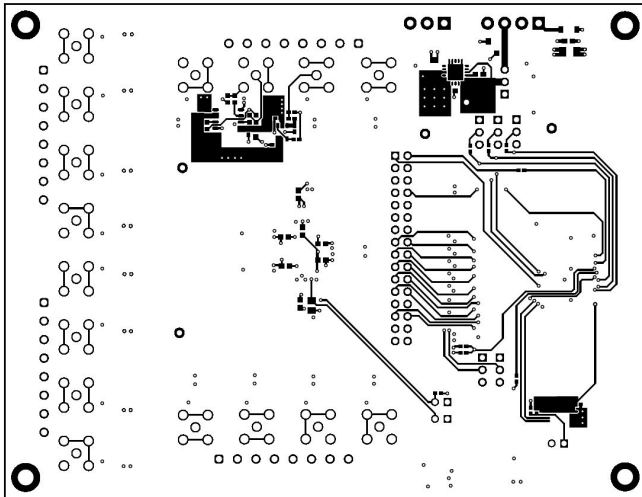


Figure 24. ADS8686S EVM PCB Layer 4: Bottom Layer

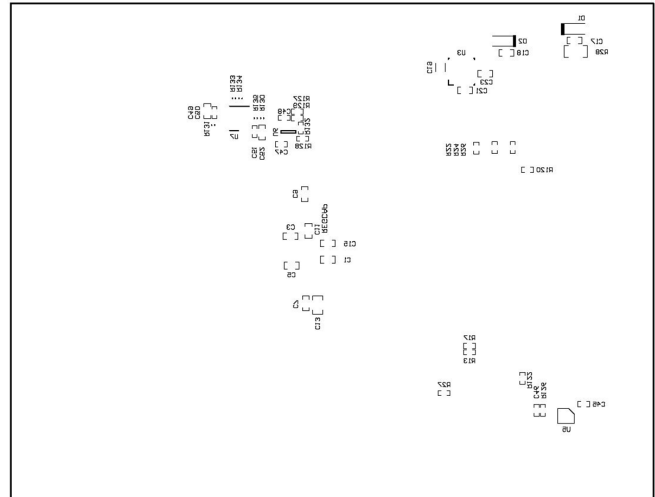


Figure 25. ADS8686S EVM PCB: Bottom Overlay

### 7.3 Schematics

Figure 26 through Figure 26 illustrate the EVM schematics.

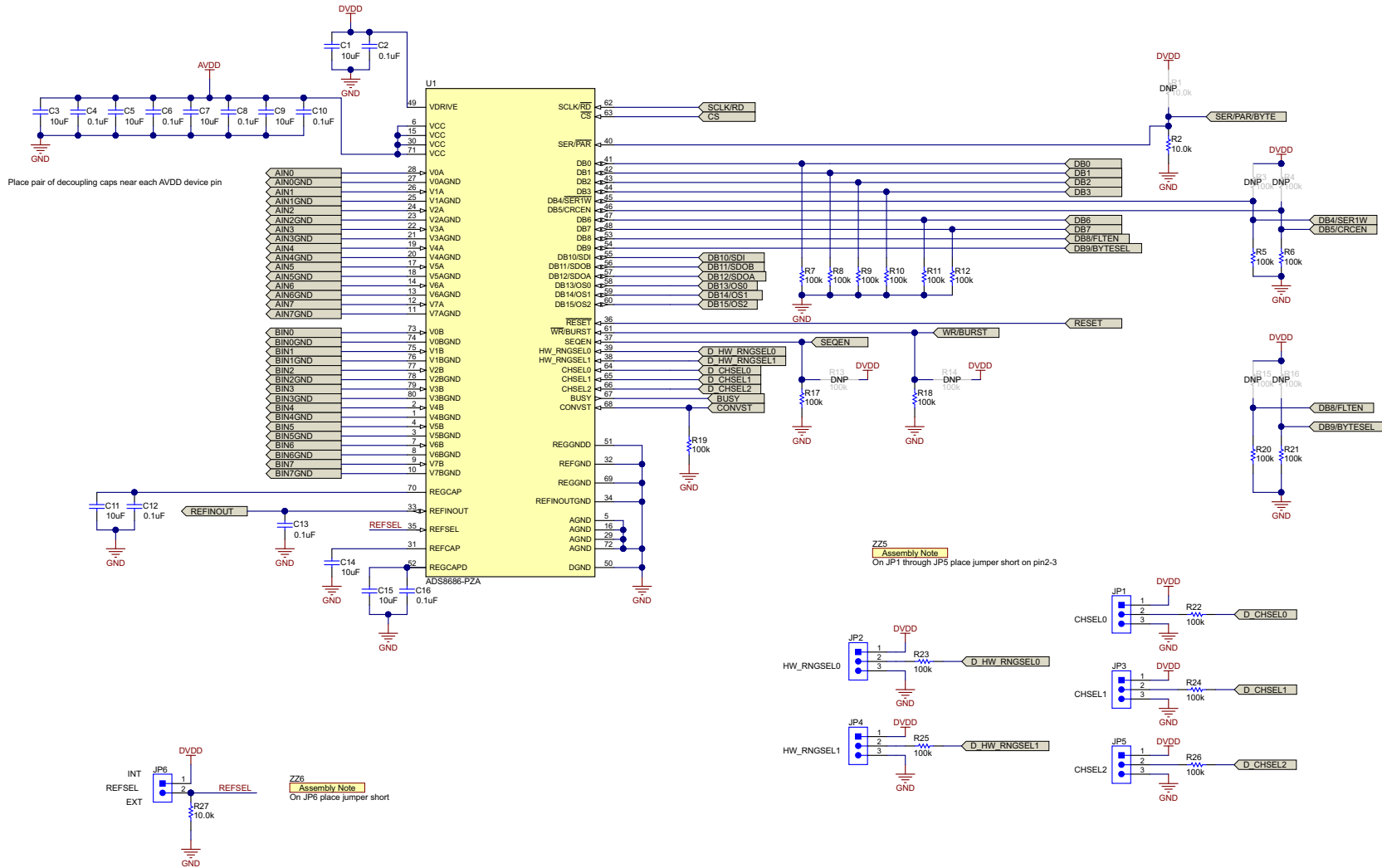


Figure 26. ADS8686SEVM-PDK Schematic

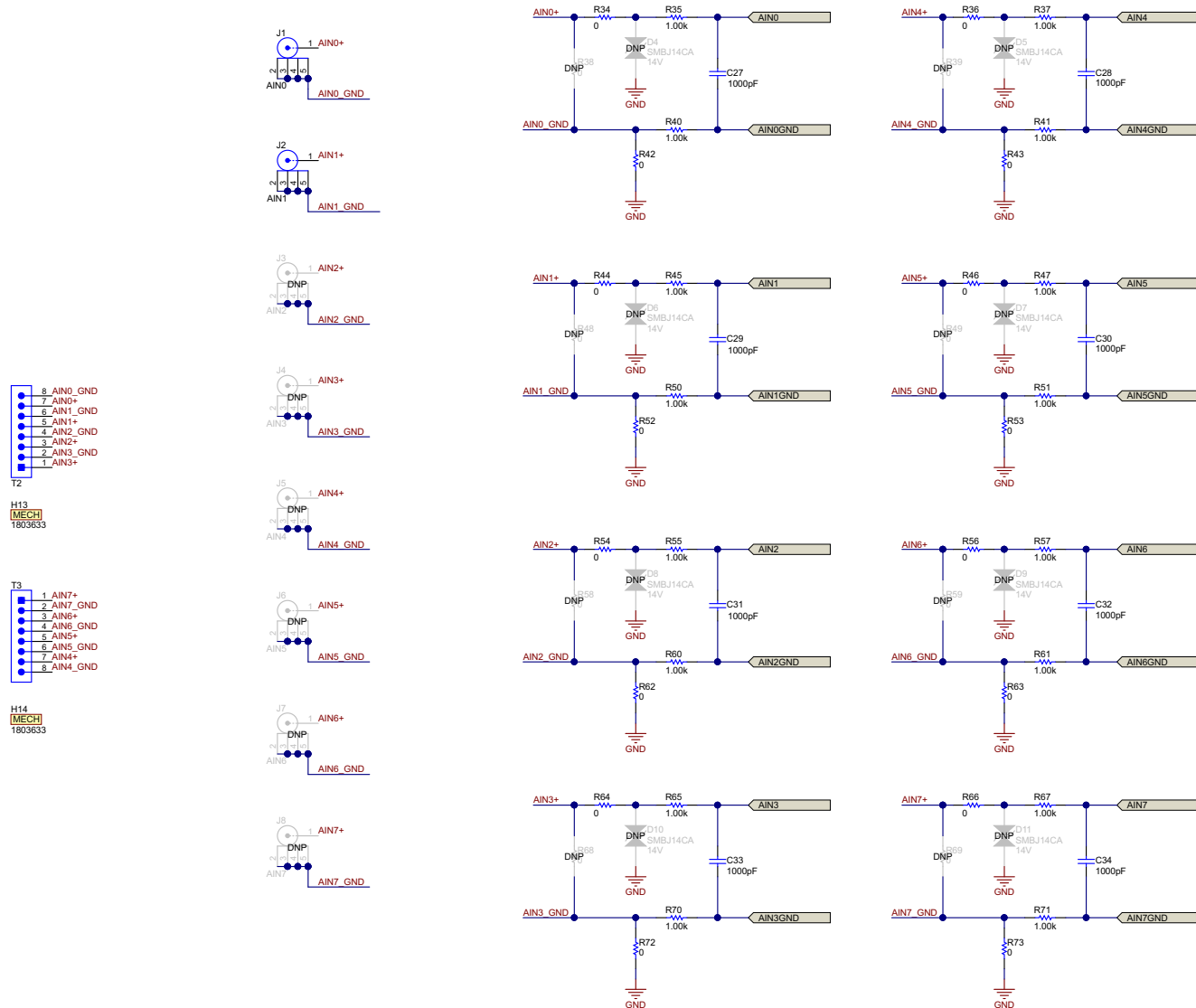


Figure 27. ADS8686SEVM-PDK Schematic

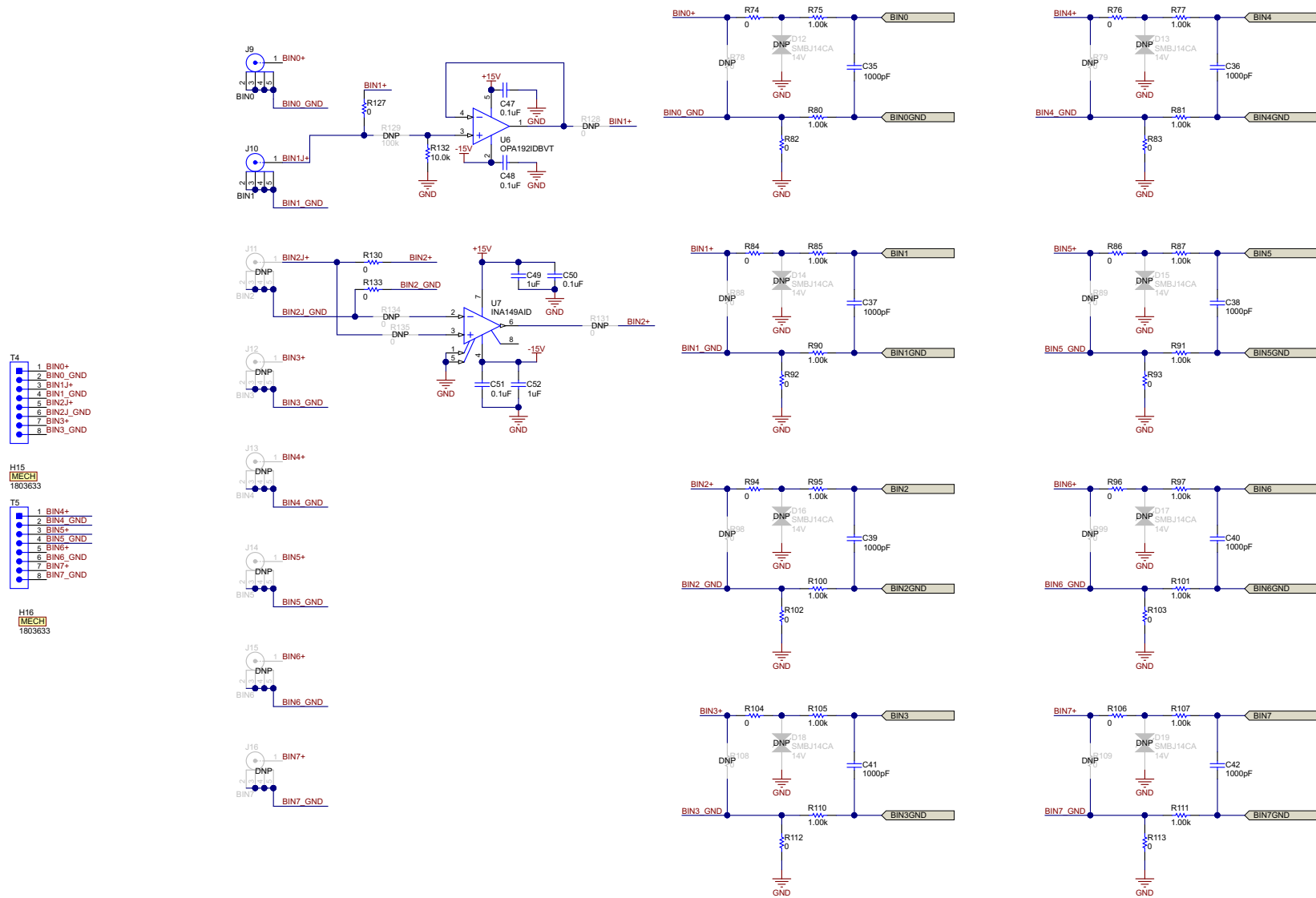
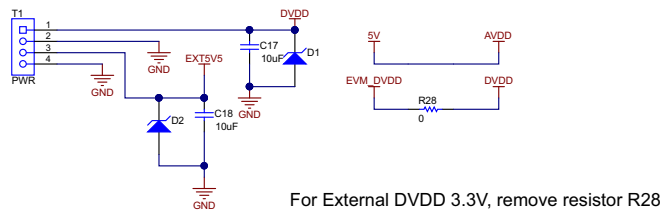
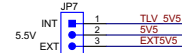


Figure 28. ADS8686SEVM-PDK Schematic



Power for 5.5V to AVDD



**ZZ1**  
**Assembly Note**  
 on JP7 place jumper short on pin 2-3

External Power - High Voltage

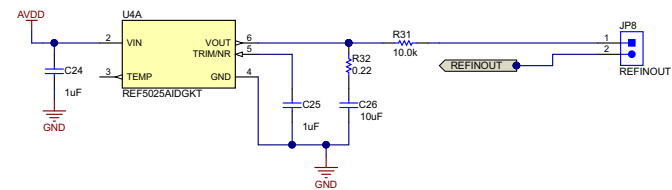
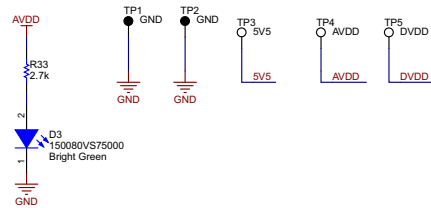
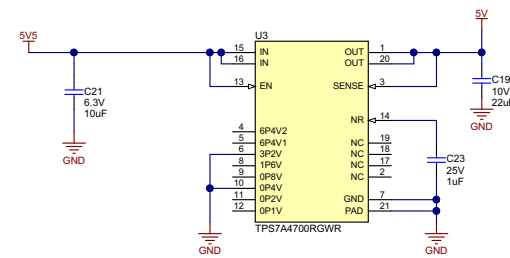
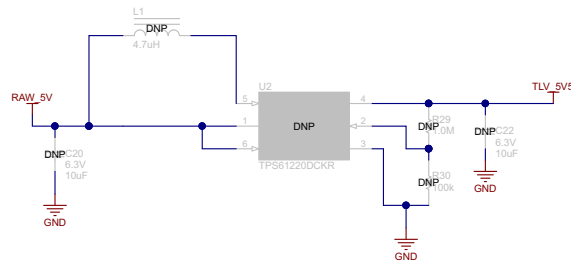
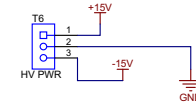


Figure 29. ADS8686SEVM-PDK Schematic



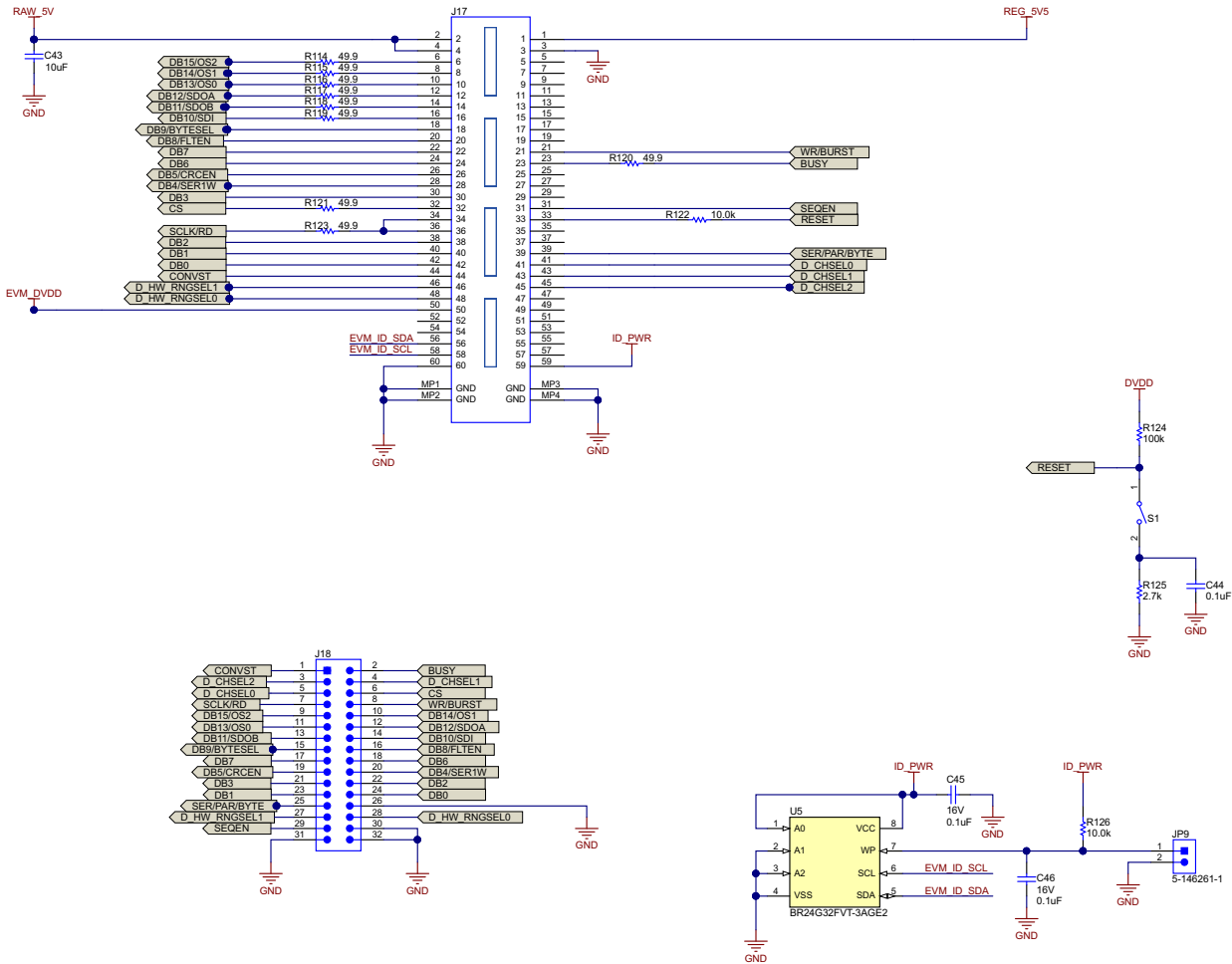


Figure 30. ADS8686SEVM-PDK Schematic

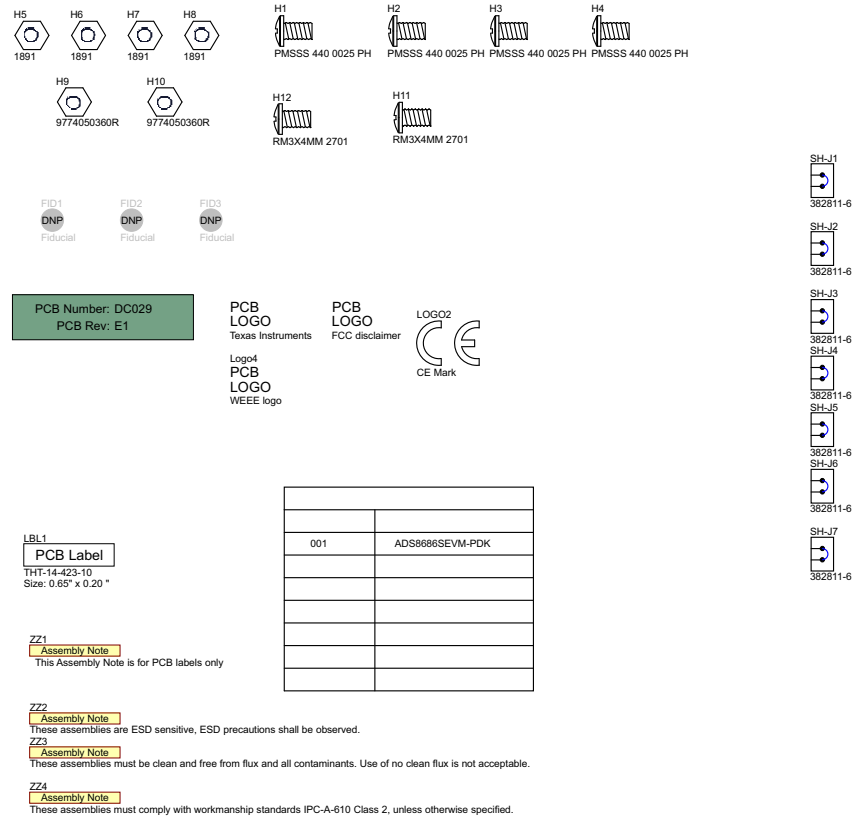


Figure 31. ADS8686SEVM-PDK Schematic

## STANDARD TERMS FOR EVALUATION MODULES

1. *Delivery:* TI delivers TI evaluation boards, kits, or modules, including any accompanying demonstration software, components, and/or documentation which may be provided together or separately (collectively, an "EVM" or "EVMs") to the User ("User") in accordance with the terms set forth herein. User's acceptance of the EVM is expressly subject to the following terms.
  - 1.1 EVMs are intended solely for product or software developers for use in a research and development setting to facilitate feasibility evaluation, experimentation, or scientific analysis of TI semiconductor products. EVMs have no direct function and are not finished products. EVMs shall not be directly or indirectly assembled as a part or subassembly in any finished product. For clarification, any software or software tools provided with the EVM ("Software") shall not be subject to the terms and conditions set forth herein but rather shall be subject to the applicable terms that accompany such Software
  - 1.2 EVMs are not intended for consumer or household use. EVMs may not be sold, sublicensed, leased, rented, loaned, assigned, or otherwise distributed for commercial purposes by Users, in whole or in part, or used in any finished product or production system.
2. *Limited Warranty and Related Remedies/Disclaimers:*
  - 2.1 These terms do not apply to Software. The warranty, if any, for Software is covered in the applicable Software License Agreement.
  - 2.2 TI warrants that the TI EVM will conform to TI's published specifications for ninety (90) days after the date TI delivers such EVM to User. Notwithstanding the foregoing, TI shall not be liable for a nonconforming EVM if (a) the nonconformity was caused by neglect, misuse or mistreatment by an entity other than TI, including improper installation or testing, or for any EVMs that have been altered or modified in any way by an entity other than TI, (b) the nonconformity resulted from User's design, specifications or instructions for such EVMs or improper system design, or (c) User has not paid on time. Testing and other quality control techniques are used to the extent TI deems necessary. TI does not test all parameters of each EVM. User's claims against TI under this Section 2 are void if User fails to notify TI of any apparent defects in the EVMs within ten (10) business days after delivery, or of any hidden defects with ten (10) business days after the defect has been detected.
  - 2.3 TI's sole liability shall be at its option to repair or replace EVMs that fail to conform to the warranty set forth above, or credit User's account for such EVM. TI's liability under this warranty shall be limited to EVMs that are returned during the warranty period to the address designated by TI and that are determined by TI not to conform to such warranty. If TI elects to repair or replace such EVM, TI shall have a reasonable time to repair such EVM or provide replacements. Repaired EVMs shall be warranted for the remainder of the original warranty period. Replaced EVMs shall be warranted for a new full ninety (90) day warranty period.

### **WARNING**

**Evaluation Kits are intended solely for use by technically qualified, professional electronics experts who are familiar with the dangers and application risks associated with handling electrical mechanical components, systems, and subsystems.**

**User shall operate the Evaluation Kit within TI's recommended guidelines and any applicable legal or environmental requirements as well as reasonable and customary safeguards. Failure to set up and/or operate the Evaluation Kit within TI's recommended guidelines may result in personal injury or death or property damage. Proper set up entails following TI's instructions for electrical ratings of interface circuits such as input, output and electrical loads.**

**NOTE:**

**EXPOSURE TO ELECTROSTATIC DISCHARGE (ESD) MAY CAUSE DEGRADATION OR FAILURE OF THE EVALUATION KIT; TI RECOMMENDS STORAGE OF THE EVALUATION KIT IN A PROTECTIVE ESD BAG.**

### 3 Regulatory Notices:

#### 3.1 United States

##### 3.1.1 Notice applicable to EVMs not FCC-Approved:

**FCC NOTICE:** This kit is designed to allow product developers to evaluate electronic components, circuitry, or software associated with the kit to determine whether to incorporate such items in a finished product and software developers to write software applications for use with the end product. This kit is not a finished product and when assembled may not be resold or otherwise marketed unless all required FCC equipment authorizations are first obtained. Operation is subject to the condition that this product not cause harmful interference to licensed radio stations and that this product accept harmful interference. Unless the assembled kit is designed to operate under part 15, part 18 or part 95 of this chapter, the operator of the kit must operate under the authority of an FCC license holder or must secure an experimental authorization under part 5 of this chapter.

##### 3.1.2 For EVMs annotated as FCC – FEDERAL COMMUNICATIONS COMMISSION Part 15 Compliant:

#### **CAUTION**

This device complies with part 15 of the FCC Rules. Operation is subject to the following two conditions: (1) This device may not cause harmful interference, and (2) this device must accept any interference received, including interference that may cause undesired operation.

Changes or modifications not expressly approved by the party responsible for compliance could void the user's authority to operate the equipment.

#### **FCC Interference Statement for Class A EVM devices**

*NOTE: This equipment has been tested and found to comply with the limits for a Class A digital device, pursuant to part 15 of the FCC Rules. These limits are designed to provide reasonable protection against harmful interference when the equipment is operated in a commercial environment. This equipment generates, uses, and can radiate radio frequency energy and, if not installed and used in accordance with the instruction manual, may cause harmful interference to radio communications. Operation of this equipment in a residential area is likely to cause harmful interference in which case the user will be required to correct the interference at his own expense.*

#### **FCC Interference Statement for Class B EVM devices**

*NOTE: This equipment has been tested and found to comply with the limits for a Class B digital device, pursuant to part 15 of the FCC Rules. These limits are designed to provide reasonable protection against harmful interference in a residential installation. This equipment generates, uses and can radiate radio frequency energy and, if not installed and used in accordance with the instructions, may cause harmful interference to radio communications. However, there is no guarantee that interference will not occur in a particular installation. If this equipment does cause harmful interference to radio or television reception, which can be determined by turning the equipment off and on, the user is encouraged to try to correct the interference by one or more of the following measures:*

- Reorient or relocate the receiving antenna.
- Increase the separation between the equipment and receiver.
- Connect the equipment into an outlet on a circuit different from that to which the receiver is connected.
- Consult the dealer or an experienced radio/TV technician for help.

#### 3.2 Canada

##### 3.2.1 For EVMs issued with an Industry Canada Certificate of Conformance to RSS-210 or RSS-247

#### **Concerning EVMs Including Radio Transmitters:**

This device complies with Industry Canada license-exempt RSSs. Operation is subject to the following two conditions:

(1) this device may not cause interference, and (2) this device must accept any interference, including interference that may cause undesired operation of the device.

#### **Concernant les EVMs avec appareils radio:**

Le présent appareil est conforme aux CNR d'Industrie Canada applicables aux appareils radio exempts de licence. L'exploitation est autorisée aux deux conditions suivantes: (1) l'appareil ne doit pas produire de brouillage, et (2) l'utilisateur de l'appareil doit accepter tout brouillage radioélectrique subi, même si le brouillage est susceptible d'en compromettre le fonctionnement.

#### **Concerning EVMs Including Detachable Antennas:**

Under Industry Canada regulations, this radio transmitter may only operate using an antenna of a type and maximum (or lesser) gain approved for the transmitter by Industry Canada. To reduce potential radio interference to other users, the antenna type and its gain should be so chosen that the equivalent isotropically radiated power (e.i.r.p.) is not more than that necessary for successful communication. This radio transmitter has been approved by Industry Canada to operate with the antenna types listed in the user guide with the maximum permissible gain and required antenna impedance for each antenna type indicated. Antenna types not included in this list, having a gain greater than the maximum gain indicated for that type, are strictly prohibited for use with this device.

### Concernant les EVMs avec antennes détachables

Conformément à la réglementation d'Industrie Canada, le présent émetteur radio peut fonctionner avec une antenne d'un type et d'un gain maximal (ou inférieur) approuvé pour l'émetteur par Industrie Canada. Dans le but de réduire les risques de brouillage radioélectrique à l'intention des autres utilisateurs, il faut choisir le type d'antenne et son gain de sorte que la puissance isotrope rayonnée équivalente (p.i.r.e.) ne dépasse pas l'intensité nécessaire à l'établissement d'une communication satisfaisante. Le présent émetteur radio a été approuvé par Industrie Canada pour fonctionner avec les types d'antenne énumérés dans le manuel d'usage et ayant un gain admissible maximal et l'impédance requise pour chaque type d'antenne. Les types d'antenne non inclus dans cette liste, ou dont le gain est supérieur au gain maximal indiqué, sont strictement interdits pour l'exploitation de l'émetteur.

#### 3.3 Japan

3.3.1 *Notice for EVMs delivered in Japan:* Please see [http://www.tij.co.jp/lstds/ti\\_ja/general/eStore/notice\\_01.page](http://www.tij.co.jp/lstds/ti_ja/general/eStore/notice_01.page) 日本国内に輸入される評価用キット、ボードについては、次のところをご覧ください。  
[http://www.tij.co.jp/lstds/ti\\_ja/general/eStore/notice\\_01.page](http://www.tij.co.jp/lstds/ti_ja/general/eStore/notice_01.page)

3.3.2 *Notice for Users of EVMs Considered "Radio Frequency Products" in Japan:* EVMs entering Japan may not be certified by TI as conforming to Technical Regulations of Radio Law of Japan.

If User uses EVMs in Japan, not certified to Technical Regulations of Radio Law of Japan, User is required to follow the instructions set forth by Radio Law of Japan, which includes, but is not limited to, the instructions below with respect to EVMs (which for the avoidance of doubt are stated strictly for convenience and should be verified by User):

1. Use EVMs in a shielded room or any other test facility as defined in the notification #173 issued by Ministry of Internal Affairs and Communications on March 28, 2006, based on Sub-section 1.1 of Article 6 of the Ministry's Rule for Enforcement of Radio Law of Japan,
2. Use EVMs only after User obtains the license of Test Radio Station as provided in Radio Law of Japan with respect to EVMs, or
3. Use of EVMs only after User obtains the Technical Regulations Conformity Certification as provided in Radio Law of Japan with respect to EVMs. Also, do not transfer EVMs, unless User gives the same notice above to the transferee. Please note that if User does not follow the instructions above, User will be subject to penalties of Radio Law of Japan.

【無線電波を送信する製品の開発キットをお使いになる際の注意事項】 開発キットの中には技術基準適合証明を受けていないものがあります。技術適合証明を受けていないものご使用に際しては、電波法遵守のため、以下のいずれかの措置を取っていただく必要がありますのでご注意ください。

1. 電波法施行規則第6条第1項第1号に基づく平成18年3月28日総務省告示第173号で定められた電波暗室等の試験設備でご使用いただく。
2. 実験局の免許を取得後ご使用いただく。
3. 技術基準適合証明を取得後ご使用いただく。

なお、本製品は、上記の「ご使用にあたっての注意」を譲渡先、移転先に通知しない限り、譲渡、移転できないものとします。

上記を遵守頂けない場合は、電波法の罰則が適用される可能性があることをご留意ください。日本テキサス・インスツルメンツ株式会社  
東京都新宿区西新宿 6 丁目 2 4 番 1 号  
西新宿三井ビル

3.3.3 *Notice for EVMs for Power Line Communication:* Please see [http://www.tij.co.jp/lstds/ti\\_ja/general/eStore/notice\\_02.page](http://www.tij.co.jp/lstds/ti_ja/general/eStore/notice_02.page) 電力線搬送波通信についての開発キットをお使いになる際の注意事項については、次のところをご覧ください。  
[http://www.tij.co.jp/lstds/ti\\_ja/general/eStore/notice\\_02.page](http://www.tij.co.jp/lstds/ti_ja/general/eStore/notice_02.page)

#### 3.4 European Union

3.4.1 *For EVMs subject to EU Directive 2014/30/EU (Electromagnetic Compatibility Directive):*

This is a class A product intended for use in environments other than domestic environments that are connected to a low-voltage power-supply network that supplies buildings used for domestic purposes. In a domestic environment this product may cause radio interference in which case the user may be required to take adequate measures.

- 
4. *EVM Use Restrictions and Warnings:*
    - 4.1 EVMS ARE NOT FOR USE IN FUNCTIONAL SAFETY AND/OR SAFETY CRITICAL EVALUATIONS, INCLUDING BUT NOT LIMITED TO EVALUATIONS OF LIFE SUPPORT APPLICATIONS.
    - 4.2 User must read and apply the user guide and other available documentation provided by TI regarding the EVM prior to handling or using the EVM, including without limitation any warning or restriction notices. The notices contain important safety information related to, for example, temperatures and voltages.
    - 4.3 *Safety-Related Warnings and Restrictions:*
      - 4.3.1 User shall operate the EVM within TI's recommended specifications and environmental considerations stated in the user guide, other available documentation provided by TI, and any other applicable requirements and employ reasonable and customary safeguards. Exceeding the specified performance ratings and specifications (including but not limited to input and output voltage, current, power, and environmental ranges) for the EVM may cause personal injury or death, or property damage. If there are questions concerning performance ratings and specifications, User should contact a TI field representative prior to connecting interface electronics including input power and intended loads. Any loads applied outside of the specified output range may also result in unintended and/or inaccurate operation and/or possible permanent damage to the EVM and/or interface electronics. Please consult the EVM user guide prior to connecting any load to the EVM output. If there is uncertainty as to the load specification, please contact a TI field representative. During normal operation, even with the inputs and outputs kept within the specified allowable ranges, some circuit components may have elevated case temperatures. These components include but are not limited to linear regulators, switching transistors, pass transistors, current sense resistors, and heat sinks, which can be identified using the information in the associated documentation. When working with the EVM, please be aware that the EVM may become very warm.
      - 4.3.2 EVMs are intended solely for use by technically qualified, professional electronics experts who are familiar with the dangers and application risks associated with handling electrical mechanical components, systems, and subsystems. User assumes all responsibility and liability for proper and safe handling and use of the EVM by User or its employees, affiliates, contractors or designees. User assumes all responsibility and liability to ensure that any interfaces (electronic and/or mechanical) between the EVM and any human body are designed with suitable isolation and means to safely limit accessible leakage currents to minimize the risk of electrical shock hazard. User assumes all responsibility and liability for any improper or unsafe handling or use of the EVM by User or its employees, affiliates, contractors or designees.
    - 4.4 User assumes all responsibility and liability to determine whether the EVM is subject to any applicable international, federal, state, or local laws and regulations related to User's handling and use of the EVM and, if applicable, User assumes all responsibility and liability for compliance in all respects with such laws and regulations. User assumes all responsibility and liability for proper disposal and recycling of the EVM consistent with all applicable international, federal, state, and local requirements.
  5. *Accuracy of Information:* To the extent TI provides information on the availability and function of EVMs, TI attempts to be as accurate as possible. However, TI does not warrant the accuracy of EVM descriptions, EVM availability or other information on its websites as accurate, complete, reliable, current, or error-free.
  6. *Disclaimers:*
    - 6.1 EXCEPT AS SET FORTH ABOVE, EVMS AND ANY MATERIALS PROVIDED WITH THE EVM (INCLUDING, BUT NOT LIMITED TO, REFERENCE DESIGNS AND THE DESIGN OF THE EVM ITSELF) ARE PROVIDED "AS IS" AND "WITH ALL FAULTS." TI DISCLAIMS ALL OTHER WARRANTIES, EXPRESS OR IMPLIED, REGARDING SUCH ITEMS, INCLUDING BUT NOT LIMITED TO ANY EPIDEMIC FAILURE WARRANTY OR IMPLIED WARRANTIES OF MERCHANTABILITY OR FITNESS FOR A PARTICULAR PURPOSE OR NON-INFRINGEMENT OF ANY THIRD PARTY PATENTS, COPYRIGHTS, TRADE SECRETS OR OTHER INTELLECTUAL PROPERTY RIGHTS.
    - 6.2 EXCEPT FOR THE LIMITED RIGHT TO USE THE EVM SET FORTH HEREIN, NOTHING IN THESE TERMS SHALL BE CONSTRUED AS GRANTING OR CONFERRING ANY RIGHTS BY LICENSE, PATENT, OR ANY OTHER INDUSTRIAL OR INTELLECTUAL PROPERTY RIGHT OF TI, ITS SUPPLIERS/LICENSORS OR ANY OTHER THIRD PARTY, TO USE THE EVM IN ANY FINISHED END-USER OR READY-TO-USE FINAL PRODUCT, OR FOR ANY INVENTION, DISCOVERY OR IMPROVEMENT, REGARDLESS OF WHEN MADE, CONCEIVED OR ACQUIRED.
  7. *USER'S INDEMNITY OBLIGATIONS AND REPRESENTATIONS.* USER WILL DEFEND, INDEMNIFY AND HOLD TI, ITS LICENSORS AND THEIR REPRESENTATIVES HARMLESS FROM AND AGAINST ANY AND ALL CLAIMS, DAMAGES, LOSSES, EXPENSES, COSTS AND LIABILITIES (COLLECTIVELY, "CLAIMS") ARISING OUT OF OR IN CONNECTION WITH ANY HANDLING OR USE OF THE EVM THAT IS NOT IN ACCORDANCE WITH THESE TERMS. THIS OBLIGATION SHALL APPLY WHETHER CLAIMS ARISE UNDER STATUTE, REGULATION, OR THE LAW OF TORT, CONTRACT OR ANY OTHER LEGAL THEORY, AND EVEN IF THE EVM FAILS TO PERFORM AS DESCRIBED OR EXPECTED.
-

8. *Limitations on Damages and Liability:*

8.1 *General Limitations.* IN NO EVENT SHALL TI BE LIABLE FOR ANY SPECIAL, COLLATERAL, INDIRECT, PUNITIVE, INCIDENTAL, CONSEQUENTIAL, OR EXEMPLARY DAMAGES IN CONNECTION WITH OR ARISING OUT OF THESE TERMS OR THE USE OF THE EVMS , REGARDLESS OF WHETHER TI HAS BEEN ADVISED OF THE POSSIBILITY OF SUCH DAMAGES. EXCLUDED DAMAGES INCLUDE, BUT ARE NOT LIMITED TO, COST OF REMOVAL OR REINSTALLATION, ANCILLARY COSTS TO THE PROCUREMENT OF SUBSTITUTE GOODS OR SERVICES, RETESTING, OUTSIDE COMPUTER TIME, LABOR COSTS, LOSS OF GOODWILL, LOSS OF PROFITS, LOSS OF SAVINGS, LOSS OF USE, LOSS OF DATA, OR BUSINESS INTERRUPTION. NO CLAIM, SUIT OR ACTION SHALL BE BROUGHT AGAINST TI MORE THAN TWELVE (12) MONTHS AFTER THE EVENT THAT GAVE RISE TO THE CAUSE OF ACTION HAS OCCURRED.

8.2 *Specific Limitations.* IN NO EVENT SHALL TI'S AGGREGATE LIABILITY FROM ANY USE OF AN EVM PROVIDED HEREUNDER, INCLUDING FROM ANY WARRANTY, INDEMNITY OR OTHER OBLIGATION ARISING OUT OF OR IN CONNECTION WITH THESE TERMS, , EXCEED THE TOTAL AMOUNT PAID TO TI BY USER FOR THE PARTICULAR EVM(S) AT ISSUE DURING THE PRIOR TWELVE (12) MONTHS WITH RESPECT TO WHICH LOSSES OR DAMAGES ARE CLAIMED. THE EXISTENCE OF MORE THAN ONE CLAIM SHALL NOT ENLARGE OR EXTEND THIS LIMIT.

9. *Return Policy.* Except as otherwise provided, TI does not offer any refunds, returns, or exchanges. Furthermore, no return of EVM(s) will be accepted if the package has been opened and no return of the EVM(s) will be accepted if they are damaged or otherwise not in a resalable condition. If User feels it has been incorrectly charged for the EVM(s) it ordered or that delivery violates the applicable order, User should contact TI. All refunds will be made in full within thirty (30) working days from the return of the components(s), excluding any postage or packaging costs.

10. *Governing Law:* These terms and conditions shall be governed by and interpreted in accordance with the laws of the State of Texas, without reference to conflict-of-laws principles. User agrees that non-exclusive jurisdiction for any dispute arising out of or relating to these terms and conditions lies within courts located in the State of Texas and consents to venue in Dallas County, Texas. Notwithstanding the foregoing, any judgment may be enforced in any United States or foreign court, and TI may seek injunctive relief in any United States or foreign court.

Mailing Address: Texas Instruments, Post Office Box 655303, Dallas, Texas 75265  
Copyright © 2019, Texas Instruments Incorporated

## IMPORTANT NOTICE AND DISCLAIMER

TI PROVIDES TECHNICAL AND RELIABILITY DATA (INCLUDING DATASHEETS), DESIGN RESOURCES (INCLUDING REFERENCE DESIGNS), APPLICATION OR OTHER DESIGN ADVICE, WEB TOOLS, SAFETY INFORMATION, AND OTHER RESOURCES "AS IS" AND WITH ALL FAULTS, AND DISCLAIMS ALL WARRANTIES, EXPRESS AND IMPLIED, INCLUDING WITHOUT LIMITATION ANY IMPLIED WARRANTIES OF MERCHANTABILITY, FITNESS FOR A PARTICULAR PURPOSE OR NON-INFRINGEMENT OF THIRD PARTY INTELLECTUAL PROPERTY RIGHTS.

These resources are intended for skilled developers designing with TI products. You are solely responsible for (1) selecting the appropriate TI products for your application, (2) designing, validating and testing your application, and (3) ensuring your application meets applicable standards, and any other safety, security, or other requirements. These resources are subject to change without notice. TI grants you permission to use these resources only for development of an application that uses the TI products described in the resource. Other reproduction and display of these resources is prohibited. No license is granted to any other TI intellectual property right or to any third party intellectual property right. TI disclaims responsibility for, and you will fully indemnify TI and its representatives against, any claims, damages, costs, losses, and liabilities arising out of your use of these resources.

TI's products are provided subject to TI's Terms of Sale ([www.ti.com/legal/termsofsale.html](http://www.ti.com/legal/termsofsale.html)) or other applicable terms available either on [ti.com](http://ti.com) or provided in conjunction with such TI products. TI's provision of these resources does not expand or otherwise alter TI's applicable warranties or warranty disclaimers for TI products.

Mailing Address: Texas Instruments, Post Office Box 655303, Dallas, Texas 75265  
Copyright © 2019, Texas Instruments Incorporated