

DESCRIPTION	APP'D./DATE	REV
C. W. ...	8-27-90	1

SAFETY ORGANIZATION(S):

THIS FILTER HAS BEEN FORMALLY RECOGNIZED, CERTIFIED OR APPROVED BY THE LISTED AGENCY. THEREFORE, ALL TEST/REQUIREMENTS SPECIFIED IN THE LATEST REVISION OF THE FOLLOWING AGENCY STANDARDS HAVE BEEN MET.

- UL RECOGNIZED CSA CERTIFIED OPERATING SPECIFICATIONS. LINE VOLTAGE/CURRENT, 50-60HZ
- UL 1283 CSA 22.2 NO. 0, 0.4, 8
- 20 OR 30 AMP, 250VAC PHASE TO NEUTRAL/GND
- 20 OR 30 AMP, 440VAC PHASE TO PHASE
- MAX. LEAKAGE CURRENT, EACH LINE TO GROUND
- OPERATING AMBIENT TEMP. RANGE, -10°C TO +40°C @ RATED CURRENT, I_r
- IN AN AMBIENT, T_a, HIGHER THAN 40°C, THE MAXIMUM OPERATING CURRENT, I_o, IS AS FOLLOWS:

$$I_o = I_r \sqrt{\frac{85 - T_a}{45}}$$

- 25°C to +85°C
- 21 DAYS @ 40°C 95% RH

RELIABILITY SPECIFICATIONS:

STORAGE TEMPERATURE, HUMIDITY.

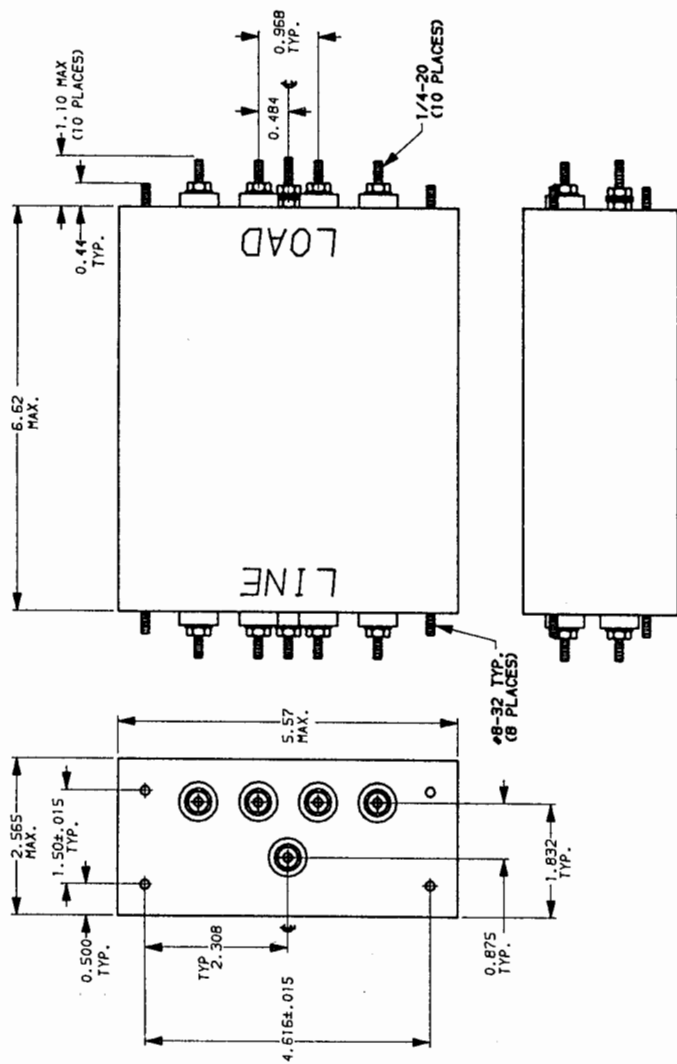
TEST SPECIFICATIONS:

- INDUCTANCE, 20A = 4.44mH NOMINAL 30A = 1.97 mH NOMINAL
- CAPACITANCE: (MEASURED @ 1 KHZ, 0.25 VAC MAX., 25°C ±1°C)
- PHASE/NEUTRAL TO GROUND, .018uF ±20%
- PHASE TO NEUTRAL, 3.29uF ±20%
- DISCHARGE RESISTOR; 110 KΩ
- PHASE/NEUTRAL TO GROUND AND PHASE TO PHASE INSULATION RESISTANCE, (W/O DISCHARGE RESISTOR)
- 5000 MΩ (MIN) AT 100 VDC
- 20°C AND 50% RH

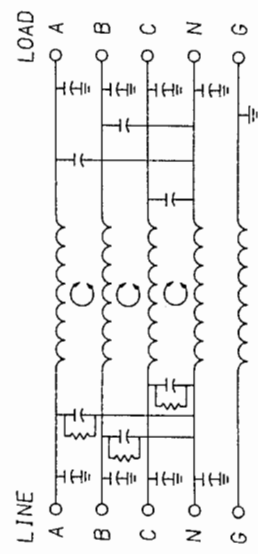
RECOMMENDED RECEIVING INSPECTION HIPOT:

- PHASE TO GROUND 1500 VAC FOR 1 MINUTE
- NEUTRAL TO GROUND 1500 VAC FOR 1 MINUTE
- PHASE TO NEUTRAL 1450 VDC FOR 1 MINUTE
- FILTER APPROVAL.

THE BEST WAY TO SELECT AND QUALIFY A FILTER IS FOR YOUR ENGINEERING TO TEST THE UNIT IN YOUR EQUIPMENT.



NOTE: UNLESS OTHERWISE SPECIFIED, TOLERANCE TO BE ±.045



50Ω - 50n (MINIMUM) INSERTION LOSS	
FREQUENCY MHZ	COMMON
.05	22 39 55 56 65 65 54
.15	15 30 55 55 61 63 50
.50	20 50 65 65 65 60 52
1.0	5 43 65 65 65 59 49
5.0	
10	
30	
50	
100	
300	
500	
1000	
3000	
5000	
10000	
30000	
50000	
100000	

This document is proprietary to CORCOM INC. and is not to be reproduced nor used for manufacturing purposes except on CORCOM's order or prior written consent.

TOLERANCE EXCEPT AS NOTED
DECIMAL: .XXX .XX .X ANGLES
ENGLISH: ± 1°
METRIC: ±

MATERIAL: AS SUPPLIED

FINISH:



POWER LINE FILTER

SCALE	DATE	DRG. NO.	REV.
1:2	5-9-88		
BY	ORIGINATOR		
TDL	CW		
		20AYP6C & 30AYP6C	01