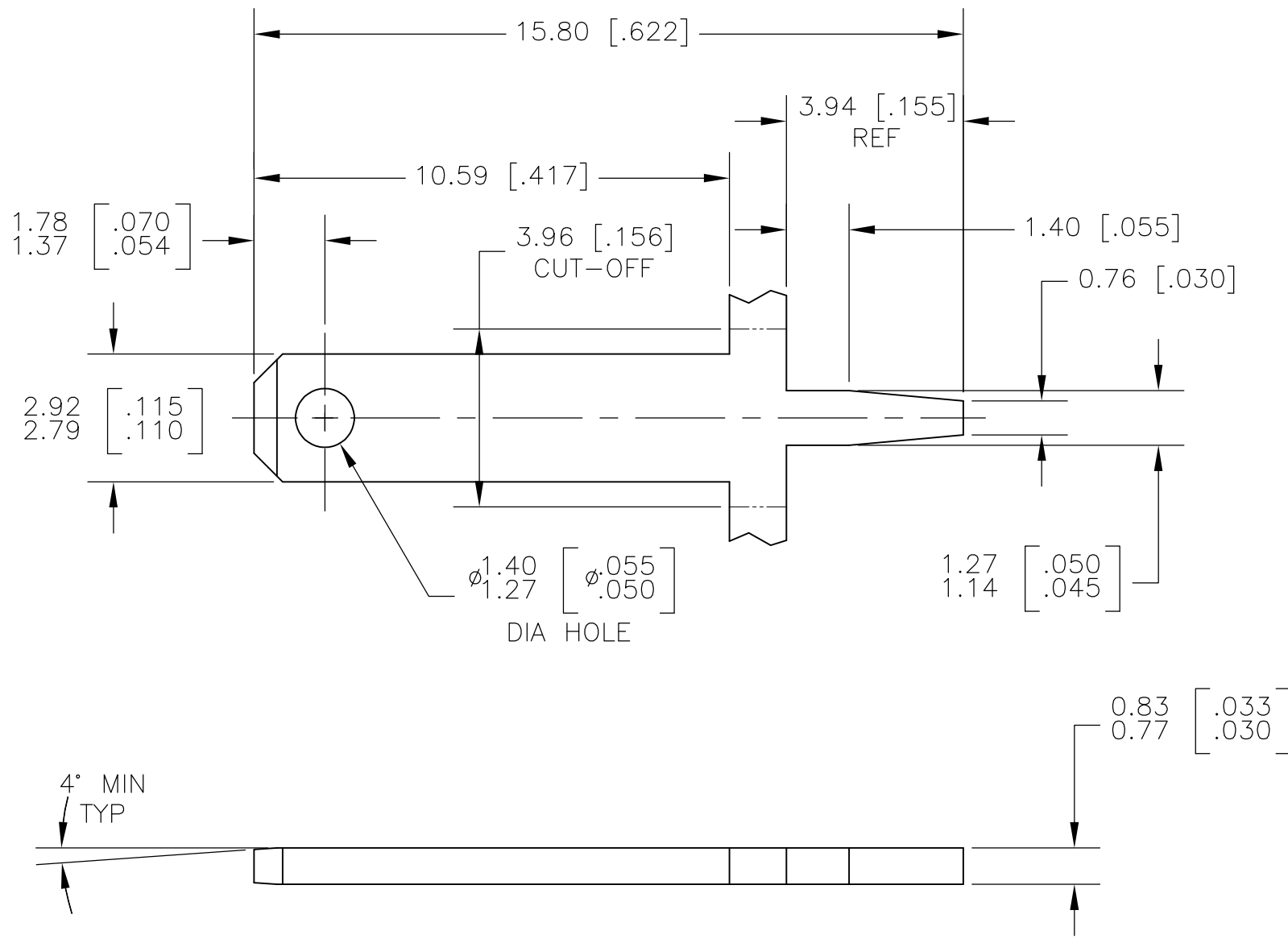


THIS DRAWING IS UNPUBLISHED. RELEASED FOR PUBLICATION
 © COPYRIGHT - By - ALL RIGHTS RESERVED.

LOC	DIST	REVISIONS					
AF	50	P	LTR	DESCRIPTION	DATE	DWN	APVD
		G		REVISED PER ECR-13-001204	22JUN13	KH	PD



- 1 CONTINUOUS STRIP ON REELS
- 2 SOLDER TINE PLATED TO COMPLY WITH SOLDERABILITY SPEC IEC 60512-12-1.
- 3 FITS .048/.044 DIA HOLE IN PC BOARD. WHEN PLATED THRU HOLES ARE TO BE USED, ADJUSTMENT TO THE HOLE DIAMETERS SHOULD BE MADE TO ALLOW FOR THE PLATING.
- 4 0.00381 [.000150] MIN TIN PLATE OVER 0.00254 [.000100] MIN COPPER.
- 5 .000150 MIN NICKEL PLATE.
- 6 PRELIMINARY - NOT FOR PRODUCTION.

5	TEMPER 3 STEEL	6	63756-2
4	BRASS		63756-1
FINISH	MATERIAL	PART NO.	
STE TE Connectivity			
NAME TAB, FASTON, P.C.BOARD, 2.79 [.110] SERIES			
DWN	JR RUTH	12DEC00	
CHK	MS FEHER	12DEC00	
APVD	G PORTA	12DEC00	
PRODUCT SPEC	-		
APPLICATION SPEC	114-2115		
WEIGHT	-		
SIZE	A3	CAGE CODE	00779
DRAWING NO	C-63756		RESTRICTED TO
CUSTOMER DRAWING			SCALE 8:1 SHEET 1 OF 1 REV G

THIS DRAWING IS A CONTROLLED DOCUMENT.	
DIMENSIONS: mm[INCHES]	TOLERANCES UNLESS OTHERWISE SPECIFIED:
	0 PLC ± -
	1 PLC ± -
	2 PLC ± 0.25 [.010]
	3 PLC ± -
	4 PLC ± -
	ANGLES ± -
MATERIAL SEE TABLE	FINISH SEE TABLE