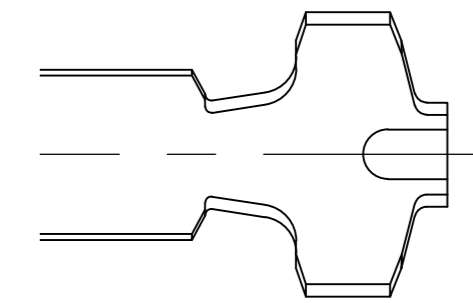
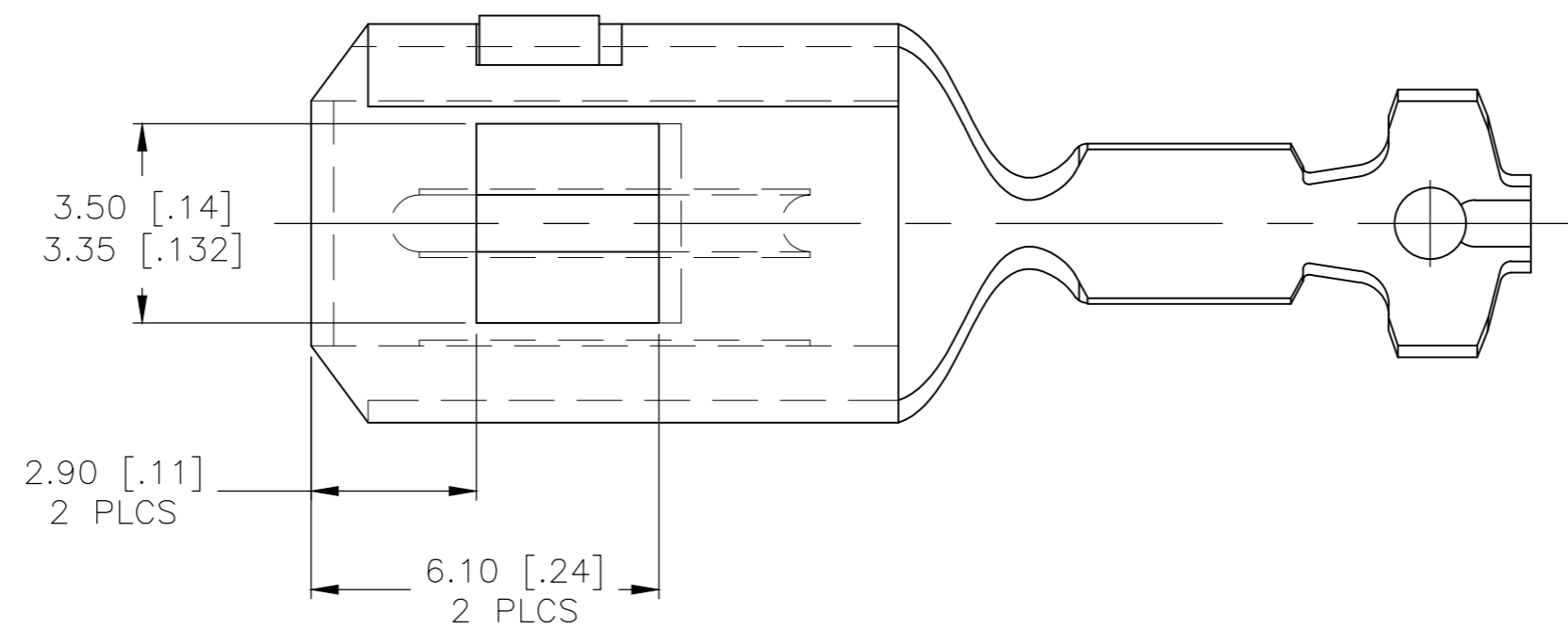
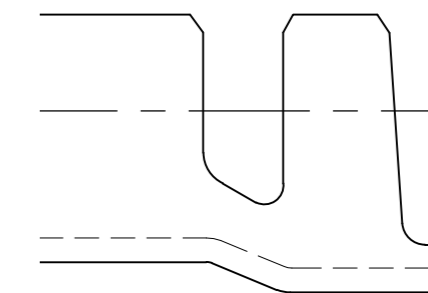
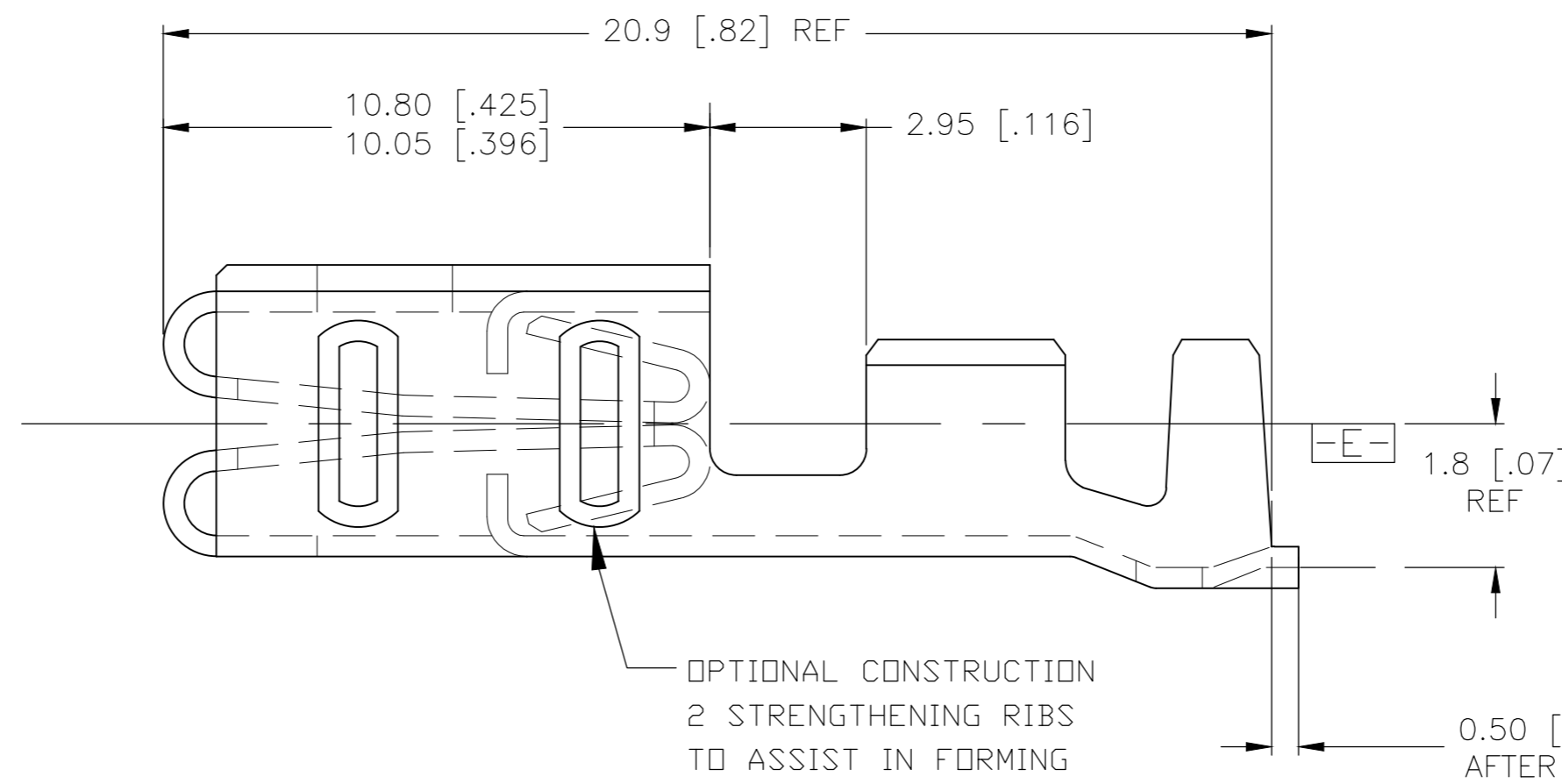


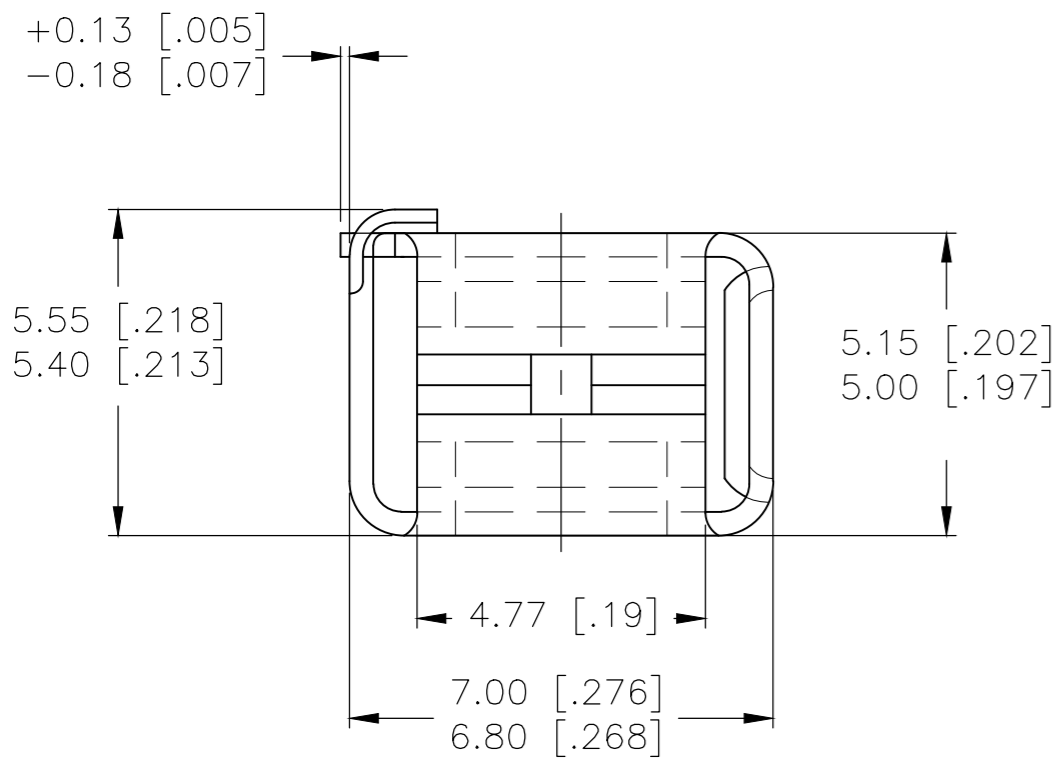
REVISIONS					
P	LTR	DESCRIPTION	DATE	DWN	APVD
C		REVISED PER ECO-19-002290	02APR2019	JMS	WW



-13 ONLY



-13 ONLY



**MATERIAL:**

- A. N/A
- B. N/A
- C. UNS-C26000 BRASS
- D. BERYLLIUM COPPER ALLOY UNS-C17410.
- E. UNS-C19400 COPPER

**FINISH:** HOT TIN DIP PRE TIN STRIP

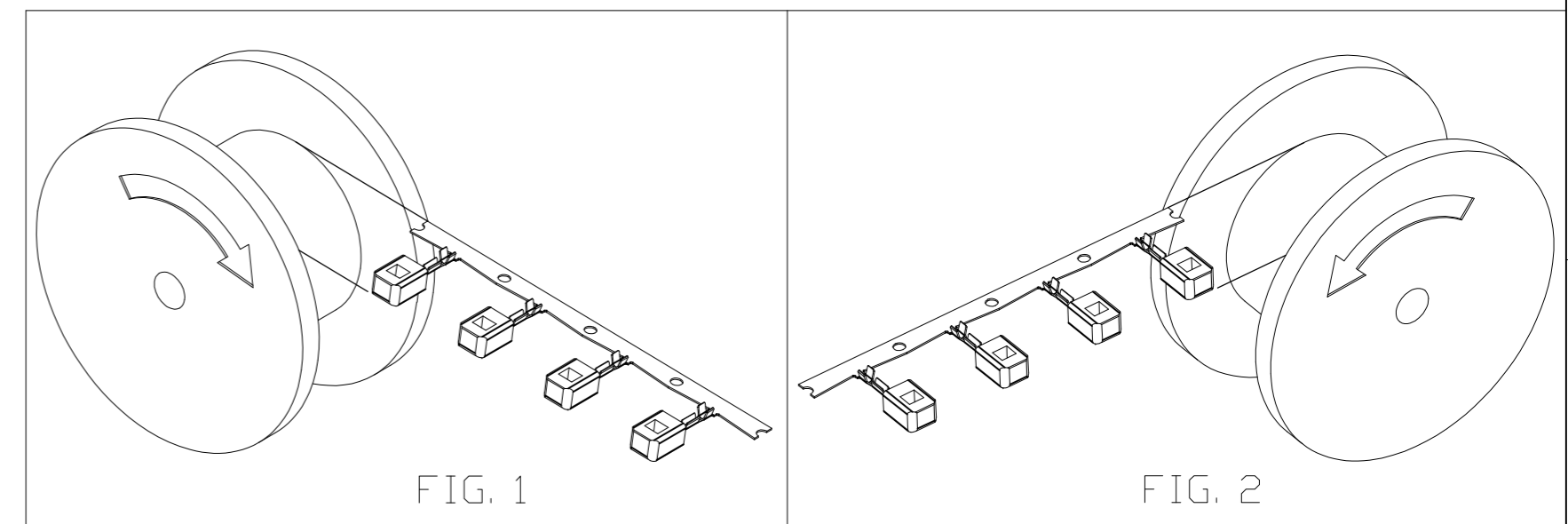


FIG. 1

FIG. 2

14	LIGHT	-	E8EB-14474 UA	1-1438243-1	E
14	HEAVY	1438243-9	E8EB 14474 VA	1438243-2	C
18	HEAVY	1-1438243-2	E7EB 14474 EA	1438243-1	C
WIRE GAGE	DUTY	TE P/N REWOUND SEE FIG. 2	FORD P/N	TE P/N SEE FIG. 1	MAT'L

WINDING					
THIS DRAWING IS A CONTROLLED DOCUMENT.			DWN JR BUSSARD 03 JUNE 2003		 TE Connectivity Ltd.
DIMENSIONS: mm			CHK DM REVAK 03 JUNE 2003		
TOLERANCES UNLESS OTHERWISE SPECIFIED:			APVD DM REVAK 03 JUNE 2003		
0 PLC ± - 1 PLC ± 0.2 2 PLC ± 0.15 3 PLC ± - 4 PLC ± - ANGLES ± 3°			PRODUCT SPEC		
MATERIAL SEE NOTES			FINISH SEE NOTES		NAME
APPLICATION SPEC			WEIGHT 0		SIZE A2
CUSTOMER DRAWING			SCALE 4:1		CAGE CODE 00779
			SHEET 1 of 1		DRAWING NO. 1438243
			REV C		RESTRICTED TO -