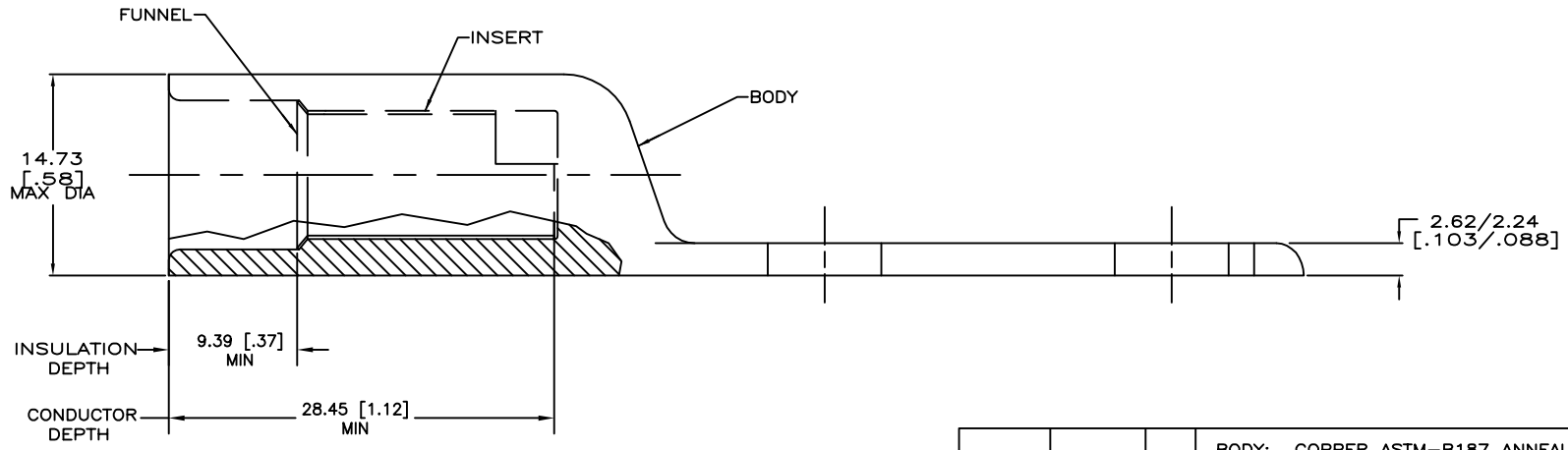
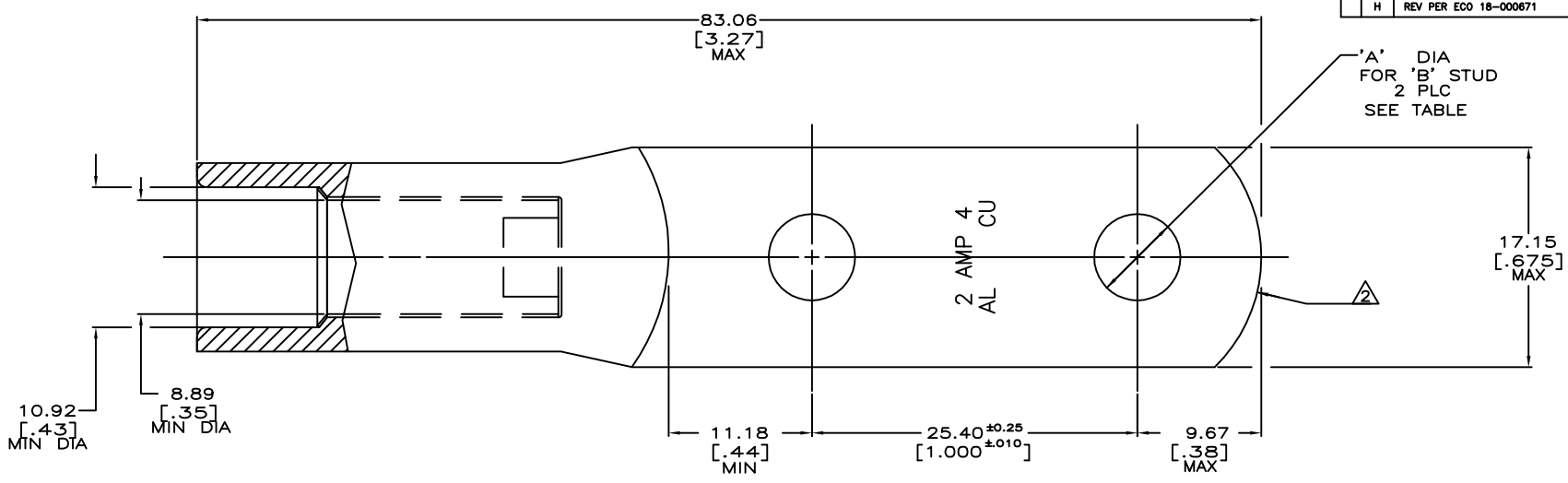


THIS DRAWING IS UNPUBLISHED. RELEASED FOR PUBLICATION
 © COPYRIGHT - By - ALL RIGHTS RESERVED.

REVISIONS				
#	LR	DESCRIPTION	DATE	DRW / APD
1	H	REV PER ECO 18-000671	2-16-18	CT / PD



1 WIRE INSULATION: 8.64[.340] - 9.65[.380] DIA

△ THE TONGUE RADIUS FEATURE IS NOT A TOOLING CONTROLLED DIMENSION AND MAY NOT BE A TRUE RADIUS.

43 GRAMS	9.9 ^{+0.13} [.390 ±.008]	3/8	BODY: COPPER ASTM-B187 ANNEALED TIN PL MIL-T-10727 0.00457[.000150] MIN THK INSERT & FUNNEL: BRASS PER ASTM B36 NICKEL PLATE SAE AMS QQ-N-290A, DATED JULY 2000, 0.00254 [.000100] MIN THK	55835-2
44 GRAMS	6.73 ^{+0.13} [.265 ±.008]	1/4		55835-1
WEIGHT	"A"	"B"	MATERIAL AND FINISH	PART NO.

THIS DRAWING IS A CONTROLLED DOCUMENT.

DRW: DK SCHRUM 6/15/92	TE Connectivity
CHK: WJ VOCKROTH 6/16/92	
APP: AJ KAUFMAN 6/16/92	
DIMENSIONS: MM [INCHES] TOLERANCES UNLESS OTHERWISE SPECIFIED: 0 PLC ± - 1 PLC ± - 2 PLC ± - 3 PLC ± - 4 PLC ± - ANGLES ± -	PRODUCT SPEC: 108-11011 APPLICATION SPEC: 114-2134 WEIGHT: 0.000000 CUSTOMER DRAWING
MATERIAL: SEE TABLE FINISH: SEE TABLE	SIZE: A2 CAGE CODE: 00779 DRAWING NO: 55835 SCALE: 4:1 SHEET: 1 of 1 REV: H