

REV. NO.	DATE	BY	CHKD.
AD 00	11/17/05	ECG	MS
B	06/17/18		

SPECIFICATIONS:

BREAK-BEFORE-MAKE

MATERIALS:
 FRAME: STEEL, ZINC PLATE
 ACTUATOR: PBT UL94HB, BLACK
 FIXED CONTACT/TERMINAL: COPPER ALLOY, SILVER OVER NICKEL PLATE
 MOVING CONTACT: COPPER ALLOY, SILVER CLAD
 TERMINAL BOARD: PHENOLIC, UL94HB

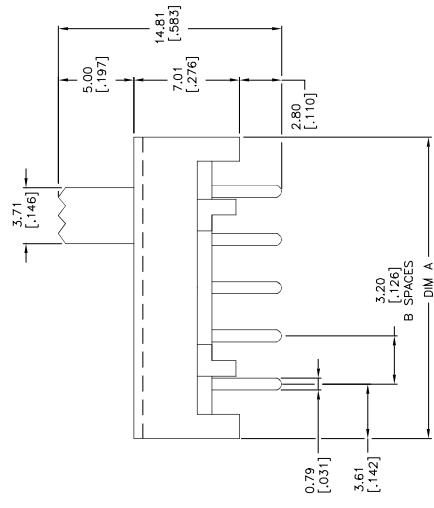
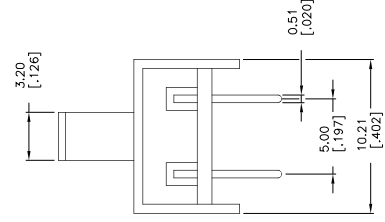
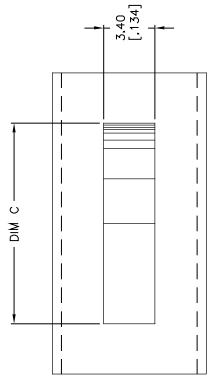
ELECTRICAL:
 CONTACT RATING: 250 MILLIAMPS@125V AC, 150 MILLIAMPS@12V DC
 CONTACT RESISTANCE: 30 MILLIOHMS MAX (INITIAL), 60 MILLIOHMS AFTER TEST
 INSULATION RESISTANCE: 500 MEGOHMS MIN
 DIELECTRIC STRENGTH: 500 VOLTS RMS AT SEA LEVEL
 LIFE EXPECTANCY: 10,000 CYCLES MIN. NO. LOAD, 6,000 AT RATED CURRENT

MECHANICAL:
 ACTUATION FORCE: 250 +150/-100 GRAMS
 TRAVEL: .126 (3.20)

ENVIRONMENTAL:
 OPERATING TEMPERATURE: -40°C TO +60°C
 STORAGE TEMPERATURE: -40°C TO +60°C
 RESISTANCE TO SOLDER HEAT: 260°C FOR 10 SEC PER 109-202, CONDITION B
 SOLDERABILITY PER EIA-364-56A, PROCEDURE 3, CONDITION B

NOTES:

- ALL MATERIALS AND FINISHES SHALL COMPLY WITH EU DIRECTIVE 2002/95/EC(OF 27JAN2003 (ROHS)
- FOR FUNCTION DIAGRAM SEE SHEET 2 OF 2
- ALL PERFORMANCE SPECIFICATIONS WERE TESTED IN ACCORDANCE WITH JIS-C-5441 UNLESS OTHERWISE STATED.



.776 [19.71]	6 SPACES	1.039 [26.39]	6	SLS260PC04	1825080-5
.650 [16.51]	5 SPACES	.913 [23.19]	5	SLS250PC04	1825080-4
.524 [13.31]	4 SPACES	.787 [19.99]	4	SLS240PC04	1825080-3
.398 [10.11]	3 SPACES	.661 [16.79]	3	SLS230PC04	1825080-2
.272 [6.91]	2 SPACES	.535 [13.59]	2	SLS220PC04	1825080-1
DIM C	DIM B	DIM A	POSITION	ALCO PART NUMBER	TYCO PART NUMBER

THIS DRAWING IS A CONTROLLED DOCUMENT. THE FOLLOWING INFORMATION IS REQUIRED FOR IDENTIFICATION AND CONTROL:

DATE OF ISSUE	11/17/05
ISSUED BY	MS/SARVER
REVISED BY	
DATE OF REV.	
REV. NO.	
REV. BY	
REV. DATE	
REV. REASON	

SLIDE SWITCH, SLS**PC04 SERIES, 2 TO 6 POSITION

REVISIONS TO: 1825080

CUSTOMER DRAWING: 1825080

Part: 6:1 Unit: 1 2 Per: B

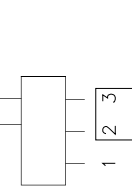
PART NUMBER

POSITION

BOTTOM VIEW

FUNCTION DIAGRAM

☐ - INDICATES TERMINALS CONNECTED



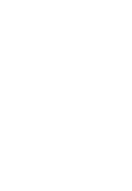
1825080-1

2



1825080-2

3



1825080-3

4



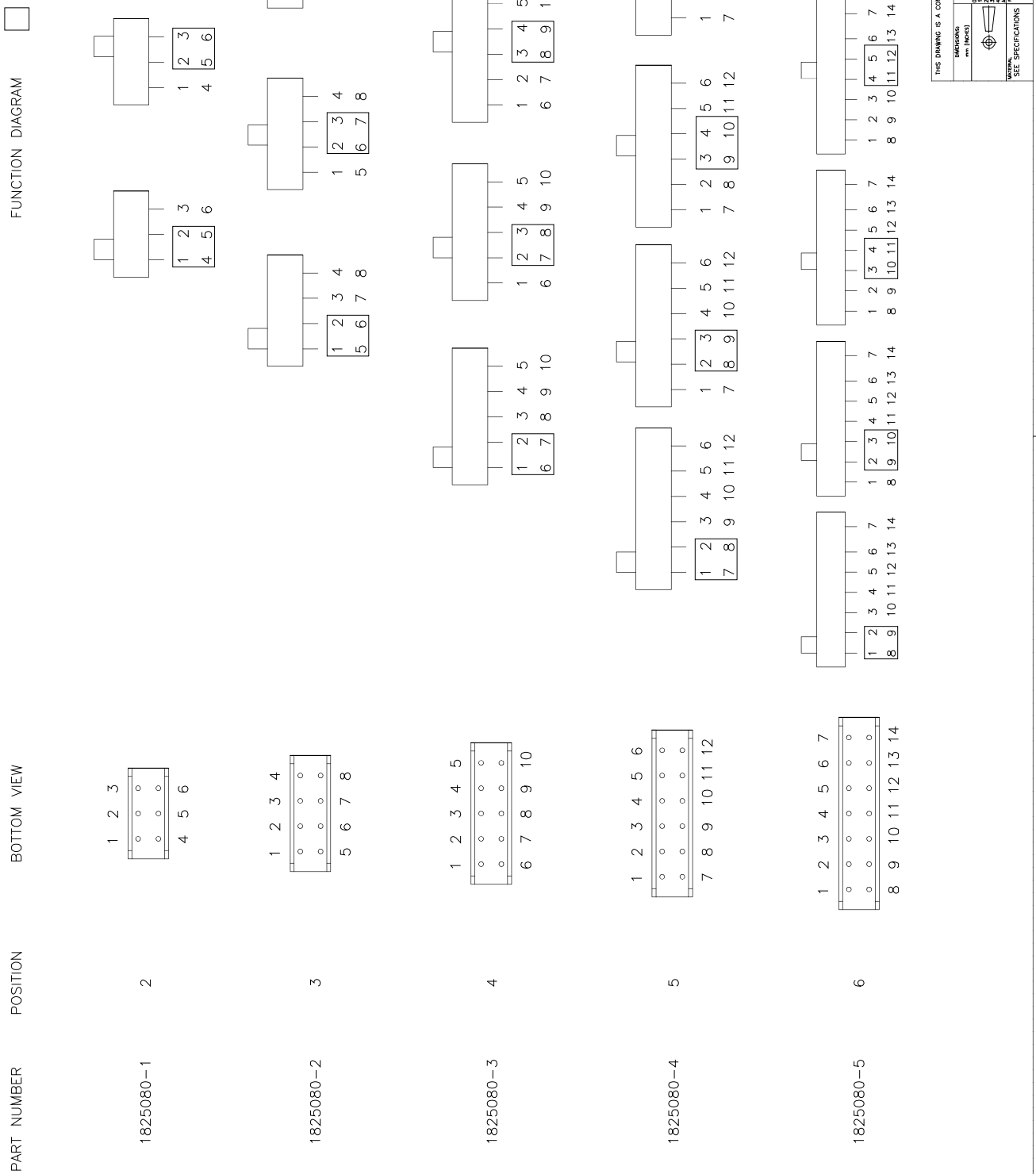
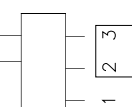
1825080-4

5



1825080-5

6



THIS DRAWING IS A CONTROLLED DOCUMENT. ITR 1825080-1

DIMENSIONS: CLASSIFIED DIMENSIONS: U.S.S. SAE
 UNIT: MILLIMETERS
 FINISH: SEE SPECIFICATIONS
 MATERIAL: SEE SPECIFICATIONS
 PART NUMBER: 1825080

THIS DRAWING IS A CONTROLLED DOCUMENT. ITR 1825080-1
 DIMENSIONS: CLASSIFIED DIMENSIONS: U.S.S. SAE
 UNIT: MILLIMETERS
 FINISH: SEE SPECIFICATIONS
 MATERIAL: SEE SPECIFICATIONS
 PART NUMBER: 1825080

THIS DRAWING IS A CONTROLLED DOCUMENT. ITR 1825080-1
 DIMENSIONS: CLASSIFIED DIMENSIONS: U.S.S. SAE
 UNIT: MILLIMETERS
 FINISH: SEE SPECIFICATIONS
 MATERIAL: SEE SPECIFICATIONS
 PART NUMBER: 1825080

THIS DRAWING IS A CONTROLLED DOCUMENT. ITR 1825080-1
 DIMENSIONS: CLASSIFIED DIMENSIONS: U.S.S. SAE
 UNIT: MILLIMETERS
 FINISH: SEE SPECIFICATIONS
 MATERIAL: SEE SPECIFICATIONS
 PART NUMBER: 1825080

THIS DRAWING IS A CONTROLLED DOCUMENT. ITR 1825080-1
 DIMENSIONS: CLASSIFIED DIMENSIONS: U.S.S. SAE
 UNIT: MILLIMETERS
 FINISH: SEE SPECIFICATIONS
 MATERIAL: SEE SPECIFICATIONS
 PART NUMBER: 1825080