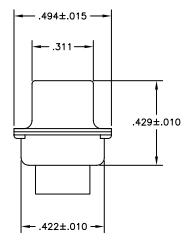
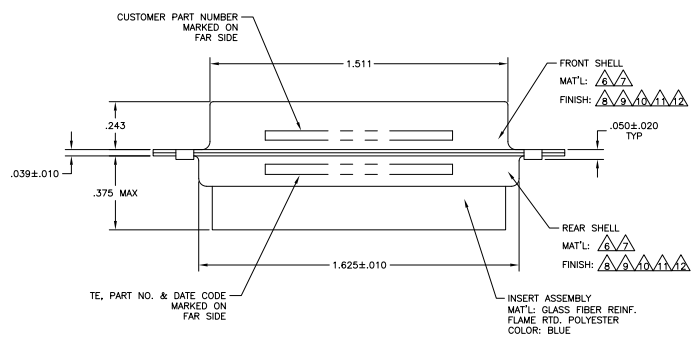
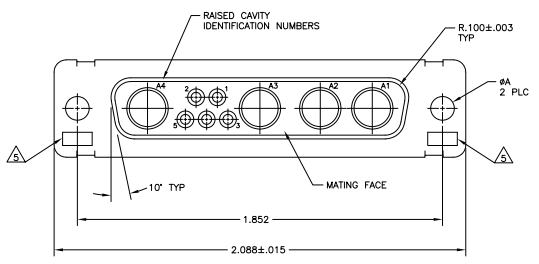


1. THIS RECEPTACLE WILL MATE WITH ANY 9C4, SIZE 3 PLUG IN AMPLIMITE SERIES.
 2. MAXIMUM WIRE INSULATION TO BE USED WITH THIS RECEPTACLE IS #.072.
 3. THIS CONNECTOR ACCEPTS (4) POWER 8, OR COAX SOCKET CONTACTS IN POSITIONS A1 THRU A4. PURCHASED SEPARATELY, WILL NOT ACCEPT WILL NOT ACCEPT RIGHT ANGLE COAX.
 4. THIS CONNECTOR ACCEPTS SIZE 20 SOCKET SIGNAL CONTACTS IN POSITIONS 1 THRU 5, PURCHASED SEPARATELY.
- △ UL/CSA DESIGNATION STAMPED IN THIS AREA, OPTIONAL.
 - △ STEEL PER ASTM-A-109.
 - △ BRASS PER MIL-C-50 AND ASTM-B-36 UNS NO. C26000.
 - △ CADMIUM PLATED PER QQ-P-416, TYPE II, CLASS 2 OVER COPPER PER MIL-C-14550, CLASS IV.
 - △ GOLD PLATED PER MIL-G-45204 TYPE II, GRADE C, CLASS 1 OVER COPPER PER MIL-C-14550, CLASS IV.
 - △ FINISH: TIN PER ASTM-B-545 .000200 MIN THK OVER COPPER PER AMS2418 .000100-.000200 THK.
 - △ FINISH: TIN PER ASTM-B-545 .000200 MIN THK OVER COPPER PER AMS2418 .000100-.000200 THK.
 - △ FINISH: ZINC PLATE PER ASTM-B-633 .000200-.000400 THK WITH SUPPLEMENTARY CHROMATE (Cr3+).



REV	DATE	DESCRIPTION	BY	CHK	APP
△	.120	T5935-0103-008			212502-7
△	.120	--			5-212502-5
△	.120	--			5-212502-1
△	.120	B010942-0018			212502-6
△	.120	--			212502-5
△	.154	--			212502-4
△	.154	311P405-11S-B-15			212502-3
△	.120	311P405-11S-B-12			212502-2
△	.120	--			212502-1
REMARKS	8A	CUSTOMER P/N			PART NO.

THIS DRAWING IS A CONTROLLED DOCUMENT.

DESIGNED BY	APPROVED BY	DATE	REV
DR	DR		

RECEPTACLE ASSEMBLY
 AMPLIMITE 9C4
 SIZE 3, SERIES 109, COAX MIX

DATE: 00778
 DRAWING NO: 212502

CUSTOMER DRAWING