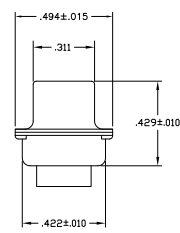
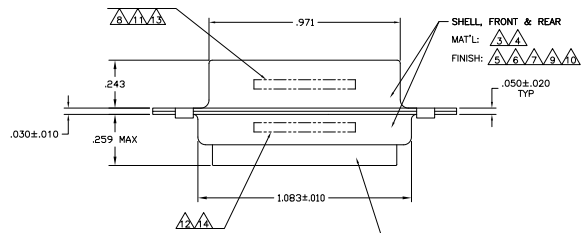
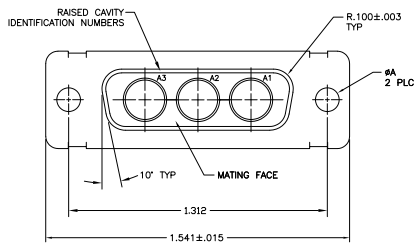


REV	DATE	DESCRIPTION	BY	CHK
1	1-8-10	REV PER ECO 00-018296	CT	RL



- THIS RECEPTACLE WILL MATE WITH ANY 3CS, SIZE 2 PLUG IN AMPLIMITE SERIES.
 - THIS CONNECTOR ACCEPTS (3) POWER B, OR COAX SOCKET CONTACTS IN POSITIONS A1 THRU A3, PURCHASED SEPARATELY.
- △ STEEL PER ASTM-A-109.
 - △ BRASS PER MIL-C-50 AND ASTM-B-36 UNS NO. C26000.
 - △ FINISH: TIN PER ASTM-B-545 .000200 MIN THK OVER COPPER PER AMS2418 .000100-.000200 THK.
 - △ GOLD PLATED PER MIL-G-45204 TYPE II, GRADE C, CLASS 1 OVER COPPER PER MIL-C-14550, CLASS IV.
 - △ FINISH: PLATED CADMIUM PER QQ-P-416, TYPE II, CLASS 2, OVER COPPER PER MIL-C-14550, CLASS IV.
 - △ IF CUSTOMER PART NUMBER DOES NOT FIT ON FRONT SHELL NEAR SIDE, THEN SPLIT BETWEEN FRONT AND REAR SHELL FAR SIDE.
 - △ FINISH: TIN PER ASTM-B-545 .000200 MIN THK OVER COPPER PER AMS2418 .000100-.000200 THK.
 - △ FINISH: ZINC PLATE PER ASTM-B-633 .000200-.000400 THK WITH SUPPLEMENTARY CHROMATE (Cr3+).
 - △ MANUFACTURER'S NAME, BRAND OR LOGO AND DATE CODE MARKED ON FAR SIDE. CUSTOMER PART NO MARKED ON NEAR SIDE.
 - △ MFG'S PART NUMBER MARKED ON FAR SIDE.
 - △ MARK DATE CODE AND CUSTOMER PART NUMBER, FAR SIDE.
 - △ MARK MFG PART NUMBER ON NEAR SIDE.

INSERT ASSEMBLY
MAT'L: POLYESTER PER MIL-M-24519
TYPE: OPT-30F
COLOR: BLUE

REMARKS	ØA	CUSTOMER PART NO.	PART NO.
△△△△△	.120	-	5-445705-4
△△△△△	.120	T5935-0103-005	445705-8
△△△△△	.120	-	445705-7
OBSOLETE △△△△△	.120	A010942-0042	445705-6
△△△△△	.120	B010942-0014	445705-5
△△△△△	.120	-	445705-4
△△△△△	.154	311P405-7S-B-15	445705-3
△△△△△	.120	311P405-7S-B-12	445705-2
△△△△△	.120	-	445705-1

THIS DRAWING IS A CONTROLLED DOCUMENT. TYPED BY: T. THOMAS. DRAWN BY: T. THOMAS. CHECKED BY: T. THOMAS. APPROVED BY: T. THOMAS.

REVISIONS: 1. REV PER ECO 00-018296

RECEPTACLE ASSEMBLY
AMPLIMITE 3C3
SIZE 2, SERIES 109, COAX MIX

DATE: 10/07/09
DRAWING NO: 445705

CUSTOMER DRAWING