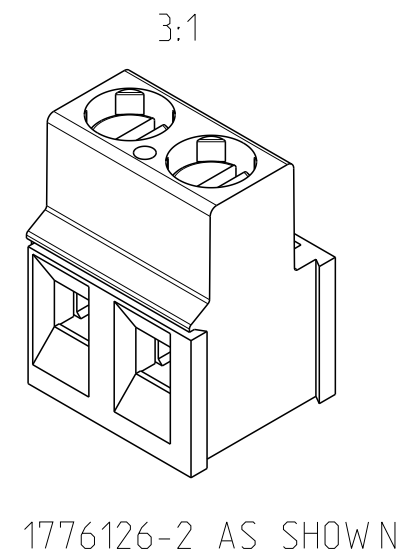
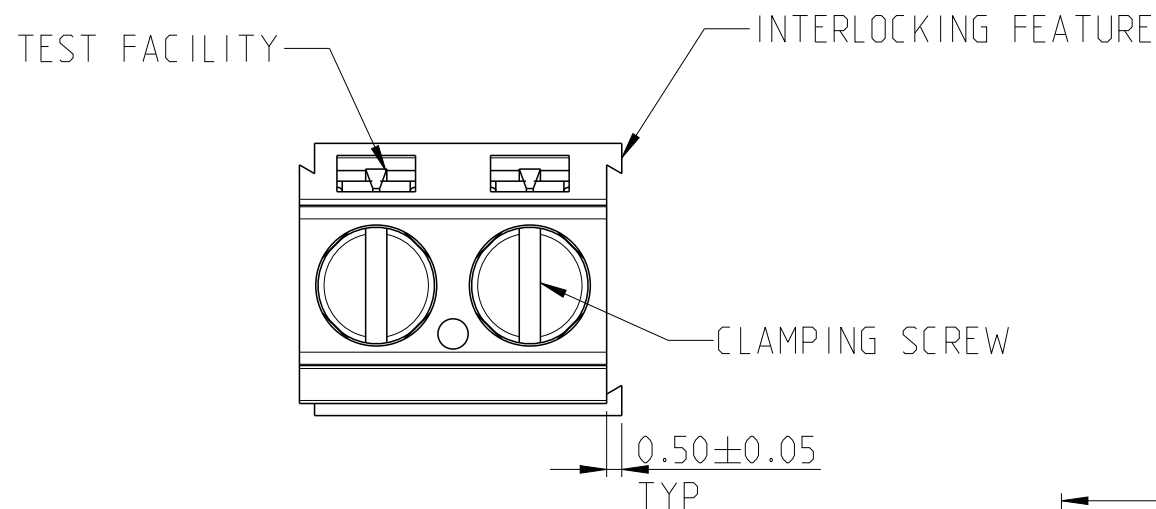


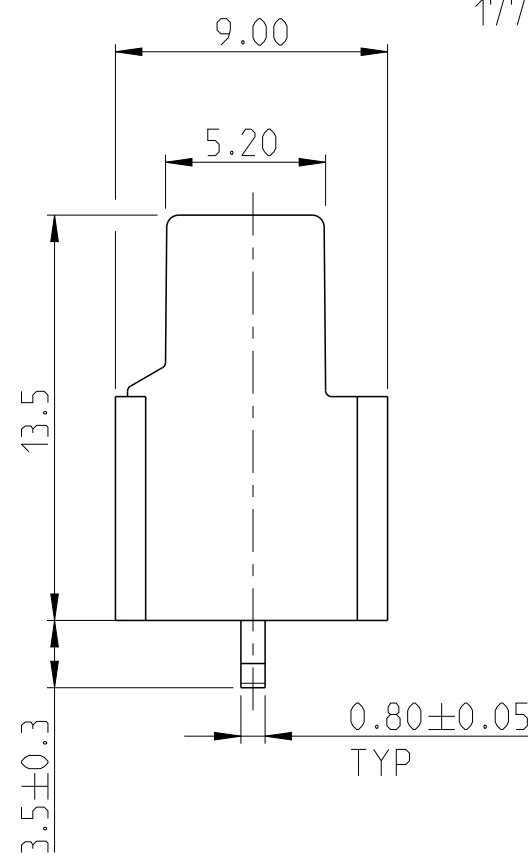
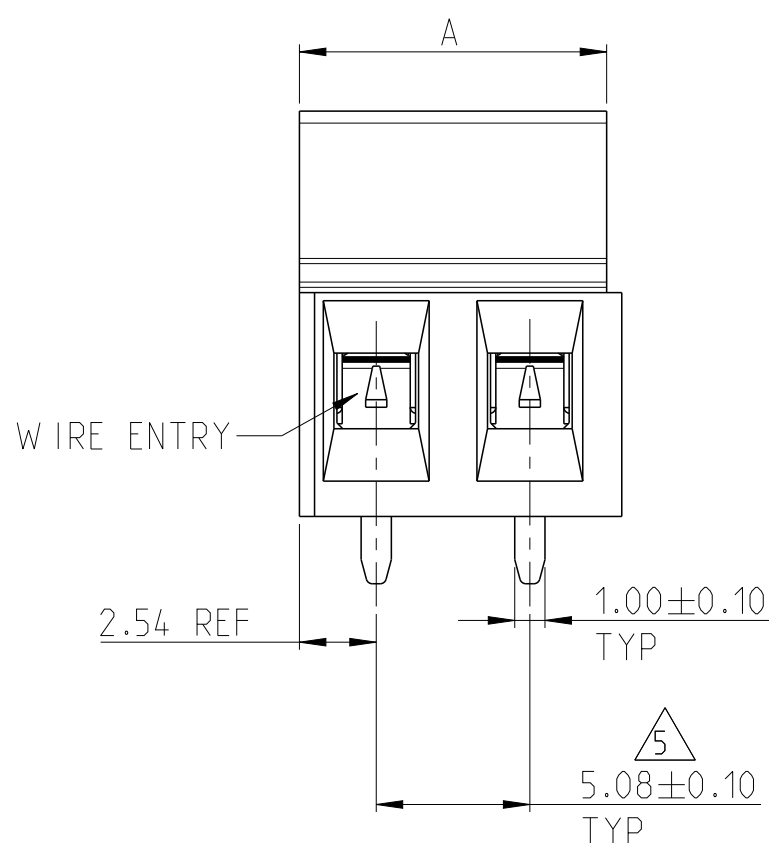
REVISIONS

P	LTR	DESCRIPTION	DATE	DWN	APVD
0		RELEASED EC OG3B-0612-04	02JUN2005	SW	CR
A		HOUSING SIDE WALLS ARE MADE PARALLEL	03MAR2016	FP	NG

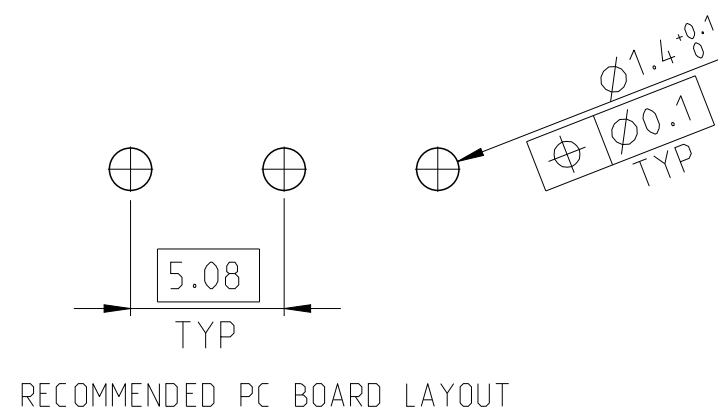


NOTES

- MATERIALS AND FINISH:**
 HOUSING: HIGH TEMPERATURE POLYAMIDE, UL 94-V0, BLACK.
 CLAMP : BRASS, NICKEL PLATED.
 TERMINAL : BRASS, TIN PLATED.
 CLAMPING SCREW : M3, BRASS, NICKEL PLATED.
- MECHANICAL**
 RECOMMENDED TIGHTENING TORQUE : 0.60 Nm
 PCB THICKNESS : MAX 2.4 mm
 WIRE STRIPPING LENGTH : 5.5 - 6.5 mm
- ELECTRICAL**
 WIRE RANGE : 30 - 13 AWG
 MAX. VOLTAGE : 300 V
 MAX CURRENT : 24 A
 CONTACT RESISTANCE : < 15 m Ohm
 INSULATION RESISTANCE : > 1000 M Ohm (500V DC)
- OPERATING TEMPERATURE RANGE:** -40 °C TO +110 °C
 TOLERANCE NOT CUMULATIVE.
- RECOGNIZED UNDER THE COMPONENT PROGRAM OF UNDERWRITERS LABORATORIES INC. FILE No E60677.



15.24	3	1776126-3
10.16	2	1776126-2
A	NO OF POSN.	TE PART NUMBER



THIS DRAWING IS A CONTROLLED DOCUMENT.		DWN S.WELDON 02JUN2005	STE TE Connectivity	
DIMENSIONS: mm		CHK C.RICHARD 02JUN2005		
TOLERANCES UNLESS OTHERWISE SPECIFIED:		APVD C.RICHARD 02JUN2005	NAME	
0 PLC ±	1 PLC ±0.3	PRODUCT SPEC	TERMINAL BLOCK, PCB MOUNT, STACKABLE W/ INTERLOCK, SIDE WIRE ENTRY, HIGH TEMP, 5.08mm PITCH	
2 PLC ±0.25	3 PLC ±	APPLICATION SPEC	SIZE	CAGE CODE
4 PLC ±	ANGLES ±2°	WEIGHT	A3	-
MATERIAL -	FINISH -	CUSTOMER DRAWING	DRAWING NO	RESTRICTED TO
SEE NOTES	SEE NOTES	SCALE 4:1	©=1776126	-
			SHEET 1 OF 1	REV A