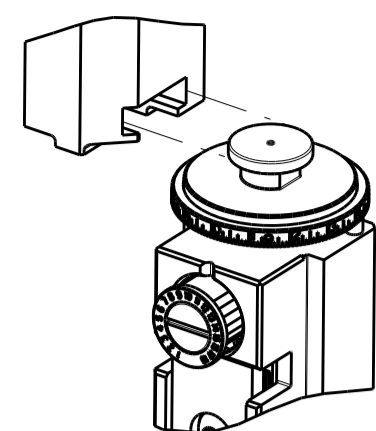


| PART NUMBER | REVISION | DESCRIPTION | FEED TYPE |
|-------------|----------|---------------------------------|-----------|
| 2151711-2 | D | FINE CRIMP HEIGHT ADJUST | PNEUMATIC |
| 7-2151711-2 | D | PNEUMATIC AND CRIMP TOOLING KIT | PNEUMATIC |
| 7-2151711-7 | A | CRIMP TOOLING KIT | - |

ATLANTIC VERSION TERMINATOR INTERFACE ADAPTER

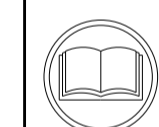


| APPLICATOR DATA | | |
|-----------------|----------------|------|
| CRIMP | SIZE | TYPE |
| WIRE | 3.63 mm [.143] | F |
| INSUL | 7.20 mm [.283] | O |

APPLICATOR INSTRUCTIONS
408-35042

| TERMINAL DATA: DELPHI PACKARD TERMINAL & CRIMP SPECIFICATION | | | |
|--|------------------------------|-----------|---------------------|
| TERMINAL NAME: MALE METRI-PACK 480 | | | |
| WIRE STRIP LENGTH | INSULATION DIAMETER RANGE | | |
| 5.20-6.00 mm [.205-.236 IN] | Ø3.49-5.24 mm [.137-.206 IN] | | |
| TERMINAL APPLICATION SPECIFICATION | DELPHI PACKARD | | |
| TERMINALS APPLIED | 5 | | |
| TE TERMINAL | DELPHI PACKARD TERMINAL | TE SEAL | DELPHI PACKARD SEAL |
| 1572019-1 | 12052172 | 1572026-1 | 15324989 |

| WIRE SIZE | CRIMP HEIGHT mm [INCH] | CRIMP HEIGHT REFERENCE SETTING |
|-----------|-------------------------------|--------------------------------|
| 5.00mm2 | 2.25 +/- 0.05 [.089 +/- .002] | 8.5 |



- 1 RECOMMENDED SPARE PARTS
- 2 REFER TO SUPPLIED INSTRUCTION SHEET FOR CLEANING, LUBRICATION AND STORAGE OF APPLICATOR.
- 3 APPLY PART NUMBER 2-23419-6 LOCTITE TO THREADS OF ITEM 242.
- 4 CRIMP HEIGHT REFERENCE SETTING WAS THE SETTING USED WHEN THE APPLICATOR WAS QUALIFIED AT THE FACTORY. ADJUSTMENT MAY BE NECESSARY WHEN RUNNING APPLICATOR IN THE FIELD.
- 5 TERMINAL PITCH IS NOT COMPATIBLE WITH MECHANICAL FEED.
- 6 APPLY TORO-SEAL IN ALLEN SOCKET TO FILL HOLE AFTER FLAT HD HAS BEEN ADJUSTED TO CORRECT HEIGHT AT QUALIFICATION. APPLY #1-23419-5 LOC-TITE TO THREADS.
7. UNLESS SPECIFIED OTHERWISE TORQUE VALUES SHALL BE USED PER DOCUMENT, 101-35000.

***WARNING**
ON INSTALLATION, SET WIRE DISC TO CRIMP HEIGHT REFERENCE SETTING FOR LARGEST WIRE SIZE. CRIMP HEIGHT REFERENCE SETTINGS GREATER THAN THE VALUE SHOWN MAY CAUSE DAMAGE TO THE CRIMP TOOLING, REFER TO THE INSTRUCTION SHEET FOR PROPER SETUP AND ADJUSTMENTS.

| ITEM NO | DESCRIPTION | PART NO | QUANTITY |
|---------|---------------|-----------|----------|
| 282 | INSERT, SHEAR | 2280441-1 | 1 |
| 77-72 | PART NO | | 2 |

ATLANTIC VERSION
Shown on sheets 1 of 4 & 2 of 4
(Pacific version shown on sheets 3 of 4 & 4 of 4)

| LOC | DIST | REVISIONS | | | |
|-----|------|-----------|-----------|----|-----|
| A | 66 | REV | DATE | BY | CHK |
| | | B | 13FEB2015 | RK | GB |
| | | C | 20JUN2017 | TB | CT |
| | | D | 18OCT2018 | FZ | KZ |

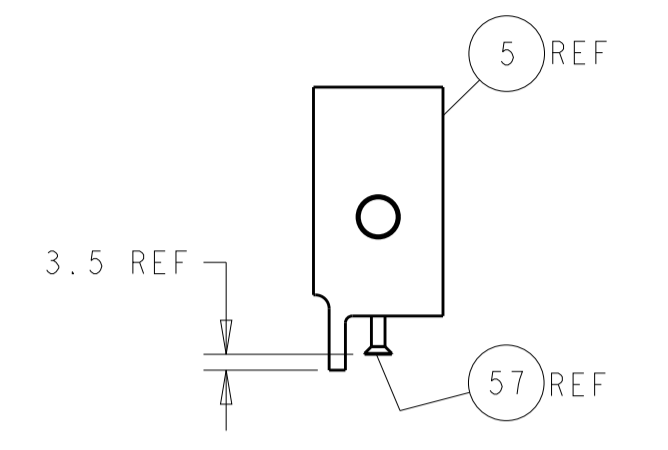
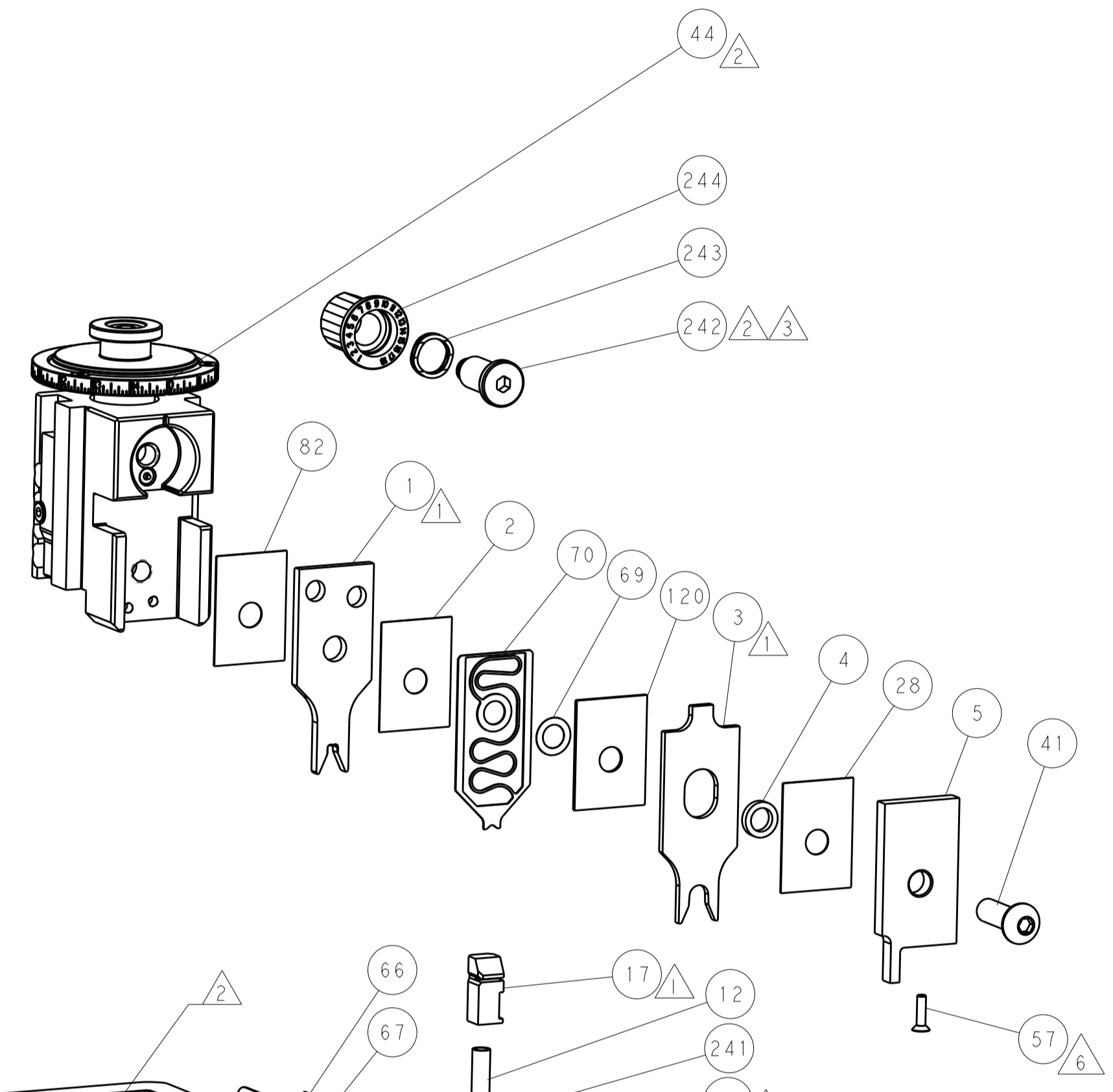
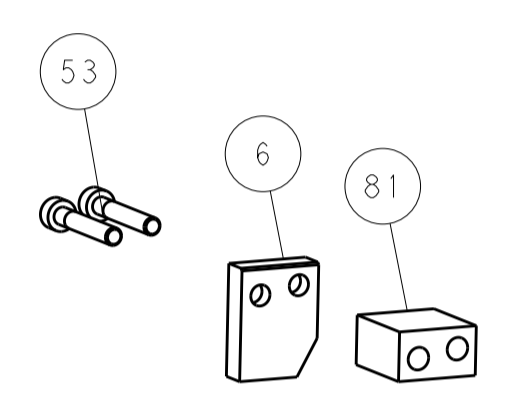
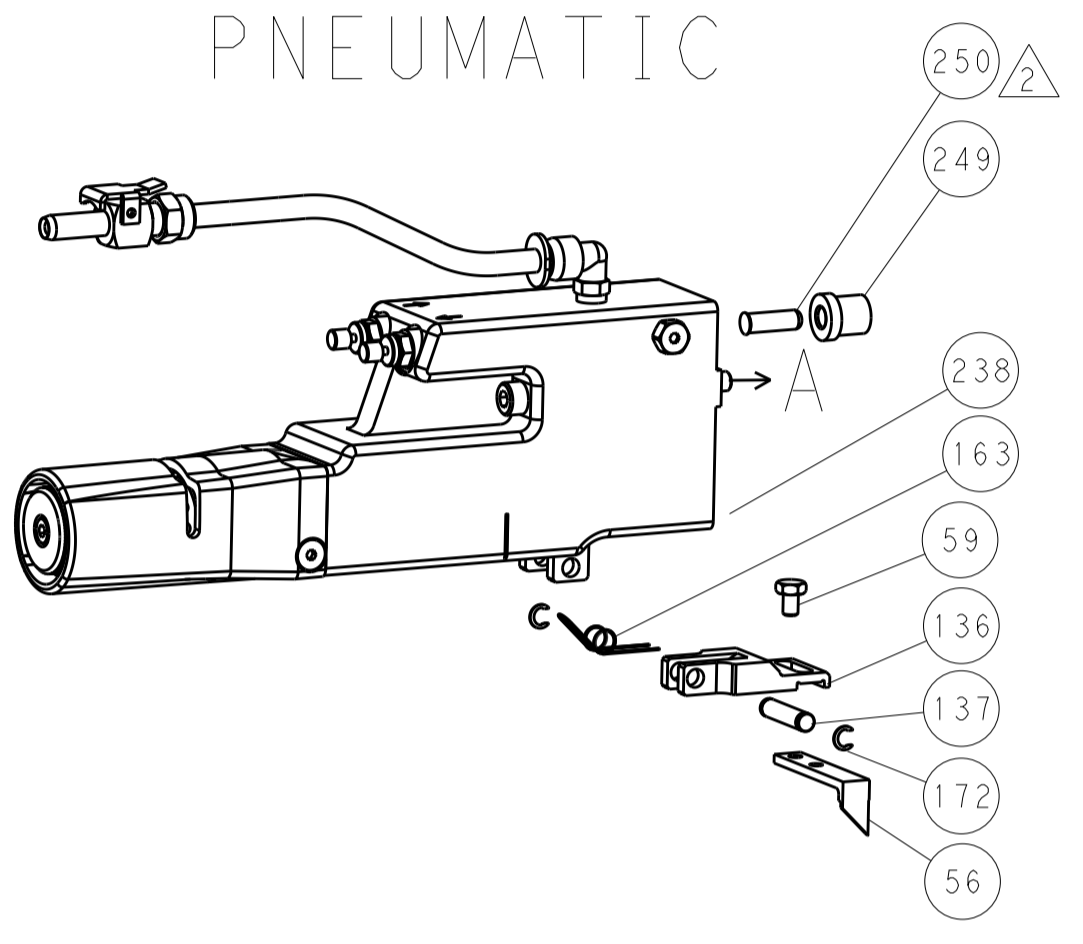
| ITEM NO | DESCRIPTION | PART NO | QUANTITY |
|-----------|-------------------------------------|-------------|----------|
| - 1 1 | PUSH ROD, AIR FEED | 2119640-1 | 250 |
| - 1 1 | BUSHING, FLANGED | 1803259-1 | 249 |
| - 1 1 | FEED CAM, AIR FEED | 2119641-1 | 248 |
| - 1 1 | CAM, SNAIL, INSULATION ADJUSTMENT | 2119082-2 | 244 |
| - 1 1 | WASHER, WAVE SPRING, CREST-TO-CREST | 2079764-1 | 243 |
| - 1 1 | RETAINER, INSULATION DIAL | 2119083-1 | 242 |
| - 2 2 | SCR, SKT HD CAP M3 X 4.0 | 7-18023-7 | 241 |
| - 1 1 | AIR FEED MODULE | 2063440-1 | 238 |
| - 1 1 | STOP, SHEAR | 356885-4 | 237 |
| - 2 2 | RING, RETAIN, EXTERN, 3/16 CRESCENT | 21045-3 | 172 |
| - REF REF | COUNTER, MAGNETIC | 994970-2 | 164 |
| - 1 1 | SPRING, FEED FINGER | 240638-1 | 163 |
| - 1 1 | PIN, RETAIN, GRVD, 3/16 X .854 | 3-23627-7 | 137 |
| - 1 1 | HOLDER, FEED FINGER, AF | 2119799-1 | 136 |
| - 1 1 | SPRING, COMPRESSION | 1-22281-8 | 121 |
| - 1 1 | SPACER, CRIMPER | 455888-9 | 120 |
| - 1 1 | WASHER, FLAT, REG M4 | 1-18028-2 | 119 |
| - 1 1 | SCREW, LOCKING | 2844908-1 | 99 |
| - 1 1 | POST, LOCKING | 2844907-1 | 98 |
| - 1 1 | FRONT STRIP GUIDE | 1-690438-0 | 96 |
| - 2 2 | SCR, SKT HD CAP, RoHS, M3 X 8.0 | 2168083-1 | 95 |
| - 1 1 | SCR, SKT HD CAP, RoHS, M5 X 65 | 2168083-6 | 93 |
| - 1 1 | SPACER, CRIMPER | 455888-4 | 82 |
| - 1 1 | SPACER | 8-240641-1 | 81 |
| - 2 2 | SCR, BHSC, RoHS (M4 X 6) | 1-2079383-8 | 79 |
| - 1 1 | EXTENSION PLATE | 1803096-1 | 78 |
| - 2 2 | SCR, SKT HD CAP, RoHS, M3 X 8.0 | 2168083-1 | 77 |
| - 1 1 | FENCE | 1633782-6 | 76 |
| - 1 1 | DOCUMENTATION PACKAGE | 1803607-1 | 71 |
| - 1 1 | DEPRESSOR, WIRE | 2119791-5 | 70 |
| - 1 1 | WASHER, SPACER | 2119943-1 | 69 |
| - 1 1 | TAG, IDENTIFICATION | 2119740-1 | 67 |
| - 2 2 | SCREW, DRIVE, RH, RoHS, 2 x .188 | 2168078-1 | 66 |
| - 2 2 | SCR, SET, FLT PNT, M5 X 20.0 | 2-18032-5 | 61 |
| - 1 1 | SCR, SKT HD CAP, RoHS, M4 X 8.0 | 2168083-2 | 60 |
| - 1 1 | SCR, HEX HD CAP, M4 X 6.0 | 5-18022-5 | 59 |
| - 1 1 | SCR, FLT SKT HD CAP M3 X 12.0 | 985575-4 | 57 |
| - 1 1 | PAWL, FEED | 1338685-1 | 56 |
| - 4 4 | SCR, SKT HD CAP, RoHS, M4 X 12.0 | 2168083-3 | 54 |
| - 2 2 | SCR, SKT HD CAP, RoHS, M4 X 25 | 1-2168083-2 | 53 |
| - 1 1 | SCR, SKT HD CAP M4 X 6.0 | 18023-9 | 49 |
| - 1 1 | APPLICATOR BASIC ASSEMBLY, SF | 1803583-3 | 46 |
| - 1 1 | RAM ASSEMBLY, SF ATLANTIC | 1803515-1 | 44 |
| - 1 1 | SCR, BHSC, RoHS (M8 X 25) | 1803602-1 | 41 |
| - 2 2 | SCR, BHSC, RoHS (M4 X 20) | 2079383-5 | 33 |
| - 2 2 | SPACER, CYLINDRICAL, STRIP GUIDE | 1-2844962-7 | 30 |
| - 1 1 | PLATE, STRIP GUIDE | 1-2844938-7 | 29 |
| - 1 1 | SPACER, CRIMPER | 455888-4 | 28 |
| - 2 2 | SPRING, COMPRESSION | 22283-1 | 27 |
| - 1 1 | LEVER, DRAG RELEASE | 356835-1 | 26 |
| - 1 1 | DRAG, TERMINAL | 240792-1 | 25 |
| - 1 1 | STRIP GUIDE | 1-1320928-5 | 24 |
| - 1 1 | SCR, SKT HD SHLDR 5.0 DIA X 6.0 | 980371-4 | 23 |
| - 1 1 | SCR, SKT HD CAP, RoHS, M4 X 8.0 | 2168083-2 | 21 |
| - 1 1 | WASHER, FLAT, REG M4 | 1-18028-2 | 20 |
| - 1 1 | STRIPPER, SIDE FEED | 2119533-1 | 19 |
| - 1 1 | FLOATING SHEAR, REAR | 690463-1 | 17 |
| - 2 2 | SCR, SKT HD CAP, RoHS, M3 X 6 | 1-2168083-1 | 16 |
| - 1 1 | SHEAR PLATE, REAR | 1-690464-6 | 15 |
| - 1 1 | SHEAR HOLDER, REAR | 2119862-1 | 14 |
| - 1 1 | INSERT, SHEAR | 2119806-1 | 13 |
| - 2 2 | SPRING, COMPRESSION | 3-22280-3 | 12 |
| - 1 1 | STOP, SHEAR | 1-356885-4 | 11 |
| - 1 1 | SHEAR HOLDER, FRONT | 2119805-2 | 10 |
| - 1 1 | FLOATING SHEAR, FRONT | 318059-4 | 9 |
| 1 2 1 | ANVIL, COMBINATION | 1633930-8 | 8 |
| - - - | - | - | 7 |
| - 1 1 | DEPRESSOR SHEAR, REAR | 1-690468-7 | 6 |
| - 1 1 | DEPRESSOR, SHEAR | 2-2119781-2 | 5 |
| - 1 1 | BLOCK, CRIMPER SPACER | 238011-4 | 4 |
| 1 2 1 | CRIMPER, INSULATION O | 1803019-9 | 3 |
| - 1 1 | SPACER, CRIMPER | 455888-3 | 2 |
| 1 2 1 | CRIMPER, WIRE | 4-1633730-2 | 1 |

| DIMENSIONS: | | TOLERANCES UNLESS OTHERWISE SPECIFIED: | | DRAWING NO | |
|-------------|----------|--|---------|--|---------|
| mm | 0 PLC ± | 1 PLC ± | 2 PLC ± | 3 PLC ± | 4 PLC ± |
| | ANGLES ± | | | | |
| MATERIAL | | FINISH | | WEIGHT | |
| | | | | Customer Accessible Production Drawing | |

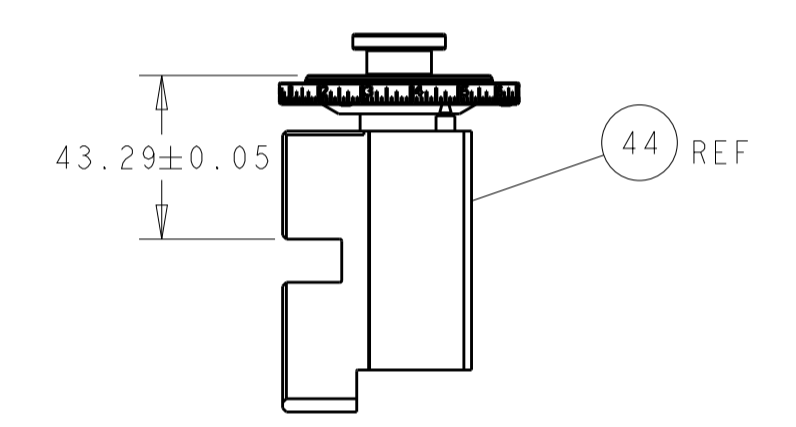
| | | | |
|------------------|-------------|-------------|--|
| CHK | R. KNEPPER | 30 JUL 2012 | TE Connectivity Harrisburg, PA 17105-3608 |
| CHK | G. BAILEY | 30 JUL 2012 | |
| APVD | M. CLIFFORD | 30 JUL 2012 | |
| NAME | | | Ocean Side Feed Applicator |
| PRODUCT SPEC | | | |
| APPLICATION SPEC | | | |
| SIZE | CAGE CODE | DRAWING NO | RESTRICTED TO |
| A1 | 00779 | 2151711 | |
| SCALE | | | SHEET 1 OF 4 |
| REV | | | D |

| LOC | | DIST | | REVISIONS | | | |
|-----|----|------|-----|-------------|------|-----|------|
| A | 66 | P | LTN | DESCRIPTION | DATE | DWN | APVD |
| | | - | | SEE SHEET 1 | | | |

FEED TYPE PNEUMATIC

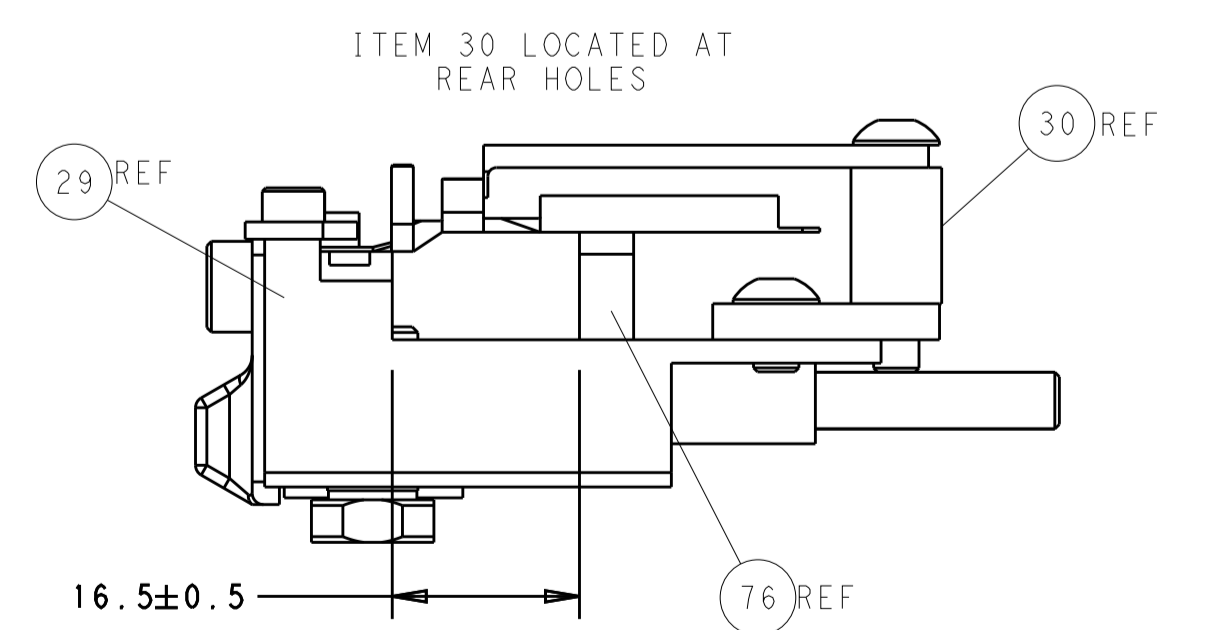
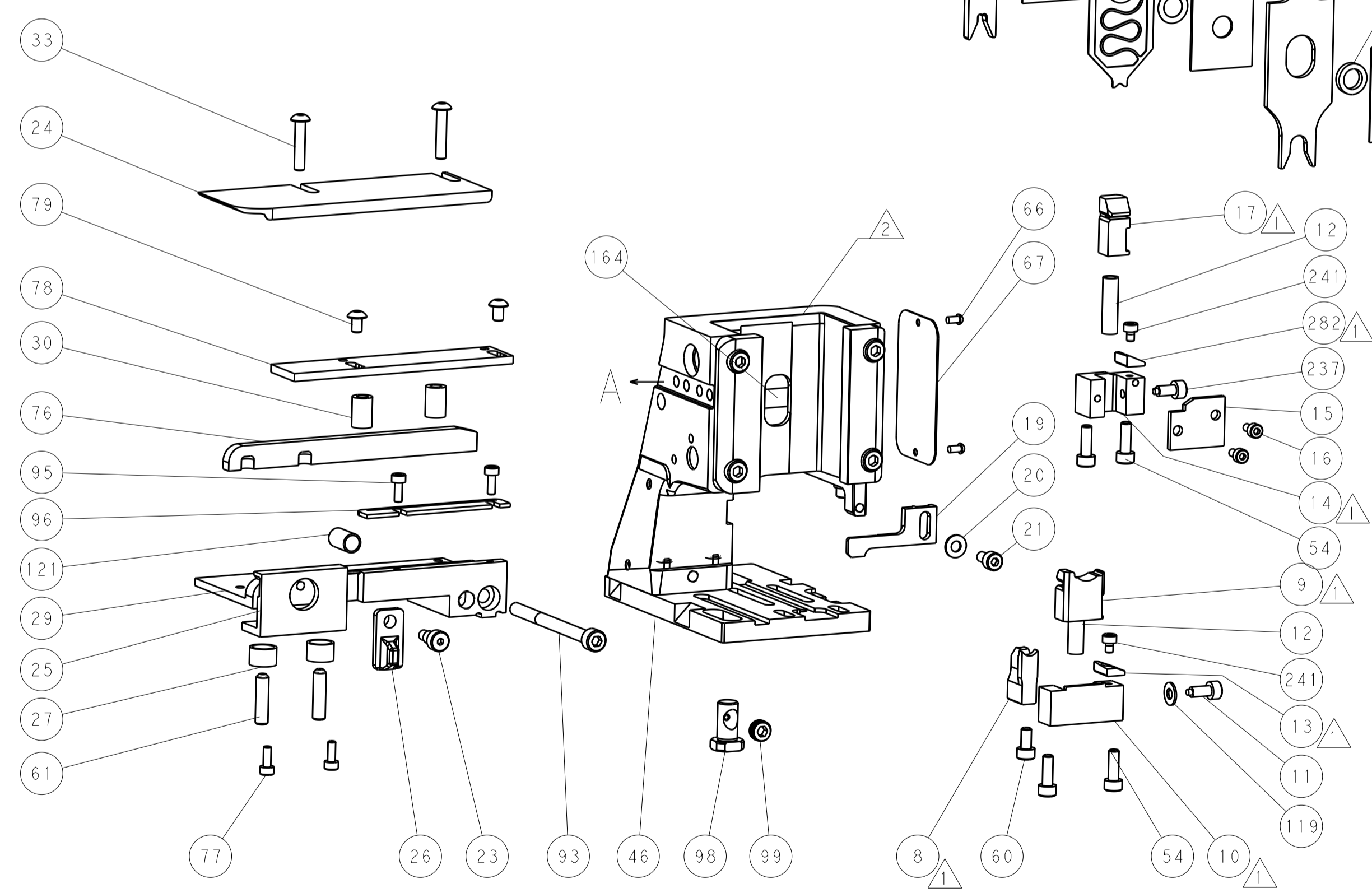
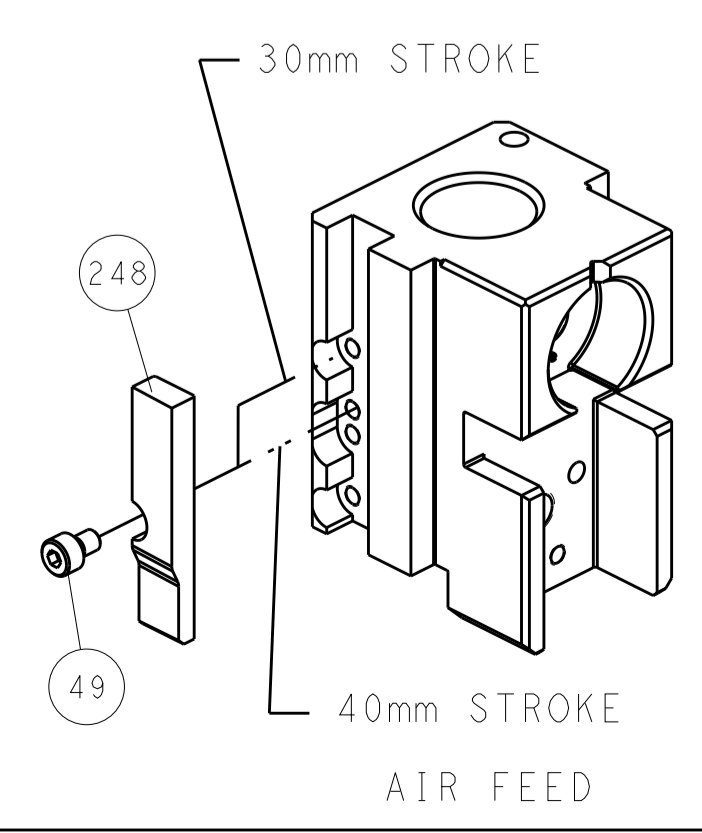


SHEAR DEPRESSOR DETAIL



HOLDDOWN SET-UP

CAM POSITION



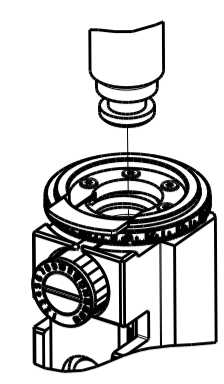
FEED TRACK POSITION
GUIDE BY WIRE BARREL

ATLANTIC VERSION
 Shown on sheets 1 of 4 & 2 of 4
 (Pacific version shown on sheets 3 of 4 & 4 of 4)

| | | | | | | | |
|--|----------|--|---------|----------------------------|---------|---------------------------|---------------------------|
| DIMENSIONS: | | TOLERANCES UNLESS OTHERWISE SPECIFIED: | | DWN R. KNEPPER 30JUL2012 | | TE Connectivity | |
| mm | 0 PLC ± | 1 PLC ± | 2 PLC ± | 3 PLC ± | 4 PLC ± | 5 PLC ± | Harrisburg, PA 17105-3608 |
| | ANGLES ± | | | CHK G. BAILEY 30JUL2012 | | NAME Ocean Side Feed | |
| | | | | APVD M. CLIFFORD 30JUL2012 | | Applicator | |
| MATERIAL | FINISH | | | PRODUCT SPEC | | RESTRICTED TO | |
| | | | | APPLICATION SPEC | | SIZE CAGE CODE DRAWING NO | |
| | | | | WEIGHT | | A1 00779 C=2151711 | |
| Customer Accessible Production Drawing | | | | SCALE 1:2 | | SHEET 2 OF 4 REV D | |

| PART NUMBER | REVISION | DESCRIPTION | FEED TYPE |
|-------------|----------|--------------------------|-----------|
| 2-2151711-2 | D | FINE CRIMP HEIGHT ADJUST | PNEUMATIC |
| 7-2151711-7 | A | CRIMP TOOLING KIT | - |

PACIFIC VERSION TERMINATOR
 INTERFACE ADAPTER

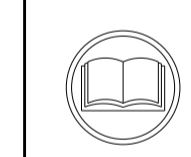


| APPLICATOR DATA | | |
|-----------------|----------------|------|
| CRIMP | SIZE | TYPE |
| WIRE | 3.63 mm [1.43] | F |
| INSUL | 7.20 mm [2.83] | O |

APPLICATOR INSTRUCTIONS
 408-35042

| TERMINAL DATA: DELPHI PACKARD TERMINAL & CRIMP SPECIFICATION | | | |
|--|-------------------------------|-----------|---------------------|
| TERMINAL NAME: MALE METRI-PACK 480 | | | |
| WIRE STRIP LENGTH | INSULATION DIAMETER RANGE | | |
| 5.20-6.00 mm [1.205-.236 IN] | Ø3.49-5.24 mm [1.137-.206 IN] | | |
| TERMINAL APPLICATION SPECIFICATION | DELPHI PACKARD | | |
| TERMINALS APPLIED | | | |
| TE TERMINAL | DELPHI PACKARD TERMINAL | TE SEAL | DELPHI PACKARD SEAL |
| 1572019-1 | 12052172 | 1572026-1 | 15324989 |

| WIRE SIZE | CRIMP HEIGHT mm [INCH] | CRIMP HEIGHT REFERENCE SETTING |
|-----------|--------------------------------|--------------------------------|
| 5.00mm2 | 2.25 +/- 0.05 [1.089 +/- .002] | 8.5 |



- △ RECOMMENDED SPARE PARTS
- △ REFER TO SUPPLIED INSTRUCTION SHEET FOR CLEANING, LUBRICATION AND STORAGE OF APPLICATOR.
- △ APPLY PART NUMBER 2-23419-6 LOCTITE TO THREADS OF ITEM 242.
- △ CRIMP HEIGHT REFERENCE SETTING WAS THE SETTING USED WHEN THE APPLICATOR WAS QUALIFIED AT THE FACTORY. ADJUSTMENT MAY BE NECESSARY WHEN RUNNING APPLICATOR IN THE FIELD.
- △ TERMINAL PITCH IS NOT COMPATIBLE WITH MECHANICAL FEED.
- △ APPLY TORQ-SEAL IN ALLEN SOCKET TO FILL HOLE AFTER FLAT HD HAS BEEN ADJUSTED TO CORRECT HEIGHT AT QUALIFICATION. APPLY #1-23419-5 LOC-TITE TO THREADS.
- 7. UNLESS SPECIFIED OTHERWISE TORQUE VALUES SHALL BE USED PER DOCUMENT, 101-35000.

***WARNING**
 ON INSTALLATION, SET WIRE DISC TO CRIMP HEIGHT REFERENCE SETTING FOR LARGEST WIRE SIZE. CRIMP HEIGHT REFERENCE SETTINGS GREATER THAN THE VALUE SHOWN MAY CAUSE DAMAGE TO THE CRIMP TOOLING, REFER TO THE INSTRUCTION SHEET FOR PROPER SETUP AND ADJUSTMENTS.

| QTY | REV | PART NO | DESCRIPTION | ITEM NO |
|-----|-----|-----------|---------------|---------|
| 1 | - | 2280441-1 | INSERT, SHEAR | 282 |
| -77 | -22 | PART NO | DESCRIPTION | ITEM NO |

PACIFIC VERSION
 Shown on sheets 3 of 4 & 4 of 4
 (Atlantic version shown on sheets 1 of 4 & 2 of 4)

| LOC | DIST | REVISIONS | | | |
|-----|------|-------------|------|----|------|
| A | 66 | REV | DATE | BY | APPV |
| - | - | SEE SHEET 1 | - | - | - |

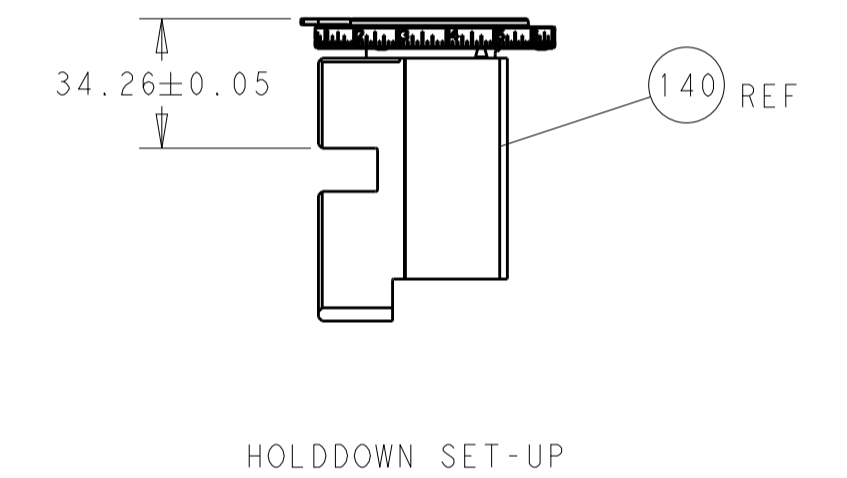
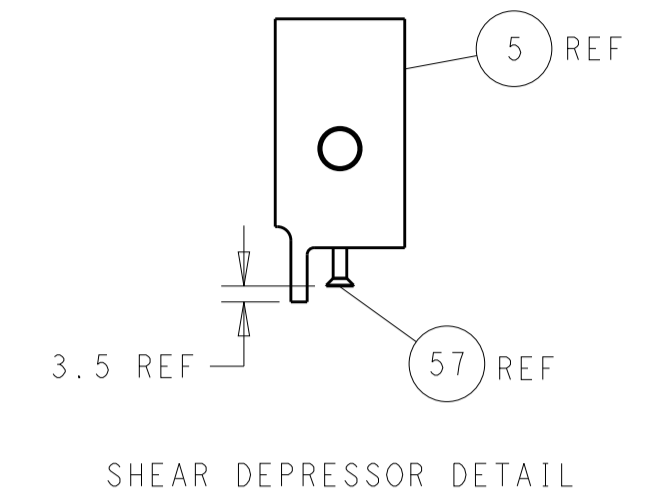
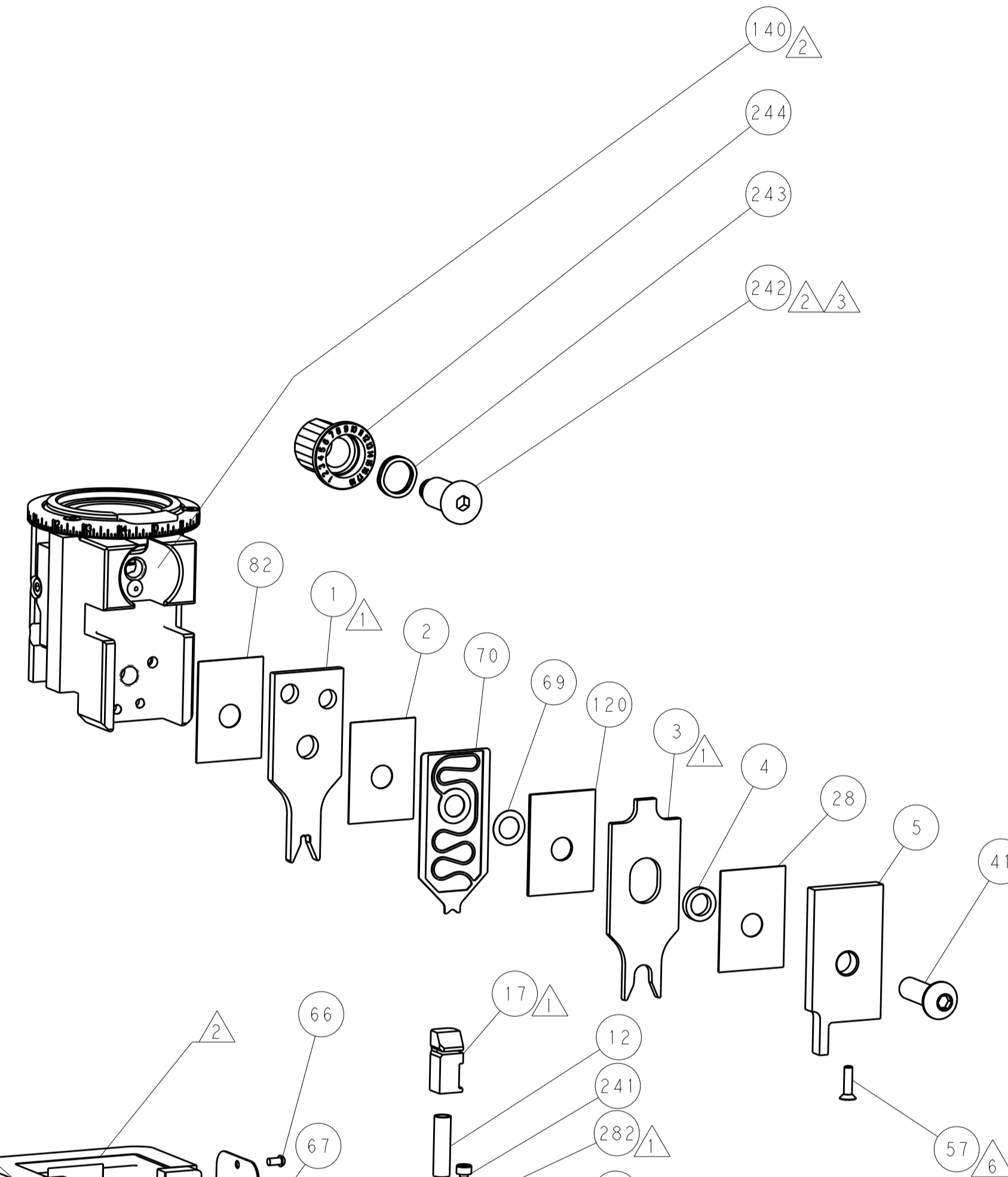
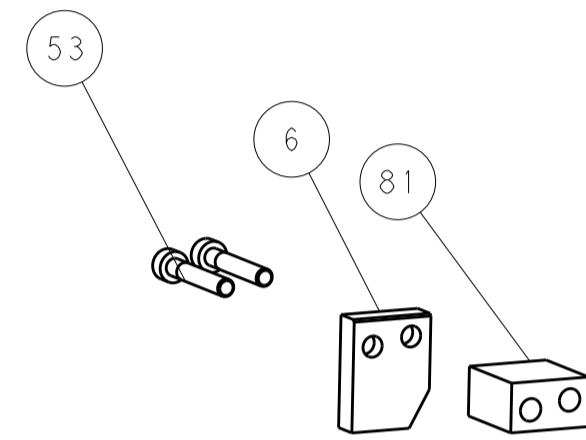
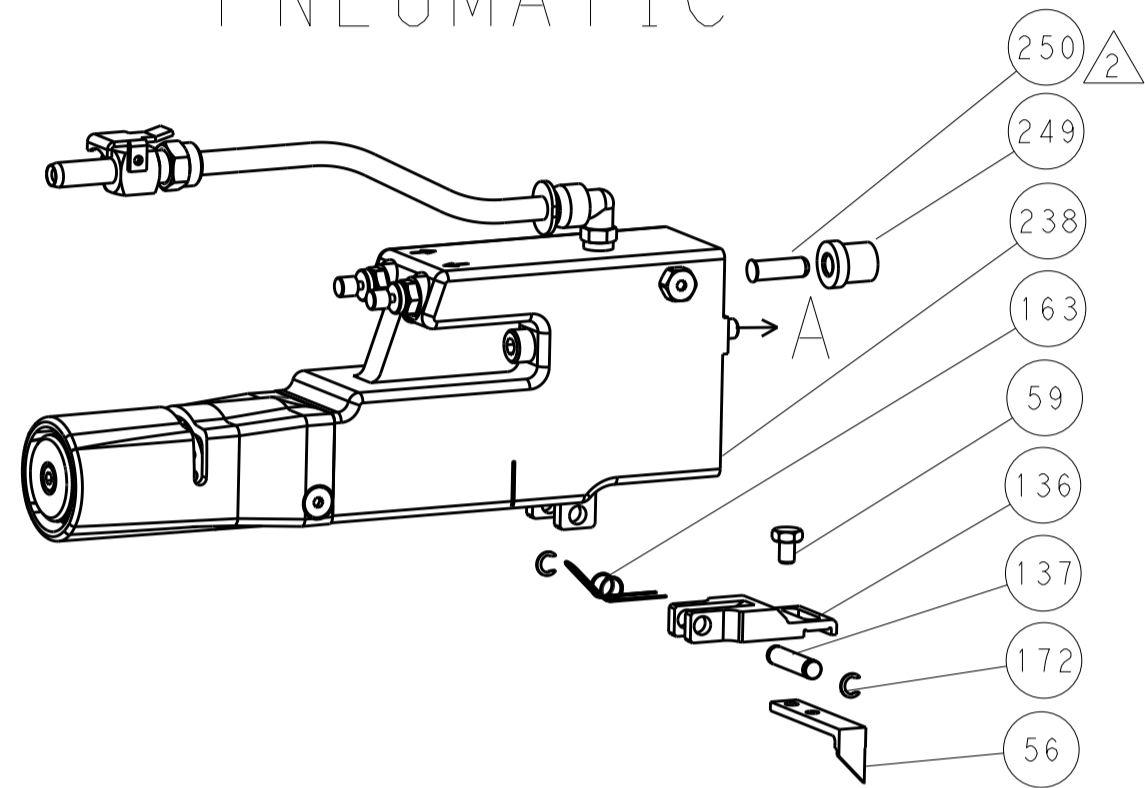
| | | | | |
|-----|-----|-------------|-------------------------------------|---------|
| - | 1 | 2119640-1 | PUSH ROD, AIR FEED | 250 |
| - | 1 | 1803259-1 | BUSHING, FLANGED | 249 |
| - | 1 | 2119082-2 | CAM, SNAIL, INSULATION ADJUSTMENT | 244 |
| - | 1 | 2079764-1 | WASHER, WAVE SPRING, CREST-TO-CREST | 243 |
| △ | 1 | 2119083-1 | RETAINER, INSULATION DIAL | 242 |
| - | 2 | 7-18023-7 | SCR, SKT HD CAP M3 X 4.0 | 241 |
| - | 1 | 2063440-1 | AIR FEED MODULE | 238 |
| - | 1 | 356885-4 | STOP, SHEAR | 237 |
| - | 2 | 21045-3 | RING, RETAIN, EXTERN, 3/16 CRESCENT | 172 |
| - | REF | 994970-2 | COUNTER, MAGNETIC | 164 |
| - | 1 | 240638-1 | SPRING, FEED FINGER | 163 |
| - | 1 | 2119641-2 | FEED CAM, AIR FEED | 151 |
| - | 1 | 2168083-8 | SCR, SKT HD CAP, RoHS, M4 X 16 | 144 |
| - | 4 | 2168083-9 | SCR, SKT HD CAP, RoHS, M4 X 20 | 143 |
| - | 1 | 1803583-4 | APPLICATOR BASIC ASSEMBLY, SF | 141 |
| - | 1 | 1803516-1 | RAM ASSEMBLY, SF PACIFIC | 140 |
| - | 1 | 3-23627-7 | PIN, RETAIN, GRVD, 3/16 X .854 | 137 |
| - | 1 | 2119799-1 | HOLDER, FEED FINGER, AF | 136 |
| - | 1 | 1-22281-8 | SPRING, COMPRESSION | 121 |
| - | 1 | 455888-9 | SPACER, CRIMPER | 120 |
| - | 1 | 1-18028-2 | WASHER, FLAT, REG M4 | 119 |
| - | 1 | 2844908-1 | SCREW, LOCKING | 99 |
| - | 1 | 2844907-1 | POST, LOCKING | 98 |
| - | 1 | 1-690438-0 | FRONT STRIP GUIDE | 96 |
| - | 2 | 2168083-1 | SCR, SKT HD CAP, RoHS, M3 X 8.0 | 95 |
| - | 1 | 2168083-6 | SCR, SKT HD CAP, RoHS, M5 X 65 | 93 |
| - | 1 | 455888-4 | SPACER, CRIMPER | 82 |
| - | 1 | 8-240641-1 | SPACER | 81 |
| - | 2 | 1-2079383-8 | SCR, BHSC, RoHS (M4 X 6) | 79 |
| - | 1 | 1803096-1 | EXTENSION PLATE | 78 |
| - | 2 | 2168083-1 | SCR, SKT HD CAP, RoHS, M3 X 8.0 | 77 |
| - | 1 | 1633782-6 | FENCE | 76 |
| - | 1 | 1803607-1 | DOCUMENTATION PACKAGE | 71 |
| - | 1 | 2119791-5 | DEPRESSOR, WIRE | 70 |
| - | 1 | 2119943-1 | WASHER, SPACER | 69 |
| - | 1 | 2119740-1 | TAG IDENTIFICATION | 67 |
| - | 2 | 2168078-1 | SCREW, DRIVE, RH, RoHS, 2 x .188 | 66 |
| - | 2 | 2-18032-5 | SCR, SET, FLT PNT, M5 X 20.0 | 61 |
| - | 1 | 5-18022-5 | SCR, HEX HD CAP, M4 X 6.0 | 59 |
| △ | 1 | 985575-4 | SCR, FLT SKT HD CAP M3 X 12.0 | 57 |
| - | 1 | 1338685-1 | PAWL, FEED | 56 |
| - | 2 | 1-2168083-2 | SCR, SKT HD CAP, RoHS, M4 X 25 | 53 |
| - | 1 | 18023-9 | SCR, SKT HD CAP M4 X 6.0 | 49 |
| - | 1 | 1803602-1 | SCR, BHSC, RoHS (M8 X 25) | 41 |
| - | 2 | 2079383-5 | SCR, BHSC, RoHS (M4 X 20) | 33 |
| - | 2 | 1-2844962-7 | SPACER, CYLINDRICAL, STRIP GUIDE | 30 |
| - | 1 | 1-2844938-7 | PLATE, STRIP GUIDE | 29 |
| - | 1 | 455888-4 | SPACER, CRIMPER | 28 |
| - | 2 | 22283-1 | SPRING, COMPRESSION | 27 |
| - | 1 | 356835-1 | LEVER, DRAG RELEASE | 26 |
| - | 1 | 240792-1 | DRAG, TERMINAL | 25 |
| - | 1 | 1-1320928-5 | STRIP GUIDE | 24 |
| - | 1 | 980371-4 | SCR, SKT HD SHLDR 5.0 DIA X 6.0 | 23 |
| - | 1 | 2168083-2 | SCR, SKT HD CAP, RoHS, M4 X 8.0 | 21 |
| - | 1 | 1-18028-2 | WASHER, FLAT, REG M4 | 20 |
| - | 1 | 2119533-1 | STRIPPER, SIDE FEED | 19 |
| △ | 1 | 690463-1 | FLOATING SHEAR, REAR | 17 |
| - | 2 | 1-2168083-1 | SCR, SKT HD CAP, RoHS, M3 X 6 | 16 |
| - | 1 | 1-690464-6 | SHEAR PLATE, REAR | 15 |
| △ | 1 | 2119862-1 | SHEAR HOLDER, REAR | 14 |
| △ | 1 | 2119806-1 | INSERT, SHEAR | 13 |
| - | 2 | 3-22280-3 | SPRING, COMPRESSION | 12 |
| - | 1 | 1-356885-4 | STOP, SHEAR | 11 |
| △ | 1 | 2119805-2 | SHEAR HOLDER, FRONT | 10 |
| △ | 1 | 318059-4 | FLOATING SHEAR, FRONT | 9 |
| △ | 1 | 1633930-8 | ANVIL, COMBINATION | 8 |
| - | - | - | - | 7 |
| - | 1 | 1-690468-7 | DEPRESSOR SHEAR, REAR | 6 |
| - | 1 | 2-2119781-2 | DEPRESSOR, SHEAR | 5 |
| - | 1 | 238011-4 | BLOCK, CRIMPER SPACER | 4 |
| △ | 1 | 1803019-9 | CRIMPER, INSULATION O | 3 |
| - | 1 | 455888-3 | SPACER, CRIMPER | 2 |
| △ | 1 | 4-1633730-2 | CRIMPER, WIRE | 1 |
| -77 | -22 | PART NO | DESCRIPTION | ITEM NO |

| | | | | | |
|--|--|---|--|--|--|
| DIMENSIONS: mm | | TOLERANCES UNLESS OTHERWISE SPECIFIED: 0 PLC ± 1 PLC ± 2 PLC ± 3 PLC ± 4 PLC ± ANGLES ± FINISH | | DWN DR. KNEPPER 30JUL2012 CHK G. BAILEY 30JUL2012 APVD M. CLIFFORD 30JUL2012 PRODUCT SPEC APPLICATION SPEC WEIGHT SCALE 1:2 SHEET 3 OF 4 REV D | |
| MATERIAL: | | NAME: Ocean Side Feed Applicator | | SIZE: A1 00779 ©=2151711 | |
| CUSTOMER ACCESSIBLE PRODUCTION DRAWING | | SHEETS 1 & 2 ARE NOT REQUIRED FOR PACIFIC VERSION | | | |

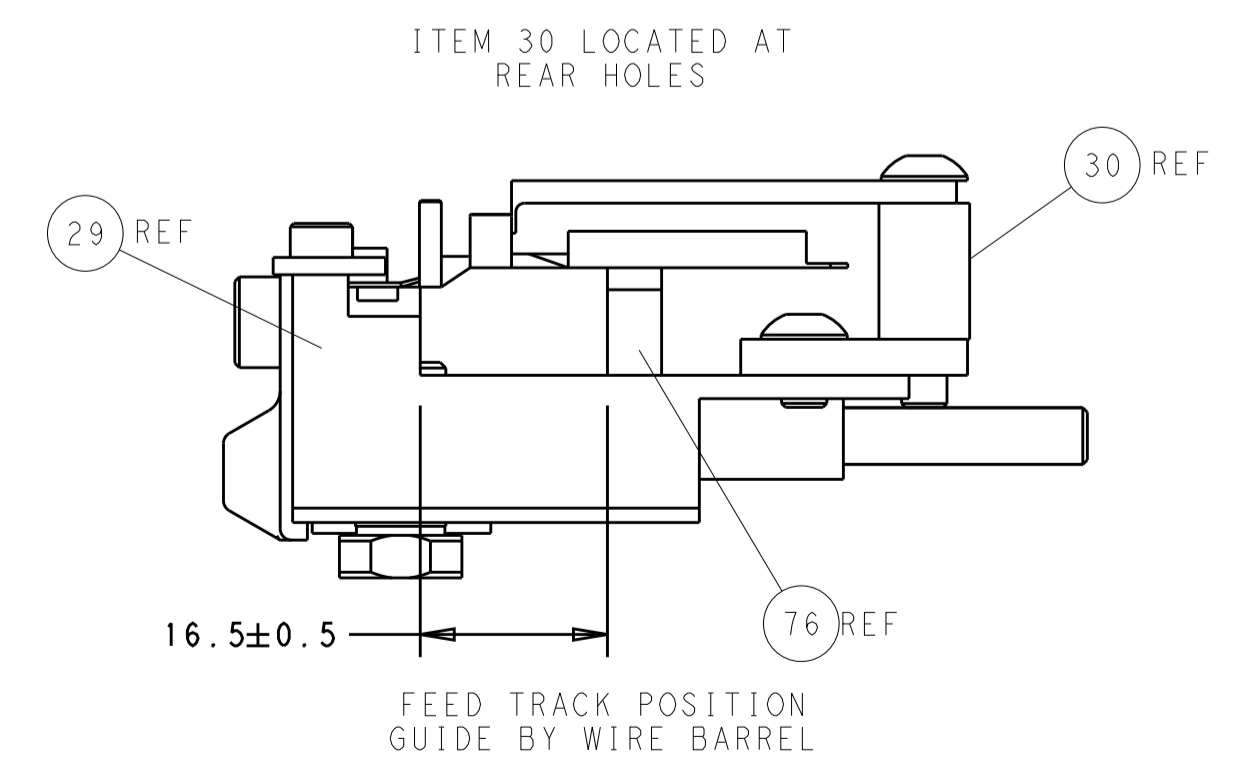
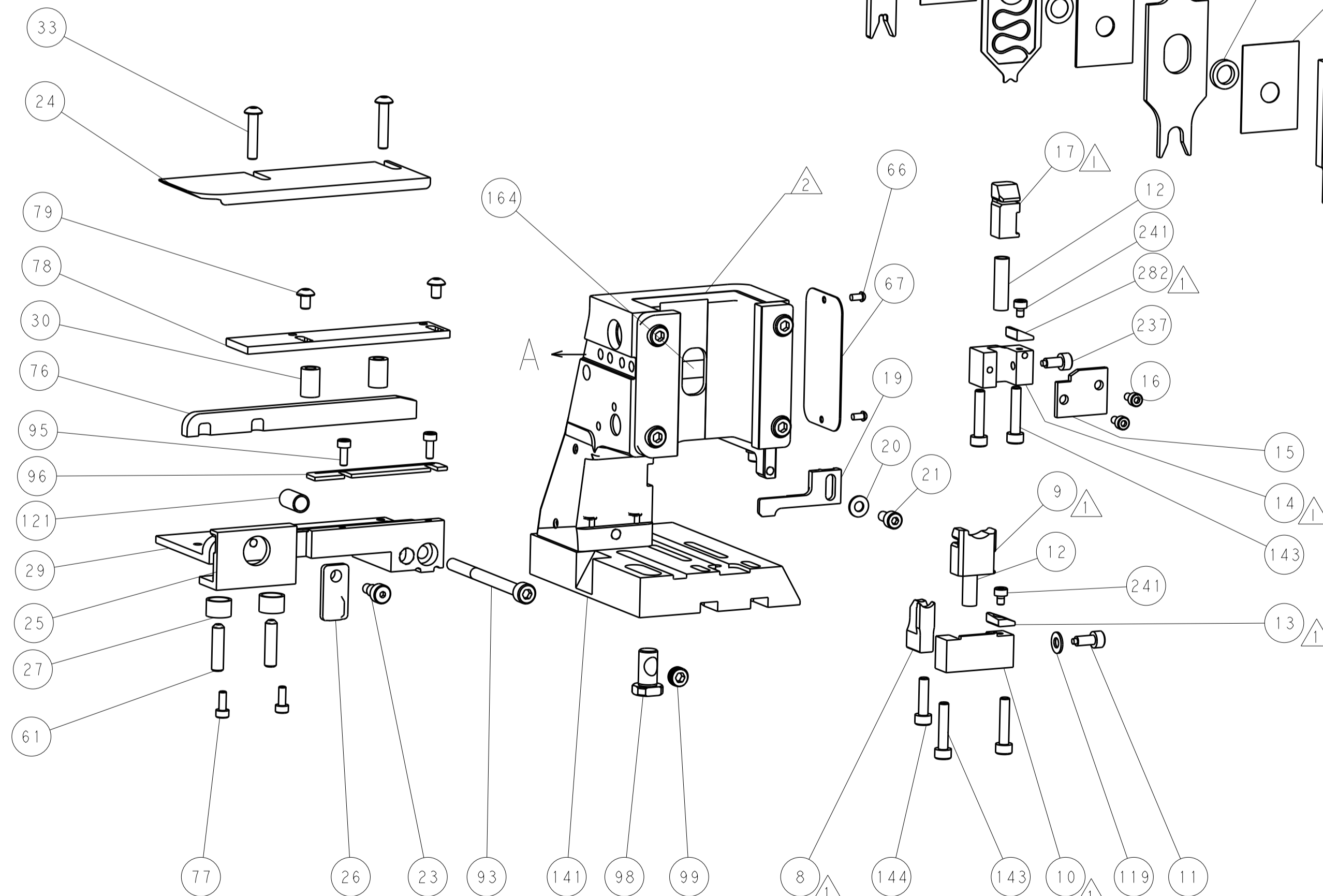
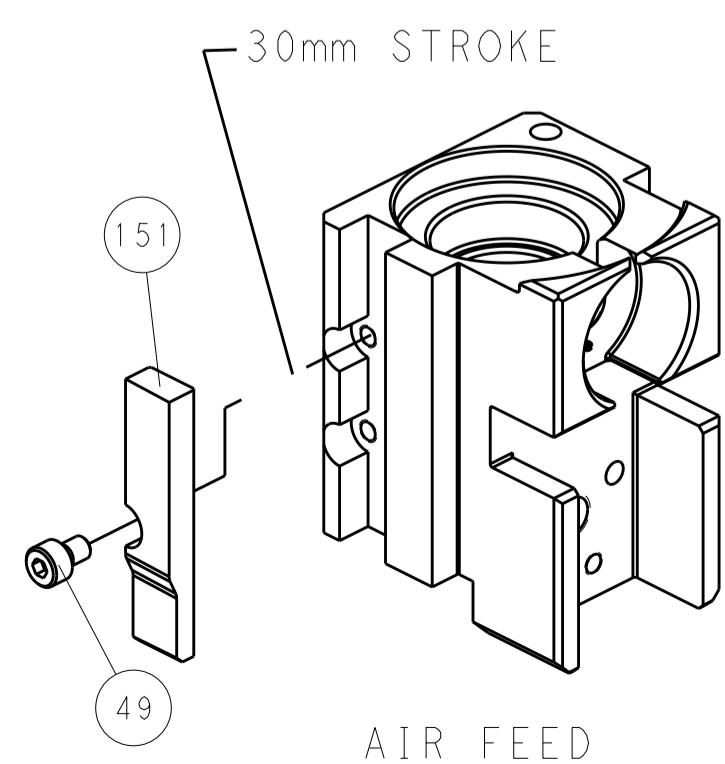
| LOC | DIST | REV | DATE | BY | APPV |
|-----|------|-----|------|----|------|
| A | 66 | | | | |

| REVISIONS | | | |
|-----------|------|-------------|----|
| REV | DATE | DESCRIPTION | BY |
| - | - | SEE SHEET 1 | - |

FEED TYPE PNEUMATIC



CAM POSITION



PACIFIC VERSION
 Shown on sheets 3 of 4 & 4 of 4
 (Atlantic version shown on sheets 1 of 4 & 2 of 4)

| | | | | | | | |
|--|---------|--|---------|-----------------------------|---|-----------------|---------------------------|
| DIMENSIONS: | | TOLERANCES UNLESS OTHERWISE SPECIFIED: | | DWG: R. KNEPPER 30JUL2012 | | TE Connectivity | |
| mm | 0 PLC ± | 1 PLC ± | 2 PLC ± | 3 PLC ± | 4 PLC ± | 5 PLC ± | Harrisburg, PA 17105-3608 |
| | ANGLES | FINISH | | CHK: G. BAILEY 30JUL2012 | NAME: Ocean Side Feed Applicator | | RESTRICTED TO |
| MATERIAL: | | | | APPV: M. CLIFFORD 30JUL2012 | SIZE: CAGE CODE: DRAWING NO: A1 00779 ©=2151711 | | |
| Customer Accessible Production Drawing | | | | SCALE: 1:2 | SHEET: 4 | OF: 4 | REV: D |