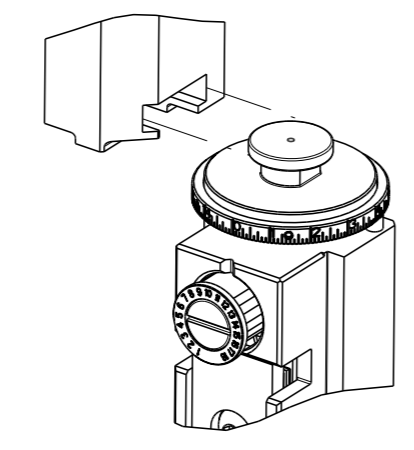


THIS DRAWING IS UNPUBLISHED. RELEASED FOR PUBLICATION 20  
 COPYRIGHT © BY TYCO ELECTRONICS CORPORATION. ALL RIGHTS RESERVED.

| PART NUMBER | REVISION | DESCRIPTION                            | FEED TYPE  |
|-------------|----------|--|------------|
| 2151484-1   | H        | FINE CRIMP HEIGHT ADJUST               | MECHANICAL |
| 2151484-2   | H        | FINE CRIMP HEIGHT ADJUST               | PNEUMATIC  |
| 5-2151484-1 | H        | SEAL STRIPPER CRIMPER TERMINATING UNIT | MECHANICAL |
| 5-2151484-2 | H        | SEAL STRIPPER CRIMPER TERMINATING UNIT | PNEUMATIC  |
| 7-2151484-1 | H        | MECHANICAL AND CRIMP TOOLING KIT       | MECHANICAL |
| 7-2151484-2 | H        | PNEUMATIC AND CRIMP TOOLING KIT        | PNEUMATIC  |
| 7-2151484-7 | A        | CRIMP TOOLING KIT                      | -          |

ATLANTIC VERSION TERMINATOR INTERFACE ADAPTER



| APPLICATOR DATA |                |      |
|-----------------|----------------|------|
| CRIMP           | SIZE           | TYPE |
| WIRE            | 1.57 mm [.062] | F    |
| INSUL           | 3.94 mm [.155] | O    |

APPLICATOR INSTRUCTIONS 408-35042

| TERMINAL DATA: TE TERMINAL                       |             | TE CRIMP SPECIFICATION       |          |
|--|-------------|------------------------------|----------|
| TERMINAL NAME: AMP MCP 2.8K FLAT TYPE RECEPTACLE |             |                              |          |
| WIRE STRIP LENGTH                                |             | INSULATION DIAMETER RANGE    |          |
| 3.40-4.00 mm [.134-.157 IN]                      |             | ∅1.10-1.40 mm [.043-.055 IN] |          |
| TERMINAL APPLICATION SPECIFICATION               | 114-18387   |                              |          |
| TERMINALS APPLIED                                |             |                              |          |
| TE TERMINAL                                      | TE TERMINAL | TE SEAL                      | TE SEAL  |
| 1564984-1  | 1564984-3   |                              | 963294-1 |
| 1564984-2  |             |                              |          |

| WIRE SIZE | CRIMP HEIGHT mm [INCH]     | CRIMP HEIGHT REFERENCE SETTING |
|-----------|----------------------------|--------------------------------|
| 0.35mm2   | 1.11+/-0.03 [.044+/-0.001] | 5.8                            |
| 0.22mm2   | 1.05+/-0.03 [.041+/-0.001] | 6.6                            |

- 1 RECOMMENDED SPARE PARTS
  - 2 REFER TO SUPPLIED INSTRUCTION SHEET FOR CLEANING, LUBRICATION & STORAGE OF APPLICATOR.
  - 3 APPLY PART NUMBER 1-23419-5 LOCTITE TO THREADS OF ITEM 180. APPLY PART NUMBER 2-23419-6 LOCTITE TO THREADS OF ITEM 242.
  - 4 CRIMP HEIGHT REFERENCE SETTING WAS THE SETTING USED WHEN THE APPLICATOR WAS QUALIFIED AT THE FACTORY. ADJUSTMENT MAY BE NECESSARY WHEN RUNNING APPLICATOR IN THE FIELD
  - 5 APPLY TORO-SEAL IN ALLEN SOCKET TO FILL HOLE AFTER FLAT HD HAS BEEN ADJUSTED TO CORRECT HEIGHT AT QUALIFICATION. APPLY #1-23419-5 LOC-TITE TO THREADS.
  - 6 TERMINAL LUBRICANT IS RECOMMENDED.
7. UNLESS SPECIFIED OTHERWISE TORQUE VALUES SHALL BE USED PER DOCUMENT, 101-35000.

**\*WARNING**  
 ON INSTALLATION, SET WIRE DISC TO CRIMP HEIGHT REFERENCE SETTING FOR LARGEST WIRE SIZE. CRIMP HEIGHT REFERENCE SETTINGS GREATER THAN THE VALUE SHOWN MAY CAUSE DAMAGE TO THE CRIMP TOOLING, REFER TO THE INSTRUCTION SHEET FOR PROPER SETUP AND ADJUSTMENTS.

ATLANTIC VERSION  
 Shown on sheets 1 of 4 & 2 of 4  
 (Pacific version shown on sheets 3 of 4 & 4 of 4)

| LOC | DIST | REVISIONS |     |               |           |     |      |
|-----|------|-----------|-----|---------------|-----------|-----|------|
| A   | 66   | #         | LY# | DESCRIPTION   | DATE      | OWN | APVD |
|     |      | E         |     | ECR-18-013347 | 23AUG2018 | YY  | CT   |
|     |      | F         |     | ECR-19-005619 | 08APR2019 | FJ  | TE   |
|     |      | G         |     | ECR-19-013377 | 26AUG2019 | TB  | RK   |
|     |      | H         |     | ECR-20-004248 | 20MAR2020 | MEH | TE   |

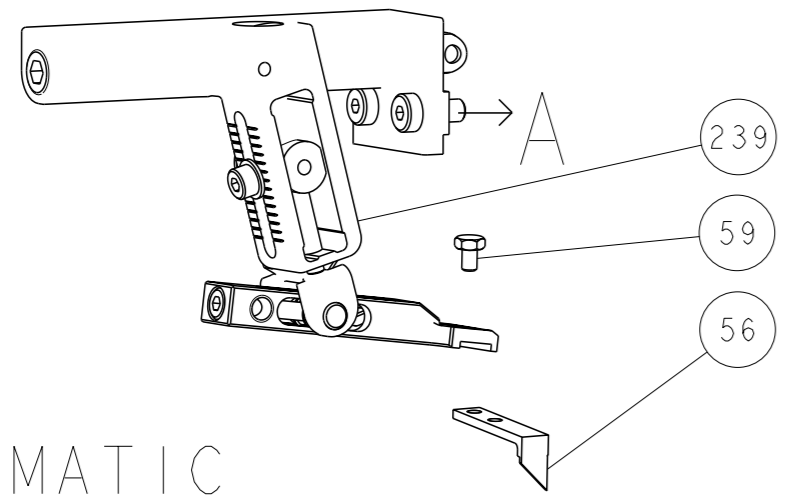
|   |     |     |     |     |     |     |             |                                     |     |
|---|-----|-----|-----|-----|-----|-----|-------------|-------------------------------------|-----|
| - | -   | -   | 1   | 1   | -   | -   | 1803515-3   | RAM ASSEMBLY, SF ATLANTIC           | 293 |
| - | -   | -   | 1   | 1   | -   | -   | 2-1803583-1 | APPLICATOR BASIC ASSEMBLY, SF       | 292 |
| - | 1   | -   | 1   | -   | 1   | -   | 2119641-1   | FEED CAM, AIR FEED                  | 248 |
| - | 1   | 1   | 1   | 1   | 1   | 1   | 2119082-2   | CAM, SNAIL, INSULATION ADJUSTMENT   | 244 |
| - | 1   | 1   | 1   | 1   | 1   | 1   | 2079764-1   | WASHER, WAVE SPRING, CREST-TO-CREST | 243 |
| - | 1   | 1   | 1   | 1   | 1   | 1   | 2119083-1   | RETAINER, INSULATION DIAL           | 242 |
| - | 1   | 1   | 1   | 1   | 1   | 1   | 7-18023-7   | SCR, SKT HD CAP M3 X 4.0            | 241 |
| - | -   | 1   | -   | 1   | -   | 1   | 2119580-1   | MECHANICAL FEED ASSEMBLY            | 239 |
| - | 1   | -   | 1   | -   | 1   | -   | 2844940-1   | AIR FEED MODULE                     | 238 |
| - | -   | -   | 1   | 1   | -   | -   | 4-1722335-3 | STRIPPER, SIDE FEED                 | 182 |
| - | -   | -   | 1   | 1   | -   | -   | 1-5018030-0 | NUT, HEX, REG, RoHS, M3.5           | 181 |
| - | -   | -   | 1   | 1   | -   | -   | 2-1752354-6 | STANDOFF,HOLD-DOWN                  | 180 |
| - | -   | -   | 1   | 1   | -   | -   | 993111-1    | PIN, SLOTTED SPRING 3.0 X 20.0      | 177 |
| - | -   | -   | 1   | 1   | -   | -   | 5-22280-0   | SPRING, COMPRESSION                 | 176 |
| - | -   | -   | 1   | 1   | -   | -   | 1752353-3   | GUIDE PIN,HOLDDOWN                  | 175 |
| - | -   | -   | 1   | 1   | -   | -   | 1901680-2   | GUIDE PIN,HOLDDOWN                  | 174 |
| - | REF | REF | REF | REF | REF | REF | 994970-2    | COUNTER, MAGNETIC                   | 164 |
| - | 1   | 1   | 1   | 1   | 1   | 1   | 1-18028-2   | WASHER, FLAT, REG M4                | 119 |
| - | 1   | 1   | 1   | 1   | 1   | 1   | 2119955-1   | ASSY, LUBRICATOR, SIDE FEED         | 113 |
| - | 1   | 1   | 1   | 1   | 1   | 1   | 2844908-1   | SCREW, LOCKING                      | 99  |
| - | 1   | 1   | 1   | 1   | 1   | 1   | 2844907-1   | POST, LOCKING                       | 98  |
| - | 1   | 1   | 1   | 1   | 1   | 1   | 455888-4    | SPACER, CRIMPER                     | 82  |
| - | 1   | 1   | 1   | 1   | 1   | 1   | 1803607-3   | DOCUMENTATION PACKAGE               | 71  |
| - | 1   | 1   | 1   | 1   | 1   | 1   | 2119740-1   | TAG, IDENTIFICATION                 | 67  |
| - | 2   | 2   | 2   | 2   | 2   | 2   | 2168078-1   | SCREW, DRIVE, RH, RoHS, 2 x .188    | 66  |
| - | 1   | 1   | 1   | 1   | 1   | 1   | 2168083-2   | SCR, SKT HD CAP, RoHS, M4 X 8.0     | 60  |
| - | 1   | 1   | 1   | 1   | 1   | 1   | 5-18022-5   | SCR, HEX HD CAP, M4 X 6.0           | 59  |
| - | 1   | 1   | 1   | 1   | 1   | 1   | 985575-3    | SCR, FLT SKT HD CAP M3 X 10.0       | 57  |
| - | 1   | 1   | 1   | 1   | 1   | 1   | 1338685-1   | PAWL, FEED                          | 56  |
| - | 4   | 4   | 4   | 4   | 4   | 4   | 2168083-3   | SCR, SKT HD CAP, RoHS, M4 X 12.0    | 54  |
| - | 2   | 2   | 2   | 2   | 2   | 2   | 1-2168083-0 | SCR, SKT HD CAP, RoHS, M4 X 10      | 53  |
| - | 1   | 1   | 1   | 1   | 1   | 1   | 1803382-2   | HOLD DOWN, SPRING LOADED            | 50  |
| - | 1   | 2   | 1   | 2   | 1   | 2   | 18023-9     | SCR, SKT HD CAP M4 X 6.0            | 49  |
| - | -   | 1   | -   | 1   | -   | 1   | 2119652-1   | FEED CAM, PRE FEED                  | 48  |
| - | -   | 1   | -   | 1   | -   | 1   | 2119653-1   | FEED CAM, POST FEED                 | 47  |
| - | 1   | 1   | -   | -   | 1   | 1   | 1803583-9   | APPLICATOR BASIC ASSEMBLY, SF       | 46  |
| - | 1   | 1   | -   | -   | 1   | 1   | 1803515-1   | RAM ASSEMBLY, SF ATLANTIC           | 44  |
| - | 1   | 1   | 1   | 1   | 1   | 1   | 1803602-1   | SCR, BHSC, RoHS (M8 X 25)           | 41  |
| - | 1   | 1   | 1   | 1   | 1   | 1   | 1-1752356-7 | SUPPORT, TERMINAL                   | 34  |
| - | 2   | 2   | 2   | 2   | 2   | 2   | 2079383-5   | SCR, BHSC, RoHS (M4 X 20)           | 33  |
| - | 2   | 2   | 2   | 2   | 2   | 2   | 2-2844962-8 | SPACER, CYLINDRICAL, STRIP GUIDE    | 30  |
| - | 1   | 1   | 1   | 1   | 1   | 1   | 2844992-1   | ASSEMBLY, STRIP GUIDE               | 29  |
| - | 1   | 1   | 1   | 1   | 1   | 1   | 455888-4    | SPACER, CRIMPER                     | 28  |
| - | 1   | 1   | 1   | 1   | 1   | 1   | 1320928-2   | STRIP GUIDE                         | 24  |
| - | 1   | 1   | -   | -   | 1   | 1   | 2168083-2   | SCR, SKT HD CAP, RoHS, M4 X 8.0     | 21  |
| - | 2   | 2   | 1   | 1   | 2   | 2   | 1-18028-2   | WASHER, FLAT, REG M4                | 20  |
| - | 1   | 1   | -   | -   | 1   | 1   | 2119533-1   | STRIPPER, SIDE FEED                 | 19  |
| - | 1   | 1   | 1   | 1   | 1   | 1   | 2119806-1   | INSERT, SHEAR                       | 13  |
| - | 1   | 1   | 1   | 1   | 1   | 1   | 3-22280-3   | SPRING, COMPRESSION                 | 12  |
| - | 1   | 1   | 1   | 1   | 1   | 1   | 1-356885-4  | STOP, SHEAR                         | 11  |
| - | 1   | 1   | 1   | 1   | 1   | 1   | 2119805-1   | SHEAR HOLDER, FRONT                 | 10  |
| - | 1   | 1   | 1   | 1   | 1   | 1   | 318707-1    | FLOATING SHEAR, FRONT               | 9   |
| 1 | 2   | 2   | 1   | 1   | 1   | 1   | 3-1633129-7 | ANVIL, COMBINATION .062             | 8   |
| - | -   | -   | -   | -   | -   | -   | -           | -                                   | 7   |
| - | -   | -   | -   | -   | -   | -   | -           | -                                   | 6   |
| - | 1   | 1   | 1   | 1   | 1   | 1   | 2119781-1   | DEPRESSOR, SHEAR                    | 5   |
| - | 1   | 1   | 1   | 1   | 1   | 1   | 238011-4    | BLOCK, CRIMPER SPACER               | 4   |
| 1 | 2   | 2   | 1   | 1   | 1   | 1   | 2-2119784-9 | CRIMPER, INSULATION O PREMIUM       | 3   |
| - | 1   | 1   | 1   | 1   | 1   | 1   | 1-455888-1  | SPACER, CRIMPER                     | 2   |
| 1 | 2   | 2   | 1   | 1   | 1   | 1   | 1-456403-3  | CRIMPER, WIRE PREMIUM               | 1   |

| ITEM NO | PART NO | DESCRIPTION | ITEM NO     |
|---------|---------|-------------|-------------|
| -77     | -72     | -52         | -51         |
| -2      | -1      | PART NO     | DESCRIPTION |

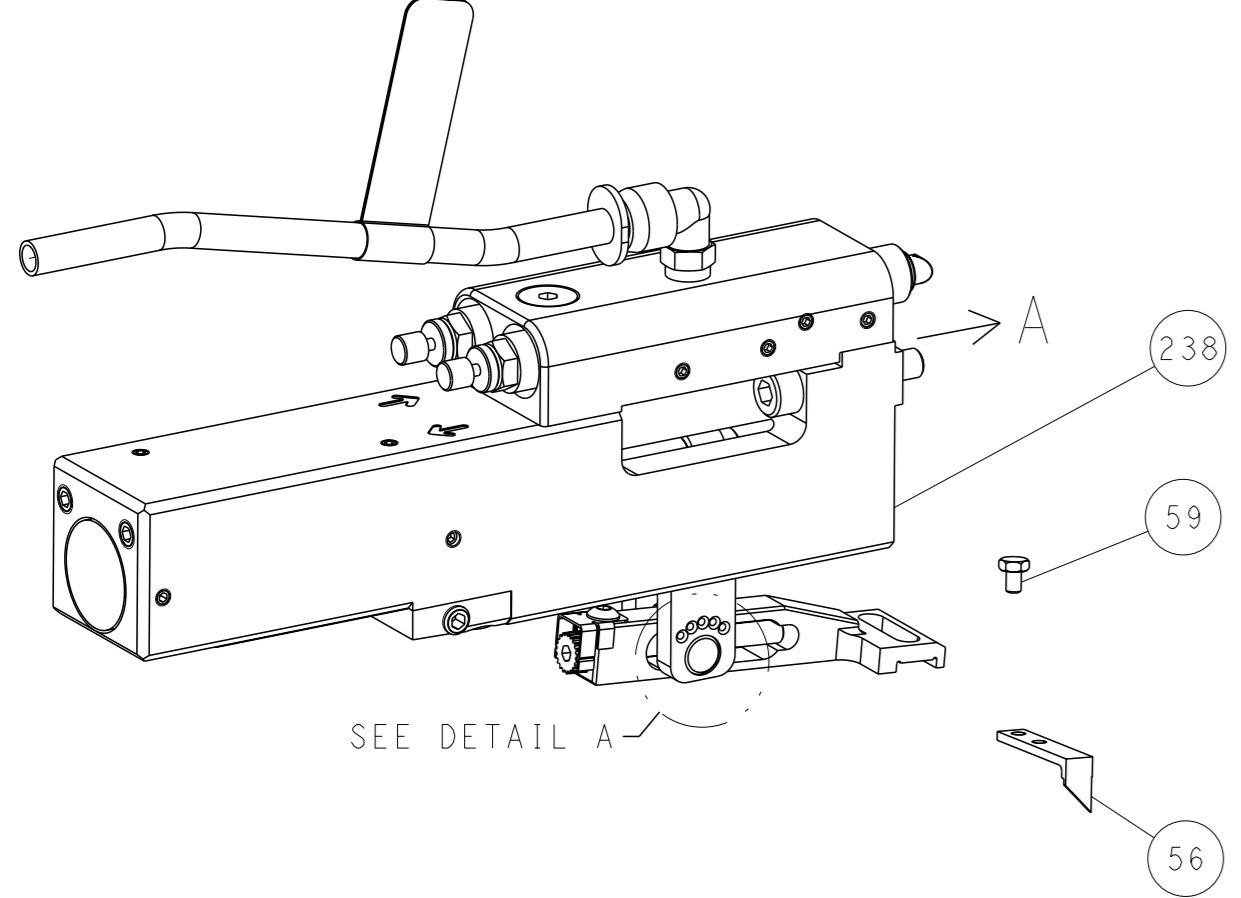
|  |           |              |
|--|-----------|--------------|
| OWN                                    | H. HUANG  | 12MAR2012    |
| CHK                                    | S. XI     | 12MAR2012    |
| APVD                                   | S. XI     | 12MAR2012    |
| PRODUCT SPEC                           |           |              |
| APPLICATION SPEC                       |           |              |
| SIZE                                   | CAGE CODE | DRAWING NO   |
| A1                                     | 00779     | 2151484      |
| Customer Accessible Production Drawing |           |              |
| SCALE                                  | 1:2       | SHEET 1 OF 4 |
| REV                                    | H         |              |

| LOC | DIST | REVISIONS   |      |     |      |
|-----|------|-------------|------|-----|------|
| A   | 66   | REV         | DATE | OWN | APVD |
| -   | -    | SEE SHEET 1 | -    | -   | -    |

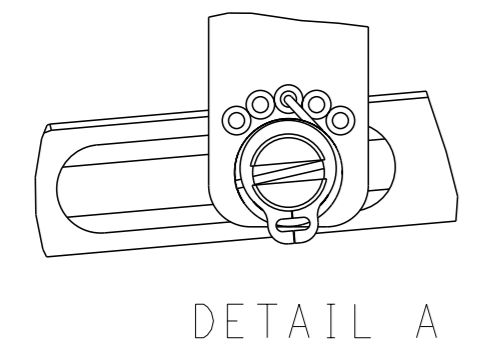
# FEED TYPE MECHANICAL



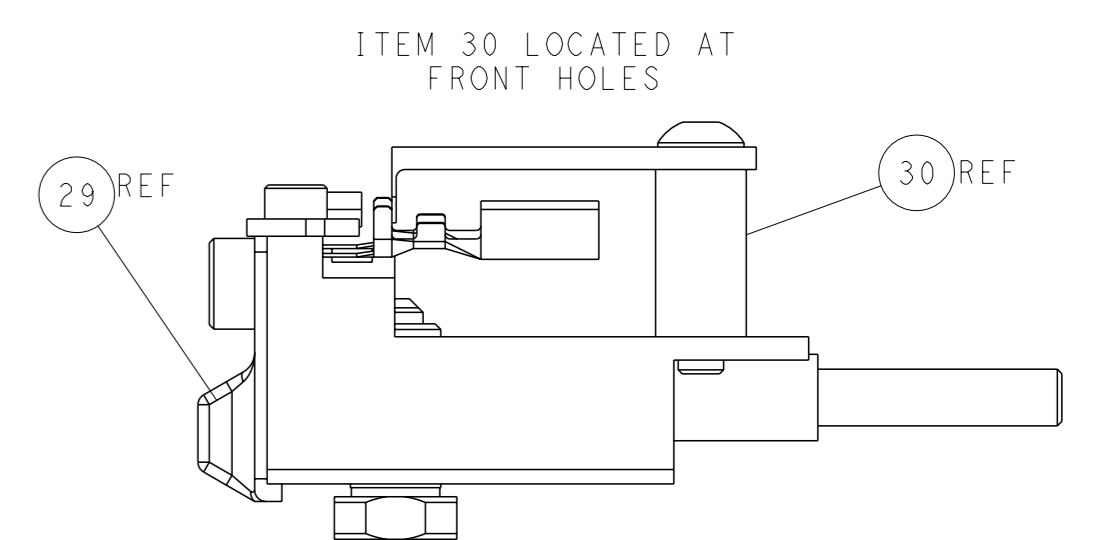
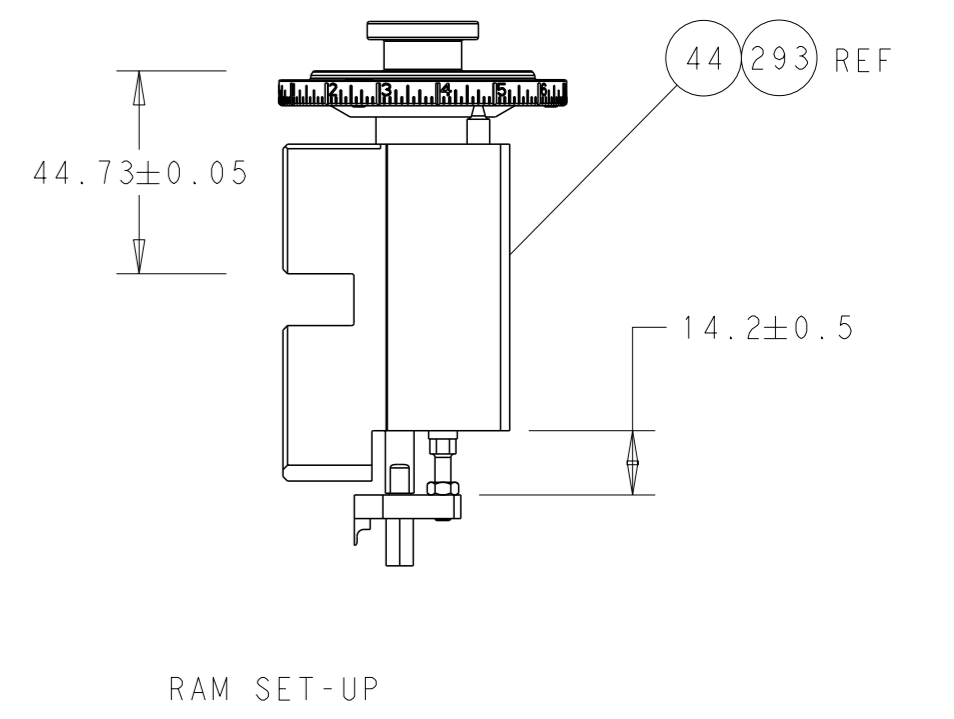
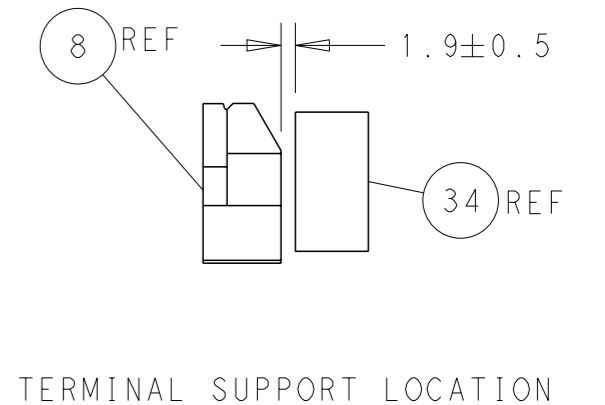
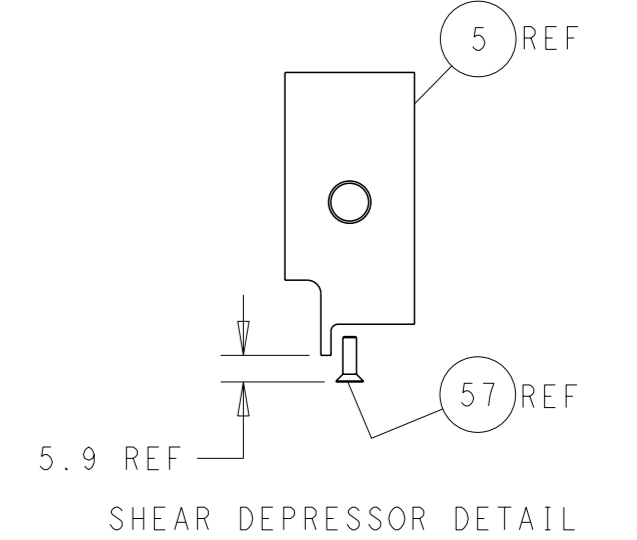
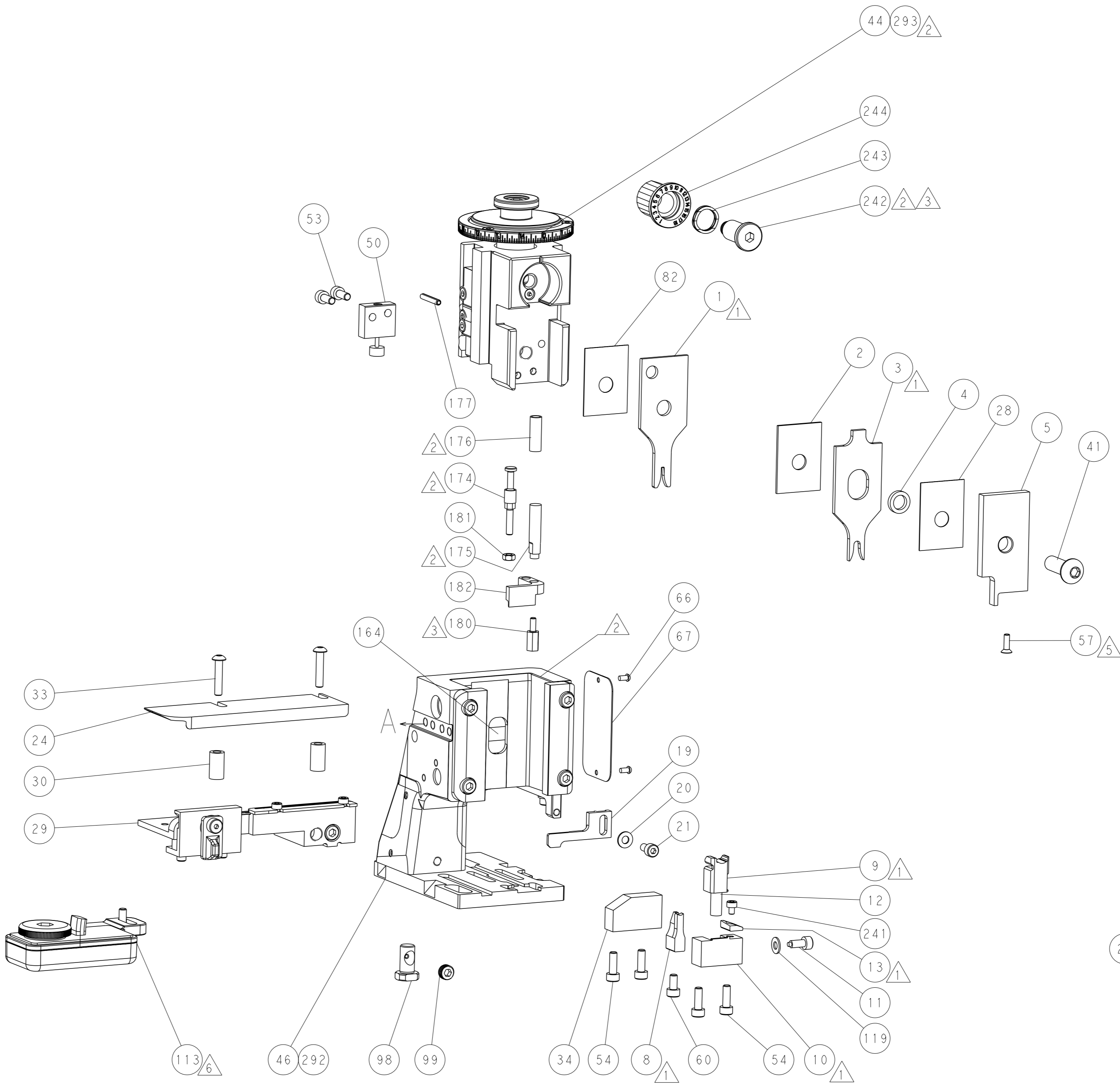
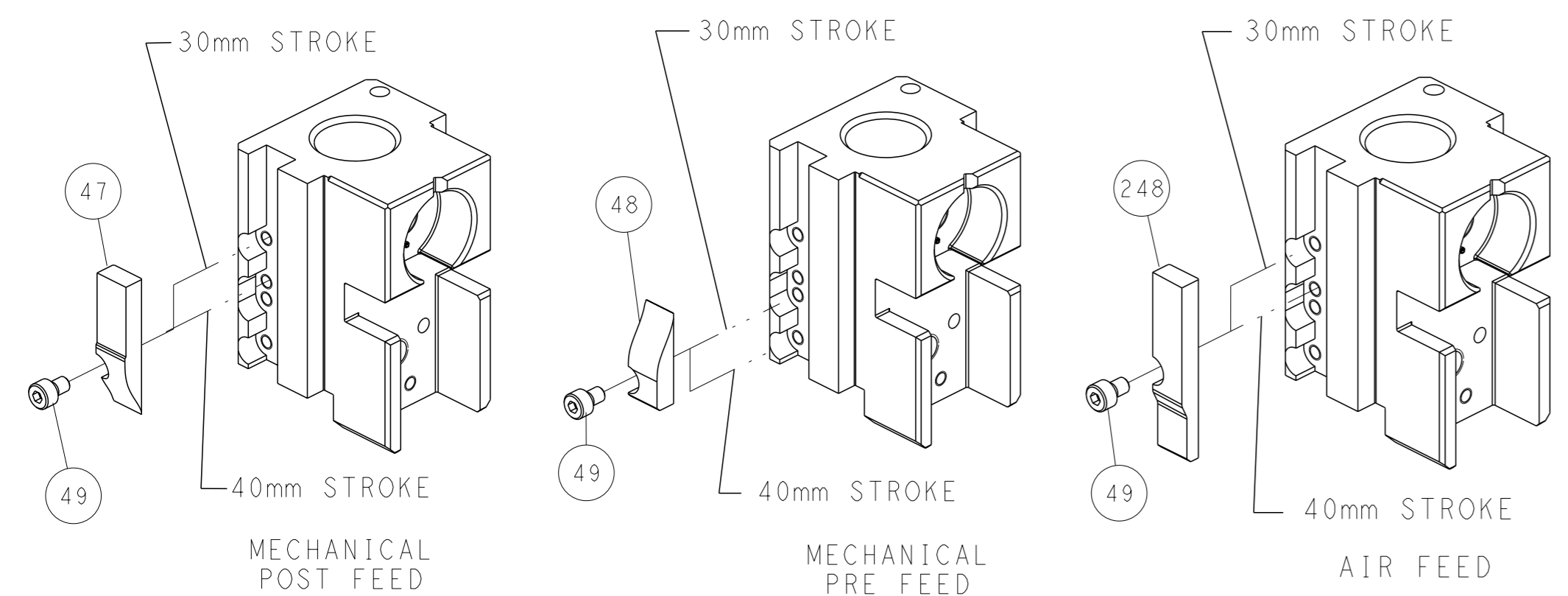
## PNEUMATIC



## FEED SPRING SETTING POSITION (SHOWN FROM REAR SIDE)



# CAM POSITIONS

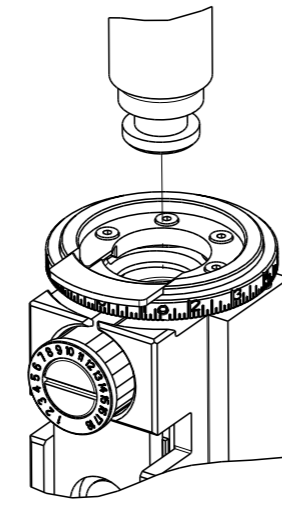


**ATLANTIC VERSION**  
 Shown on sheets 1 of 4 & 2 of 4  
 (Pacific version shown on sheets 3 of 4 & 4 of 4)

|  |  |   |  |   |
|--|--|---|--|---|
| DIMENSIONS: mm<br>TOLERANCES UNLESS OTHERWISE SPECIFIED:<br>0 PLC ±<br>1 PLC ±<br>2 PLC ±<br>3 PLC ±<br>4 PLC ±<br>ANGLES FINISH ± |  | DWN H. HUANG 12MAR2012<br>CHK S. XI 12MAR2012<br>APVD S. XI 12MAR2012<br>PRODUCT SPEC<br>APPLICATION SPEC<br>WEIGHT<br>MATERIAL | NAME Ocean Side Feed Applicator<br>SIZE A1<br>CAGE CODE 00779<br>DRAWING NO. ©=2151484<br>SCALE 1:2<br>SHEET 2 of 4<br>REV H | TE Connectivity<br>Harrisburg, PA 17105-3608<br>RESTRICTED TO |
|--|--|---|--|---|

| PART NUMBER | REVISION | DESCRIPTION              | FEED TYPE  |
|-------------|----------|--------------------------|------------|
| 2-2151484-1 | H        | FINE CRIMP HEIGHT ADJUST | MECHANICAL |
| 2-2151484-2 | H        | FINE CRIMP HEIGHT ADJUST | PNEUMATIC  |
| 7-2151484-7 | A        | CRIMP TOOLING KIT        | -          |

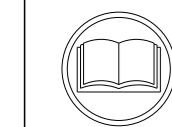
PACIFIC VERSION TERMINATOR  
INTERFACE ADAPTER



| APPLICATOR DATA                      |                |      |
|--------------------------------------|----------------|------|
| CRIMP                                | SIZE           | TYPE |
| WIRE                                 | 1.57 mm [.062] | F    |
| INSUL                                | 3.94 mm [.155] | O    |
| APPLICATOR INSTRUCTIONS<br>408-35042 |                |      |

| TERMINAL DATA: TE TERMINAL                       |             | TE CRIMP SPECIFICATION                                    |          |
|--|-------------|---|----------|
| TERMINAL NAME: AMP MCP 2.8K FLAT TYPE RECEPTACLE |             |   |          |
| WIRE STRIP LENGTH<br>3.40-4.00 mm [.134-.157 IN] |             | INSULATION DIAMETER RANGE<br>Ø1.10-1.40 mm [.043-.055 IN] |          |
| TERMINAL APPLICATION SPECIFICATION               | 114-18387   | -   | -        |
| TERMINALS APPLIED                                |             |   |          |
| TE TERMINAL                                      | TE TERMINAL | TE SEAL   | TE SEAL  |
| 1564984-1  | 1564984-3   |   | 963294-1 |
| 1564984-2  |             |   |          |

| WIRE SIZE | CRIMP HEIGHT mm [INCH]     | CRIMP HEIGHT REFERENCE SETTING |
|-----------|----------------------------|--------------------------------|
| 0.35mm2   | 1.11+/-0.03 [.044+/-0.001] | 5.8                            |
| 0.22mm2   | 1.05+/-0.03 [.041+/-0.001] | 6.6                            |



- 1 RECOMMENDED SPARE PARTS
  - 2 REFER TO SUPPLIED INSTRUCTION SHEET FOR CLEANING, LUBRICATION & STORAGE OF APPLICATOR.
  - 3 APPLY PART NUMBER 2-23419-6 LOCTITE TO THREADS OF ITEM 242.
  - 4 CRIMP HEIGHT REFERENCE SETTING WAS THE SETTING USED WHEN THE APPLICATOR WAS QUALIFIED AT THE FACTORY. ADJUSTMENT MAY BE NECESSARY WHEN RUNNING APPLICATOR IN THE FIELD
  - 5 APPLY TORQ-SEAL IN ALLEN SOCKET TO FILL HOLE AFTER FLAT HD HAS BEEN ADJUSTED TO CORRECT HEIGHT AT QUALIFICATION. APPLY #1-23419-5 LOC-TITE TO THREADS.
  - 6 TERMINAL LUBRICANT IS RECOMMENDED.
7. UNLESS SPECIFIED OTHERWISE TORQUE VALUES SHALL BE USED PER DOCUMENT, 101-35000.

**\*WARNING**  
ON INSTALLATION, SET WIRE DISC TO CRIMP HEIGHT REFERENCE SETTING FOR LARGEST WIRE SIZE. CRIMP HEIGHT REFERENCE SETTINGS GREATER THAN THE VALUE SHOWN MAY CAUSE DAMAGE TO THE CRIMP TOOLING, REFER TO THE INSTRUCTION SHEET FOR PROPER SETUP AND ADJUSTMENTS.

**PACIFIC VERSION**  
Shown on sheets 3 of 4 & 4 of 4  
(Atlantic version shown on sheets 1 of 4 & 2 of 4)

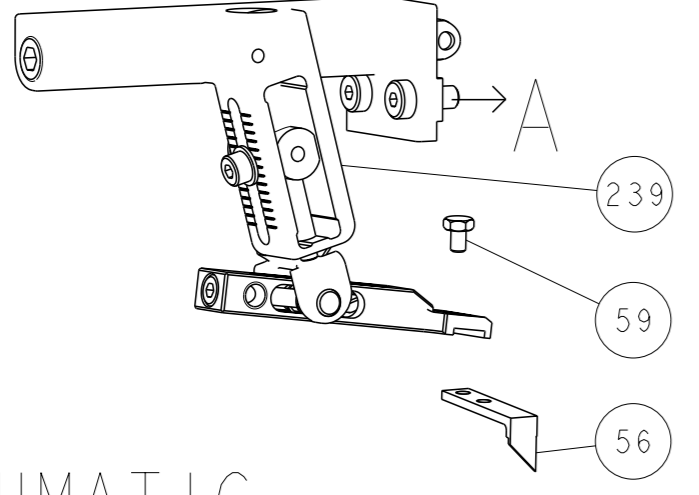
| LOC | DIST | REVISIONS   |      |    |      |
|-----|------|-------------|------|----|------|
| A   | 66   | REV         | DATE | BY | APPV |
| -   | -    | SEE SHEET 1 | -    | -  | -    |

|     |     |     |             |                                     |                               |     |
|-----|-----|-----|-------------|-------------------------------------|-------------------------------|-----|
| -   | 1   | 1   | 2119082-2   | CAM, SNAIL, INSULATION ADJUSTMENT   | 244                           |     |
| -   | 1   | 1   | 2079764-1   | WASHER, WAVE SPRING, CREST-TO-CREST | 243                           |     |
| 3   | -   | 1   | 1           | 2119083-1                           | RETAINER, INSULATION DIAL     | 242 |
| -   | 1   | 1   | 7-18023-7   | SCR, SKT HD CAP M3 X 4.0            | 241                           |     |
| -   | -   | 1   | 1           | 2119580-1                           | MECHANICAL FEED ASSEMBLY      | 239 |
| -   | 1   | -   | -           | 2844940-1                           | AIR FEED MODULE               | 238 |
| -   | REF | REF | 994970-2    | COUNTER, MAGNETIC                   | 164                           |     |
| -   | 1   | -   | -           | 2119641-2                           | FEED CAM, AIR FEED            | 151 |
| -   | 1   | 1   | 2168083-8   | SCR, SKT HD CAP, RoHS, M4 X 16      | 144                           |     |
| -   | 4   | 4   | 2168083-9   | SCR, SKT HD CAP, RoHS, M4 X 20      | 143                           |     |
| -   | -   | 1   | 1           | 2119653-2                           | FEED CAM, POST FEED           | 142 |
| -   | 1   | 1   | 1-1803583-0 | APPLICATOR BASIC ASSEMBLY, SF       | 141                           |     |
| -   | 1   | 1   | 1803516-1   | RAM ASSEMBLY, SF PACIFIC            | 140                           |     |
| -   | 1   | 1   | 1-18028-2   | WASHER, FLAT, REG M4                | 119                           |     |
| 6   | -   | 1   | 1           | 2119955-1                           | ASSY, LUBRICATOR, SIDE FEED   | 113 |
| -   | 1   | 1   | 2844908-1   | SCREW, LOCKING                      | 99                            |     |
| -   | 1   | 1   | 2844907-1   | POST, LOCKING                       | 98                            |     |
| -   | 1   | 1   | 455888-4    | SPACER, CRIMPER                     | 82                            |     |
| -   | 1   | 1   | 1803607-3   | DOCUMENTATION PACKAGE               | 71                            |     |
| -   | 1   | 1   | 2119740-1   | TAG, IDENTIFICATION                 | 67                            |     |
| -   | 2   | 2   | 2168078-1   | SCREW, DRIVE, RH, RoHS, 2 x .188    | 66                            |     |
| -   | 1   | 1   | 5-18022-5   | SCR, HEX HD CAP, M4 X 6.0           | 59                            |     |
| 5   | -   | 1   | 1           | 985575-3                            | SCR, FLT SKT HD CAP M3 X 10.0 | 57  |
| -   | 1   | 1   | 1338685-1   | PAWL, FEED                          | 56                            |     |
| -   | 2   | 2   | 1-2168083-0 | SCR, SKT HD CAP, RoHS, M4 X 10      | 53                            |     |
| -   | 1   | 1   | 1803382-2   | HOLD DOWN, SPRING LOADED            | 50                            |     |
| -   | 1   | 2   | 18023-9     | SCR, SKT HD CAP M4 X 6.0            | 49                            |     |
| -   | -   | 1   | 1           | 2119652-1                           | FEED CAM, PRE FEED            | 48  |
| -   | 1   | 1   | 1803602-1   | SCR, BHSC, RoHS (M8 X 25)           | 41                            |     |
| -   | 1   | 1   | 1-1752356-7 | SUPPORT, TERMINAL                   | 34                            |     |
| -   | 2   | 2   | 2079383-5   | SCR, BHSC, RoHS (M4 X 20)           | 33                            |     |
| -   | 2   | 2   | 2-2844962-8 | SPACER, CYLINDRICAL, STRIP GUIDE    | 30                            |     |
| -   | 1   | 1   | 2844992-1   | ASSEMBLY, STRIP GUIDE               | 29                            |     |
| -   | 1   | 1   | 455888-4    | SPACER, CRIMPER                     | 28                            |     |
| -   | 1   | 1   | 1320928-2   | STRIP GUIDE                         | 24                            |     |
| -   | 1   | 1   | 2168083-2   | SCR, SKT HD CAP, RoHS, M4 X 8.0     | 21                            |     |
| -   | 1   | 1   | 1-18028-2   | WASHER, FLAT, REG M4                | 20                            |     |
| -   | 1   | 1   | 2119533-1   | STRIPPER, SIDE FEED                 | 19                            |     |
| 1   | -   | 1   | 1           | 2119806-1                           | INSERT, SHEAR                 | 13  |
| -   | 1   | 1   | 3-22280-3   | SPRING, COMPRESSION                 | 12                            |     |
| -   | 1   | 1   | 1-356885-4  | STOP, SHEAR                         | 11                            |     |
| 1   | -   | 1   | 1           | 2119805-1                           | SHEAR HOLDER, FRONT           | 10  |
| 1   | -   | 1   | 1           | 318707-1                            | FLOATING SHEAR, FRONT         | 9   |
| 1   | 1   | 1   | 3-1633129-7 | ANVIL, COMBINATION .062             | 8                             |     |
| -   | -   | -   | -           | -                                   | 7                             |     |
| -   | -   | -   | -           | -                                   | 6                             |     |
| -   | 1   | 1   | 2119781-1   | DEPRESSOR, SHEAR                    | 5                             |     |
| -   | 1   | 1   | 238011-4    | BLOCK, CRIMPER SPACER               | 4                             |     |
| 1   | 1   | 1   | 2-2119784-9 | CRIMPER, INSULATION O PREMIUM       | 3                             |     |
| -   | 1   | 1   | 1-455888-1  | SPACER, CRIMPER                     | 2                             |     |
| 1   | 1   | 1   | 1-456403-3  | CRIMPER, WIRE PREMIUM               | 1                             |     |
| -77 | -22 | -21 | PART NO     | DESCRIPTION                         | ITEM NO                       |     |

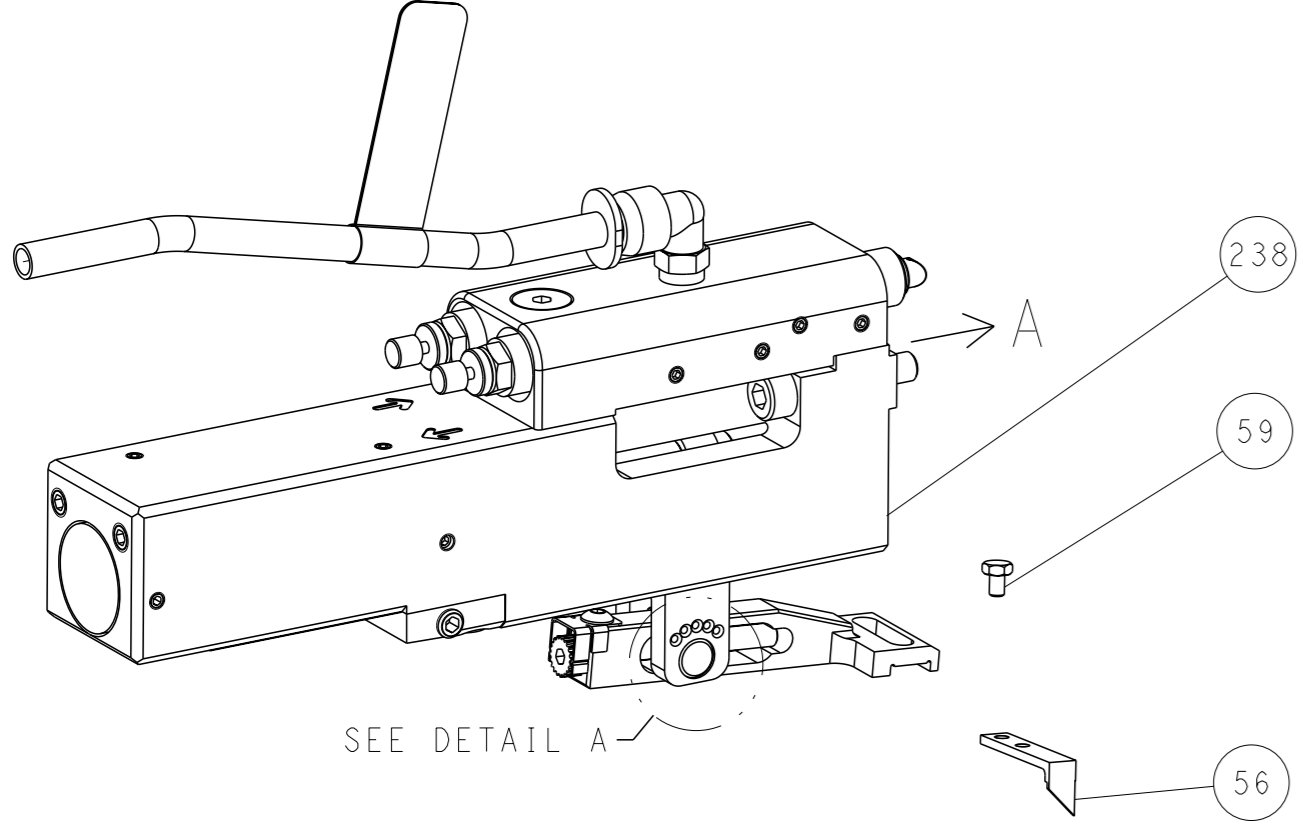
| DIMENSIONS: |         | TOLERANCES UNLESS OTHERWISE SPECIFIED: |         | APPROVED:          |         | DATE:  |      | NAME:     |          |
|-------------|---------|--|---------|--------------------|---------|--------|------|-----------|----------|
| mm          | 0 PLC ± | 1 PLC ±                                | 2 PLC ± | 3 PLC ±            | 4 PLC ± | APV    | S.XI | 12MAR2012 | H. HUANG |
|             | ANGLES  | FINISH                                 |         |                    |         |        |      |           |          |
| MATERIAL    |         | WEIGHT                                 |         | SCALE              |         | SHEET  |      | REV       |          |
|             |         |  |         | A1 00779 ©=2151484 |         | 3 OF 4 |      | H         |          |

| LOC | DIST | REVISIONS   |      |     |      |
|-----|------|-------------|------|-----|------|
| A   | 66   | REV         | DATE | OWN | APVD |
| -   | -    | SEE SHEET 1 | -    | -   | -    |

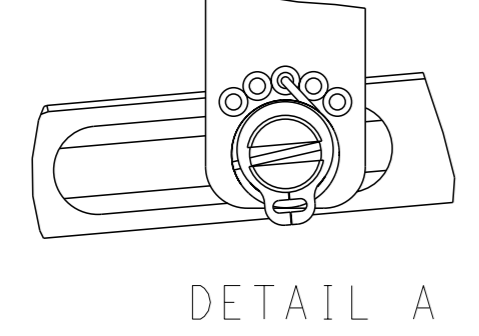
# FEED TYPE MECHANICAL



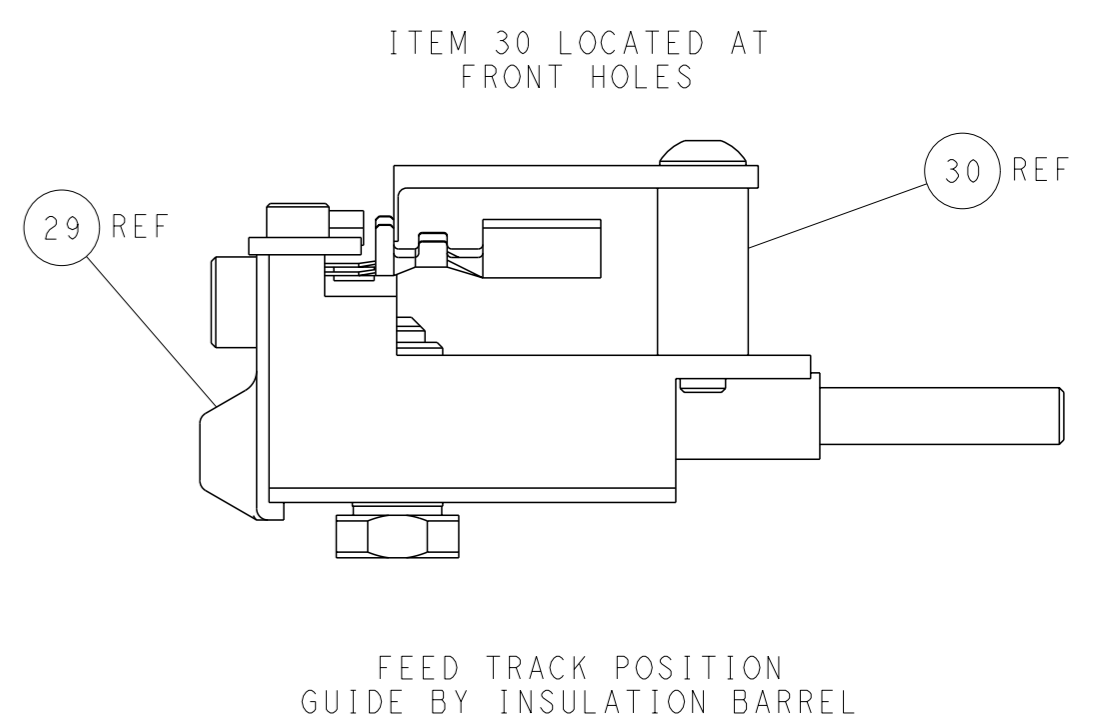
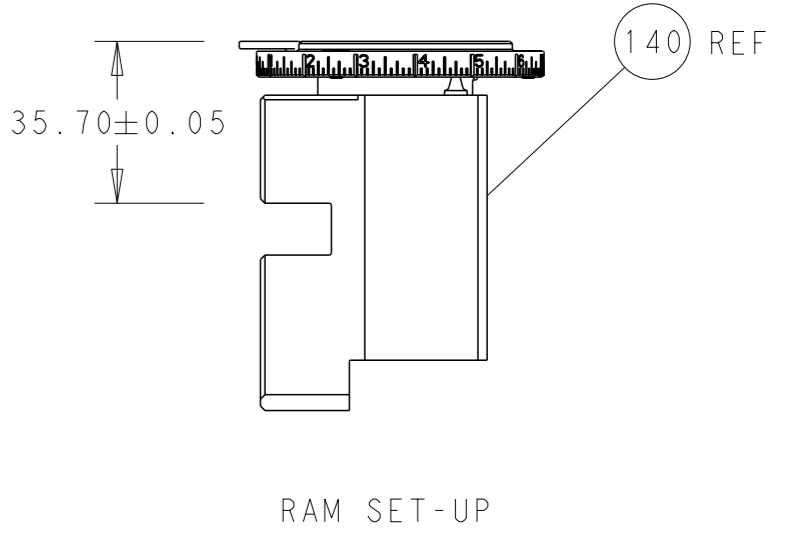
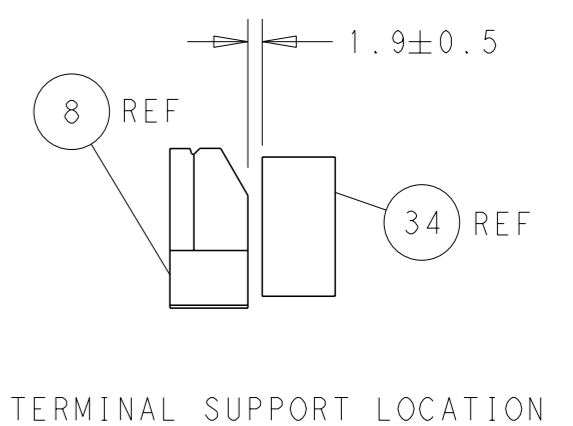
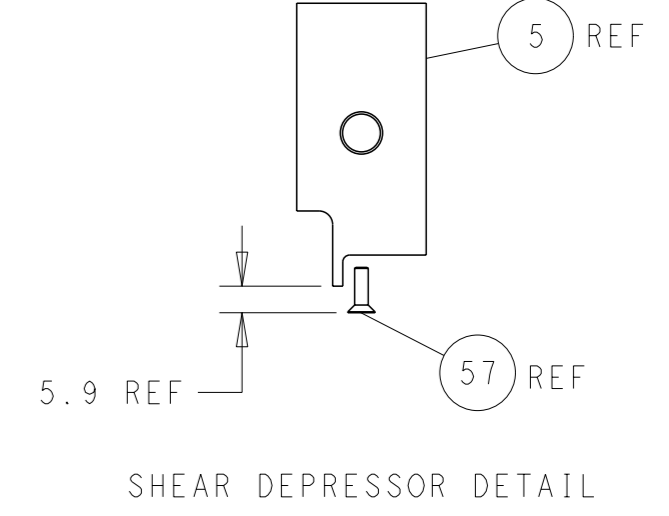
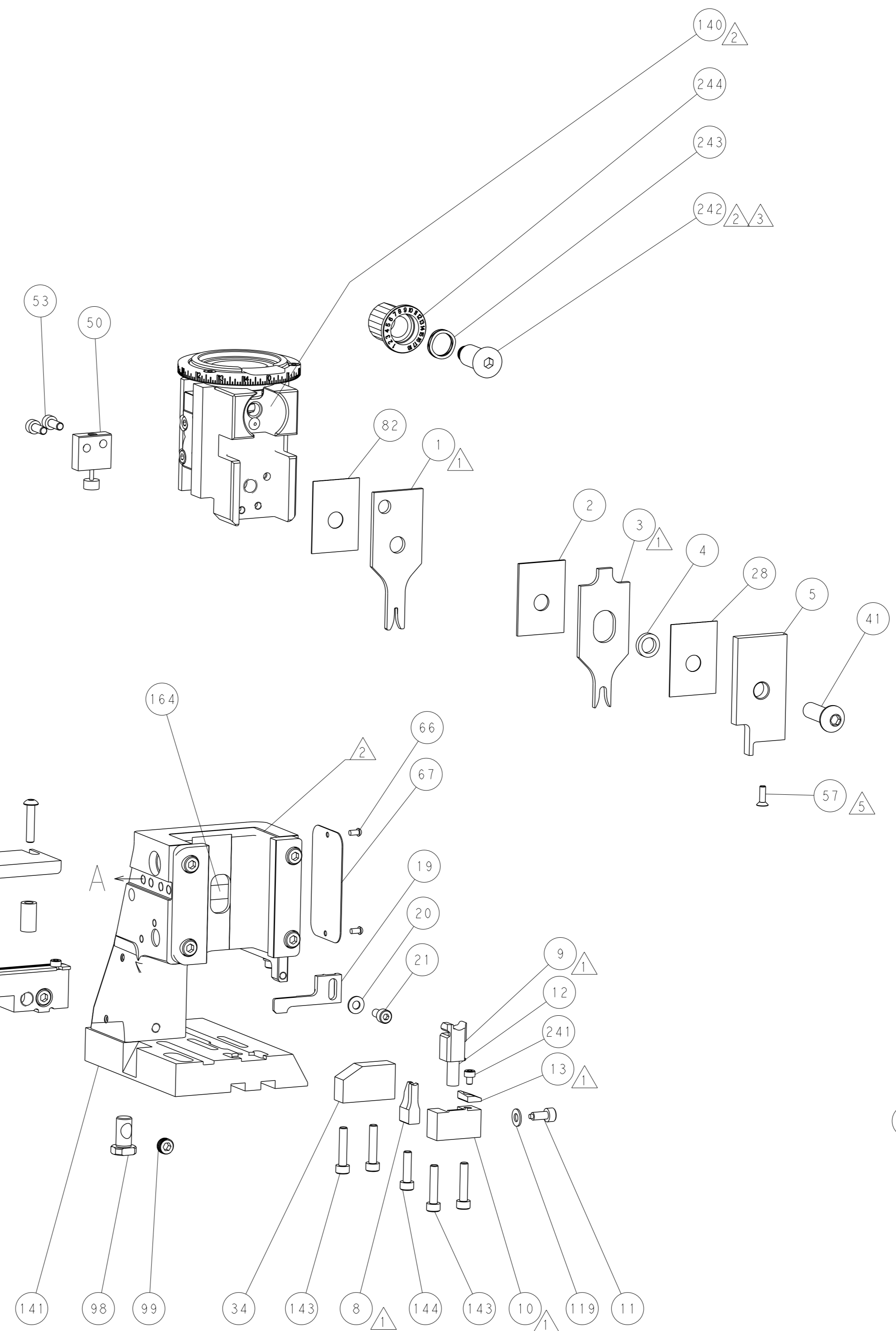
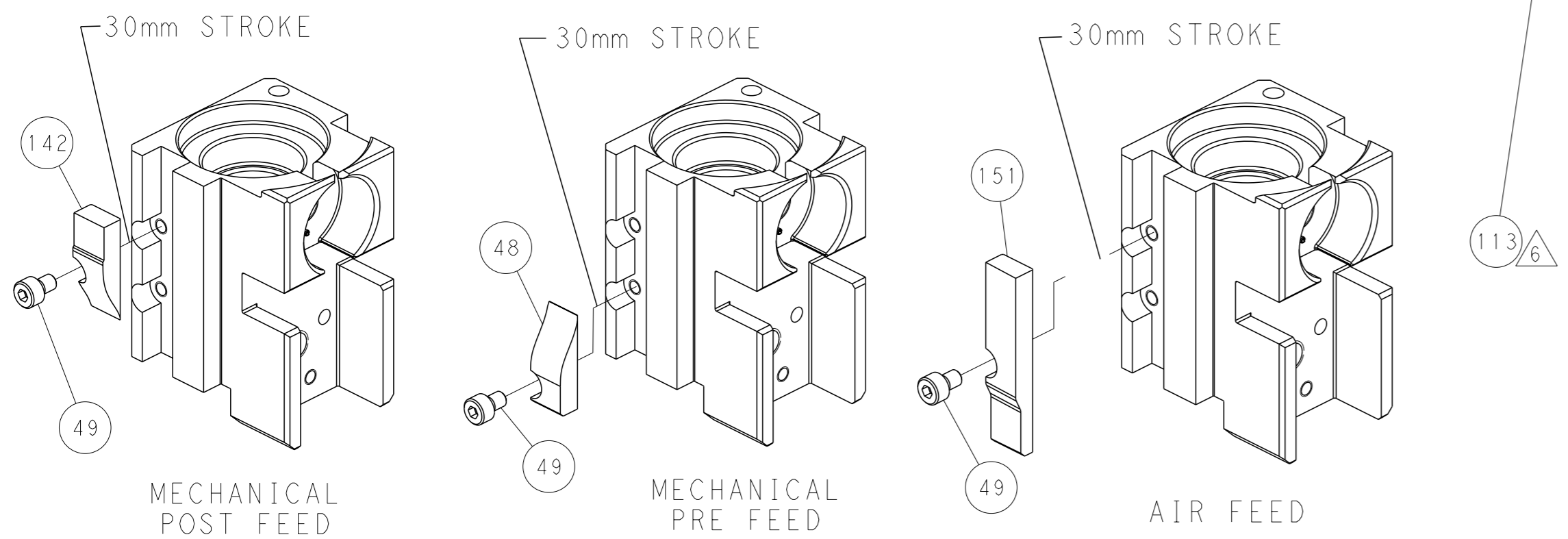
## PNEUMATIC



## FEED SPRING SETTING POSITION (SHOWN FROM REAR SIDE)



## CAM POSITIONS



**PACIFIC VERSION**  
 Shown on sheets 3 of 4 & 4 of 4  
 (Atlantic version shown on sheets 1 of 4 & 2 of 4)

|  |  |  |   |
|--|--|--|---|
| <small>THIS DRAWING IS A CONTROLLED DOCUMENT FOR TYCO ELECTRONICS CORPORATION. IT IS SUBJECT TO CHANGE AND THE CONTROLLING ORGANIZATION SHOULD BE CONTACTED FOR THE LATEST REVISION.</small> |  | OWN: H. HUANG<br>CHK: S. XI<br>APVD: S. XI<br>DATE: 12MAR2012  | TE Connectivity<br>Harrisburg, PA 17105-3608              |
| DIMENSIONS: mm<br>TOLERANCES UNLESS OTHERWISE SPECIFIED:<br>0 PLC ±<br>1 PLC ±<br>2 PLC ±<br>3 PLC ±<br>4 PLC ±<br>ANGLES FINISH ±   |  | NAME: Ocean Side Feed Applicator<br>APPLICATION SPEC: -<br>SIZE: A1<br>CAGE CODE: 00779<br>DRAWING NO: 2151484 | RESTRICTED TO: -<br>SCALE: 1:2<br>SHEET: 4 of 4<br>REV: H |
| MATERIAL: -<br>FINISH: -   |  | WEIGHT: -<br>Customer Accessible Production Drawing  | SHEETS 1 & 2 ARE NOT REQUIRED FOR PACIFIC VERSION         |