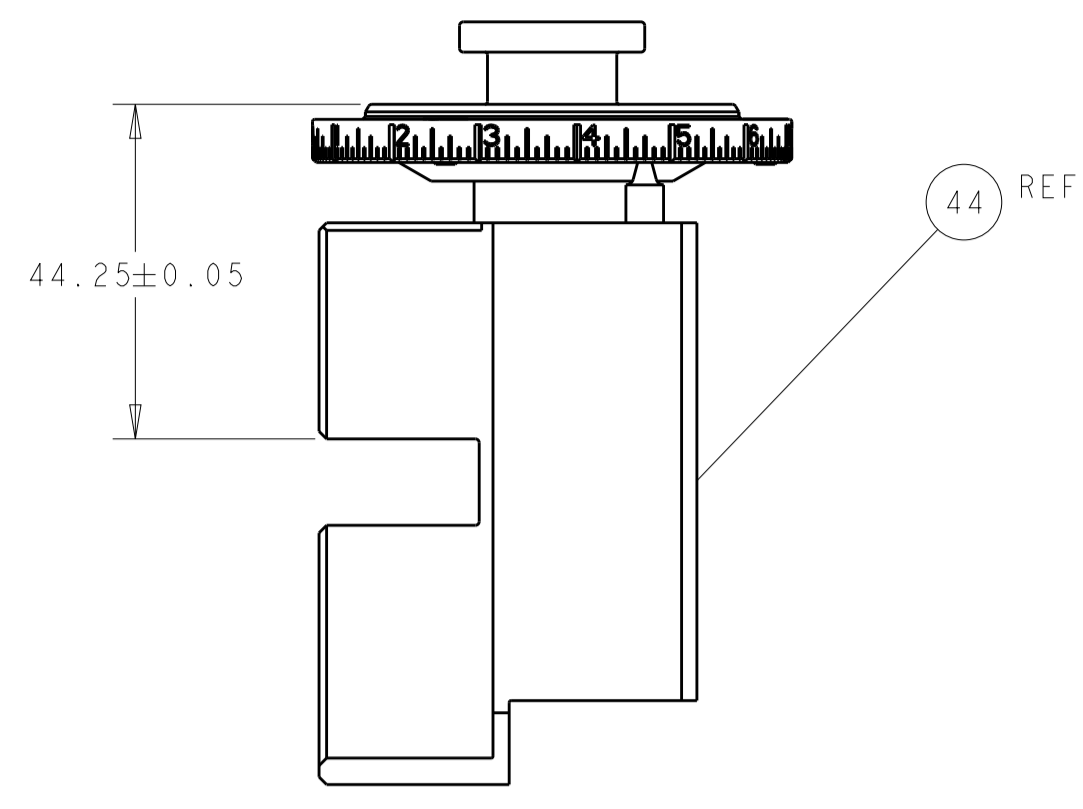
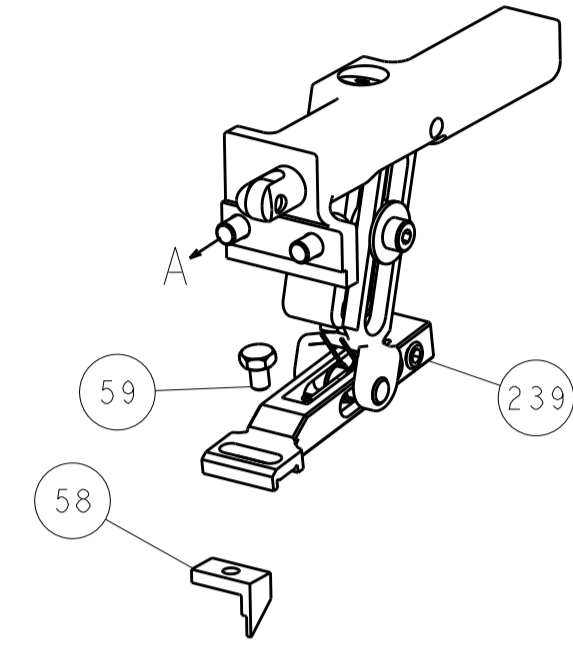


LOC		DIST		REVISIONS			
A	66	P	LTN	DESCRIPTION	DATE	OWN	APVD
		-		SEE SHEET 1			

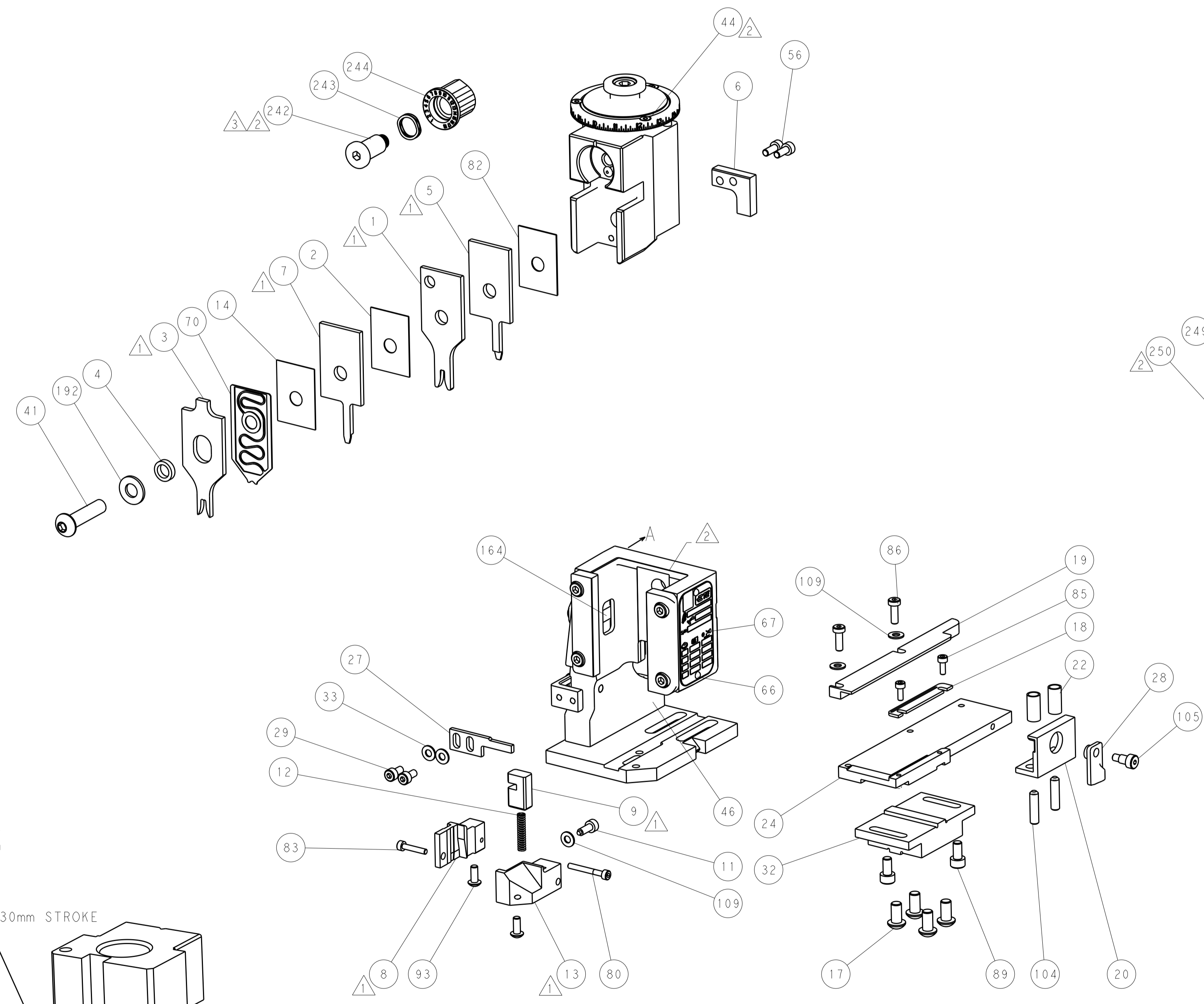
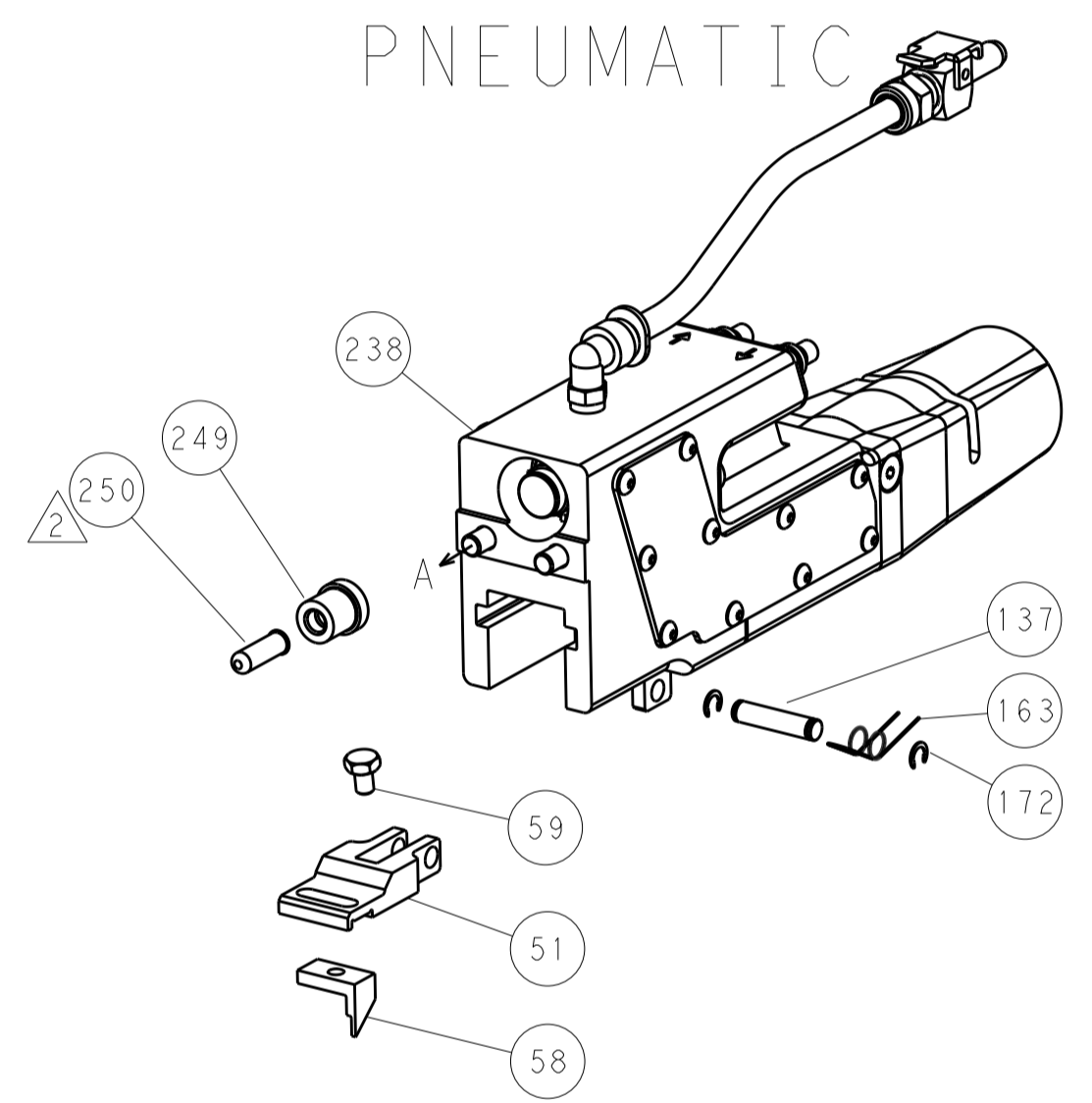


RAM SET-UP

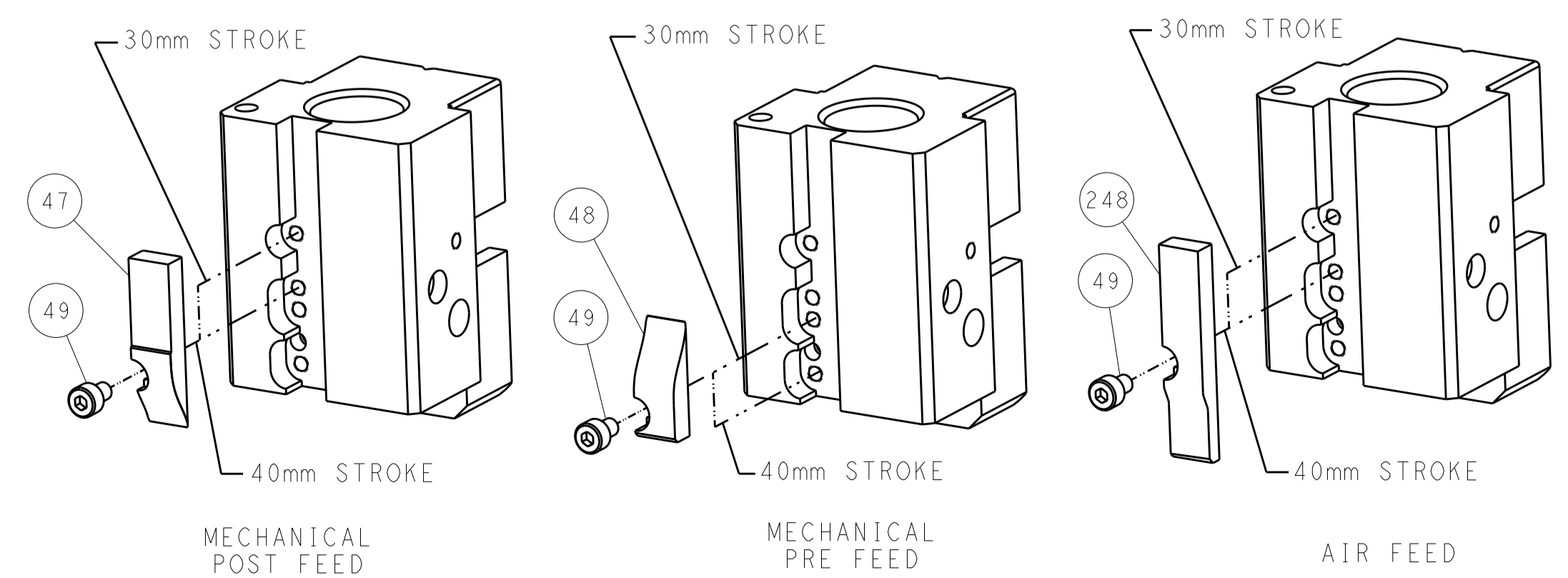
FEED TYPE
MECHANICAL



PNEUMATIC



CAM POSITIONS

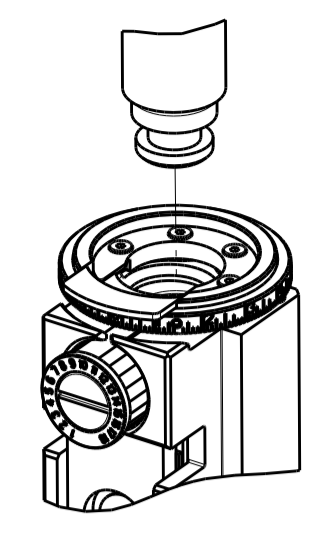


ATLANTIC VERSION
 Shown on sheets 1 of 4 & 2 of 4
 (Pacific version shown on sheets 3 of 4 & 4 of 4)

DIMENSIONS:		TOLERANCES UNLESS OTHERWISE SPECIFIED:		DWG: K. STAKEM 20JAN2014		TE Connectivity	
mm		0 PLC ±		CHK: G. BAILEY 20JAN2014		Harrisburg, PA 17105-3608	
Ø		1 PLC ±		APVD: T. ERLIN 20JAN2014		NAME: Ocean End Feed Applicator	
H		2 PLC ±		PRODUCT SPEC:		SIZE: CAGE CODE: DRAWING NO:	
D		3 PLC ±		APPLICATION SPEC:		RESTRICTED TO:	
R		4 PLC ±		WEIGHT:		A1 00779 ©=2150401	
ANGLES		FINISH:		Customer Accessible Production Drawing		SCALE: 1:1 SHEET 2 OF 4 REV E	

PART NUMBER	REVISION	DESCRIPTION	FEED TYPE
2-2150401-1	E	FINE CRIMP HEIGHT ADJUST	MECHANICAL
2-2150401-2	E	FINE CRIMP HEIGHT ADJUST	PNEUMATIC
7-2150401-7	A	CRIMP TOOLING KIT	-

PACIFIC VERSION TERMINATOR
 INTERFACE ADAPTER



APPLICATOR DATA

CRIMP	SIZE	TYPE
WIRE	2.54 mm [.100]	F
INSUL	3.56 mm [.138]	F

APPL INSTRUCTIONS
 408-35043

TERMINAL DATA: TE TERMINAL TE CRIMP SPECIFICATION

TERMINAL NAME: .250 (6.3) SERIES FLAG POS. LOCK

WIRE STRIP LENGTH	INSULATION DIAMETER RANGE
5.00-6.00 mm [.197-.236 IN]	∅2.20-3.30 mm [.087-.130 IN]

TERMINAL APPLICATION SPECIFICATION (A) 114-20083 (B) 114-20080

TERMINALS APPLIED

TE TERMINAL	TE TERMINAL	TE TERMINAL	TE TERMINAL
(A) 926820-1	(A) 926820-4	(A) 926820-7	
(A) 926820-2	(A) 926820-5	(A) 926820-8	
(A) 926820-3	(A) 926820-6	(B) 282349-1	

WIRE SIZE	CRIMP HEIGHT mm [INCH]	CRIMP HEIGHT REFERENCE SETTING
1.50mm2	1.60+/-0.03 [.063+/-0.001]	5.7
1.00mm2	1.45+/-0.03 [.057+/-0.001]	7.3
0.75mm2	1.35+/-0.03 [.053+/-0.001]	9.0
0.50mm2	1.27+/-0.03 [.050+/-0.001]	10.3



- 1 RECOMMENDED SPARE PARTS
- 2 REFER TO SUPPLIED INSTRUCTION SHEET FOR CLEANING, LUBRICATION AND STORAGE OF APPLICATOR.
- 3 APPLY PART NUMBER 2-23419-6 LOCTITE TO THREADS OF ITEM 242.
- 4 CRIMP HEIGHT REFERENCE SETTING WAS THE SETTING USED WHEN THE APPLICATOR WAS QUALIFIED AT THE FACTORY. ADJUSTMENT MAY BE NECESSARY WHEN RUNNING APPLICATOR IN THE FIELD.
- 5 UNLESS SPECIFIED OTHERWISE TORQUE VALUES SHALL BE USED PER DOCUMENT, 101-35000.
- 6 WIRE RANGE 0.5mm2 IS NOT CAPABLE FOR FORE MONITORING. IF CRIMP FORCE MONITORING IS ESSENTIAL, 0.5mm2 IS NOT ALLOWED FOR THIS TERMINAL. THIS WAS TAKEN FROM TERMINAL DRAWING.

***WARNING**
 ON INSTALLATION, SET WIRE DISC TO CRIMP HEIGHT REFERENCE SETTING FOR LARGEST WIRE SIZE. CRIMP HEIGHT REFERENCE SETTINGS GREATER THAN THE VALUE SHOWN MAY CAUSE DAMAGE TO THE CRIMP TOOLING, REFER TO THE INSTRUCTION SHEET FOR PROPER SETUP AND ADJUSTMENTS.

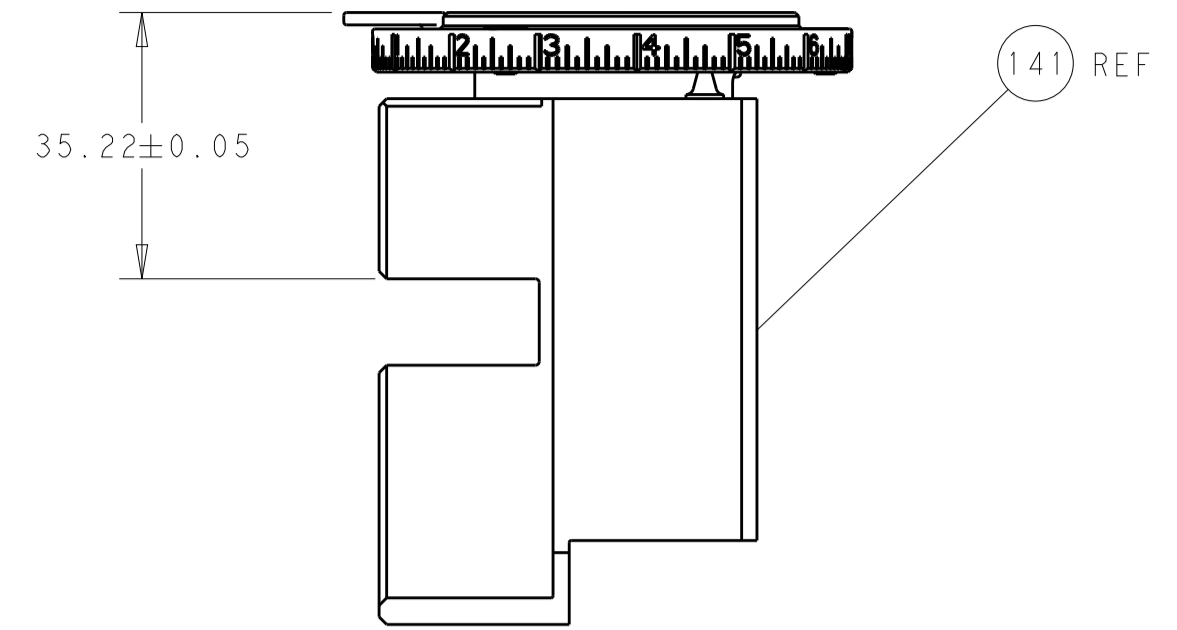
LOC	DIST	REV	DATE	BY	APPV
A	66				

QTY	REV	DESCRIPTION	DATE	OWN	APPV
-	1	-			
-	1	2119640-1			250
-	1	1803259-1			249
-	1	2119082-7			244
-	1	2079764-1			243
-	1	2119083-1			242
-	-	2119580-1			239
-	1	2063440-1			238
-	1	1-18028-0			192
-	2	21045-3			172
-	REF	994970-2			164
-	1	240638-1			163
-	1	2119641-2			152
-	-	2119653-2			142
-	1	2-2119655-0			141
-	1	1803518-2			140
-	1	3-23627-7			137
-	3	1-18028-2			109
-	1	980371-4			105
-	2	2-18032-5			104
-	2	1-2079383-6			93
-	2	2168083-4			89
-	2	2168400-1			86
-	2	2168083-1			85
-	1	1-2168083-3			83
-	1	455888-5			82
-	1	2-2168083-1			80
-	1	1803607-2			71
-	1	2119791-9			70
-	1	2119740-1			67
-	2	2168078-1			66
-	1	5-18022-5			59
-	1	224716-6			58
-	2	1-2168083-0			56
-	1	2119799-1			51
-	1	18023-9			49
-	-	2119652-1			48
-	1	2-2079383-0			41
-	2	1-18028-2			33
-	1	2217981-1			32
-	2	2168083-2			29
-	1	356835-1			28
-	1	690455-9			27
-	1	2217982-1			24
-	2	2-22281-3			22
-	1	240792-1			20
-	1	662657-1			19
-	1	690438-1			18
-	1	455888-3			14
-	1	2217983-1			13
-	1	6-22279-4			12
-	1	1-356885-6			11
-	-	-			10
-	1	662631-1			9
-	1	2217984-1			8
-	1	662630-1			7
-	1	662632-2			6
-	1	662630-2			5
-	1	238011-2			4
-	1	1-1633961-3			3
-	1	455888-4			2
-	1	456407-8			1
-	77-22-21	PART NO			ITEM NO

PACIFIC VERSION
 Shown on sheets 3 of 4 & 4 of 4
 (Atlantic version shown on sheets 1 of 4 & 2 of 4)

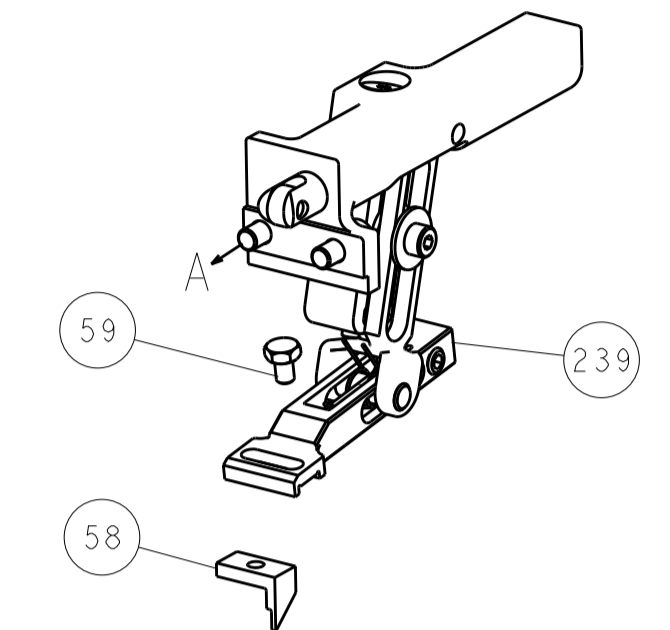
DIMENSIONS: mm		TOLERANCES UNLESS OTHERWISE SPECIFIED:		OWN: STAKEM 20JAN2014	CHK: G. BAILEY 20JAN2014	TE Connectivity Harrisburg, PA 17105-3608	
0 PLC ±		1 PLC ±		APVD: T. ERLIN 20JAN2014	NAME: Ocean End Feed Applicator		
2 PLC ±		3 PLC ±		PRODUCT SPEC			
4 PLC ±		ANGLES ±		APPLICATION SPEC			
MATERIAL:		FINISH:		SIZE: A1	CAGE CODE: 00779	DRAWING NO: C=2150401	RESTRICTED TO:
Customer Accessible Production Drawing				SCALE: 1:1	SHEET: 3	OF: 4	REV: E

LOC	DIST	REV	DATE	BY	APPV
A	66				
REVISIONS			DESCRIPTION	DATE	BY
-			SEE SHEET 1	-	-

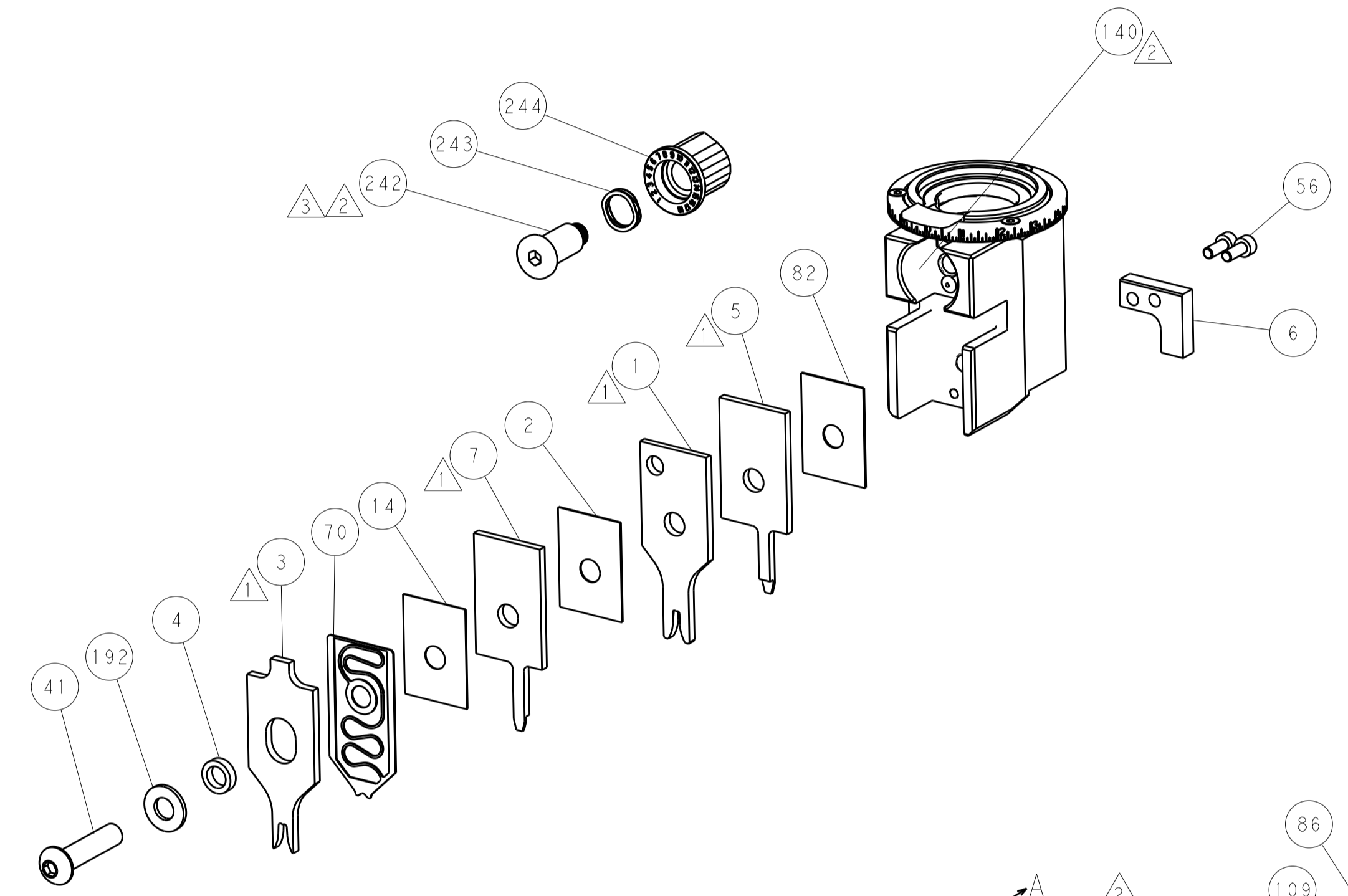
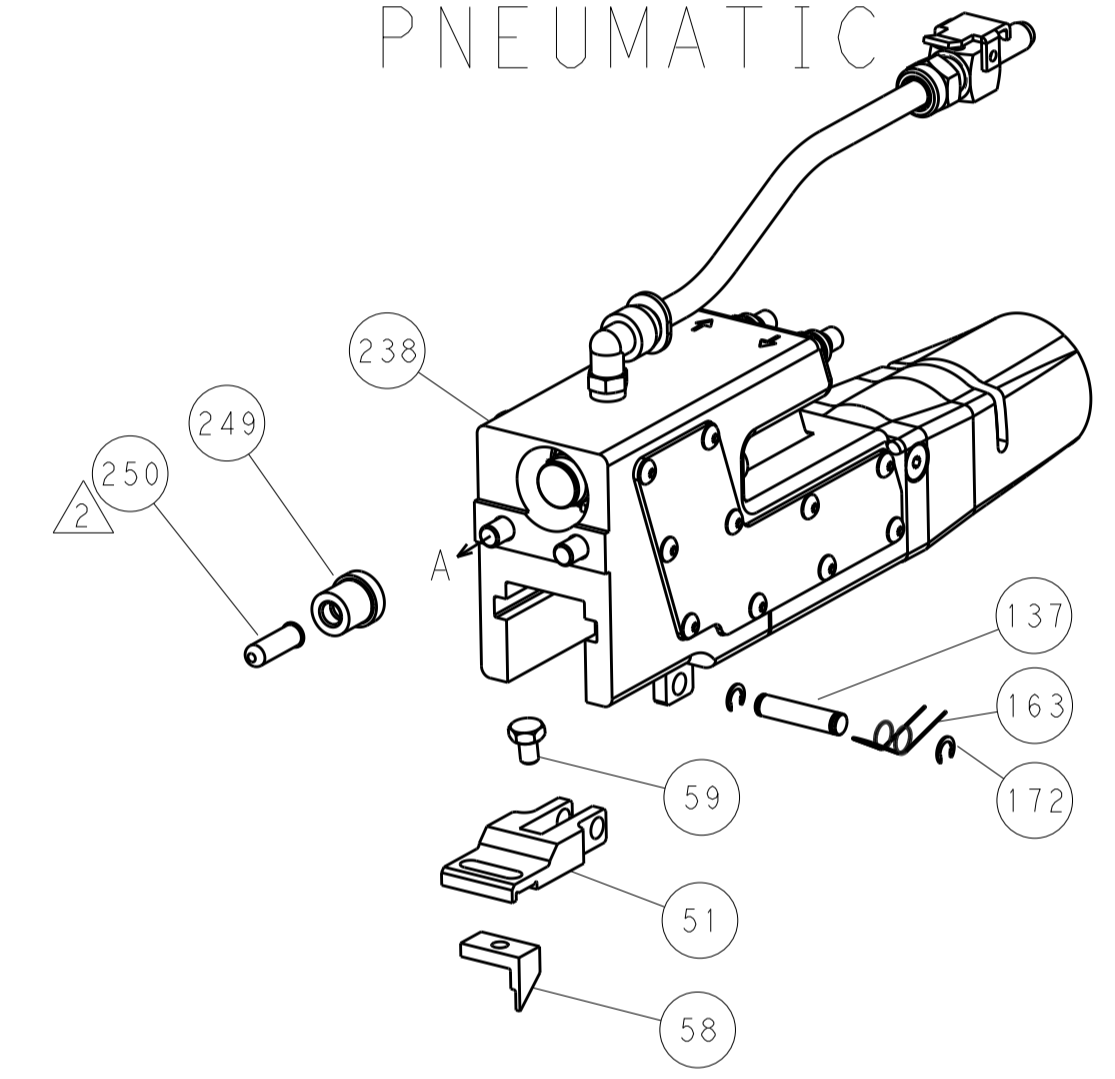


RAM SET-UP

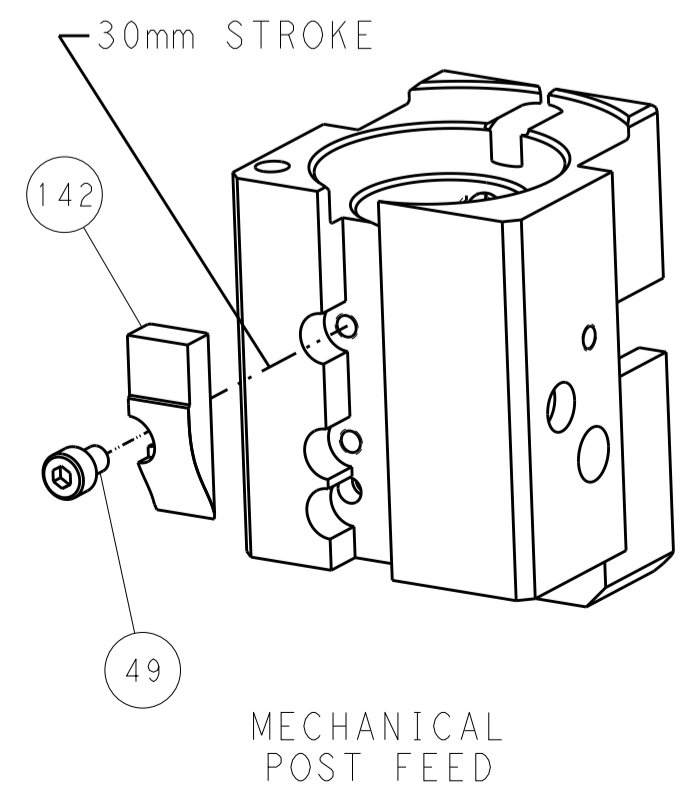
FEED TYPE
MECHANICAL



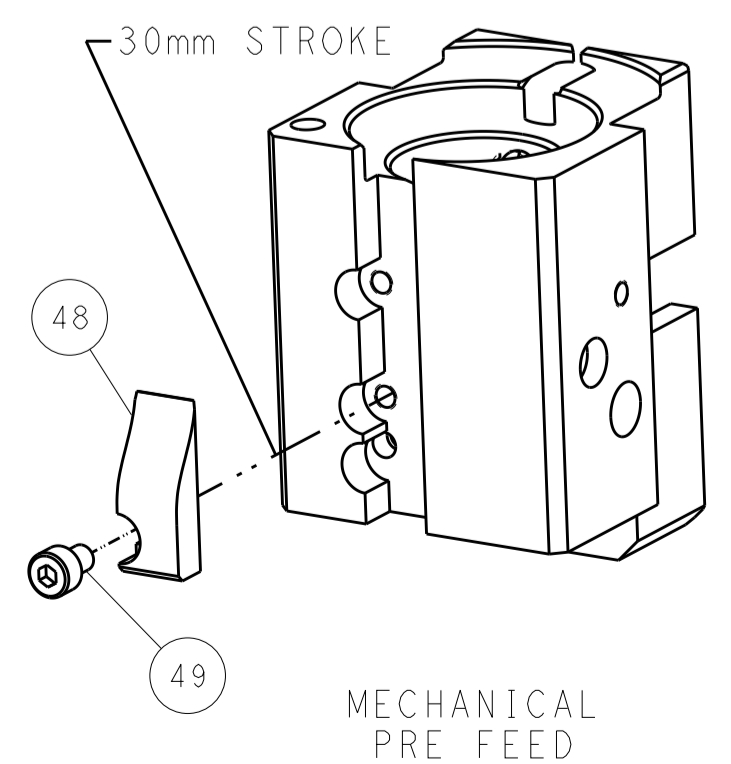
PNEUMATIC



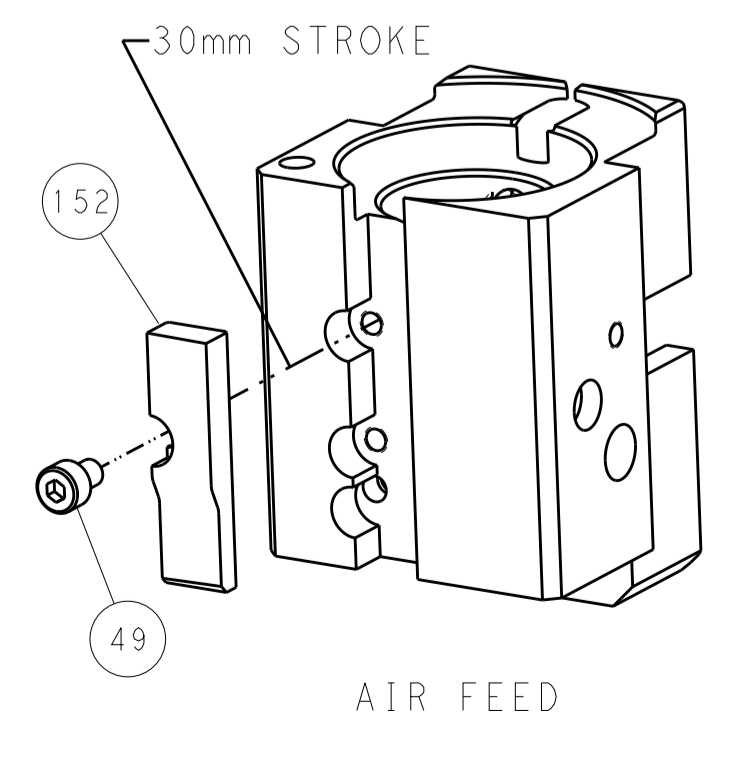
CAM POSITIONS



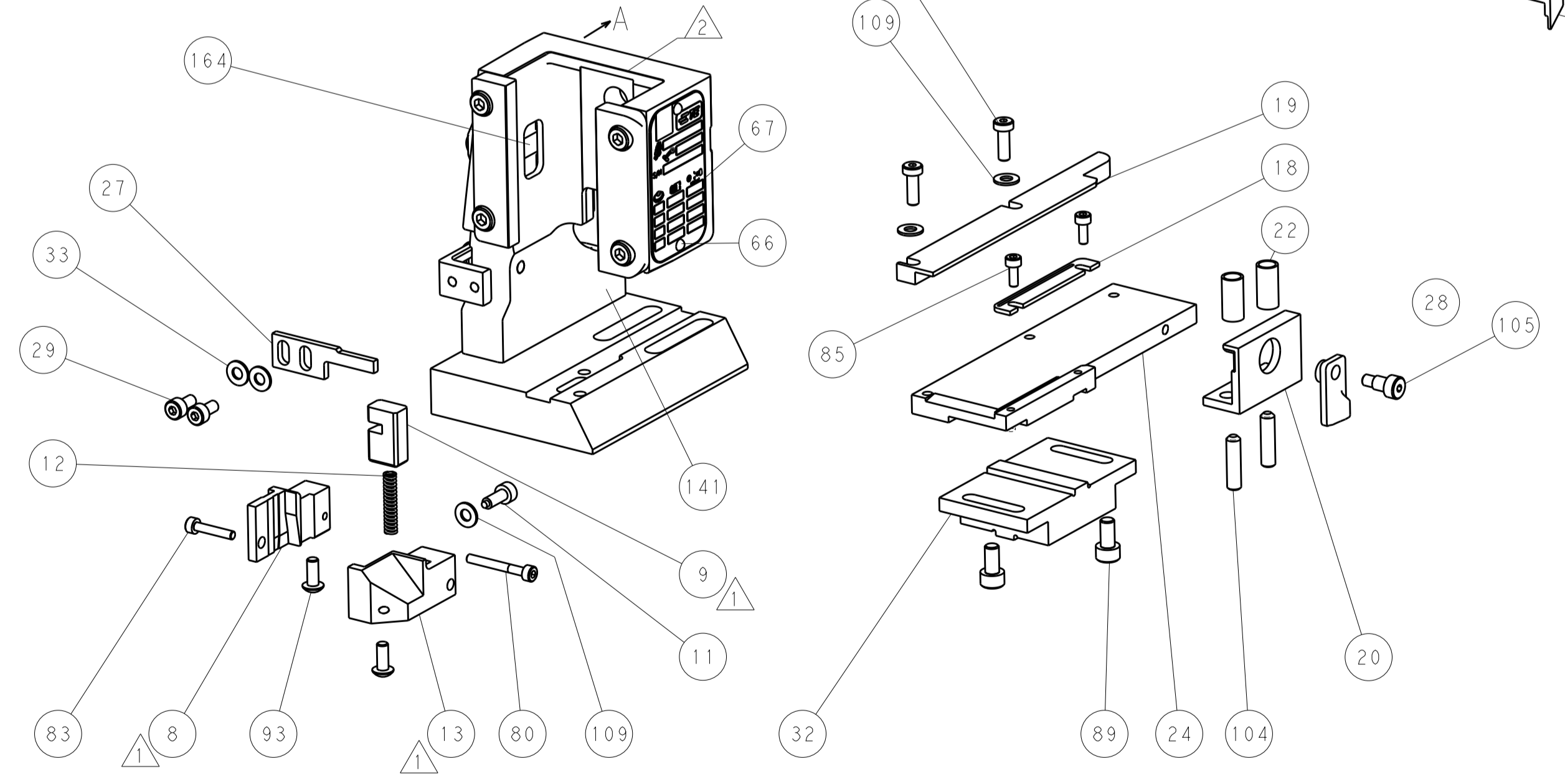
MECHANICAL POST FEED



MECHANICAL PRE FEED



AIR FEED



PACIFIC VERSION
 Shown on sheets 3 of 4 & 4 of 4
 (Atlantic version shown on sheets 1 of 4 & 2 of 4)

DIMENSIONS:		TOLERANCES UNLESS OTHERWISE SPECIFIED:		DWN: K. STAKEM 20JAN2014		TE Connectivity	
mm	0 PLC ±	1 PLC ±	2 PLC ±	3 PLC ±	4 PLC ±	5 PLC ±	Harrisburg, PA 17105-3608
	ANGLES ±			CHK: G. BAILEY 20JAN2014	NAME: Ocean End Feed Applicator		RESTRICTED TO
MATERIAL:	FINISH:			APPV: T. ERLIN 20JAN2014	SIZE: CAGE CODE: DRAWING NO: A1 00779 ©=2150401		REV: E
Customer Accessible Production Drawing				SCALE: 1:1	SHEET: 4	OF: 4	REV: E