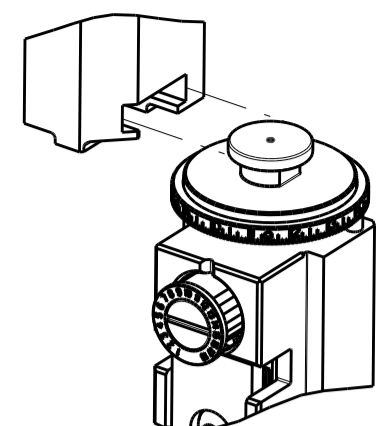


PART NUMBER	REVISION	DESCRIPTION	FEED TYPE
2150248-2	F	FINE CRIMP HEIGHT ADJUST	PNEUMATIC
7-2150248-2	F	PNEUMATIC AND CRIMP TOOLING KIT	PNEUMATIC
7-2150248-7	F	CRIMP TOOLING KIT	-

ATLANTIC VERSION TERMINATOR INTERFACE ADAPTER



APPLICATOR DATA		
CRIMP	SIZE	TYPE
WIRE	3.30 mm [.130]	F
INSUL	4.57 mm [.180]	F
APPLICATOR INSTRUCTIONS 408-35043		

TERMINAL DATA: TE TERMINAL		TE CRIMP SPECIFICATION	
TERMINAL NAME: .250 FASTIN-FASTON TAB			
WIRE STRIP LENGTH		INSULATION DIAMETER RANGE	
.198-.228 IN [5.03-5.79 mm]		∅.120-.170 IN [3.05-4.32 mm]	
TERMINAL APPLICATION SPECIFICATION	114-2025		
TERMINALS APPLIED			
TE TERMINAL	TE TERMINAL	TE TERMINAL	TE TERMINAL
60701-1			

WIRE SIZE	CRIMP HEIGHT mm [INCH]	CRIMP HEIGHT REFERENCE SETTING
10 AWG	2.62 +/- 0.05 [1.103 +/- .002]	3.1
12 AWG	2.13 +/- 0.05 [1.084 +/- .002]	7.9
14AWG + 18AWG	2.06 +/- 0.05 [1.081 +/- .002]	8.8
2.50mm2	1.93 +/- 0.05 [1.076 +/- .002]	10.1
14 AWG	1.83 +/- 0.05 [1.072 +/- .002]	11.1

- RECOMMENDED SPARE PARTS
- REFER TO SUPPLIED INSTRUCTION SHEET FOR CLEANING, LUBRICATION & STORAGE OF APPLICATOR.
- APPLY PART NUMBER 2-23419-6 LOCTITE TO THREADS OF ITEM 242.
- CRIMP HEIGHT REFERENCE SETTING WAS THE SETTING USED WHEN THE APPLICATOR WAS QUALIFIED AT THE FACTORY. ADJUSTMENT MAY BE NECESSARY WHEN RUNNING APPLICATOR IN THE FIELD.
- TERMINAL PITCH NOT COMPATIBLE WITH MECHANICAL FEED.
- TERMINAL LUBRICANT IS RECOMMENDED.
- 7. UNLESS SPECIFIED OTHERWISE TORQUE VALUES SHALL BE USED PER DOCUMENT 101-35000.
- 10 AWG IS NOT RECOMMENDED FOR THIS TERMINAL.

***WARNING**
ON INSTALLATION, SET WIRE DISC TO CRIMP HEIGHT REFERENCE SETTING FOR LARGEST WIRE SIZE. CRIMP HEIGHT REFERENCE SETTINGS GREATER THAN THE VALUE SHOWN MAY CAUSE DAMAGE TO THE CRIMP TOOLING. REFER TO THE INSTRUCTION SHEET FOR PROPER SETUP AND ADJUSTMENTS.

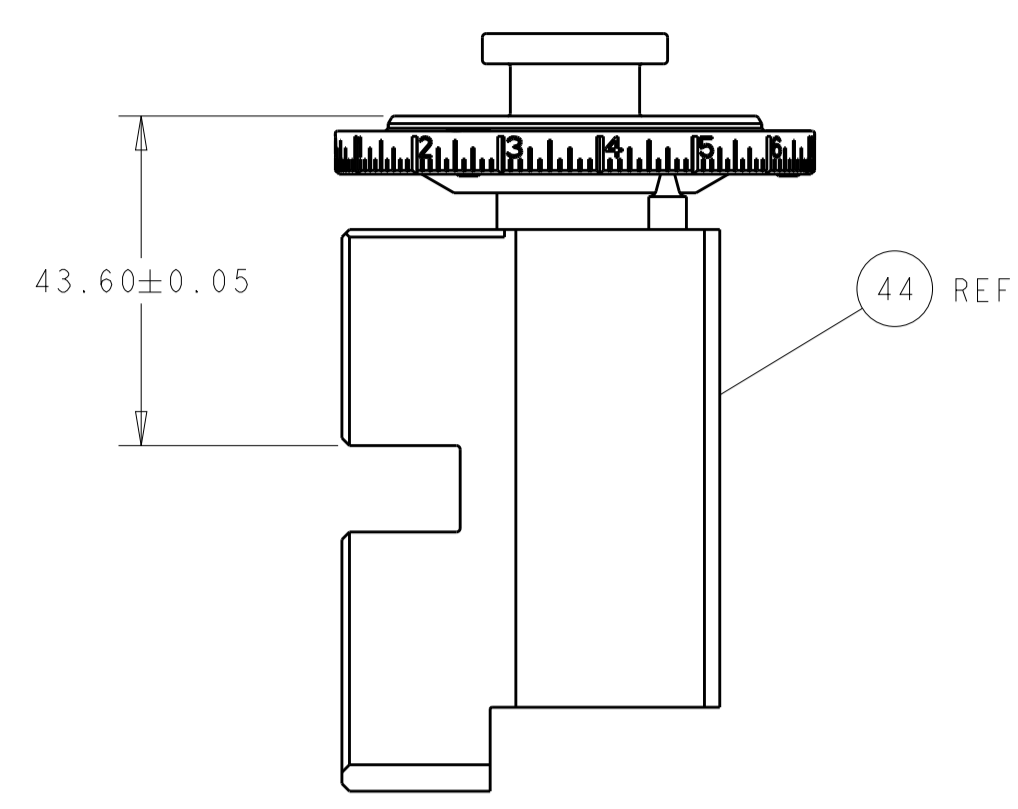
ATLANTIC VERSION
Shown on sheets 1 of 4 & 2 of 4
(Pacific version shown on sheets 3 of 4 & 4 of 4)

LOC	DIST	REVISIONS			
A	66	REV	DATE	BY	APPV
		D	27APR2017	LG	TE
		E	31JUL2018	LG	TE
		F	24APR2019	FL	TE

-	1	1	2119640-1	PUSH ROD, AIR FEED	250
-	1	1	1803259-1	BUSHING, FLANGED	249
-	1	1	2119641-1	FEED CAM, AIR FEED	248
-	1	1	2119082-9	CAM, SNAIL, INSULATION ADJUSTMENT	244
-	1	1	2079764-1	WASHER, WAVE SPRING, CREST-TO-CREST	243
-	1	1	2119083-1	RETAINER, INSULATION DIAL	242
-	1	1	2063440-2	AIR FEED MODULE	238
-	1	1	1-18028-0	WASHER, FLAT, REG M8	192
-	2	2	21045-3	RING, RETAIN, EXTERN, 3/16 CRESCENT	172
-	REF	REF	994970-2	COUNTER, MAGNETIC	164
-	1	1	240638-1	SPRING, FEED FINGER	163
-	1	1	3-23627-7	PIN, RETAIN, GRVD, 3/16 X .854	137
-	1	1	2119955-2	ASSY, LUBRICATOR, END FEED	84
-	1	1	455888-3	SPACER, CRIMPER	83
-	1	1	1-455888-0	SPACER, CRIMPER	82
-	1	1	2119791-9	DEPRESSOR, WIRE	73
-	1	1	1803607-2	DOCUMENTATION PACKAGE	71
-	2	2	2-18032-2	SCR, SET, FLT PNT, M3 X 10.0	70
-	1	1	2119943-1	WASHER, SPACER	69
-	1	1	2119740-1	TAG, IDENTIFICATION	67
-	2	2	2168078-1	SCREW, DRIVE, RH, RoHS, 2 x .188	66
-	1	1	2168083-2	SCR, SKT HD CAP, RoHS, M4 X 8.0	60
-	4	4	2168400-4	SHCS, LOW HEAD, RoHS, M4 X 8	57
-	2	2	2-2168083-6	SCR, SKT HD CAP, RoHS, M4 X 18	56
-	2	2	5018030-1	NUT, HEX, REG, RoHS, M3	54
-	2	2	986965-8	NUT, LOCK, HEX, TORQUE (M4)	53
-	1	1	2119792-2	PAWL, EF, AIR	51
-	1	1	1803382-1	HOLD DOWN, SPRING LOADED	50
-	1	1	18023-9	SCR, SKT HD CAP M4 X 6.0	49
-	1	1	2119655-5	APPLICATOR BASIC ASSEMBLY, EF	46
-	1	1	1803517-1	RAM ASSEMBLY, EF ATLANTIC	44
-	1	1	1803602-1	SCR, BHSC, RoHS (M8 X 25)	41
-	8	8	1-18028-2	WASHER, FLAT, REG M4	33
-	2	2	2168083-9	SCR, SKT HD CAP, RoHS, M4 X 20	31
-	2	2	2168083-2	SCR, SKT HD CAP, RoHS, M4 X 8.0	29
-	1	1	240639-1	STRIPPER (MACHINING)	27
-	2	2	1-2168083-5	SCR, SKT HD CAP, RoHS, M4 X 30	25
-	1	1	1752371-5	PLATE, STRIP GUIDE	24
-	2	2	2-22281-3	SPRING, COMPRESSION	22
-	1	1	1803292-4	DRAG	20
-	1	1	1901696-4	STRIP GUIDE, REAR	19
-	1	1	1901695-4	STRIP GUIDE, FRONT	18
-	4	4	1-2079383-1	SCR, BHSC, RoHS (M6 X 12)	17
-	1	1	4-240641-8	SPACER	16
-	1	1	240644-9	PLATE, REAR SHEAR	11
-	-	-	-	-	10
-	1	1	6-690482-3	PLATE, FRONT SHEAR	9
1	2	1	3-1803426-1	ANVIL, COMBINATION, END FEED	8
-	1	1	1-2217206-0	BLADE, SLUG	7
-	1	1	2-240641-9	SPACER	5
-	1	1	238011-2	BLOCK, CRIMPER SPACER	4
1	2	1	2119582-3	CRIMPER, INSULATION F PREMIUM	3
-	1	1	455888-3	SPACER, CRIMPER	2
1	2	1	456424-4	CRIMPER, WIRE PREMIUM	1
-	77	72	2	PART NO	ITEM NO
-	-	-	-	DESCRIPTION	-

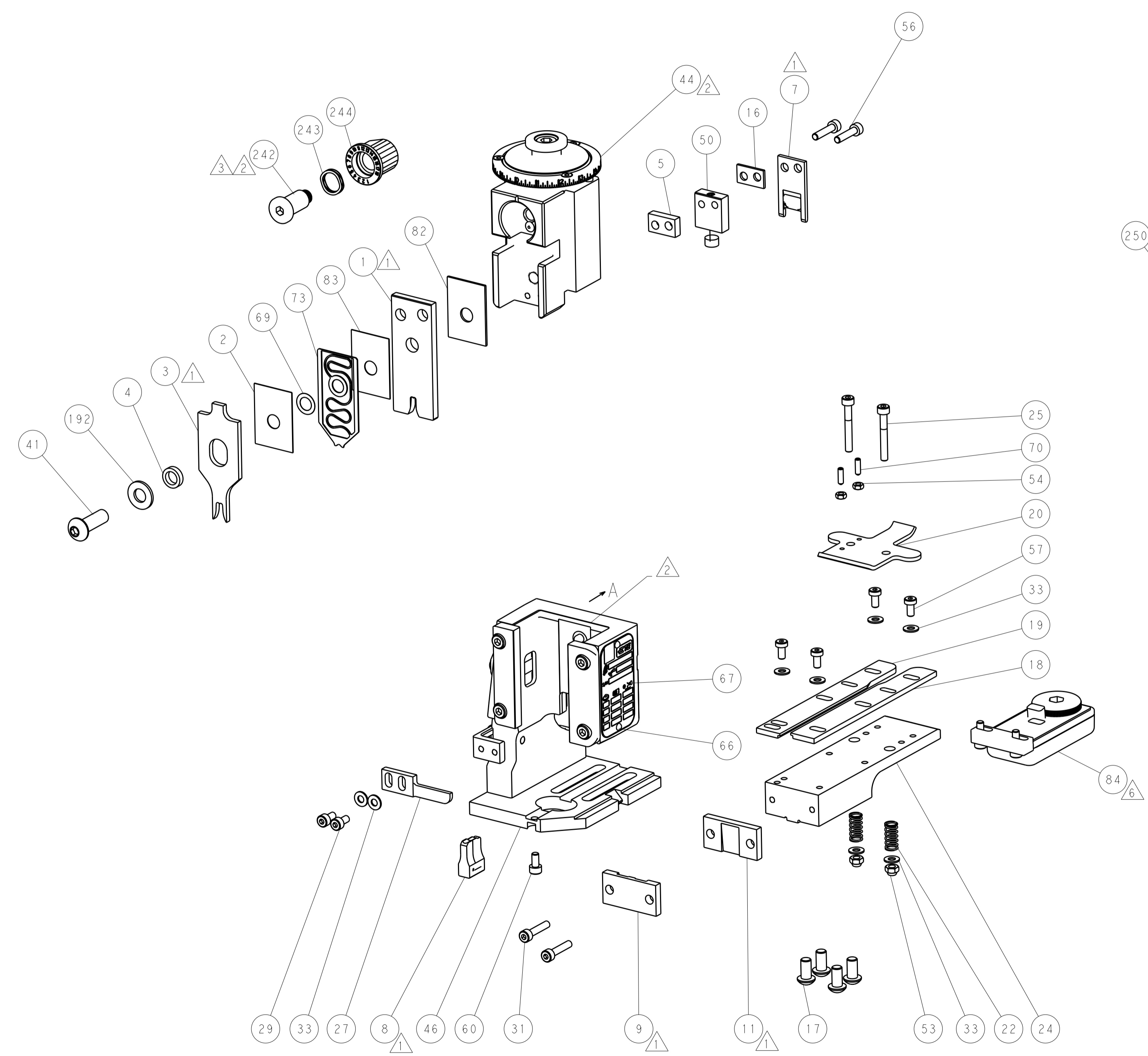
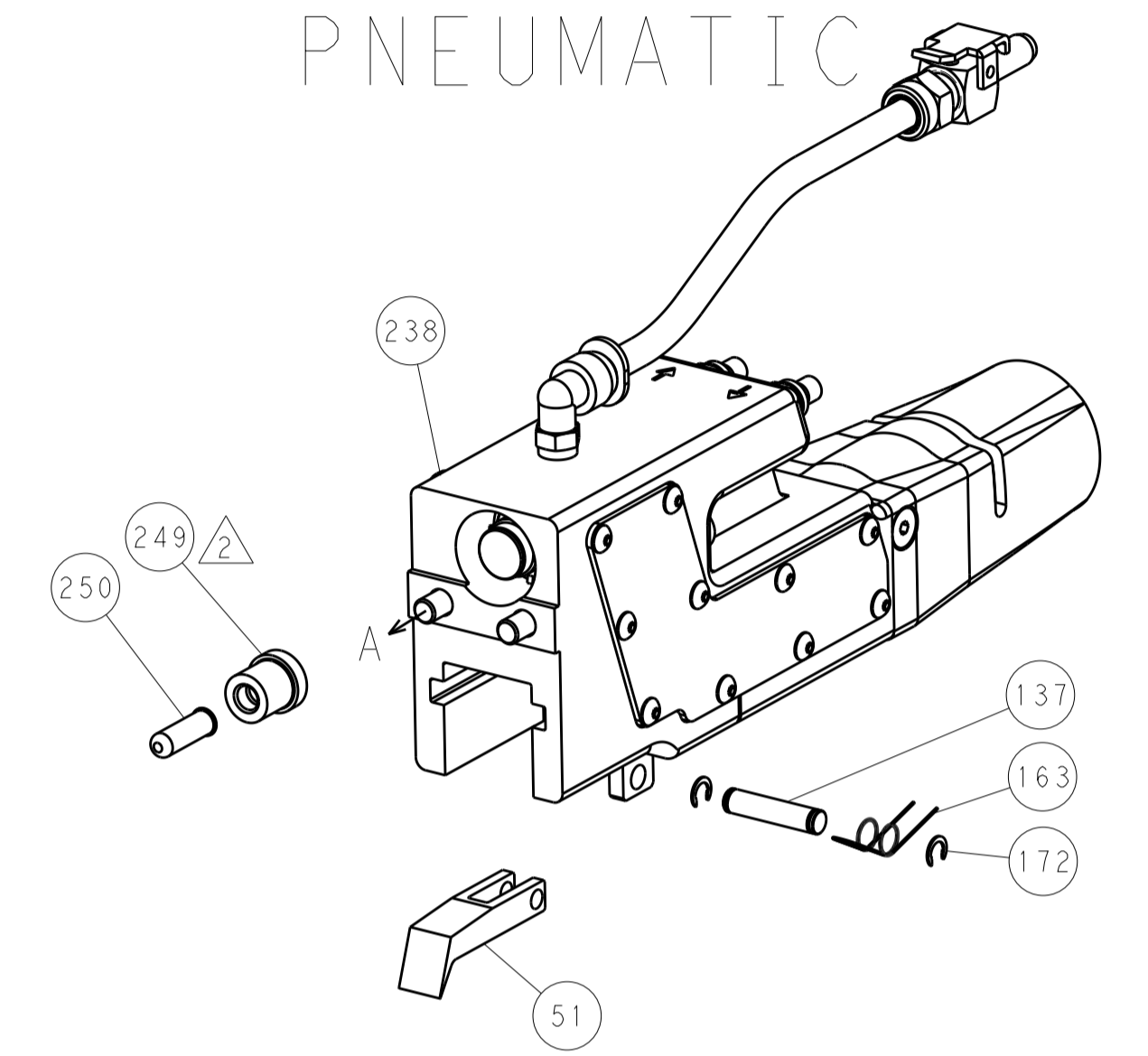
DIMENSIONS:		TOLERANCES UNLESS OTHERWISE SPECIFIED:		DRAWN	
mm	0 PLC ±	1 PLC ±	2 PLC ±	CHK	21MAR2012
	3 PLC ±	4 PLC ±	ANGLES ±	S.XI	21MAR2012
MATERIAL	FINISH	WEIGHT	SCALE	APVD	S.XI 21MAR2012
-	-	-	1:1	NAME	TE Connectivity
Customer Accessible Production Drawing				Harrisburg, PA 17105-3608	
SHEET 1 OF 4				REV F	

LOC		DIST		REVISIONS			
A	66	P	LTM	DESCRIPTION	DATE	DWN	APVD
		-		SEE SHEET 1			

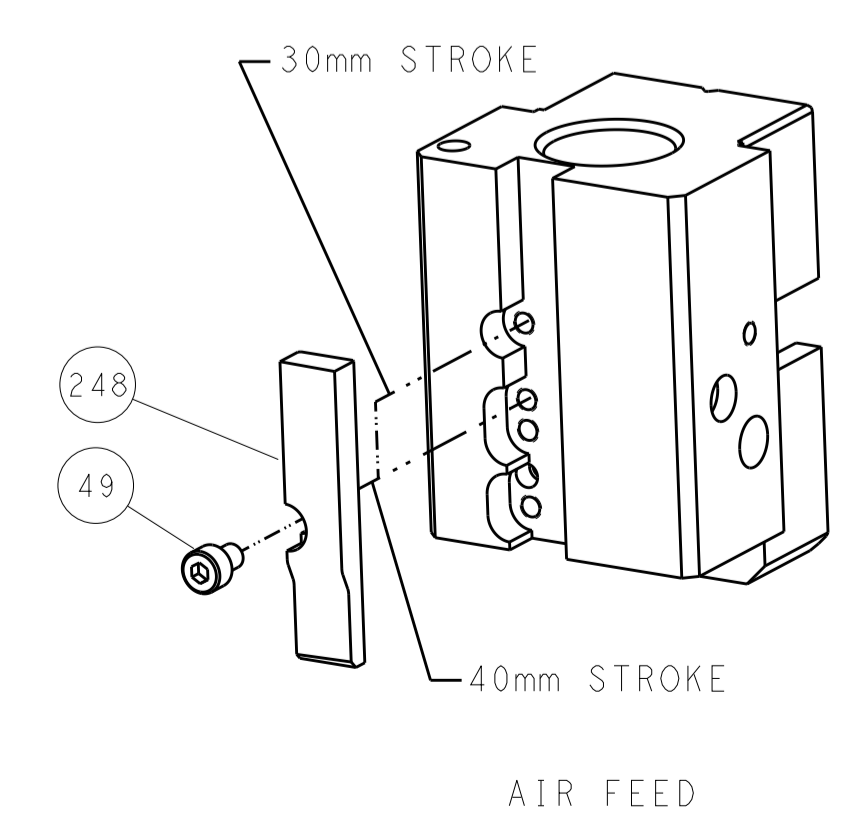


RAM SET-UP

FEED TYPE
 PNEUMATIC



CAM POSITION

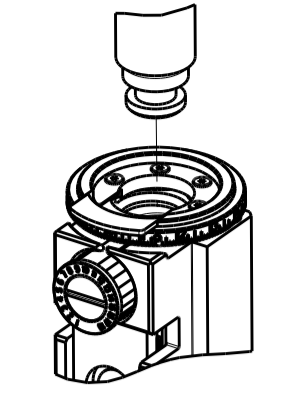


ATLANTIC VERSION
 Shown on sheets 1 of 4 & 2 of 4
 (Pacific version shown on sheets 3 of 4 & 4 of 4)

<small>THIS DRAWING IS UNPUBLISHED. RELEASED FOR PUBLICATION BY TYCO ELECTRONICS CORPORATION. ALL RIGHTS RESERVED.</small>		DWN K. HUANG	Z1MAR2012	TE Connectivity Harrisburg, PA 17105-3608
<small>IT IS THE BUYER'S RESPONSIBILITY TO CONTACT THE SUPPLIER FOR THE LATEST REVISIONS. THIS DRAWING IS UNPUBLISHED. RELEASED FOR PUBLICATION BY TYCO ELECTRONICS CORPORATION. ALL RIGHTS RESERVED.</small>		CHK S. XI	Z1MAR2012	
DIMENSIONS: mm		APVD S. XI	Z1MAR2012	NAME Ocean End Feed Applicator
TOLERANCES UNLESS OTHERWISE SPECIFIED: 0 PLC ± 1 PLC ± 2 PLC ± 3 PLC ± 4 PLC ± ANGLES ±		PRODUCT SPEC		SIZE A1
MATERIAL FINISH		APPLICATION SPEC		CAGE CODE 00779
		RESTRICTED TO		DRAWING NO C=2150248
		WEIGHT		SCALE 1:1
		Customer Accessible Production Drawing		SHEET 2 of 4
				REV F

PART NUMBER	REVISION	DESCRIPTION	FEED TYPE
2-2150248-2	F	FINE CRIMP HEIGHT ADJUST	PNEUMATIC
7-2150248-7	F	CRIMP TOOLING KIT	-

PACIFIC VERSION TERMINATOR
 INTERFACE ADAPTER



APPLICATOR DATA

CRIMP	SIZE	TYPE
WIRE	3.30 mm [.130]	F
INSUL	4.57 mm [.180]	F

APPLICATOR INSTRUCTIONS
 408-35043

TERMINAL DATA: TE TERMINAL TE CRIMP SPECIFICATION

TERMINAL NAME: .250 FASTIN-FASTON TAB

WIRE STRIP LENGTH	INSULATION DIAMETER RANGE
.198-.228 IN [5.03-5.79 mm]	∅.120-.170 IN [3.05-4.32 mm]

TERMINAL APPLICATION SPECIFICATION

TE TERMINAL	TE TERMINAL	TE TERMINAL	TE TERMINAL
60701-1			

WIRE SIZE	CRIMP HEIGHT mm [INCH]	CRIMP HEIGHT REFERENCE SETTING
10 AWG	2.62 +/- 0.05 [1.03 +/- .002]	3.1
12 AWG	2.13 +/- 0.05 [1.084 +/- .002]	7.9
14AWG + 18AWG	2.06 +/- 0.05 [1.081 +/- .002]	8.8
2.50mm2	1.93 +/- 0.05 [1.076 +/- .002]	10.1
14 AWG	1.83 +/- 0.05 [1.072 +/- .002]	11.1



- 1 RECOMMENDED SPARE PARTS
- 2 REFER TO SUPPLIED INSTRUCTION SHEET FOR CLEANING, LUBRICATION & STORAGE OF APPLICATOR.
- 3 APPLY PART NUMBER 2-23419-6 LOCTITE TO THREADS OF ITEM 242.
- 4 CRIMP HEIGHT REFERENCE SETTING WAS THE SETTING USED WHEN THE APPLICATOR WAS QUALIFIED AT THE FACTORY. ADJUSTMENT MAY BE NECESSARY WHEN RUNNING APPLICATOR IN THE FIELD.
- 5 TERMINAL PITCH NOT COMPATIBLE WITH MECHANICAL FEED.
- 6 TERMINAL LUBRICANT IS RECOMMENDED.
- 7. UNLESS SPECIFIED OTHERWISE TORQUE VALUES SHALL BE USED PER DOCUMENT 101-35000.
- 8 10 AWG IS NOT RECOMMENDED FOR THIS TERMINAL.

***WARNING**
 ON INSTALLATION, SET WIRE DISC TO CRIMP HEIGHT REFERENCE SETTING FOR LARGEST WIRE SIZE. CRIMP HEIGHT REFERENCE SETTINGS GREATER THAN THE VALUE SHOWN MAY CAUSE DAMAGE TO THE CRIMP TOOLING. REFER TO THE INSTRUCTION SHEET FOR PROPER SETUP AND ADJUSTMENTS.

PACIFIC VERSION
 Shown on sheets 3 of 4 & 4 of 4
 (Atlantic version shown on sheets 1 of 4 & 2 of 4)

LOC	DIST	REV	DATE	BY	APPV
A	66				

REV	DATE	DESCRIPTION	DATE	BY	APPV
-	1	2119640-1			250
-	1	1803259-1			249
-	1	2119082-9			244
-	1	2079764-1			243
-	1	2119083-1			242
-	1	2063440-2			238
-	1	1-18028-0			192
-	4	2079383-9			186
-	2	21045-3			172
-	REF	994970-2			164
-	1	240638-1			163
-	1	2119641-2			152
-	1	2168083-8			144
-	1	2119655-6			141
-	1	1803518-1			140
-	1	3-23627-7			137
-	1	2119955-2			84
-	1	455888-3			83
-	1	1-455888-0			82
-	1	2119791-9			73
-	1	1803607-2			71
-	2	2-18032-2			70
-	1	2119943-1			69
-	1	2119740-1			67
-	2	2168078-1			66
-	4	2168400-4			57
-	2	2-2168083-6			56
-	2	5018030-1			54
-	2	986965-8			53
-	1	2119792-2			51
-	1	1803382-1			50
-	1	18023-9			49
-	1	1803602-1			41
-	8	1-18028-2			33
-	2	2168083-9			31
-	2	2168083-2			29
-	1	240639-1			27
-	2	1-2168083-5			25
-	1	1752371-5			24
-	2	2-22281-3			22
-	1	1803292-4			20
-	1	1901696-4			19
-	1	1901695-4			18
-	1	4-240641-8			16
-	1	240644-9			11
-	-	-			10
-	1	6-690482-3			9
1	1	3-1803426-1			8
-	1	1-2217206-0			7
-	1	2-240641-9			5
-	1	238011-2			4
1	1	2119582-3			3
-	1	455888-3			2
1	1	456424-4			1
-	77-22	PART NO			ITEM NO

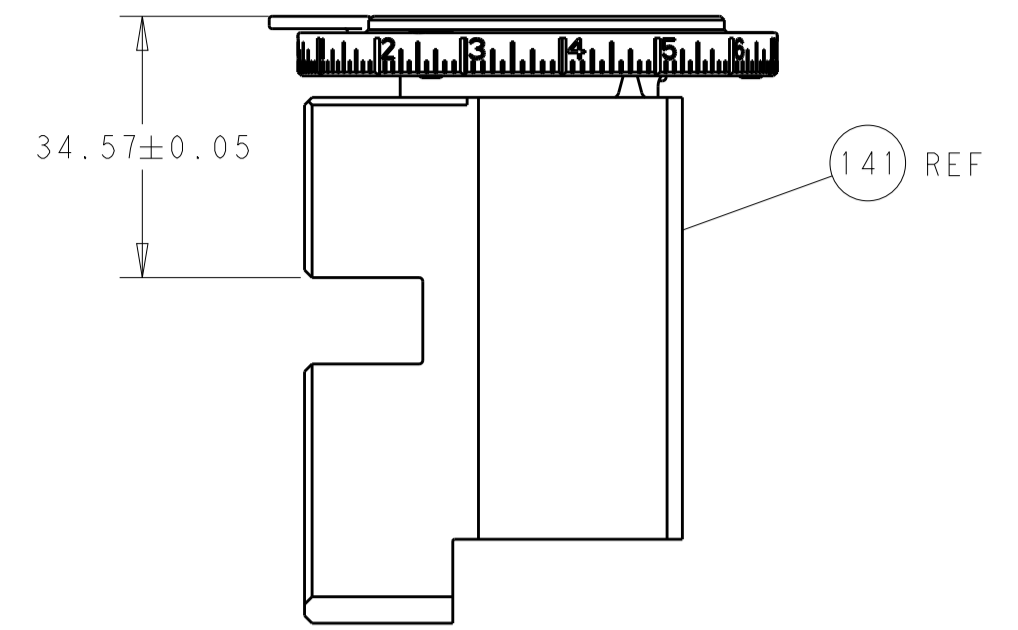
DIMENSIONS:	TOLERANCES UNLESS OTHERWISE SPECIFIED:	DATE	BY	APPV
mm	0 PLC ± 1 PLC ± 2 PLC ± 3 PLC ± 4 PLC ± ANGLES ±	21MAR2012	H. HUANG	S. XI
MATERIAL	FINISH	21MAR2012	S. XI	ZIMAR2012
Customer Accessible Production Drawing		SCALE	1:1	SHEET 3 OF 4

STE TE Connectivity
 Harrisburg, PA 17105-3608

Ocean End Feed Applicator

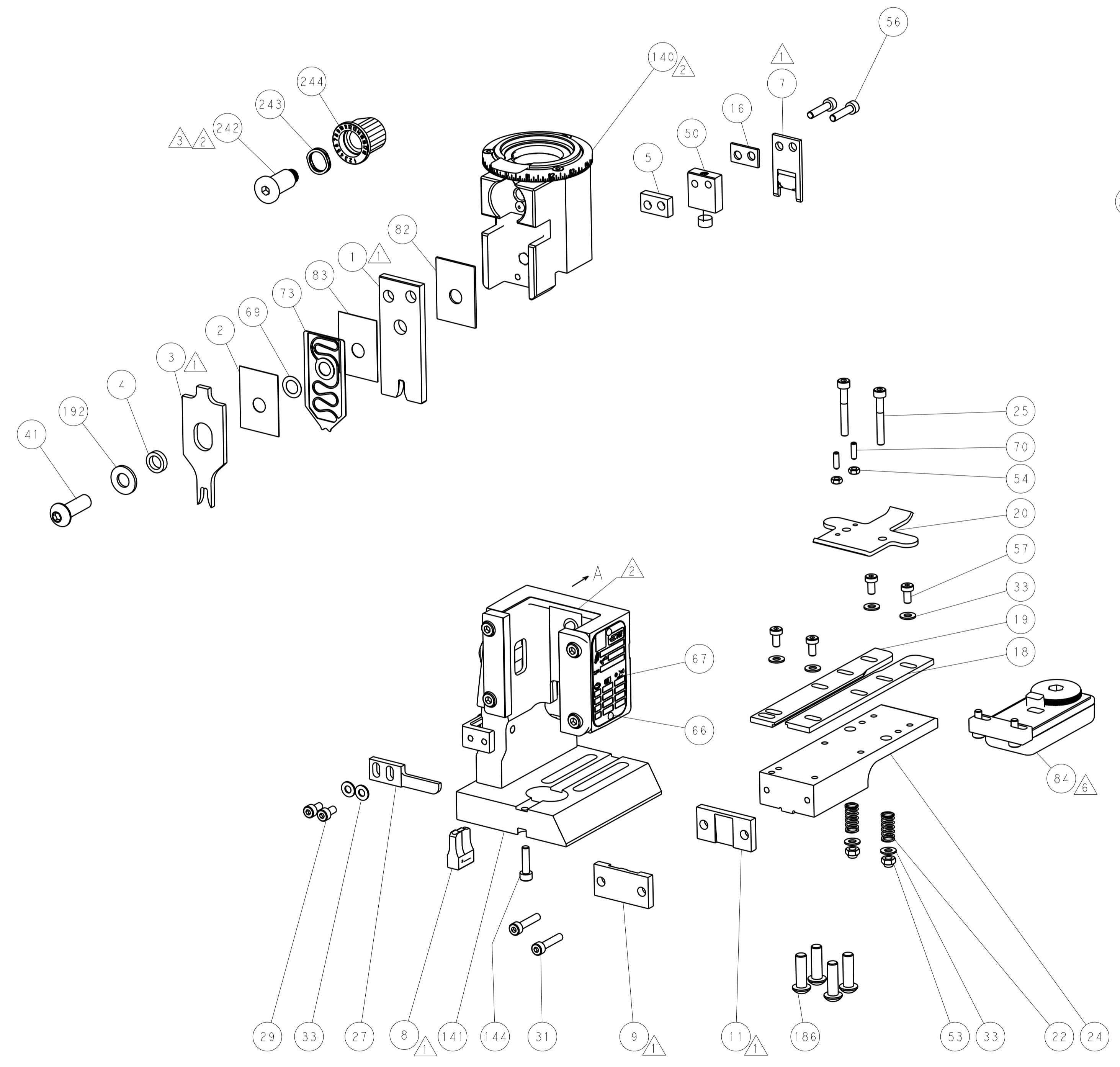
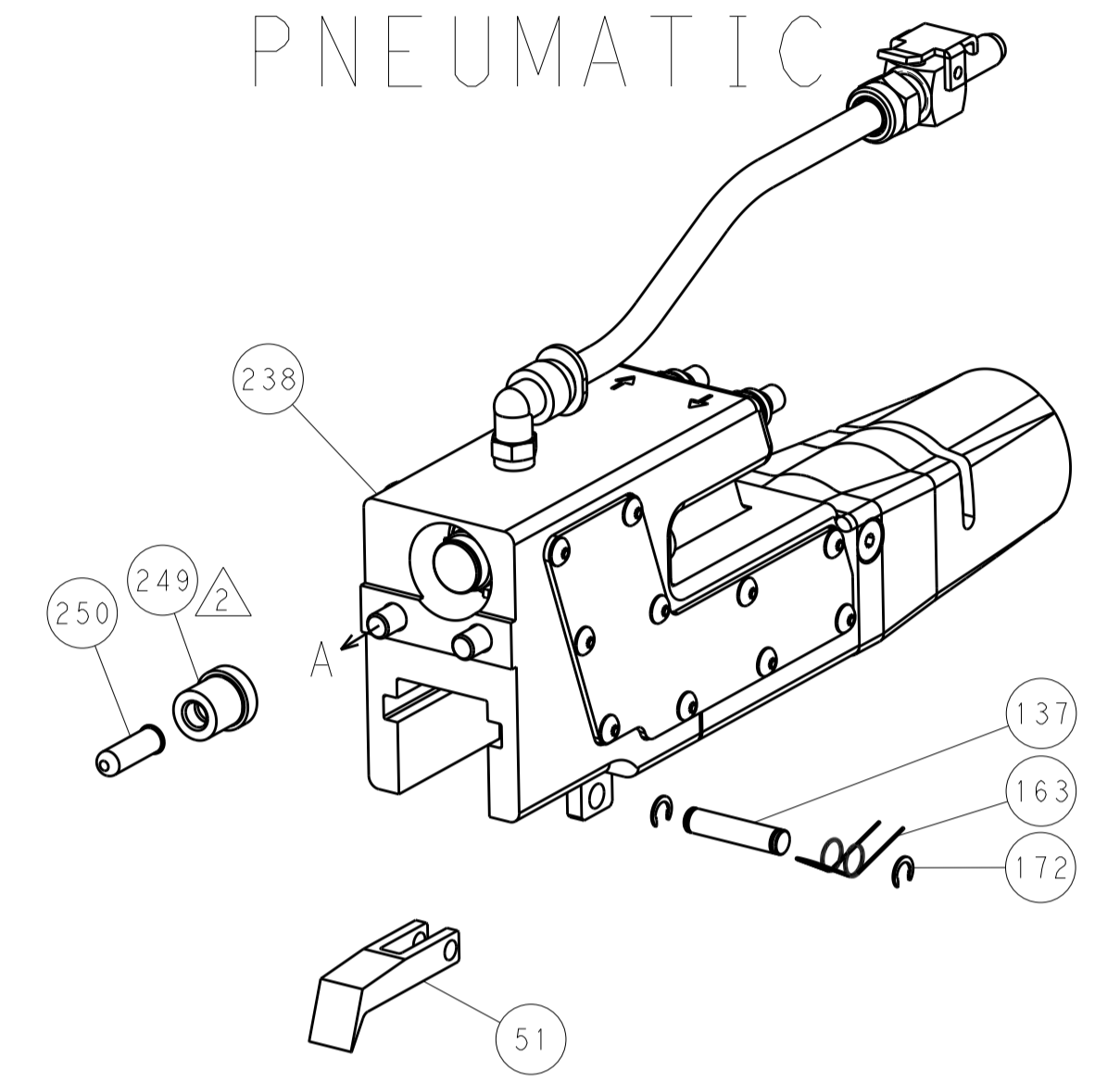
SIZE: A1 CAGE CODE: 00779 DRAWING NO: 2150248

LOC		DIST		REVISIONS			
A	66	P	LTM	DESCRIPTION	DATE	DWN	APVD
		-	-	SEE SHEET 1	-	-	-

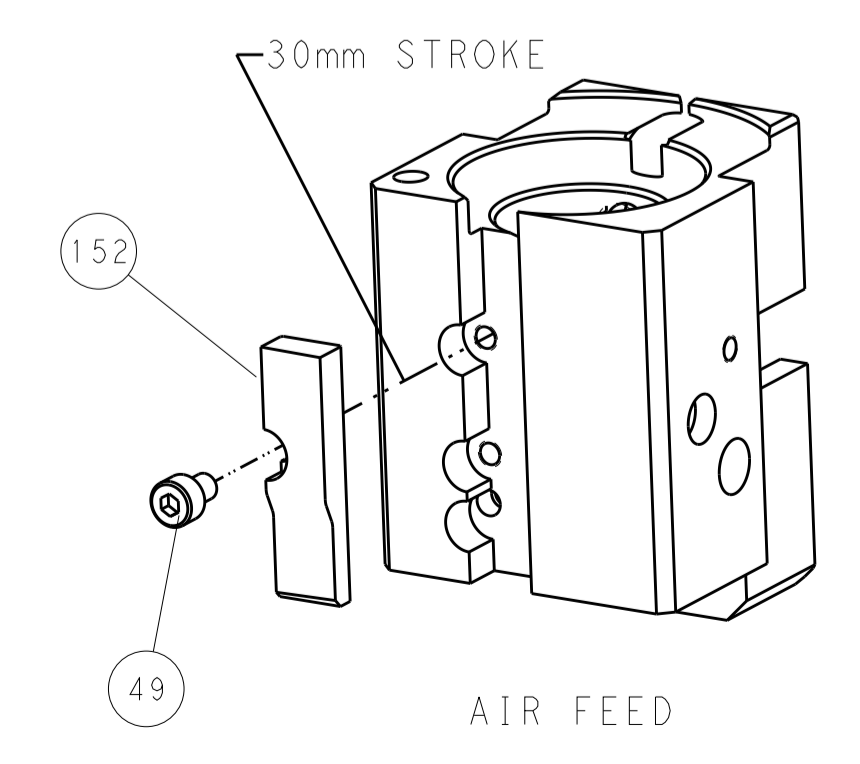


RAM SET-UP

FEED TYPE
 PNEUMATIC



CAM POSITION



AIR FEED

PACIFIC VERSION
 Shown on sheets 3 of 4 & 4 of 4
 (Atlantic version shown on sheets 1 of 4 & 2 of 4)

<small>THIS DRAWING IS UNPUBLISHED. RELEASED FOR PUBLICATION BY TYCO ELECTRONICS CORPORATION. ALL RIGHTS RESERVED.</small>		DWN: K. HUANG CHK: S. XI APVD: S. XI	Z1MAR2012 Z1MAR2012 Z1MAR2012	TE Connectivity Harrisburg, PA 17105-3608
DIMENSIONS: mm 		TOLERANCES UNLESS OTHERWISE SPECIFIED: 0 PLC ± 1 PLC ± 2 PLC ± 3 PLC ± 4 PLC ± ANGLES ±	NAME: Ocean End Feed Applicator PRODUCT SPEC: APPLICATION SPEC: WEIGHT: SCALE: 1:1	RESTRICTED TO: SIZE: A1 CAGE CODE: 00779 DRAWING NO: C=2150248 SHEET 4 OF 4 REV F