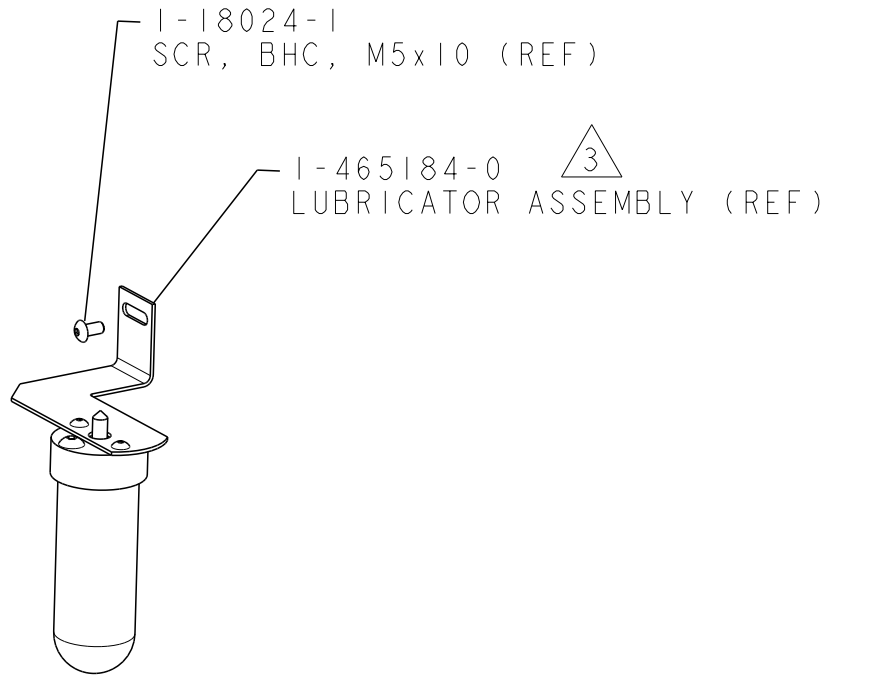


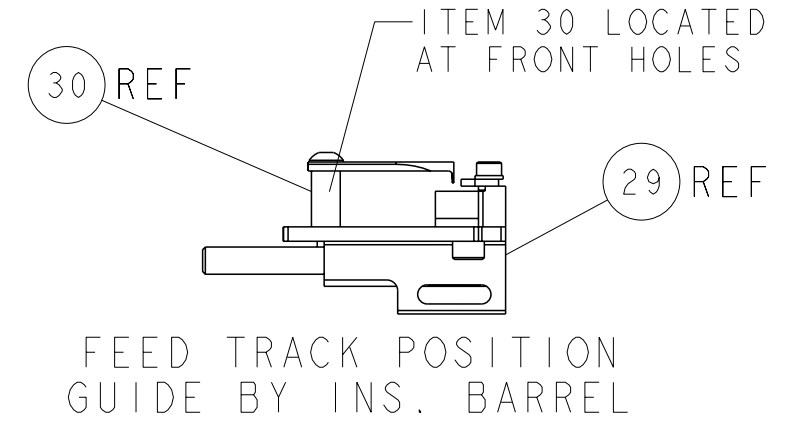
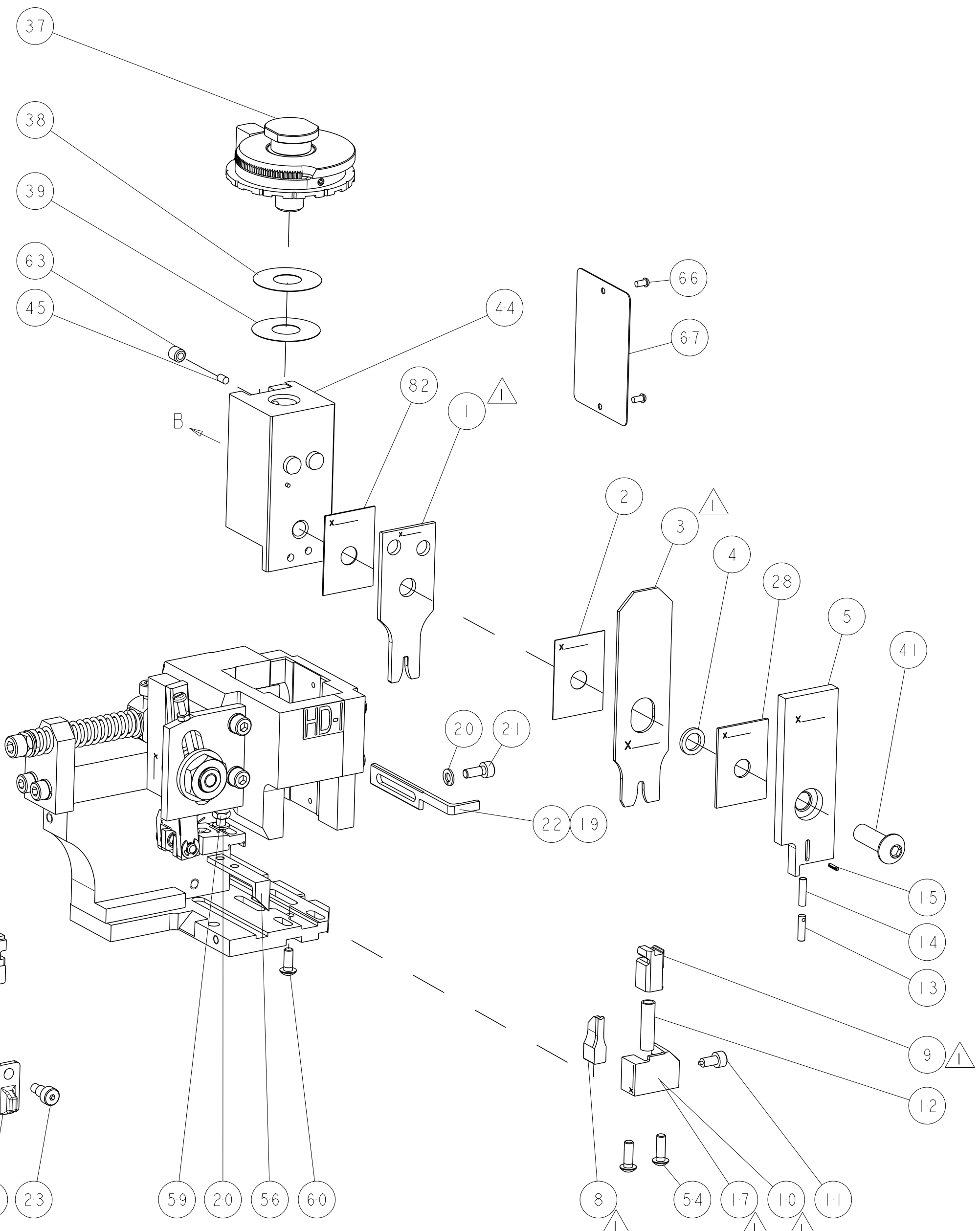
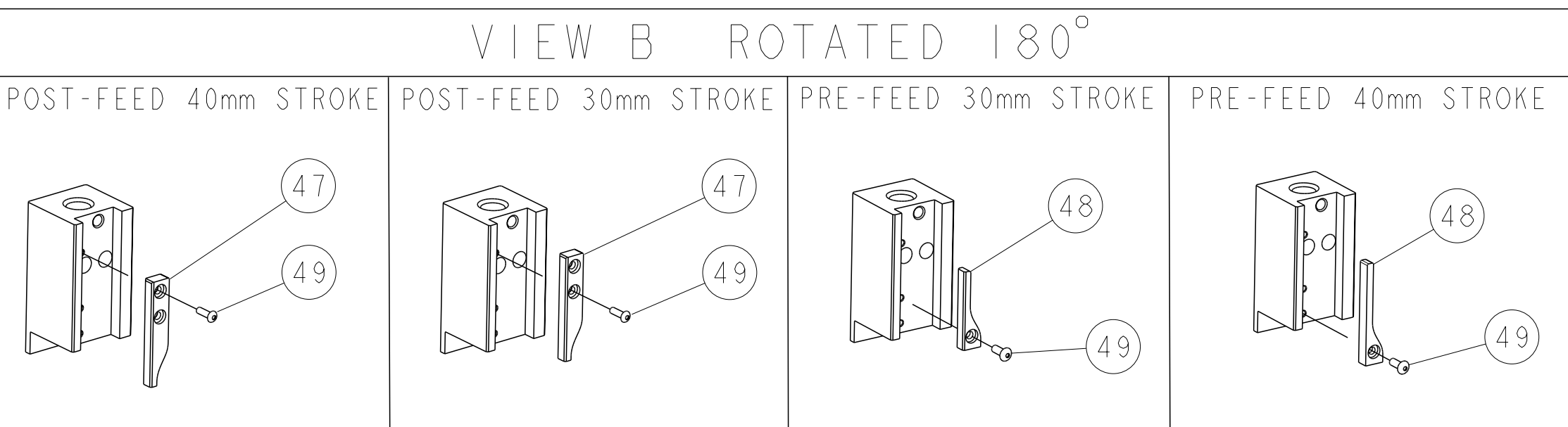
COPYRIGHT	RELEASED FOR PUBLICATION			
ALL RIGHTS RESERVED.				
PART NUMBER	REV	TERMINATOR	FEED TYPE	DESCRIPTION
1530067-1	B	LEADMAKER	MECH POST FEED	CUTS CARRIER
1530067-2	B	BENCH	MECH PRE FEED	CUTS CARRIER
1530067-6	B	LEADMAKER	MECH POST FEED	CONTINUOUS CARRIER
7-1530067-1	B	LEADMAKER	MECH POST FEED	-1 AND SPARE PARTS
7-1530067-2	B	BENCH	MECH PRE FEED	-2 AND SPARE PARTS
7-1530067-6	B	LEADMAKER	MECH POST FEED	-6 AND SPARE PARTS
7-1530067-7	A	-	-	SPARE PARTS KIT

CRIMP DATA		TE TERMINAL	TE CRIMP SPECS
TERMINAL NAME: BUTTON CONTACT			
CRIMP	SIZE	TYPE	RANGE
WIRE	2.29 [1.090 IN]	F	0.5-1.4mm <sup>2</sup> or 20-16 AWG
INSUL	3.30 [1.30 IN]	O	2.29-3.18 [1.090-1.25 IN] DIA
WIRE STRIP LENGTH	2.74-3.51 [1.108-1.38 IN]	APPL INSTRUCTIONS	408-8322 & 408-8490
TERMINAL APPL SPEC	-	FEED	13.34 [1.525 IN]
TERMINALS APPLIED			
WIRE SIZE	CRIMP HEIGHT	REF SETTING	
1.30mm <sup>2</sup> (16AWG)	1.55 ±0.05 [1.061 ±.002 IN]	B7	
0.82mm <sup>2</sup> (18AWG)	1.37 ±0.05 [1.054 ±.002 IN]	D1	
0.51mm <sup>2</sup> (20AWG)	1.27 ±0.05 [1.050 ±.002 IN]	D9	



- RECOMMENDED SPARE PARTS.
- GREASE RAM, CAM, CAM FOLLOWER AND FEED ROD LIGHTLY.
- CERTAIN TERMINALS REQUIRE LUBRICATION. REFER TO THE APPLICATOR INSTRUCTION SHEET FOR MORE INFORMATION.
- LUBRICATE DAILY PER THE APPLICATOR INSTRUCTION SHEET SUPPLIED WITH THE APPLICATOR.

**\* WARNING**  
ON INSTALLATION, SET WIRE DISC TO LARGEST WIRE SIZE SETTING. USE OF SETTINGS BELOW MIN. REQUIRED CRIMP HEIGHT SETTING WILL CAUSE DAMAGE TO CRIMP TOOLING.



LOC		DIST		REVISONS			
P	LTB	DESCRIPTION	DATE	OWN	APVD		
A		RELEASED	27FEB2009	LG	GB		
B		ECR-11-014439	12JUL2011	MY	TE		

SET UP GAGE 458637-1							ITEM NO	DESCRIPTION	DATE	OWN	APVD
-	-	-	-	-	-	-	-	-	-	-	-
-	-	-	-	-	-	-	-	-	-	-	-
-	1	1	1	1	1	1	1338705-3	DOCUMENTATION PACKAGE			
-	-	-	-	-	-	-	-	-			
-	-	-	-	-	-	-	-	-			
-	-	-	-	-	-	-	-	-			
-	1	1	1	1	1	1	461264-5	PLATE, IDENTIFICATION			
-	2	2	2	2	2	2	21017-2	SCREW, DRIVE			
-	-	-	-	-	-	-	-	-			
-	-	-	-	-	-	-	-	-			
-	1	1	1	1	1	1	3-18031-0	SCR, SET, CUP POINT M6 X 6.0			
-	-	-	-	-	-	-	-	-			
-	2	2	2	2	2	2	2-18032-5	SCR, SET, FLT POINT M5 X 20.0			
-	1	1	1	1	1	1	18024-7	SCR, BTN SKT HD CAP (M4 X 10.0)			
-	1	1	1	1	1	1	5-18022-2	SCR, HEX HD CAP M4 X 8.0			
-	-	-	-	-	-	-	-	-			
-	-	-	-	-	-	-	-	-			
-	1	1	1	1	1	1	1338685-1	PAWL, FEED			
-	-	-	-	-	-	-	-	-			
-	2	2	2	2	2	2	18024-8	SCR, BTN SKT HD CAP (M4 X 12.0)			
-	-	-	-	-	-	-	-	-			
-	-	-	-	-	-	-	-	-			
-	-	-	-	-	-	-	-	-			
-	1	1	1	1	1	1	18024-3	SCR, BTN SKT HD CAP (M3 X 10.0)			
-	-	-	-	-	-	-	1338675-1	CAM, UNIVERSAL PRE FEED			
-	1	1	1	1	1	1	1338676-1	CAM, UNIVERSAL POST-FEED			
-	1	1	1	1	1	1	1320999-3	APPLICATOR SUBASSEMBLY, HDI			
-	1	1	1	1	1	1	690191-1	PLUG, NYLON			
-	1	1	1	1	1	1	1338660-1	RAM			
-	-	-	-	-	-	-	-	-			
-	-	-	-	-	-	-	-	-			
-	1	1	1	1	1	1	2-18024-6	SCR, BTN SKT HD CAP (M8 X 25.0)			
-	-	-	-	-	-	-	-	-			
-	1	1	1	1	1	1	690125-1	SHIM SUB-ASSY			
-	1	1	1	1	1	1	469367-1	SHIM			
-	1	1	1	1	1	1	879103-2	FINE ADJUST HEAD ASSEMBLY			
-	-	-	-	-	-	-	-	-			
-	-	-	-	-	-	-	-	-			
-	2	2	2	2	2	2	1-18024-0	SCR, BTN SKT HD CAP (M4 X 20.0)			
-	1	1	1	1	1	1	18027-2	WASHER, FLAT, REG M4			
-	1	1	1	1	1	1	1-18023-2	SCR, SKT HD CAP M4 X 12.0			
-	1	1	1	1	1	1	1-1320908-5	SPACER, STRIP GUIDE			
-	1	1	1	1	1	1	1633073-1	STRIP GUIDE ASSEMBLY			
-	1	1	1	1	1	1	1-455888-0	SPACER, CRIMPER			
-	2	2	2	2	2	2	1-22284-0	SPRING, COMPRESSION			
-	1	1	1	1	1	1	356835-1	LEVER, DRAG RELEASE			
-	1	1	1	1	1	1	240792-1	DRAG, TERMINAL			
-	1	1	1	1	1	1	1320928-1	PLATE, STRIP GUIDE			
-	1	1	1	1	1	1	980371-4	SCR, SKT HD SHLDR 5.0 DIA X 6.0			
-	1	-	1	1	-	1	690472-2	STRIPPER			
-	1	1	1	1	1	1	1-18023-1	SCR, SKT HD CAP M4 X 10.0			
-	2	2	2	2	2	2	18025-2	WASHER, SPRG LOCK, REG M4			
-	-	1	-	-	1	-	690472-1	STRIPPER			
-	-	-	-	-	-	-	-	-			
-	1	-	-	1	-	-	1338684-1	SHEAR HOLDER, FRONT			
-	-	-	-	-	-	-	-	-			
-	1	1	1	1	1	1	21028-2	PIN, SLOTTED SPRING .062 X .250			
-	1	1	1	1	1	1	1-22278-0	SPRING, COMPRESSION			
-	1	1	1	1	1	1	854769-4	HOLDER, INS			
-	1	1	1	1	1	1	3-22280-3	SPRING, COMPRESSION			
-	1	1	1	1	1	1	1-356885-0	STOP, SHEAR			
-	-	1	1	-	1	1	1320921-1	SHEAR HOLDER, FRONT, CUT			
-	1	1	1	1	1	1	454276-1	FLOATING SHEAR, FRONT			
-	1	2	2	2	1	1	8-1633139-1	ANVIL, COMBINATION			
-	-	-	-	-	-	-	-	-			
-	-	-	-	-	-	-	-	-			
-	-	-	-	-	-	-	-	-			
-	1	1	1	1	1	1	854772-1	DEPRESSOR, SHEAR			
-	1	1	1	1	1	1	1-238011-3	BLOCK, CRIMPER SPACER			
-	1	2	2	2	1	1	1-456135-3	CRIMPER, INSULATION O PREMIUM			
-	1	1	1	1	1	1	455888-2	SPACER, CRIMPER			
-	1	2	2	2	1	1	1-456406-8	CRIMPER, WIRE PREMIUM			

ITEM NO	DESCRIPTION	ITEM NO							
-	-	84							
-	-	83							
-	1	1	1	1	1	455888-5	SPACER, CRIMPER	82	
-	-	81							
-	-	80							
-	-	79							
-	-	78							
-	-	77							
-	-	76							
-	-	75							
-	-	74							
-77	-76	-72	-71	-6	-2	-1	PART NO	DESCRIPTION	ITEM NO

THIS DRAWING IS A CONTROLLED DOCUMENT.

DWG: 04FEB2009  
 CHK: J. WRIGHT  
 G. BALLEY 04FEB2009  
 APVD: J. ELBLIN 04FEB2009

**STE** TE Connectivity  
 FINE ADJUST SIDE FEED HDI APPLICATOR

DIMENSIONS: mm [IN]  
 TOLERANCES UNLESS OTHERWISE SPECIFIED:  
 9 PLC ±  
 1 PLC ±  
 5 PLC ±  
 4 PLC ±  
 ANGLES ±  
 FINISH ±

APPLICATION SPEC: See Table  
 MATERIAL: -  
 WEIGHT: -

SIZE: A100779  
 CAGE CODE: C=1530067  
 DRAWING NO: A100779  
 SCALE: 3:5  
 SHEET: 1 OF 11  
 REV: B