

PART NUMBER	REV	FIRST USED	TERMINATOR	FEED TYPE	DESCRIPTION
1426529-1	B		-	LEADMAKER	MECH POST FEED CUTS CARRIER
1426529-2	B		-	BENCH	MECH PRE FEED CUTS CARRIER
1426529-6	B		-	LEADMAKER	MECH POST FEED CONTINUOUS CARRIER
7-1426529-1	B		-	LEADMAKER	MECH POST FEED -1 AND SPARE PARTS
7-1426529-2	B		-	BENCH	MECH PRE FEED -2 AND SPARE PARTS
7-1426529-6	B		-	LEADMAKER	MECH POST FEED -6 AND SPARE PARTS
7-1426529-7	A		-	-	SPARE PARTS KIT

CRIMP DATA AMP TERMINAL AMP CRIMP SPECS

CRIMP	SIZE	TYPE	RANGE
WIRE	1.07 [.042 IN]	F	28-24 AWG
INSUL	1.40 [.055 IN]	0	0.76-1.00 [.030-.040 IN]
WIRE STRIP LENGTH	2.50 [.098 IN]		APPL INSTRUCTION 408-8322

TERMINAL	FEED
APPL SPEC 114-19051	6.00 [.236 IN]

TERMINALS APPLIED

338096	-	-	-	-	-
-	-	-	-	-	-
-	-	-	-	-	-
-	-	-	-	-	-
-	-	-	-	-	-
-	-	-	-	-	-
-	-	-	-	-	-
-	-	-	-	-	-
-	-	-	-	-	-
-	-	-	-	-	-

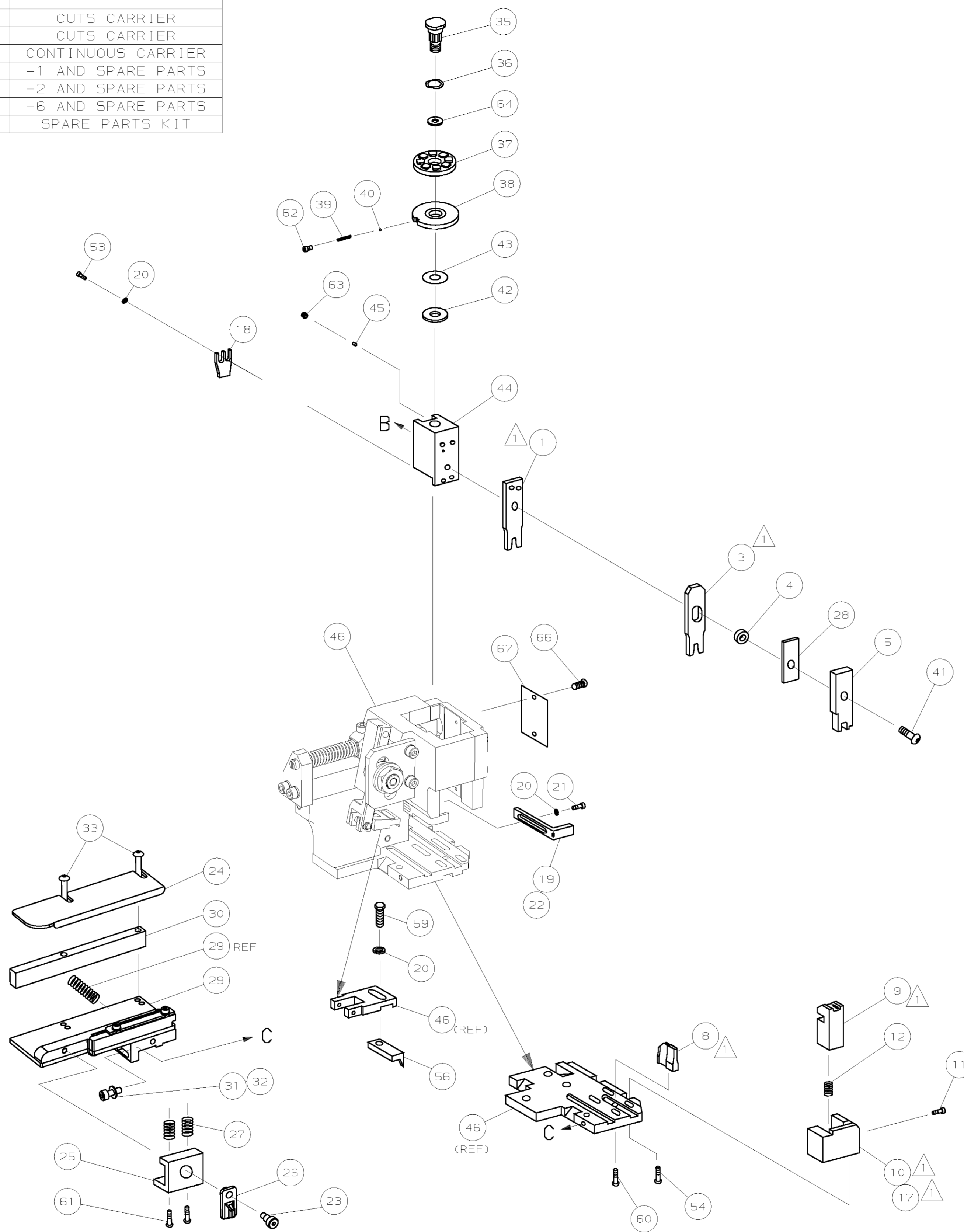
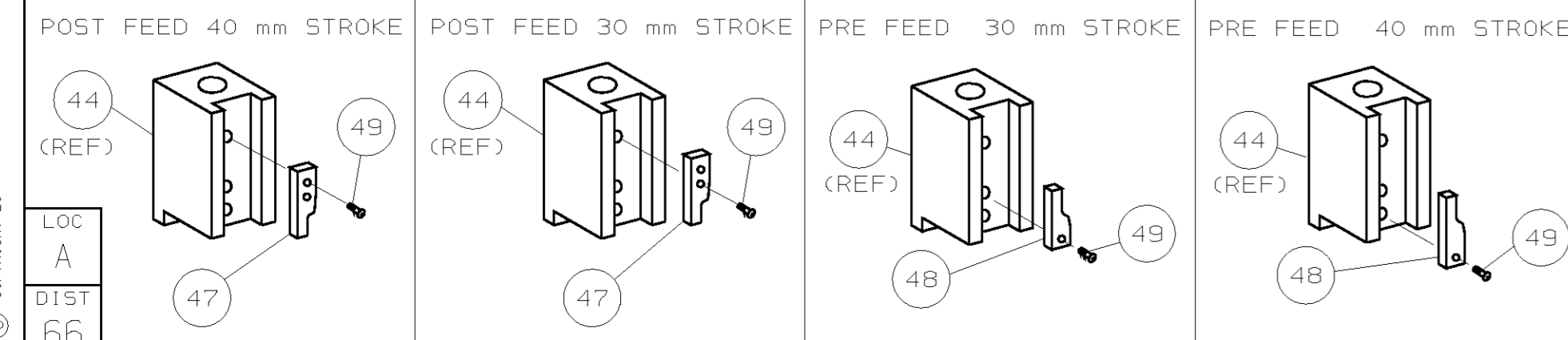
WIRE SIZE	CRIMP HEIGHT	PIN PN AND LENGTH [IN]
24 AWG	0.79 ±0.05 [.031 ±.002 IN]	4-354779-0 [.3190]
26 AWG	0.74 ±0.05 [.029 ±.002 IN]	4-354779-4 [.3210]
28 AWG	0.66 ±0.05 [.026 ±.002 IN]	5-354779-0 [.3240]

THIS DRAWING IS UNRELEASED. LAYOUT L1426529

SET UP GAGE 458637-3

- RECOMMENDED SPARE PARTS.
- GREASE RAM, CAM, CAM FOLLOWER AND FEED ROD LIGHTLY.
- LUBRICATE DAILY PER THE APPLICATOR INSTRUCTION SHEET SUPPLIED WITH THE APPLICATOR.

VIEW B ROTATED 180°



-	1	1	1	1	1	1	1426529	PRINT, APPLICATOR LOG SHEET	73
-	1	1	1	1	1	1	1338705-1	DOCUMENTATION PACKAGE	71
									70
									69
									68
-	1	1	1	1	1	1	461264-1	PLATE, IDENTIFICATION	67
-	2	2	2	2	2	2	21017-2	SCR, DRIVE (#2x.19) ID PLATE	66
									65
-	1	1	1	1	1	1	986950-1	WASHER, FLAT PRECISION	64
-	1	1	1	1	1	1	3-18031-0	SCR, SKT SET (M6X6) RAM	63
-	1	1	1	1	1	1	18023-9	SCR, SHC (M4X6) INS DISC	62
-	2	2	2	2	2	2	1-18024-4	SCR, BHC (M5X20) DRAG	61
-	1	1	1	1	1	1	18024-7	SCR, BHC (M4X10) ANVIL	60
-	1	1	1	1	1	1	5-18022-2	SCR, HEX (M4X8) FEED FINGER	59
									58
									57
-	1	1	1	1	1	1	1338685-1	PAWL, FEED	56
									55
-	2	2	2	2	2	2	18024-8	SCR, BHC (M4X12) SHEAR HOLDER	54
-	2	2	2	2	2	2	18023-9	SCR, SKT CAP (M4X6) HOLD DOWN	53
									52
									51
									50
-	1	1	1	1	1	1	18024-3	SCR, BHC (M3X10) CAM	49
-	-	-	-	-	-	-	1338675-1	CAM, PRE FEED 30 & 40 mm ST	48
-	1	-	1	1	-	1	1338676-1	CAM, POST FEED 30 & 40 mm ST	47
-	1	1	1	1	1	1	1320999-3	APPLICATOR BASIC SUBASSY	46
-	1	1	1	1	1	1	690191-1	PLUG, NYLON	45
-	1	1	1	1	1	1	1338660-3	RAM	44
-	1	1	1	1	1	1	690125-1	WASHER, LAMINATED	43
-	1	1	1	1	1	1	690124-1	WASHER, RAM	42
-	1	1	1	1	1	1	2-18024-6	SCR, BHC (M8X25) RAM	41
-	1	1	1	1	1	1	23241-1	BALL, STEEL	40
-	1	1	1	1	1	1	2-22278-7	SPRING, COMPRESSION	39
-	1	1	1	1	1	1	1320922-1	DISC, INSULATION	38
-	1	1	1	1	1	1	354777-1	WIRE DISC, PLASTIC	37
-	1	1	1	1	1	1	22480-5	WASHER, SPRING	36
-	1	1	1	1	1	1	690212-1	POST, RAM	35
									34
-	2	2	2	2	2	2	1-18024-0	SCR, BHC (M4X20) STRIP GUIDE	33
-	1	1	1	1	1	1	18027-2	WASHER, FLAT (M4)	32
-	1	1	1	1	1	1	1-18023-2	SCR, SKT CAP (M4X12) MOUNT BLOCK	31
-	1	1	1	1	1	1	1320908-9	SPACER, STRIP GUIDE	30
-	1	1	1	1	1	1	1633073-1	STRIP GUIDE PLATE ASSY	29
-	1	1	1	1	1	1	455888-1	SPACER, FRONT SHEAR DEP	28
-	2	2	2	2	2	2	1-22284-0	SPRING, DRAG	27
-	1	1	1	1	1	1	356835-1	LEVER, DRAG RELEASE	26
-	1	1	1	1	1	1	240792-1	DRAG, TERMINAL	25
-	1	1	1	1	1	1	1320928-1	PLATE, STRIP GUIDE	24
-	1	1	1	1	1	1	980371-4	SCR, SHC SHLD	23
-	1	-	1	1	-	1	690472-8	STRIPPER	22
-	1	1	1	1	1	1	1-18023-1	SCR, SHC (M4X10) STRIPPER	21
-	4	4	4	4	4	4	18025-2	WASHER, LOCK (M4) STRIPPER	20
-	-	1	-	-	1	-	690472-8	STRIPPER	19
-	1	1	1	1	1	1	1-690518-1	HOLDER, TERMINAL	18
-	1	-	-	1	-	-	1338684-1	HOLDER, SHEAR, FRONT (NO-CUT)	17
									16
									15
									14
									13
-	1	1	1	1	1	1	5-22280-0	SPRING, SHEAR	12
-	1	1	1	1	1	1	356885-4	STOP, SHEAR	11
-	-	1	1	-	1	1	1320921-1	HOLDER, SHEAR, FRONT (CUT)	10
-	1	1	1	1	1	1	462006-1	SHEAR, FLOAT (FRONT)	9
1	2	2	2	1	1	1	4-1333200-5	ANVIL	8
									7
									6
-	1	1	1	1	1	1	2-455889-0	DEPRESSOR, SHEAR (FRONT)	5
-	1	1	1	1	1	1	1-238011-6	SPACER, BLOCK CRIMPER	4
1	2	2	2	1	1	1	5-683454-9	CRIMPER, INSULATION	3
									2
1	2	2	2	1	1	1	3-456401-0	CRIMPER, WIRE	1

RELEASED FOR PUBLICATION

BY AMP INCORPORATED. ALL RIGHTS RESERVED.

THIS DRAWING IS UNRELEASED.

AMP 1756 REV 3-92

02-MAR-05 10:11:51 eb003653

REVISION	DATE	DESCRIPTION	BY	CHK	APP
B	SEE ECN 015A-0156-05	LJL MAR05			
A	SEE ECN 015A-0819-04	LJL NOV04			
P	REVISION RECORD	APP			

SCALE	DWG NO	REV
-	1426529	B

REVISION OF EACH ASSY NO (WHEN BLANK, USE DWG REVISION)

QTY REQD PER ASSY

PARTS LIST

DIMENSIONS: mm [INCHES] MATL - HT TR - FIN -

DO NOT SCALE PRINT.

TOLERANCES UNLESS OTHERWISE SPECIFIED:

- 1 PLC DEC ±
- 2 PLC DEC ±
- 3 PLC DEC ±

ANGLES ± -

SURF TEXTURE: ✓

REMOVE BURRS, BREAK SHARP EDGES R0.38 MAX

DR 070CT04 APP 070CT04 F.BACKHURST

CHK - REL 05NOV04 L.LOFTHOUSE

AMP Tyco Electronics Harrisburg, PA 17105-3608

NAME SIDE FEED HD-I APPLICATOR MACHINE REF HD-I APPL

SCALE - DWG NO 1426529 SHEET 1 OF 1 REV B

CAGE CODE 00779 CUSTOMER AND ASSEMBLY DRAWING RESTRICTED TO