

Dual or Triple Output 35W Low Profile Power Supplies

Features

- ◆ 2 x 4 x 1.06" footprint
- ◆ Output 1 isolated from outputs 2 & 3
- ◆ No minimum loading
- ◆ Medical & ITE Certifications
- ◆ Three year warranty



Key Market Segments & Applications



Specifications			
Model		CUT35-522	CUT35-5FF
AC Input Voltage (1)	VAC	85 - 265VAC	
Input Frequency	Hz	47 - 63Hz	
DC Input Voltage	VDC	88 - 370VDC (No safety certification)	
Inrush Current (cold start)	A	13A at 100VAC, 32A at 230VAC	
Power Factor	-	Meets EN61000-3-2	
Input Current (100 / 200VAC)	A	1 / 0.5	
Temperature Coefficient (-20 to +70°C)	-	V1: <0.02%/°C, V2 & 3 <0.03%/°C	
Overcurrent Protection	-	> 105%	
Overvoltage Protection (2)	V	V1: 5.7-7.0, V2: 13.8 - 16.8V	V1: 5.7-7.0, V2: 17.2 - 21.0V
Efficiency (Typical at 200VAC Input)	%	81%	82%
Hold Up Time (115 / 230V input)	ms	20ms	
Leakage Current (265VAC 50Hz)	mA	<0.3mA	
Operating Temperature (3)	-	Open Frame & /B:-20 to +70°C. Derate linearly to 70% load from +55 to +70°C Cover:-20 to +60°C. Derate linearly to 70% load from +45 to +60°C	
Storage Temperature	-	-30 to +85°C	
Operating Humidity (non condensing)	-	5 - 95% RH	
Cooling	-	Convection	
Withstand Voltage	-	Input to Ground 2kVAC, Input to Output 3kVAC, Output to Ground 500VAC, V1 to V2 / V3 500VAC for 1 min.	
Isolation Resistance	-	>100M at 25C & 70%RH, Output to Ground 500VDC	
Vibration (non operating)	-	10 - 55Hz: 19.6m/s ² constant sweep 1 min X, Y, Z for 1 hour	
Shock	-	< 196.1 m/s ² (20G)	
Immunity	-	IEC61000-4-2 (lv 3, 4), -3 (lv3), -4 (lv 4), -5 (lv3, 4), -6 (lv 3), -8 (lv 4), -11	
Safety Agency Certifications	-	UL60950-1, CSA60950-1-07 (cTUVus), EN60950-1, CE Mark ANSI/AAMI ES60601-1, CSA 60601-1 (cTUVus), IEC/EN60601-1 (2 x MOOP)	
Conducted & Radiated EMI	-	EN55011-B, FCC-B	
Weight (Typ)	g	Open frame: 90, Baseplate: 136, Cover: 175	
Size (WxLxH)	in (mm)	Open Frame: 2 x 4 x 1.06" (50.8 x 101.6 x 27) Baseplate: 2.22 x 4.8 x 1.1" (56.5 x 122 x 28) Cover: 2.48 x 4.92 x 1.42" (63.1 x 125 x 36)	
Warranty	yrs	Three Years	

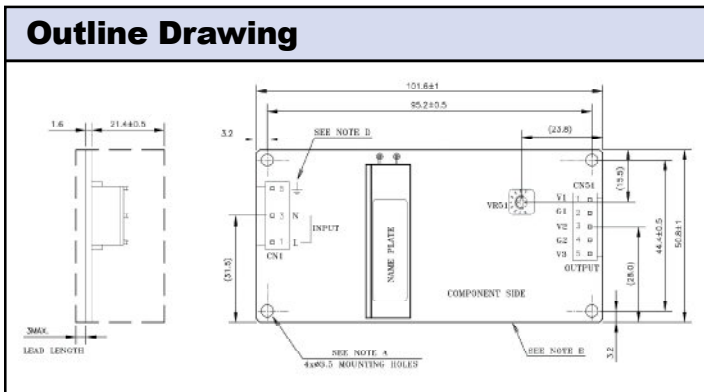
(1) Derate linearly to 60% load from 100VAC to 85VAC input when ambient is <-10°C

(2) Cycle AC to reset

(3) See derating curves in installation manual for all mounting orientatons

Model Selector								
Model		Voltage (V)	Adjust Range (V)	Max Current (A)	Max Power (W)	Load Reg (mV)	Line Reg (mV)	Ripple Noise (mV)
CUT35-522	V 1	5V	5 - 5.25	3	15	100	50	120
	V2	+12V	Fixed	1.2	20.4	600	240	150
	V3	-12V	Fixed	0.85		600	240	150
CUT35-522	V1	5V	5 - 5.25	3	15	100	50	120
	V2	24V	Fixed	0.85	20.4	750	300	150
(Leave common terminal unconnected)								
CUT35-5FF	V1	5V	5 - 5.25	3	15	100	50	120
	V2	+15V	Fixed	1	19.5	750	300	150
	V3	-15V	Fixed	0.65		750	300	150
CUT35-5FF	V1	5V	5 - 5.25	3	15	100	50	120
	V2	30V	Fixed	0.65	19.5	750	300	150
(Leave common terminal unconnected)								

Note CUT35 can be configured as a dual or single output.



Options	
Suffix	Description
Blank	Open frame with JST connectors
/A	Cover with JST connectors
/B	Baseplate with JST connectors

For Additional Information, please visit <https://product.tdk.com/info/en/products/power/index.html>

