

## 1500W Medical and Industrial Power Supplies

### Features

- ◆ Low Audible Noise (<45dBA)
- ◆ EN55011/55032-B EMI
- ◆ Enclosed Construction
- ◆ Compact Size
- ◆ Medical and Industrial Certifications
- ◆ 7 Year Warranty



### Key Market Segments & Applications



### Specifications

Model		CUS1500M
AC Input Voltage range (1)	VAC	85 - 265VAC (47 - 63Hz)
DC Input Voltage range*	VDC	120 - 340VDC*
Inrush Current (100 / 200VAC)	A	60 / 60A
Power Factor (100 / 200VAC)	-	Meets EN61000-3-2 (0.98 / 0.95)
Input Current (115/230VAC) (Typ)	A	16 / 8A
Temperature Coefficient	%/°C	<0.02%/°C
Regulation	-	See Model Selector
Overcurrent Protection	-	>105%, Constant Current Style. After 5s unit will shutdown
Overvoltage Protection	V	125-150% (115-125% for 48V), Cycle AC line to reset
Hold Up Time (Typ at 100% load)	ms	20ms
Leakage Current (max)	mA	<0.3mA
Standby Voltage	A	5V 1A (always on)
Remote Sense	-	Yes
Remote On/Off	-	Yes. Apply external or Standby voltage to enable output voltage
DC Good, Fan Alarm	-	Open collector signal, high on fail
Parallel Operation	-	Yes, up to 5 units
Operating Temperature	°C	-20 to +60°C, derate linearly to 60% load from 50 to 60°C Reverse air (/RF): -20 to +70°C, derate linearly to 50% load from 50 to 70°C
Storage Temperature	°C	-30 to +75°C
Operating Humidity (non condensing)	%RH	20 - 90%RH
Storage Humidity (non condensing)	%RH	10 - 90%RH
Cooling	-	Internal variable speed fan, air intake from front. <45dBA noise
Withstand Voltage	VAC	Input to Ground 2kVAC (1xMoPP), Input to Output 4kVAC (2xMoPP), Output to Ground 1.5kVAC (1xMoPP) for 1 min.
Isolation Resistance	MΩ	>100MΩ at 25°C & 70%RH, Output to Ground 500VDC
Vibration (non operating)	-	10 - 55Hz: 19.6m/s <sup>2</sup> (sweep 1 min) X, Y, Z for 1 hour
Shock	-	< 196.1 m/s <sup>2</sup>
Safety Agency Certifications	-	IEC/ES/EN/CSA60601-1, IEC/UL/EN/CSA60950-1, IEC/UL/EN62368-1, EN62477-1 (OVC III), CE Mark
Line Dips	-	SEMI-F47 (200VAC input)
Conducted & Radiated EMI	-	EN55011 / EN55032-B, FCC Class B, VCCI-B
Immunity	-	IEC61000-4-2, -3, -4, -5, -6, -8, -11, IEC61000-6-2, IEC60601-1-2 Ed.4
Weight (Typ)	g	3,000g
Size (WxHxD)	mm/In	127 x 63 x 261mm / 5 x 2.48 x 10.28"
MTBF - Telcordia SR-332 issue 3 **	Hours	769,670 hours
Warranty	yrs	Seven Years

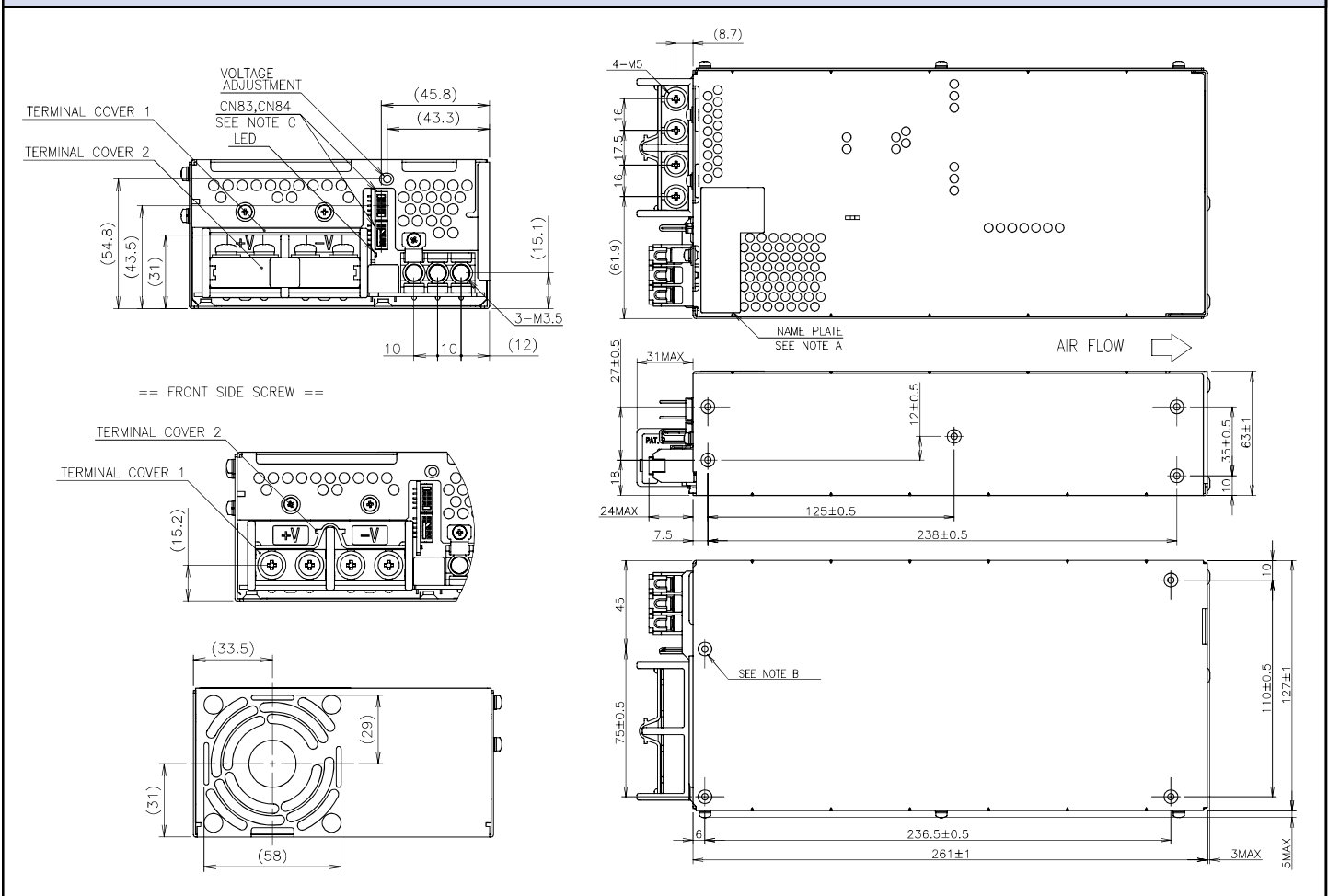
\*Safety certified for AC input only \*\*24V output model, 25°C ambient, full load, 230VAC input

(1) Derate linearly to 80% load from 90 to 85VAC input

## Output Ratings

Model	Voltage (V)	Adjust Range (V)	Max Current (A)	Max Output Power (W)	Load Reg (mV)	Line Reg (mV)	Ripple Noise (mV)	Efficiency (typ) % 115/230VAC
CUS1500M-12	12	10.2 - 14.4	125	1500	96	48	150	82 / 85
CUS1500M-15	15	12.8 - 18	100	1500	120	60	150	82 / 85
CUS1500M-24	24	20.4 - 28.8	63	1512	144	96	180	85 / 88
CUS1500M-36	36	30.6 - 43.2	42	1512	216	144	250	85 / 88
CUS1500M-48	48	40.8 - 52.8	32	1536	288	192	300	85 / 88

## Outline Drawing



## Options

Suffix	Description
/CO	Pcb coating
/SF	Single fuse (Line input)
/RF	Reverse Fan (Air exits over input/output terminals)

For Additional Information, please visit  
[us.tdk-lambda.com/lp/products/cus-m-series](http://us.tdk-lambda.com/lp/products/cus-m-series)

