

W005 - W10

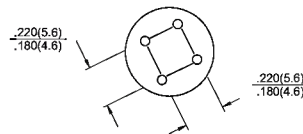
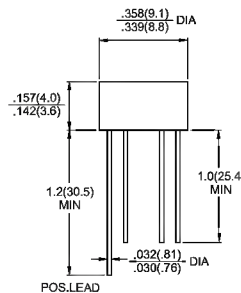
Single Phase 1.5 AMPS. Silicon Bridge Rectifiers

RB-15



Features

- ✦ UL Recognized File # E-96005
- ✦ Surge overload ratings to 40 amperes peak
- ✦ Ideal for printed circuit board
- ✦ Reliable low cost construction technique results in inexpensive product
- ✦ High temperature soldering guaranteed:
260 °C / 10 seconds / 0.375" (9.5mm)
lead length at 5 lbs., (2.3 kg) tension



Mechanical Data

- ✦ Case: Molded plastic
- ✦ Lead: solder plated
- ✦ Polarity: As marked
- ✦ Weight: 1.07 grams

Dimensions in inches and (millimeters)

Maximum Ratings and Electrical Characteristics

Rating at 25°C ambient temperature unless otherwise specified.
 Single phase, half wave, 60 Hz, resistive or inductive load.
 For capacitive load, derate current by 20%

Type Number	Symbol	W005	W01	W02	W04	W06	W08	W10	Units
Maximum Recurrent Peak Reverse Voltage	VRRM	50	100	200	400	600	800	1000	V
Maximum RMS Voltage	VRMS	35	70	140	280	420	560	700	V
Maximum DC Blocking Voltage	VDC	50	100	200	400	600	800	1000	V
Maximum Average Forward Rectified Current @ _{T_A} = 50 °C	I(AV)	1.5							A
Peak Forward Surge Current, 8.3 ms Single Half Sine-wave Superimposed on Rated Load (JEDEC method)	IFSM	40							A
Maximum Instantaneous Forward Voltage @ 1.5A	VF	1.0							V
Maximum DC Reverse Current @ _{T_A} =25 °C at Rated DC Blocking Voltage @ _{T_A} =125 °C	IR	10 500							uA uA
Typical Thermal Resistance (Note)	RθJA RθJL	36 13							°C/W
Operating Temperature Range	T _J	-55 to +125							°C
Storage Temperature Range	T _{STG}	-55 to +150							°C

Note: Thermal Resistance from Junction to Ambient and from Junction to Lead Mounted on P.C.B.
 With 0.4" x 0.4" (10mm x 10mm) Copper Pads.

RATINGS AND CHARACTERISTIC CURVES (W005 THRU W10)

FIG.1- MAXIMUM FORWARD CURRENT DERATING CURVE

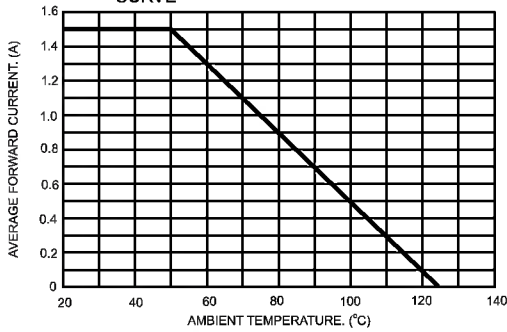


FIG.2- TYPICAL REVERSE CHARACTERISTICS PER BRIDGE ELEMENT

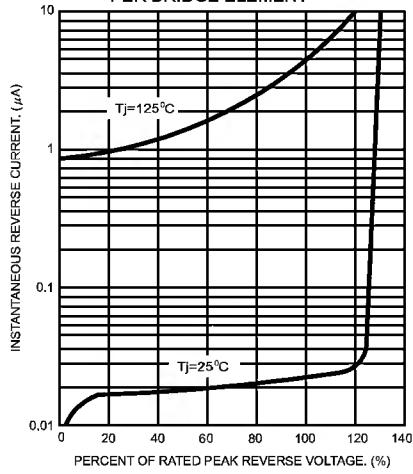


FIG.3- MAXIMUM NON-REPETITIVE FORWARD SURGE CURRENT PER BRIDGE ELEMENT

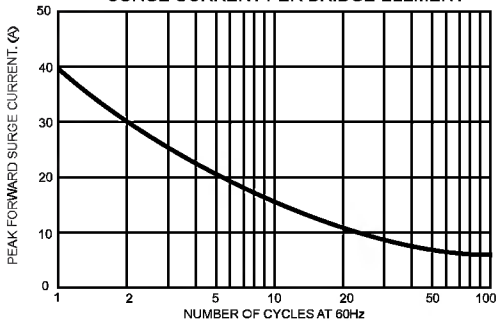


FIG.4- TYPICAL JUNCTION CAPACITANCE

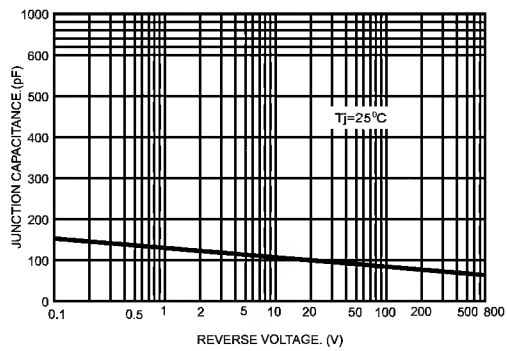


FIG.5- TYPICAL INSTANTANEOUS FORWARD CHARACTERISTICS PER BRIDGE ELEMENT

