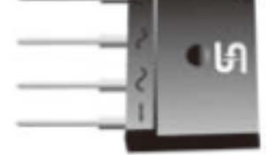


- Ideal for printed circuit boards
- Typical IR less than 0.1uA
- High surge current capability
- Compliant to RoHS Directive 2011/65/EU and in accordance to WEEE 2002/96/EC
- Halogen-free according to IEC 61249-2-21 definition



TS4K

MECHANICAL DATA

Case : TS4K

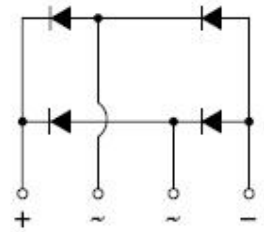
Molding compound, UL flammability classification rating 94V-0
 Base P/N with suffix "G" on packing code - halogen-free, RoHS compliant

Terminal : Matte tin plated leads, solderable per JESD22-B102
 Meet JESD 201 class 1A whisker test

Polarity : Polarity as marked on the body

Mounting torque : 8.17 in-lbs maximum

Weight : 4 gram (approximately)



MAXIMUM RATINGS AND ELECTRICAL CHARACTERISTICS (T_A=25°C unless otherwise noted)

PARAMETER	SYMBOL	TS4K40	TS4K60	TS4K100
Maximum repetitive peak reverse voltage	V _{RRM}	400	600	
Maximum RMS voltage	V _{RMS}	280	420	
Maximum DC blocking voltage	V _{DC}	400	600	
Maximum average forward rectified current	I _{F(AV)}		4	
Peak forward surge current, 8.3 ms single half sine-wave superimposed on rated load	I _{FSM}		120	
Rating for fusing (t<8.3mS)	I ² T		60	
Maximum instantaneous forward voltage (Note 1)	I _F = 2 A I _F = 4 A		1.0 1.1	
Maximum DC reverse current at rated DC blocking voltage	T _J =25 °C T _J =125°C		10 500	
Typical thermal resistance	R _{θJC}		5.5	
Operating junction temperature range	T _J		- 55 to + 150	
Storage temperature range	T _{STG}		- 55 to + 150	

Note 1 : Pulse test with PW=300u sec, 1% duty cycle

EXAMPLE				
PREFERRED P/N	PART NO.	PACKING CODE	GREEN COMPOUND CODE	DESCRIPTION
TS4K80 D3	TS4K80	D3		
TS4K80 D3G	TS4K80	D3	G	Green compound

RATINGS AND CHARACTERISTICS CURVES

(TA=25°C unless otherwise noted)

FIG. 1- MAXIMUM FORWARD CURRENT DERATING CURVE

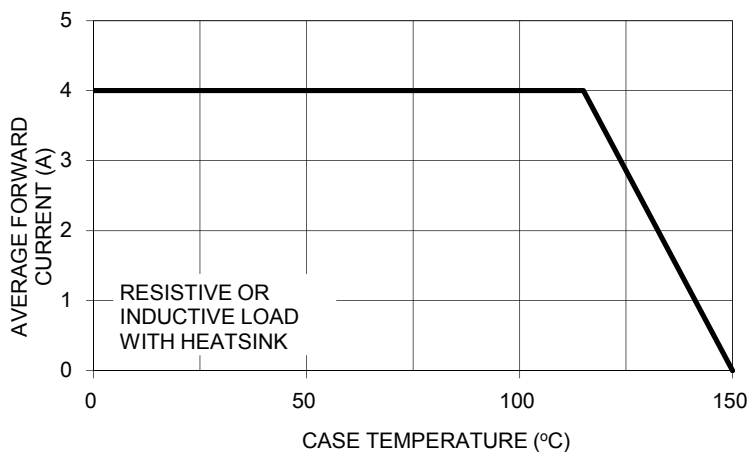


FIG. 2- TYPICAL REVERSE CHARACTERISTICS

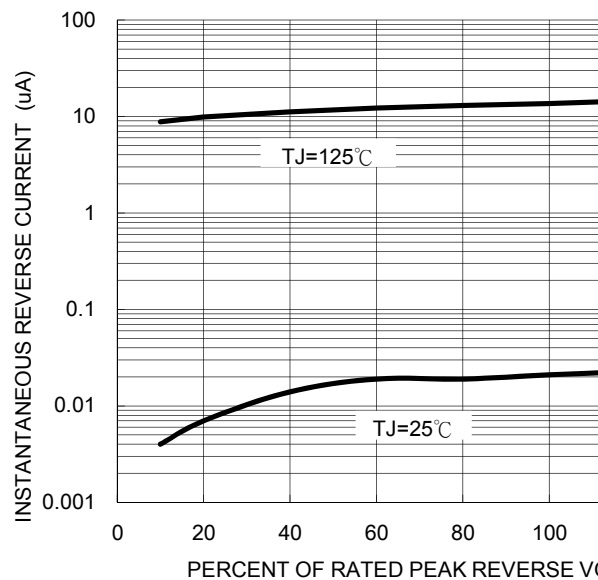


FIG. 3- MAXIMUM NON-REPETITIVE FORWARD SURGE CURRENT

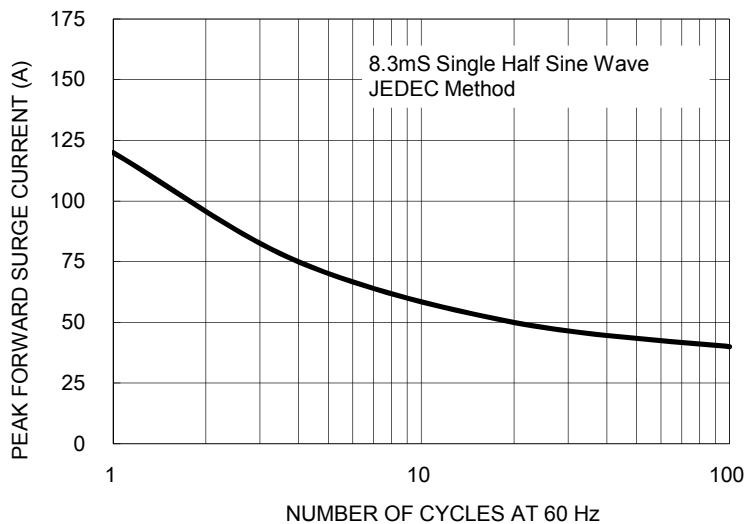
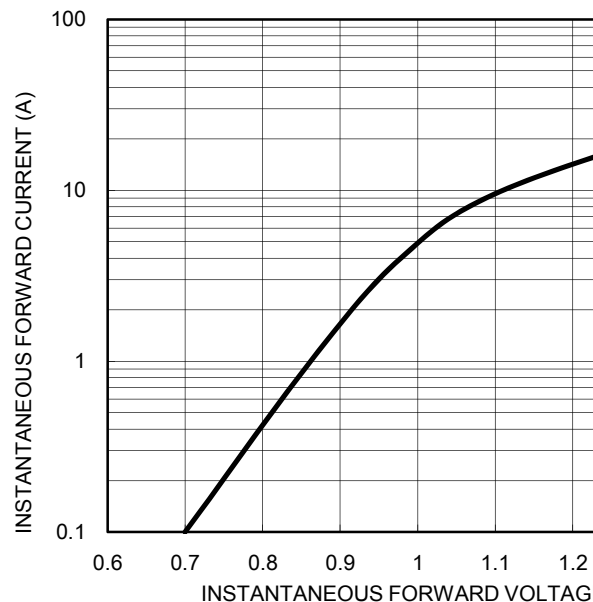
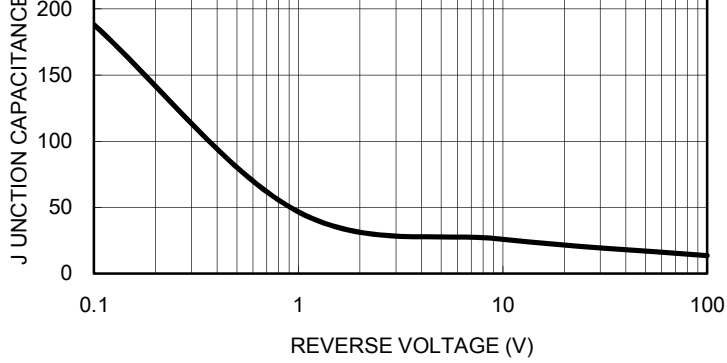
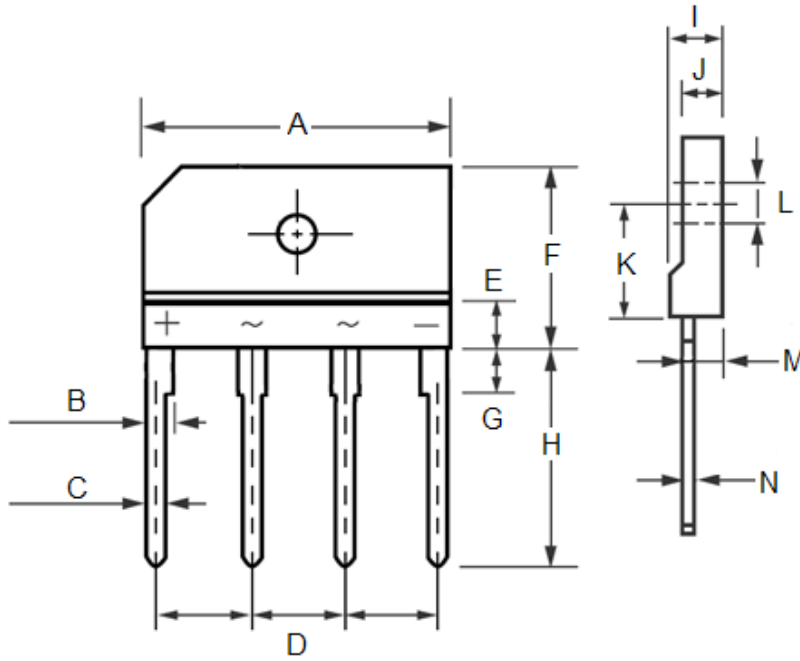


FIG. 4- TYPICAL FORWARD CHARACTERISTICS





PACKAGE OUTLINE DIMENSIONS



DIM.	Unit(mm)		Uni Min
	Min	Max	
A	24.70	25.30	0.972
B	2.00	2.30	0.079
C	0.90	1.10	0.035
D	7.30	7.70	0.287
E	3.00	5.00	0.118
F	14.70	15.30	0.579
G	3.30	3.70	0.130
H	17.00	18.00	0.669
I	4.40	4.80	0.173
J	3.40	3.80	0.134
K	9.30	9.60	0.366
L	3.10	3.60	0.122
M	3.10	3.40	0.122
N	0.50	0.70	0.020

MARKING DIAGRAM



- P/N = Specific Device Code
- G = Green Compound
- YWW = Date Code
- F = Factory Code