

- High surge current capability
- Low power loss
- Compliant to RoHS Directive 2011/65/EU and in accordance to WEEE 2002/96/EC
- Halogen-free according to IEC 61249-2-21 definition



MECHANICAL DATA

Case: A-405

A-405

Molding compound, UL flammability classification rating 94V-0

Base P/N with suffix "G" on packing code - halogen-free

Terminal: Matte tin plated leads, solderable per JESD22-B102

Meet JESD 201 class 1A whisker test

Weight: 0.2g (approximately)

MAXIMUM RATINGS AND ELECTRICAL CHARACTERISTICS (T_A=25°C unless otherwise noted)

PARAMETER	SYMBOL	SF 11S	SF 12S	SF 13S	SF 14S	SF 15S	SF 16S
Maximum repetitive peak reverse voltage	V _{RRM}	50	100	150	200	300	400
Maximum RMS voltage	V _{RMS}	35	70	105	140	210	280
Maximum DC blocking voltage	V _{DC}	50	100	150	200	300	400
Maximum average forward rectified current	I _{F(AV)}	1					
Peak forward surge current, 8.3 ms single half sine-wave superimposed on rated load	I _{FSM}	30					
Maximum instantaneous forward voltage (Note 1) @ 1 A	V _F	0.95				1.3	
Maximum reverse current @ rated VR	I _R	T _J =25 °C				5	
		T _J =100 °C				100	
Maximum reverse recovery time (Note 2)	T _{rr}	35					
Typical junction capacitance (Note 3)	C _j	30				15	
Typical thermal resistance	R _{θJA}	100					
Operating junction temperature range	T _J	- 55 to +125					
Storage temperature range	T _{STG}	- 55 to +150					

Note 1: Pulse test with PW=300µs, 1% duty cycle

Note 2: Reverse Recovery Test Conditions: I_F=0.5A, I_R=1.0A, I_{RR}=0.25A

Note 3: Measured at 1 MHz and Applied Reverse Voltage of 4.0V D.C.

(Note 1)	A0	Sulfix G	A-405	3K / AMMO box
	R0		A-405	5K / 13" Reel
	B0		A-405	1K / Bulk packing

Note 1: "x" defines voltage from 50V (SF11S) to 600V (SF18S)

EXAMPLE

PREFERRED P/N	PART NO.	PACKING CODE	GREEN COMPOUND CODE	DESCRIPTION
SF16S A0	SF16S	A0		
SF16S A0G	SF16S	A0	G	Green compo

RATINGS AND CHARACTERISTICS CURVES

(TA=25°C unless otherwise noted)

FIG.1- MAXIMUM AVERAGE FORWARD CURRENT DERATING

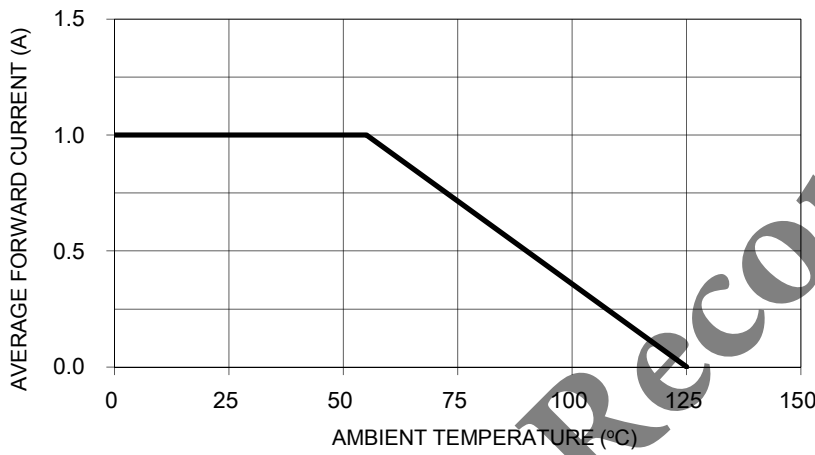


FIG.2- TYPICAL REVERSE CHARACTERISTICS

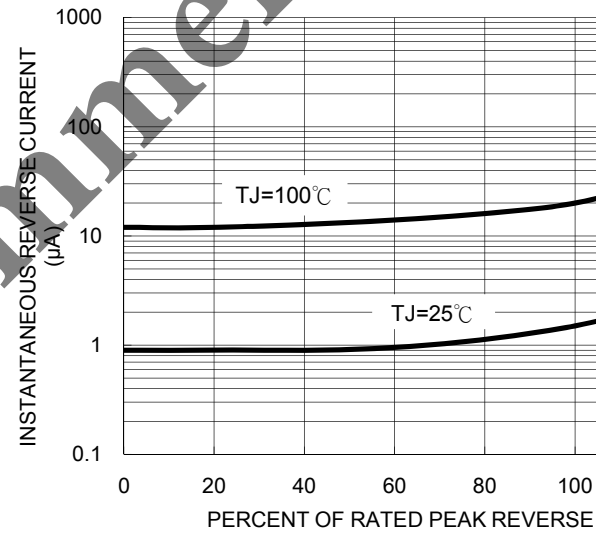


FIG. 3- MAXIMUM NON-REPETITIVE FORWARD SURGE CURRENT

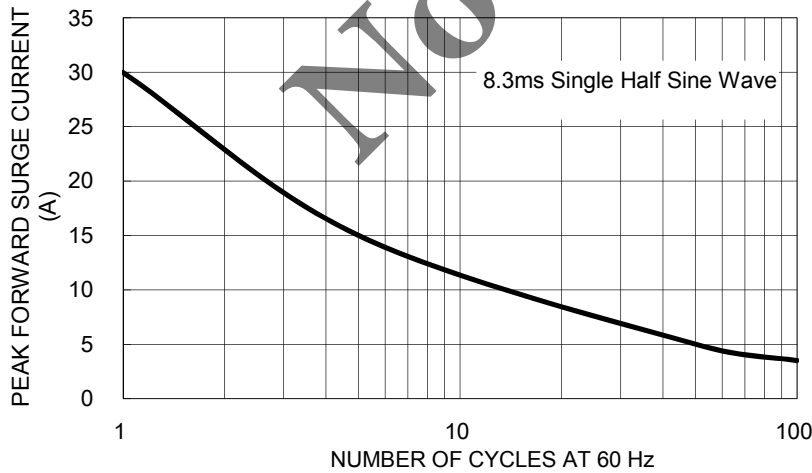
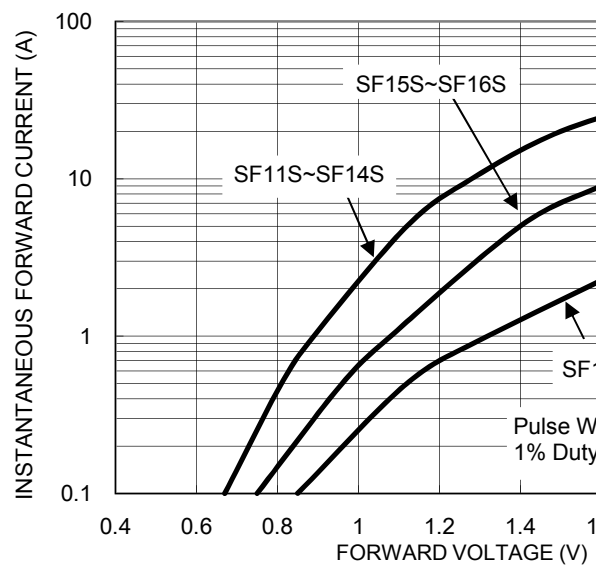
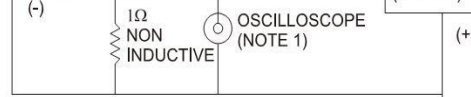
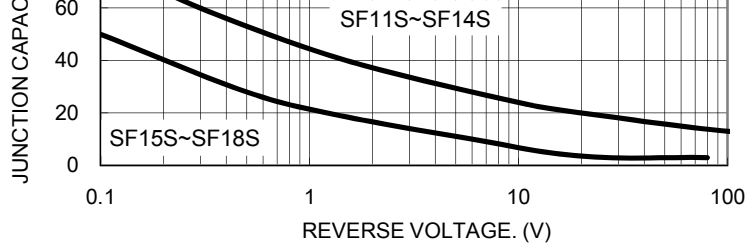


FIG. 4- TYPICAL FORWARD CHARACTERISTICS

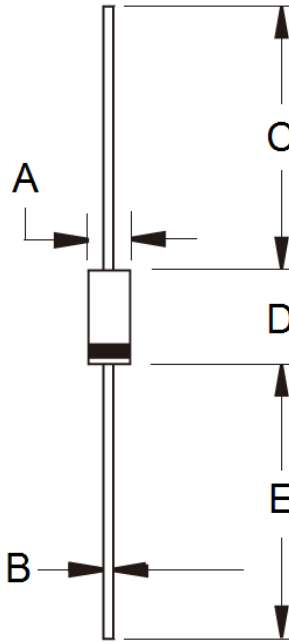




NOTES: 1. Rise Time=7ns max. Input Impedance= 1 megohm 22pf
 2. Rise Time=10ns max. Source Impedance= 50 ohms

-1.0A

PACKAGE OUTLINE DIMENSIONS



DIM.	Unit (mm)		Unit (inch)	
	Min	Max	Min	Max
A	2.00	2.70	0.079	0.106
B	0.53	0.64	0.021	0.025
C	25.40	-	1.000	-
D	4.20	5.20	0.165	0.205
E	25.40	-	1.000	-

MARKING DIAGRAM



P/N = Specific Device Code
 G = Green Compound
 YWW = Date Code
 F = Factory Code

Not Recommended

Notice

Specifications of the products displayed herein are subject to change without notice. TSC or anyone on its behalf assumes no responsibility or liability for any errors or inaccuracies.

Information contained herein is intended to provide a product description only. No license, express or implied, of any intellectual property rights is granted by this document. Except as provided in TSC's terms and conditions of sale for such products, TSC assumes no liability whatsoever, and disclaims any express or implied warranty relating to sale and/or use of TSC products including liability or warranties relating to fitness for a particular purpose, merchantability, or infringement of any patent, copyright, or other intellectual property right.

The products shown herein are not designed for use in medical, life-saving, or life-sustaining applications. Customers using or selling these products for use in such applications do so at their own risk and agree to indemnify TSC for any damages resulting from such improper use or sale.

Document Number: DS_D1401001

Ve