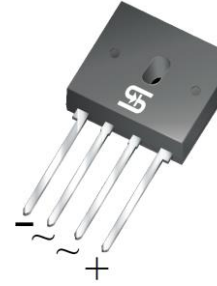


4A, 400V - 1000V Glass Passivated Single-Phase Bridge Rectifiers

FEATURES

- Ideal for printed circuit board
- High case dielectric strength of 1500 VRMS
- High surge current capability
- Compliant to RoHS Directive 2011/65/EU and in accordance to WEEE 2002/96/EC
- Halogen-free according to IEC 61249-2-21



GBU

MECHANICAL DATA

Case: GBU

Molding compound: UL flammability classification rating 94V-0

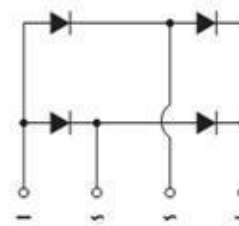
Terminals: Matte tin plated leads, solderable per J-STD-002

Packing code with suffix "G" means green compound (halogen-free)

Polarity: As marked

Mounting torque: 0.56 Nm (5 in-lbs.) max.

Weight: 4 g (approximately)



MAXIMUM RATINGS AND ELECTRICAL CHARACTERISTICS (T_A=25°C unless otherwise noted)

PARAMETER	SYMBOL	GBU404-K	GBU405-K	GBU406-K	GBU407-K	UNIT
Marking code		GBU404	GBU405	GBU406	GBU407	
Maximum repetitive peak reverse voltage	V _{RRM}	400	600	800	1000	V
Maximum RMS voltage	V _{RMS}	280	420	560	700	V
Maximum DC blocking voltage	V _{DC}	400	600	800	1000	V
Maximum average forward rectified current	I _{F(AV)}	4				A
Peak forward surge current, 8.3 ms single half sine-wave	I _{FSM}	150				A
Rating of fusing (t<8.3ms)	I ² t	93				A ² s
Maximum Instantaneous Forward Voltage (Note 1) I _F = 2 A I _F = 4 A	V _F	1.0 1.1				V
Maximum reverse current @ rated V _R	T _J =25°C	5				μA
	T _J =125°C	500				
Typical junction capacitance per leg (Note 2)	C _J	100	45			pF
Typical thermal resistance	R _{θJC}	4				°C/W
	R _{θJA}	20				
Operating junction temperature range	T _J	- 55 to +150				°C
Storage temperature range	T _{STG}	- 55 to +150				°C

Note 1: Pulse test with PW=300μs, 1% duty cycle

Note 2: Measured at 1MHz and applied reverse bias of 4.0V DC

ORDERING INFORMATION

PART NO.	PACKING CODE	PACKING CODE SUFFIX (*)	PACKAGE	PACKING
GBU40X-K (Note 1)	D2	G	GBU	20 / Tube

Note 1: "x" defines voltage from 400V (GBU404-K) to 1000V (GBU407-K)

Note 2: " * " defines optional available

EXAMPLE

EXAMPLE PART NO.	PART NO.	PACKING CODE	PACKING CODE SUFFIX	DESCRIPTION
GBU406-K D2	GBU406-K	D2		Non-Green compound
GBU406-K D2G			G	Green compound

RATINGS AND CHARACTERISTICS CURVES

(T_A=25°C unless otherwise noted)

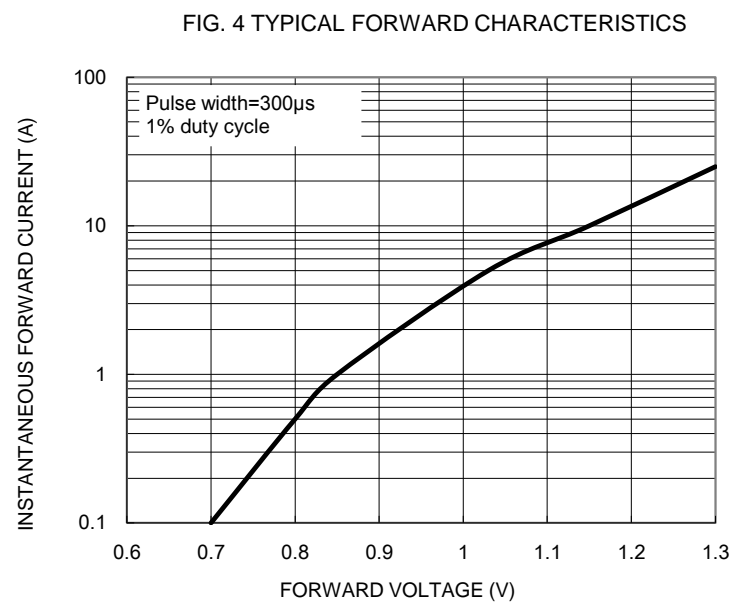
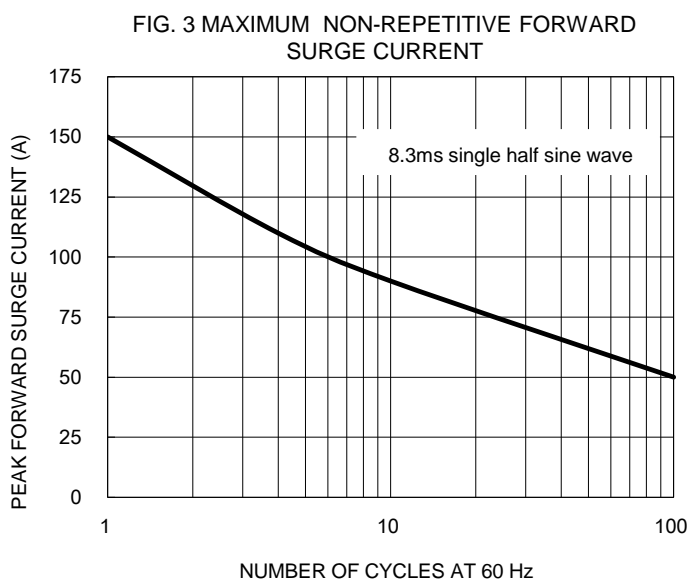
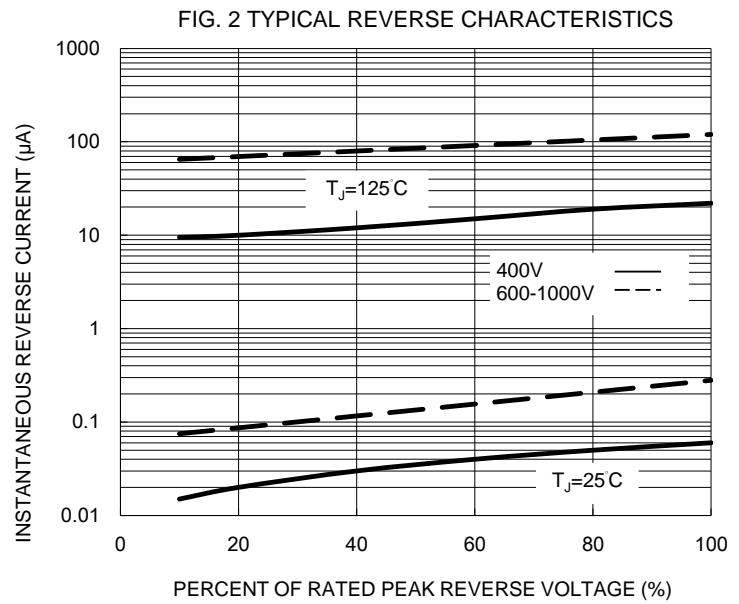
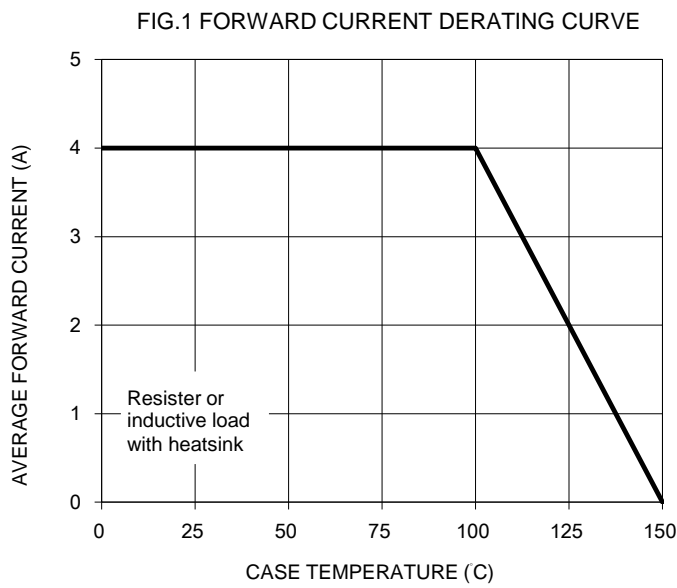
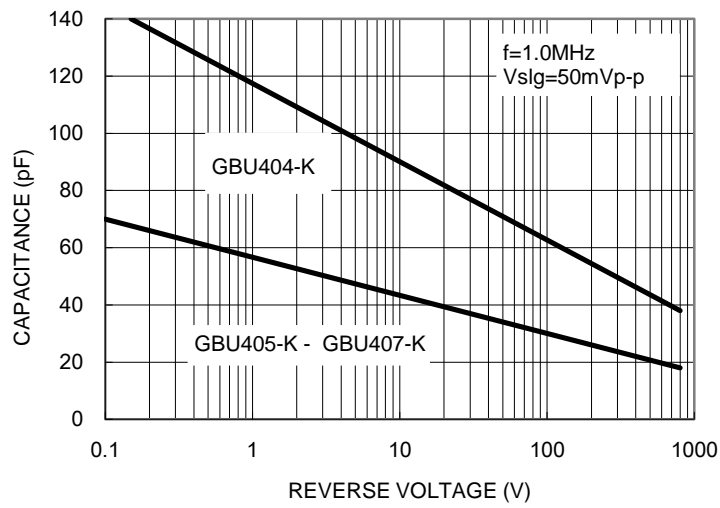
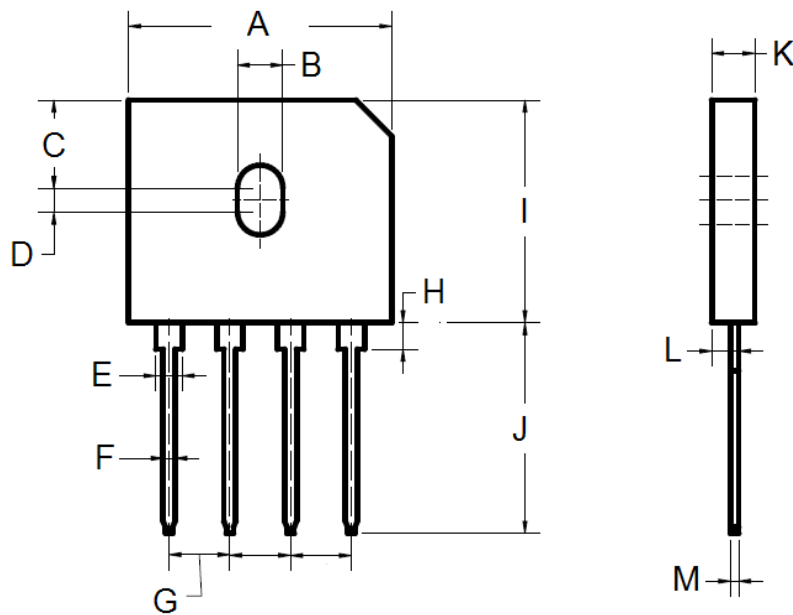


FIG. 5 TYPICAL JUNCTION CAPACITANCE



PACKAGE OUTLINE DIMENSIONS

GBU



DIM.	Unit (mm)		Unit (inch)	
	Min	Max	Min	Max
A	21.80	22.30	0.858	0.878
B	3.50	4.10	0.138	0.161
C	7.40	7.90	0.291	0.311
D	1.65	2.16	0.065	0.085
E	2.06	2.54	0.081	0.100
F	1.02	1.27	0.040	0.050
G	4.83	5.33	0.190	0.210
H	1.91	2.54	0.075	0.100
I	18.30	18.80	0.720	0.740
J	17.50	18.00	0.689	0.709
K	3.30	3.56	0.130	0.140
L	2.40	2.66	0.094	0.105
M	0.46	0.56	0.018	0.022

MARKING DIAGRAM



- P/N = Marking code
- YW = Date Code
- F = Factory Code
- G = Green Compound

Notice

Specifications of the products displayed herein are subject to change without notice. TSC or anyone on its behalf, assumes no responsibility or liability for any errors or inaccuracies.

Information contained herein is intended to provide a product description only. No license, express or implied, to any intellectual property rights is granted by this document. Except as provided in TSC's terms and conditions of sale for such products, TSC assumes no liability whatsoever, and disclaims any express or implied warranty, relating to sale and/or use of TSC products including liability or warranties relating to fitness for a particular purpose, merchantability, or infringement of any patent, copyright, or other intellectual property right.

The products shown herein are not designed for use in medical, life-saving, or life-sustaining applications. Customers using or selling these products for use in such applications do so at their own risk and agree to fully indemnify TSC for any damages resulting from such improper use or sale.

Version: C1606