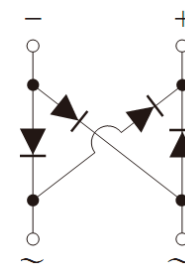
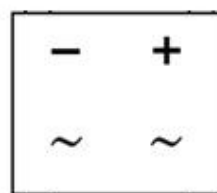


- High surge current capability
- Moisture sensitivity level: level 1, per J-STD-020
- UL Recognized File # E-326854
- Compliant to RoHS Directive 2011/65/EU and in accordance to WEEE 2002/96/EC
- Halogen-free according to IEC 61249-2-21 definition
- AEC-Q101 qualified



ABS



MECHANICAL DATA

Case: Molded plastic body

Molding compound, UL flammability classification rating 94V-0

Packing code with suffix "G" means green compound (halogen-free)

Terminal: Matte tin plated leads, solderable per JESD22-B102

Meet JESD 201 class 2 whisker test

Polarity: Polarity as marked on the body

Weight: 0.12 g (approximately)

MAXIMUM RATINGS AND ELECTRICAL CHARACTERISTICS ($T_A=25^{\circ}\text{C}$ unless otherwise noted)

PARAMETER	SYMBOL	ABS2	ABS4	ABS6	ABS8
Maximum repetitive peak reverse voltage	V_{RRM}	200	400	600	800
Maximum RMS voltage	V_{RMS}	140	280	420	560
Maximum DC blocking voltage	V_{DC}	200	400	600	800
Maximum average forward rectified current On glass-epoxy On aluminum substrate	$I_{F(AV)}$			0.8 1.0	
Peak forward surge current, 8.3 ms single half sine-wave superimposed on rated load	I_{FSM}			30	
Rating for fusing ($t < 8.3\text{ms}$)	i^2t			3.74	
Maximum instantaneous forward voltage (Note 1) $I_F = 0.4\text{ A}$	V_F			0.95	
Maximum DC reverse current at rated DC blocking voltage	I_R			10 150	
Typical thermal resistance	$R_{\theta JL}$			25	
	$R_{\theta JA}$			80	
Operating junction temperature range	T_J			- 55 to +150	
Storage temperature range	T_{STG}			- 55 to +150	

Note 1: Pulse test with $PW=300\mu\text{s}$, 1% duty cycle

Document Number: DS_D1410049

EXAMPLE				
PREFERRED P/N	PART NO.	PACKING CODE	PACKING CODE SUFFIX	DESCR
ABS8 REG	ABS8	RE	G	AEC-Q101 Green cc

RATINGS AND CHARACTERISTICS CURVES

(TA=25°C unless otherwise noted)

FIG. 1 MAXIMUM FORWARD CURRENT DERATING CURVE

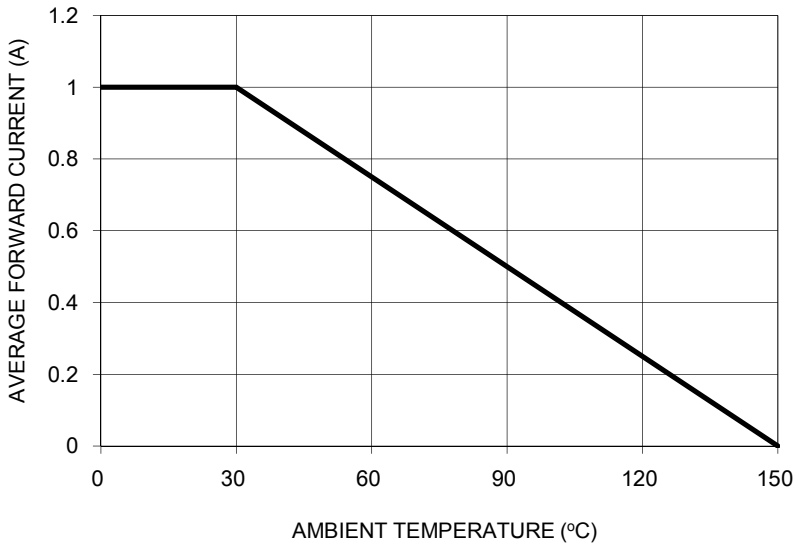


FIG. 2 TYPICAL REVERSE CHARACTERISTICS

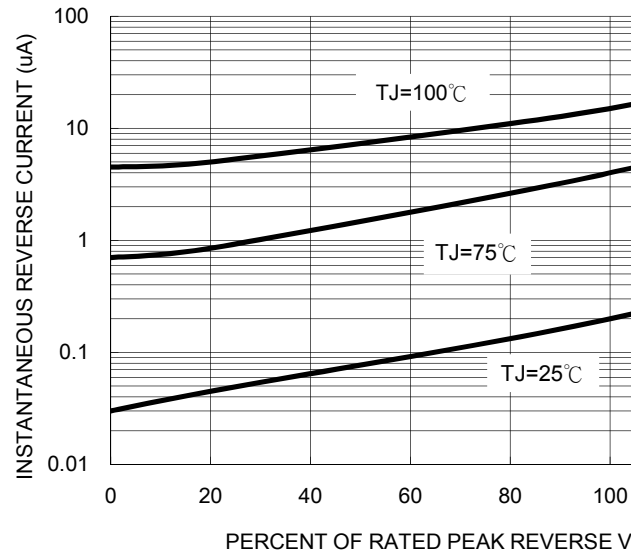


FIG. 3 MAXIMUM NON-REPETITIVE FORWARD SURGE CURRENT

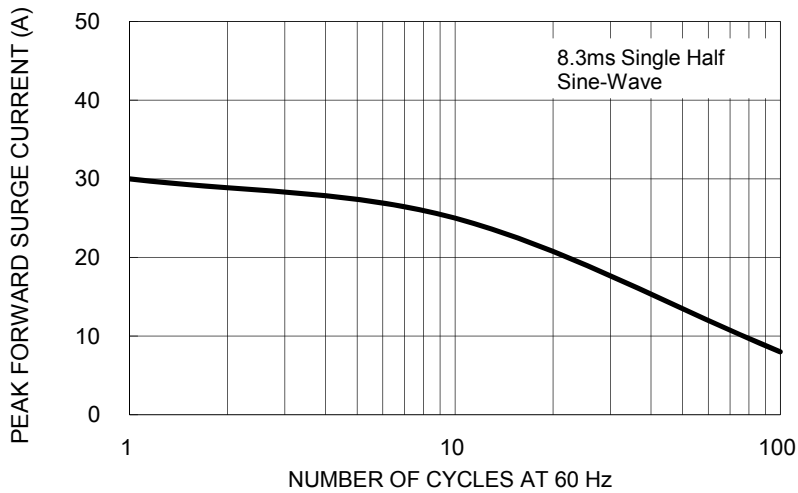
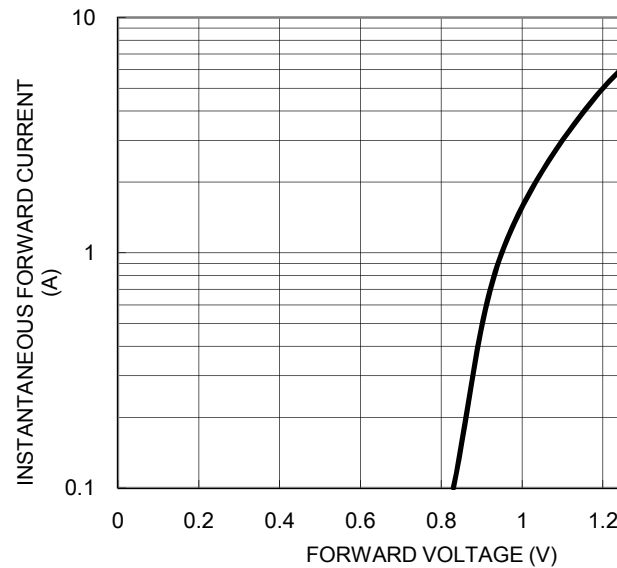
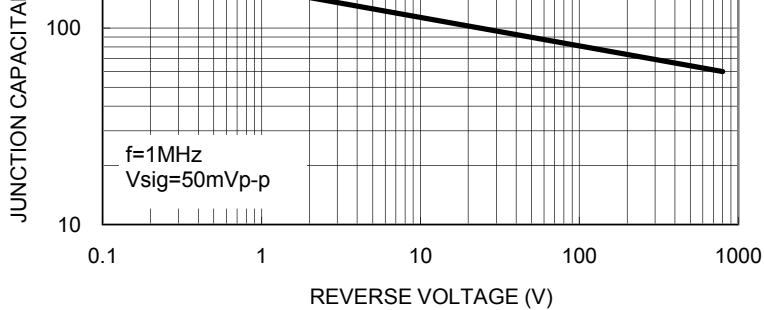
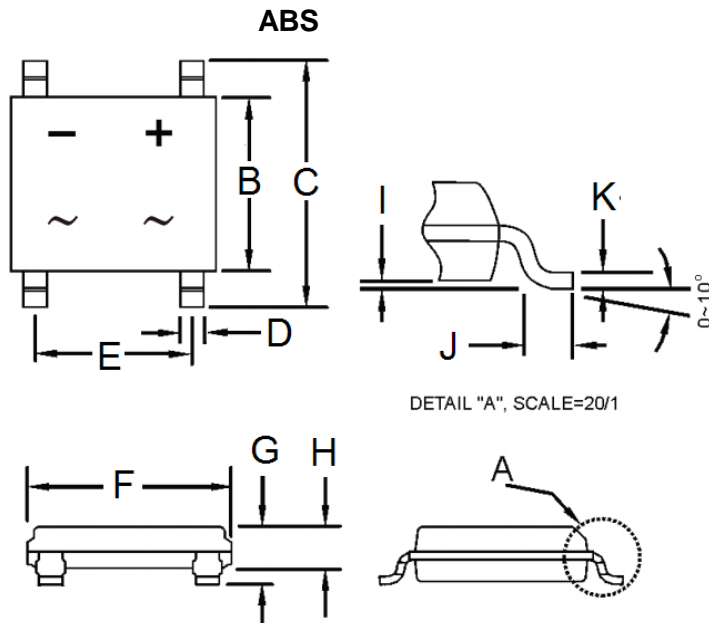


FIG. 4 TYPICAL FORWARD CHARACTERISTICS



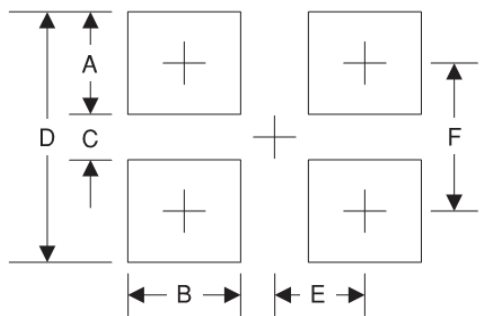


PACKAGE OUTLINE DIMENSIONS



DIM.	Unit (mm)		Unit (in)
	Min	Max	Min
B	4.30	4.50	0.169
C	6.25	6.65	0.246
D	0.60	0.70	0.024
E	3.90	4.10	0.154
F	4.90	5.10	0.193
G	1.40	1.60	0.055
H	1.35	1.45	0.053
I	0.05	0.15	0.002
J	0.30	0.70	0.012
K	0.15	0.25	0.006

SUGGESTED PAD LAYOUT



Symbol	Unit (mm)	Unit (inch)
A	1.5	0.059
B	0.9	0.035
C	4.22	0.166
D	7.22	0.284
E	2.05	0.081
F	5.72	0.225

MARKING DIAGRAM



- P/N = Specific Device Code
- YW = Date Code
- F = Factory Code

Notice

Specifications of the products displayed herein are subject to change without notice. TSC or anyone on its behalf assumes no responsibility or liability for any errors or inaccuracies.

Information contained herein is intended to provide a product description only. No license, express or implied, of any intellectual property rights is granted by this document. Except as provided in TSC's terms and conditions of sale for such products, TSC assumes no liability whatsoever, and disclaims any express or implied warranty relating to sale and/or use of TSC products including liability or warranties relating to fitness for a particular purpose, merchantability, or infringement of any patent, copyright, or other intellectual property right.

The products shown herein are not designed for use in medical, life-saving, or life-sustaining applications. Customers using or selling these products for use in such applications do so at their own risk and agree to indemnify TSC for any damages resulting from such improper use or sale.

Document Number: DS_D1410049