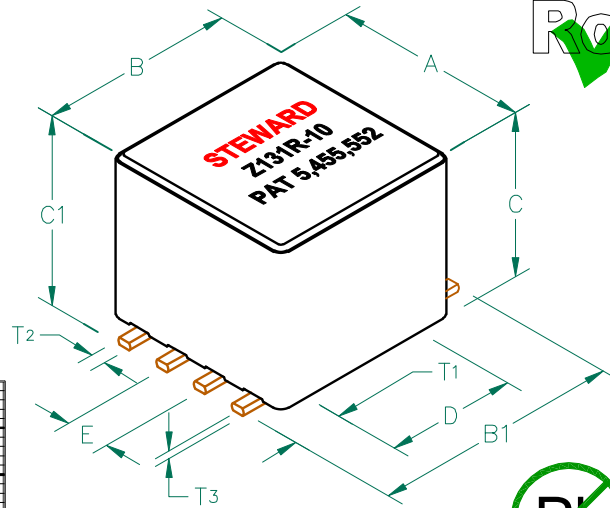


# CM4545Z131R-10

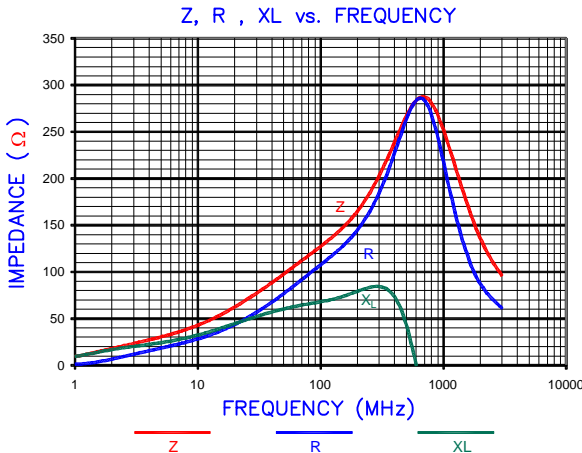
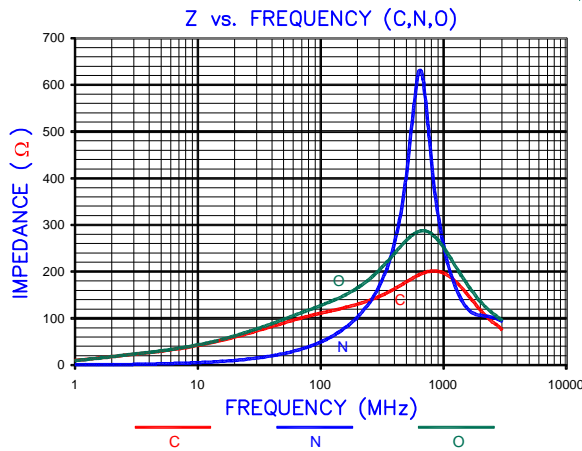
## PHYSICAL DIMENSIONS:

A	11.38	[.448]	± 0.18	[.007]
B	11.38	[.448]	± 0.18	[.007]
B1	14.10	[.555]		MAX
C	9.32	[.367]	± 0.18	[.007]
C1	10.16	[.400]		MAX
D	7.62	[.300]	± 0.10	[.004]
E	2.54	[.100]	± 0.13	[.005]

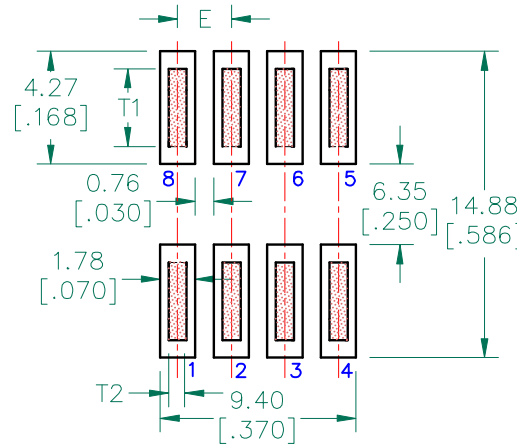
T <sub>1</sub>	2.90	[.114]	± 0.25	[.010]
T <sub>2</sub>	0.84	[.033]		TYP.
T <sub>3</sub>	0.46	[.018]		TYP.



RoHS Compliant



## LAND PATTERN FOR REFLOW SOLDERING



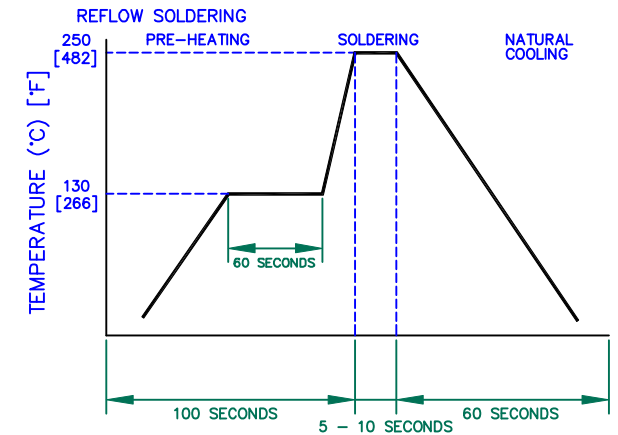
## ELECTRICAL CHARACTERISTICS:

Z @ 100MHz ( Ω )	DCR ( Ω )	Rated Current
Nominal	130	
Minimum	98	
Maximum	163	0.01
		10,000 mA

NOTES: UNLESS OTHERWISE SPECIFIED

1. TAPED AND REELED per CURRENT EIA SPECIFICATIONS 13" REELS, 400 PCS/REEL.
2. COMPONENTS SHOULD BE ADEQUATELY PREHEATED BEFORE SOLDERING.
3. REF. CARRIER TAPE SPECIFICATION CART449-63.
4. TERMINATION FINISH IS 100% TIN.
5. THIS PART HAS NO PIN POLARITY.

## RECOMMENDED SOLDERING CONDITIONS



UNCONTROLLED DOCUMENT

DIMENSIONS ARE IN mm [INCHES].

THIS DOCUMENT CONTAINS INFORMATION WHICH IS PROPRIETARY AND CONFIDENTIAL TO STEWARD. NO PRODUCTION OR PUBLICATION OF THIS DOCUMENT IN WHOLE OR IN PART SHALL BE MADE WITHOUT WRITTEN AUTHORIZATION FROM STEWARD.

**Steward**

PROJECT/PART NUMBER: CM4545Z131R-10	REV A	DRAWN BY: JRK
DATE: 06/02/04	SCALE: NTS	SHEET: 2 of 3
CAD # CM4545Z131R-10-2-A	TOOL # H0449-600	