

Zio Current and Voltage Sensor - INA219 (Qwiic)

SEN-15176

The Zio Current and Voltage Sensor is a highly accurate current and power monitor. Utilizing the INA219, it's able to read DC current and power over I²C with up to 1% precision. This is a great fit for a variety of applications, including estimating battery life, tracking solar power generation, or monitoring electricity consumption.

This sensor can measure voltage up to 26VDC and current up to 3.2A. The I²C interface makes it easy to daisy chain multiple devices and receive data via the Qwiic connect system.

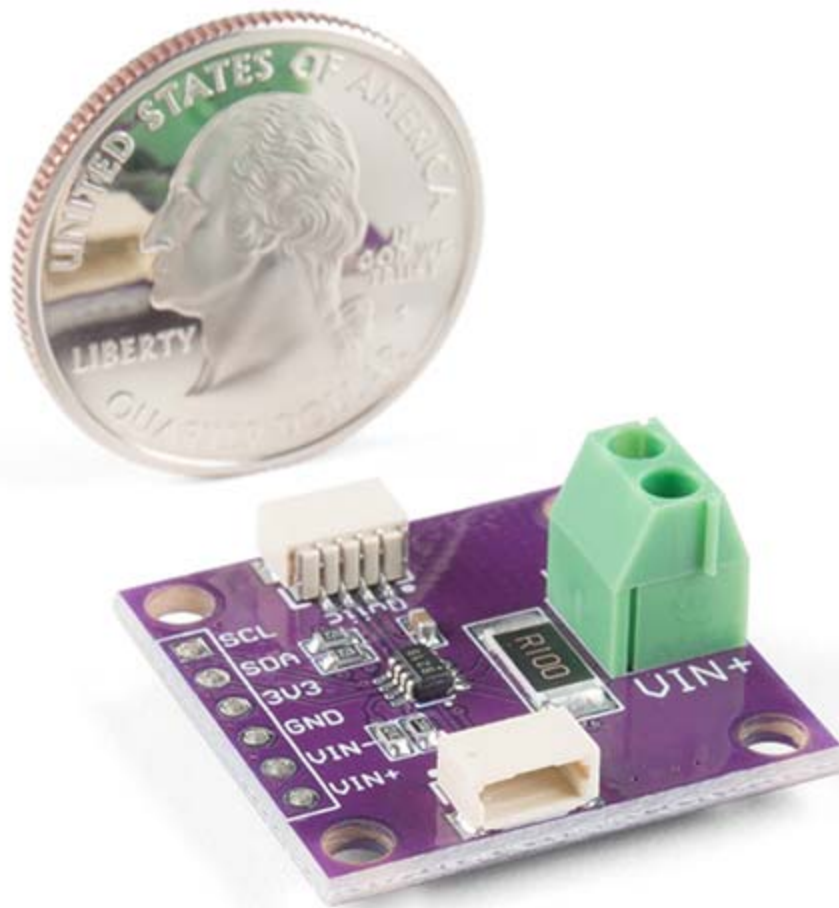
The SparkFun Qwiic Connect System is an ecosystem of I²C sensors, actuators, shields and cables that make prototyping faster and less prone to error. All Qwiic-enabled boards use a common 1mm pitch, 4-pin JST connector. This reduces the amount of required PCB space, and polarized connections mean you can't hook it up wrong.

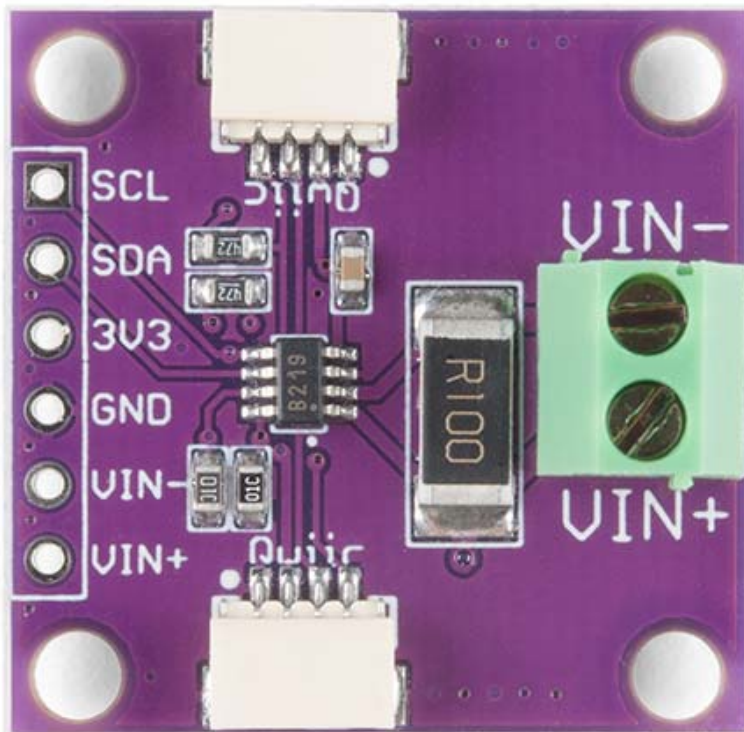
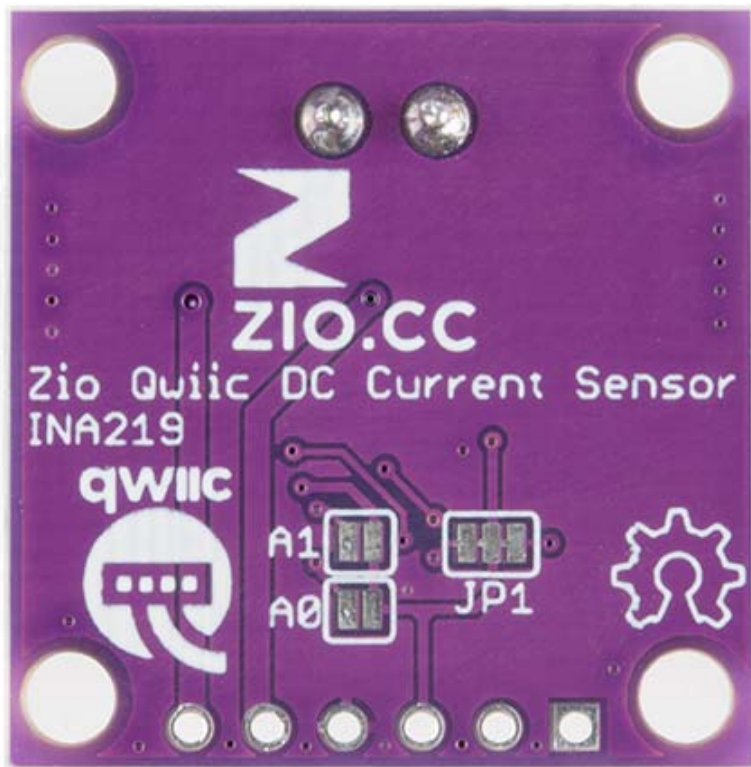
INCLUDES

- 1x Current and Voltage Sensor - INA219
- 1x Male Header - 6-pin

FEATURES

- Operating voltage: 3.3V
- Bus voltage: 0-26V
- Max. current: 3.2A
- Interface: I²C (address 1000000 (default))
- I²C address: 0x40, 0x41, 0x44, 0x45 (Default: 0x77)
- IC: INA219
- Dimensions: 25.4mm x 25.4mm
- Weight: 3.0g





<https://www.sparkfun.com/products/15176/3-1-19>