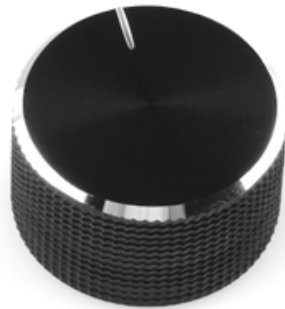




## Black Metal Knob - 14x24mm COM-10002



Knobs are a great way to finish off your project and make it easier to adjust the level of your death ray. This knob mates to a 6mm (+/- 0.3mm) shaft. The knob slides onto the potentiometer and holds tightly with a strong friction fit.

The main body of these knobs is metal with a plastic insert. The outside is knurled for precise adjustment.

### FEATURES:

- 14mm high
- 24mm diameter

