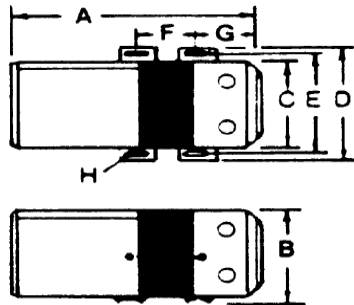
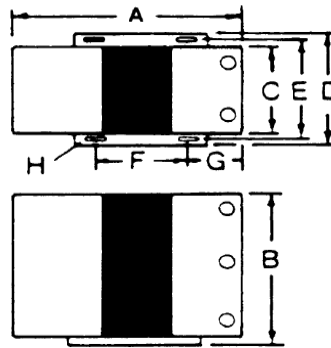


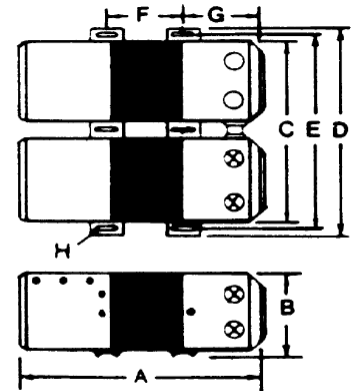
## CVS SERIES MECHANICAL DIMENSIONS



(A)



(B)



(C)

### WEIGHTS AND PHYSICAL DIMENSIONS (INCHES)

CATALOG NUMBER	VA	OUTLINE	A	B	C	D	E	F	G	H	WEIGHT (LBS)
23-13-030-2	30	A	6.12	5.19	3.47	4.00	3.50	3.00	1.75	.22x.59	7
23-13-060-2	60	A	6.94	5.19	3.47	4.00	3.50	3.00	1.75	.22x.59	9
23-22-112-2	120	A	8.12	5.19	3.47	4.00	3.50	3.00	2.44	.22x.59	13
23-23-125-8	250	A	10.5	7.56	4.75	5.63	4.75	4.12	3.03	.31x.69	28
23-23-150-8	500	A	13.00	6.5	8.12	9.00	8.12	5.62	3.06	.38x.81	37
23-23-210-8	1000	A	17.25	6.81	8.12	9.00	8.12	5.62	5.25	.38x.81	63
23-23-220-8	2000	B	17.58	9.44	10.56	12.75	11.75	3.88	5.19	.44x.69	109
23-23-230-8	3000	B	18.96	9.44	10.56	12.75	11.75	5.25	5.19	.44x.69	142
23-23-250-8	5000	B	28.53	9.44	10.56	12.75	11.75	8.25	8.88	.44x.69	222
23-28-275-6	7500	C	26.91	9.27	23.55	25.81	24.81	6.62	8.88	.44x.69	365

ALL RATINGS DEPEND ON NATURAL DRAFT AIR CIRCULATION FOR COOLING. THEY SHOULD NOT BE MOUNTED IN CONFINED OR ENCLOSED SPACES UNLESS SPECIAL PROVISIONS HAVE BEEN MADE FOR VENTILATION. THE AMBIENT AIR TEMPERATURE AROUND THE CVS MUST NOT EXCEED 50°C. IF AN ENCLOSURE IS USED THE MANUFACTURER SHOULD BE CONSULTED TO MAKE SURE THE ENCLOSURE WILL DISSIPATE HEAT OUTPUT OF THE CVS AND MAINTAIN AN ACCEPTABLE TEMPERATURE.

#### BTU/HR HEAT OUTPUT:

CATALOG NUMBER	BTU/HR	CATALOG NUMBER	BTU/HR
23-13-030-2	40	23-23-210-8	525
23-13-060-2	60	23-23-220-8	825
23-22-112-2	85	23-23-230-8	965
23-23-125-8	160	23-23-250-8	1605
23-23-150-8	300	23-28-275-6	4105