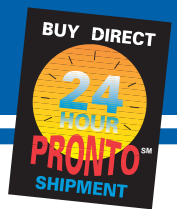
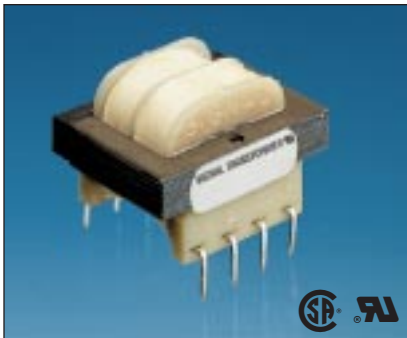


Split/Tran™ Low Power Transformers



Printed Circuit Mount — Split Bobbin with High Isolation



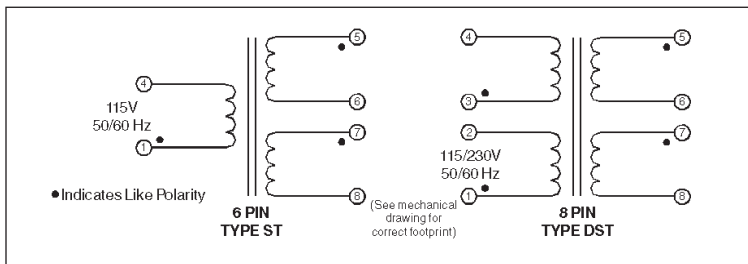
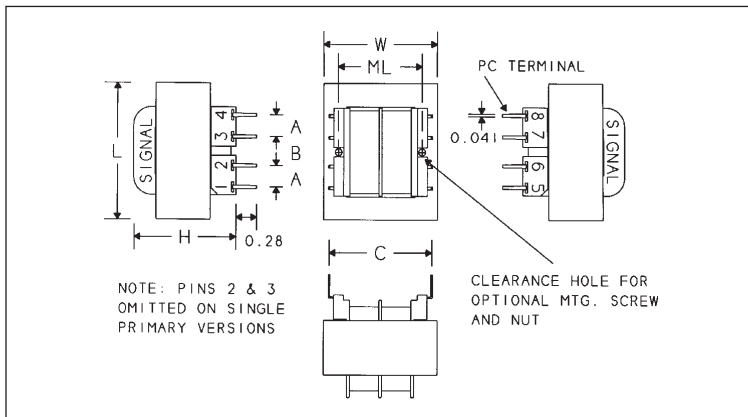
Signal's ST and DST transformers use a split bobbin that provides superior isolation and low capacitive coupling.

General Specifications

- Power – 1.1 VA to 36 VA
- Dielectric Strength – 2500VRMS Hipot
- Primaries – Single or dual primaries (115V or 115/230V -50/60 Hz)
- Secondaries – Series or parallel secondaries
- Electrostatic Shield – Not necessary, split bobbin construction
- Insulation – Class B insulation (130°C)
- Mounting Hardware – See chart

Agency Standards

- UL recognized to UL 506 (File #E63829)
- CSA certified to C22.2 #66 (File #LR 51265)



Part Number		Secondary RMS Rating	
Single 115V 6 Pin	Dual 115/230V 8 Pin	Series	Parallel
ST-2-10	DST-2-10	10VCT @ 0.11A	5V @ 0.22A
ST-3-10	DST-3-10	10VCT @ 0.25A	5V @ 0.5A
ST-4-10	DST-4-10	10VCT @ 0.6A	5A @ 1.2A
ST-5-10	DST-5-10	10VCT @ 1.2A	5V @ 2.4A
ST-6-10	DST-6-10	10VCT @ 2.0A	5V @ 4.0A
ST-7-10	DST-7-10	10VCT @ 3.6A	5V @ 7.2A
ST-2-12	DST-2-12	12.6VCT @ 0.09A	6.3V @ 0.18A
ST-3-12	DST-3-12	12.6VCT @ 0.2A	6.3V @ 0.4A
ST-4-12	DST-4-12	12.6VCT @ 0.5A	6.3V @ 1.0A
ST-5-12	DST-5-12	12.6VCT @ 1.0A	6.3V @ 2.0A
ST-6-12	DST-6-12	12.6VCT @ 1.6A	6.3V @ 3.2A
ST-7-12	DST-7-12	12.6VCT @ 2.85A	6.3V @ 5.7A
ST-2-16	DST-2-16	16VCT @ 0.07A	8V @ 0.14A
ST-3-16	DST-3-16	16VCT @ 0.15A	8V @ 0.3A
ST-4-16	DST-4-16	16VCT @ 0.4A	8V @ 0.8A
ST-5-16	DST-5-16	16VCT @ 0.8A	8V @ 1.6A
ST-6-16	DST-6-16	16VCT @ 1.25A	8V @ 2.5A
ST-7-16	DST-7-16	16VCT @ 2.25A	8V @ 4.5A
ST-2-20	DST-2-20	20VCT @ 0.055A	10V @ 0.11A
ST-3-20	DST-3-20	20VCT @ 0.12A	10V @ 0.24A
ST-4-20	DST-4-20	20VCT @ 0.3A	10V @ 0.6A
ST-5-20	DST-5-20	20VCT @ 0.6A	10V @ 1.2A
ST-6-20	DST-6-20	20VCT @ 1.0A	10V @ 2.0A
ST-7-20	DST-7-20	20VCT @ 1.8A	10V @ 3.6A
ST-2-24	DST-2-24	24VCT @ 0.045A	12V @ 0.09A
ST-3-24	DST-3-24	24VCT @ 0.1A	12V @ 0.2A
ST-4-24	DST-4-24	24VCT @ 0.25A	12V @ 0.5A
ST-5-24	DST-5-24	24VCT @ 0.5A	12V @ 1.0A
ST-6-24	DST-6-24	24VCT @ 0.8A	12V @ 1.6A
ST-7-24	DST-7-24	24VCT @ 1.5A	12V @ 3.0A
ST-2-28	DST-2-28	28VCT @ 0.04A	14V @ 0.08A
ST-3-28	DST-3-28	28VCT @ 0.085A	14V @ 0.17A
ST-4-28	DST-4-28	28VCT @ 0.2A	14V @ 0.4A
ST-5-28	DST-5-28	28VCT @ 0.42A	14V @ 0.84A
ST-6-28	DST-6-28	28VCT @ 0.7A	14V @ 1.4A
ST-7-28	DST-7-28	28VCT @ 1.3A	14V @ 2.6A
ST-2-36	DST-2-36	36VCT @ 0.03A	18V @ 0.06A
ST-3-36	DST-3-36	36VCT @ 0.065A	18V @ 0.13A
ST-4-36	DST-4-36	36VCT @ 0.17A	18V @ 0.34A
ST-5-36	DST-5-36	36VCT @ 0.35A	18V @ 0.7A
ST-6-36	DST-6-36	36VCT @ 0.55A	18V @ 1.1A
ST-7-36	DST-7-36	36VCT @ 1.0A	18V @ 2.0A
ST-2-48	DST-2-48	48VCT @ 0.023A	24V @ 0.046A
ST-3-48	DST-3-48	48VCT @ 0.05A	24V @ 0.1A
ST-4-48	DST-4-48	48VCT @ 0.125A	24V @ 0.25A
ST-5-48	DST-5-48	48VCT @ 0.25A	24V @ 0.5A
ST-6-48	DST-6-48	48VCT @ 0.4A	24V @ 0.8A
ST-7-48	DST-7-48	48VCT @ 0.75A	24V @ 1.5A
ST-2-56	DST-2-56	56VCT @ 0.02A	28V @ 0.04A
ST-3-56	DST-3-56	56VCT @ 0.045A	28V @ 0.09A
ST-4-56	DST-4-56	56VCT @ 0.11A	28V @ 0.22A
ST-5-56	DST-5-56	56VCT @ 0.22A	28V @ 0.44A
ST-6-56	DST-6-56	56VCT @ 0.35A	28V @ 0.7A
ST-7-56	DST-7-56	56VCT @ 0.65A	28V @ 1.3A
ST-2-120	DST-2-120	120VCT @ 0.01A	60V @ 0.02A
ST-3-120	DST-3-120	120VCT @ 0.02A	60V @ 0.04A
ST-4-120	DST-4-120	120VCT @ 0.05A	60V @ 0.1A
ST-5-120	DST-5-120	120VCT @ 0.1A	60V @ 0.2A
ST-6-120	DST-6-120	120VCT @ 0.16A	60V @ 0.32A
ST-7-120	DST-7-120	120VCT @ 0.3A	60V @ 0.6A

Size	VA	L	W	H	ML	A	B	C	Optional Mtg. Screw & Nut*	Wgt
2	1.1	1.37" 34.9mm	1.12" 28.6mm	.93" 23.8mm	—	.250" 6.4mm	.250" 6.4mm	1.200" 30.5mm	None	0.17 lbs 0.08 kg
3	2.4	1.37" 34.9mm	1.12" 28.6mm	1.18" 30.1mm	—	.250" 6.4mm	.250" 6.4mm	1.200" 30.5mm	None	0.25 lbs 0.11 kg
4	6	1.62" 41.3mm	1.31" 33.3mm	1.31" 33.3mm	1.06" 26.9mm	.250" 6.4mm	.350" 8.9mm	1.280" 32.5mm	4-40 x 1.37 Nylon 4-40 x 34.9mm	0.44 lbs 0.20 kg
5	12	1.87" 47.6mm	1.56" 39.7mm	1.43" 36.5mm	1.25" 31.8mm	.300" 7.6mm	.400" 10.2mm	1.410" 35.8mm	4-40 x 1.37 Nylon 4-40 x 34.9mm	0.70 lbs 0.32 kg
6	20	2.25" 57.2mm	1.87" 47.6mm	1.43" 36.5mm	1.50" 38.1mm	.300" 7.6mm	.400" 10.2mm	1.600" 40.6mm	4-40 x 1.37 Nylon 4-40 x 34.9mm	0.80 lbs 0.36 kg
7	36	2.62" 66.7mm	2.18" 55.5mm	1.56" 39.7mm	†	.400" 10.2mm	.400" 10.2mm	1.850" 47.0mm	†	1.1 lbs 0.50 kg

* Available from Signal: Part No. ST-MS (Screw) & Part No. ST-MN (Nut).
† Size 7 has 4 mtg. holes on 2.18 x 1.75 centers for a #6 screw. Need not be nylon.

CALL: 516-239-5777 • FAX: (24hrs) 516-239-7208
500 Bayview Avenue, Inwood, New York 11096

