

IEC Appliance Connector C14 with Fuseholder 1-pole

Types 6200, 6205

Types 6200, 6205



1-pole

Type 6202: for protection class II

1-pole



**Description**

- Panel Mount:  
Screw-on version from front or rear side, snap-in version from front side
- 2 Functions:  
Appliance Inlet Protection class I, Fuseholder for fuse-links 5 x 20 mm 1-pole
- Solder terminals or quick connect terminals
- Alternative: version with line filter [5200](#)
- Alternative: Fuseholder 2-pole [6220](#)

**Approvals**

- VDE License Number: 40011091
- UL License Number: E93617
- CSA License Number: 38456

**Characteristics**

- All single elements are already wired
- Plug removal necessary for fuse-link replacement  
The fuseholder is accessible from the equipment front  
With spare fuse compartment
- Qualified for use in equipment according IEC/EN 60950

**Other versions on request**

- Types for rivet mounting available upon request

**Weblinks**

[Approvals](#), [RoHS](#), [CHINA-RoHS](#), [e-Store](#), [SCHURTER-Stock-Check](#), [Distributor-Stock-Check](#)

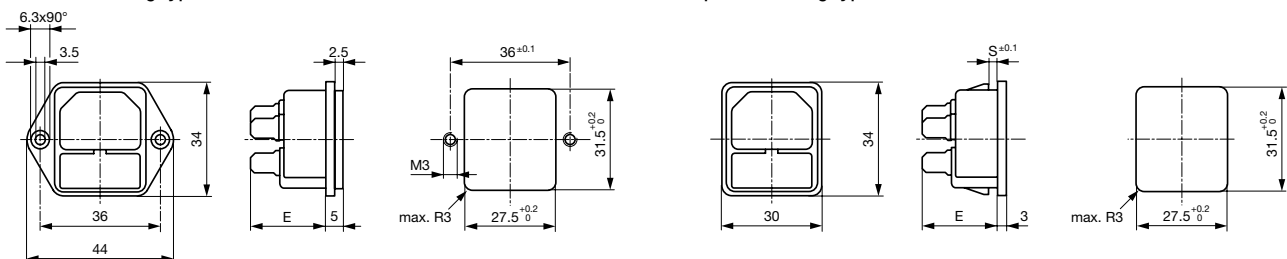
**Technical Data**

Ratings IEC	10A / 250VAC; 50Hz	Appliance-Inlet/-Outlet	C14 acc. to IEC/EN 60320-1, UL 498, CSA C22.2 no. 42 (for cold conditions) pin-temperature 70 °C, 10A, Protection class I
Ratings UL/CSA	10A / 250VAC; 60Hz	Fuseholder	1 pole, Shocksafe category PC2 acc. to IEC 60127-6, for fuse-links 5 x 20mm
Dielectric Strength	> 2 kVAC between L-N > 2 kVAC between L/N-PE (1 min/50Hz)	Rated Power Acceptance @ Ta 23 °C	5 x 20: 2W (1 pole)
Allowable Operation Temp.	-25 °C to 70 °C	Power Acceptance @ Ta > 23°C	Admissible power acceptance at higher ambient temperature see derating curves
Degree of Protection	from front side IP 40 acc. to IEC 60529		
Protection Class	Suitable for appliances with protection class I acc. to IEC 61140		
Terminal	Solder terminals or quick connect terminals, tin-plated		
Panel Thickness s	Screw-on: max 6mm Mounting screw torque max 0.5Nm Snap-in: 1/ 1.5/ 2/ 2.5/ 3 mm		
Material: Housing	Thermoplastic, black, UL 94V-0		

**Dimensions**

Screw-on mounting types 6200/05

Snap-in mounting types 6200/05

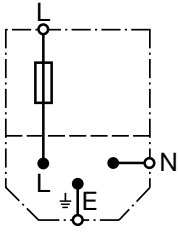


E: solder terminals 20.5 mm  
E: quick-connect terminals 23.5 mm

E: solder terminals 22.5 mm  
E: quick-connect terminals 25.5 mm  
S: 1.0/1.5/2.0/2.5/3.0 mm

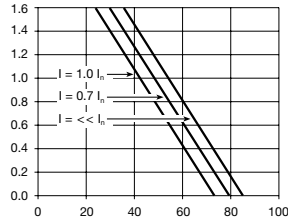
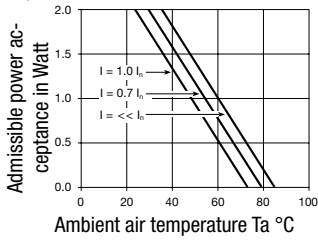
## Diagrams

6200/05



## Derating Curves

1-pole



## Variants

[Distributor-Stock-Check](#) | [SCHURTER-Stock-Check](#) | [e-Store](#)

Socket and fuse-carrier included

Protection Class	Panel mounting	Panel Thickness s [mm]	Fuseholder	Terminal	internally wired	Order Number
I	Screw-on	-	1 pole	Quick connect terminals 4.8 x 0.8 mm		6200.2200
I	Screw-on	-	1 pole	Quick connect terminals 6.3 x 0.8 mm		6200.2300
I	Screw-on	-	1 pole	Solder terminals 3.8 x 0.8 mm		6200.2100
I	Snap-in	1	1 pole	Quick connect terminals 4.8 x 0.8 mm		6200.4210
I	Snap-in	1.5	1 pole	Quick connect terminals 4.8 x 0.8 mm		6200.4215
I	Snap-in	2	1 pole	Quick connect terminals 4.8 x 0.8 mm		6200.4220
I	Snap-in	2.5	1 pole	Quick connect terminals 4.8 x 0.8 mm		6200.4225
I	Snap-in	3	1 pole	Quick connect terminals 4.8 x 0.8 mm		6200.4230
I	Snap-in	1	1 pole	Quick connect terminals 6.3 x 0.8 mm		6200.4310
I	Snap-in	1.5	1 pole	Quick connect terminals 6.3 x 0.8 mm		6200.4315
I	Snap-in	2	1 pole	Quick connect terminals 6.3 x 0.8 mm		6200.4320
I	Snap-in	2.5	1 pole	Quick connect terminals 6.3 x 0.8 mm		6200.4325
I	Snap-in	3	1 pole	Quick connect terminals 6.3 x 0.8 mm		6200.4330
I	Snap-in	1	1 pole	Solder terminals 3.8 x 0.8 mm		6200.4110
I	Snap-in	1.5	1 pole	Solder terminals 3.8 x 0.8 mm		6200.4115
I	Snap-in	2	1 pole	Solder terminals 3.8 x 0.8 mm		6200.4120
I	Snap-in	2.5	1 pole	Solder terminals 3.8 x 0.8 mm		6200.4125
I	Snap-in	3	1 pole	Solder terminals 3.8 x 0.8 mm		6200.4130

**Packaging unit** 50 Pcs

**Accessory**

**Description**



Assorted Covers  
Rear Cover

	0859.0047
	4311.9403



Cord retaining kits  
Cord retaining strain relieve

Flat head, A	4700.0001
Countersunk, B	4700.0002

**Mating Outlets/Connectors**

**Category / Description**



Appliance Outlet

IEC appliance outlet F, screw-on mounting, front side, solder /quick connect terminal	4787
IEC appliance outlet F, screw-on mounting, front side, solder /quick connect terminal	4788
IEC appliance outlet F oder H, screw-on mounting, front side, solder/PCB/quick connect terminal	5091
IEC appliance outlet F oder H, screw-on mounting, front side, solder/quick connect terminal	5092

Connector



IEC cord connector C15, rewirable, straight	0101
IEC cord connector C15A, rewirable, straight	0102
IEC cord connector C15A, rewirable, straight	0102-G
IEC cord connector C15A, rewirable, angled	0112
IEC cord connector C13, rewirable, angled	4012
IEC cord connector C13, rewirable, angled	4013
IEC cord connector C13, rewirable, straight	4020
IEC cord connector C13, rewirable, straight	4021
IEC cord connector C13, rewirable, straight	4022
IEC cord connector C13, rewirable, angled	4300-06

...

Power Supply or Interconnection Cord



Power Cord with IEC Appliance Connector C13, angled, 70°C	0311
Power Cord with IEC Appliance Connector C13, angled, 70°C	3011
Power Cord with IEC Appliance Connector C13, angled, 70°C	3012
Power Cord with IEC Appliance Connector C13, angled, 70°C	3013
Power Cord with IEC Appliance Connector C13, 70°C	3020
Power Cord with IEC Appliance Connector C13, straight, 70°C	3027
Power Cord with IEC Appliance Connector C13, straight, 70°C	302U
Power Cord with IEC Appliance Connector C13, straight, 70°C	3030
Power Cord with IEC Appliance Connector C13, angled, 70°C	311L
Power Cord with IEC Appliance Connector C13, angled, 70°C	312L

...