

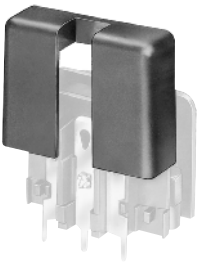
**Insulating cover**

The terminals of the Schurter appliance couplers can be protected against unintentional contact by the use of an insulation cover.

They are made of flexible thermoplastic (UL 94V-0, black) and can be easily mounted from the rear to the corresponding appliance couplers.

**Order Numbers**

	suitable for
0859.0047	KEA (without KEA-Print) KEB1, DC11, 6200, 6202, 6205, 6220, 4721, 4723, 4793, 4798, 6600-3, 6600-4, 4707, C20F
0859.0048	6100-3, 6100-4, 6102-3, 6102-5, 5110, FGS, KFS, KFX
0859.0072	KEC, KFC, FKH, FKI, FKHD, FKID
0859.0074	KD, 5145, 6145
0859.0075	KEB2, KFB2, 0723, 4797, DC12, KFB1, 4719, KFA, 5200, 5220
0859.0076	KE, KM, KMF, EC11, EC12
0859.0077	CD
0859.0108	CE, EC12
0859.0109	CG, KG, EF11, DF12, DF11
0859.0086	8843-FL, 8843-FLR



**Cover GSF1**

**Order Number**

0098.0078



**Cord retaining kits**

For protection against loosening or accidental disconnection of the plug connector. Can also be mounted later.

The correct kit type (A-M) for each combination of fixed and free components is shown in the selection chart on page 172. The corresponding Order No. for each kit type is shown in the smaller chart.

Horizontal flanged components are secured to the panel using the kit supplied. Vertical flanged or snap-in components require additional drilling for the cord retaining kit as shown in the diagrams below.

Each cord retaining kit consists of:

- 1 Stainless steel retaining clip
- 2 Nickel plated brass pillars
- 2 Nickel plated brass nuts
- 2 Nickel plated beryllium copper crinkle washers

Order Numbers	Kit type
4700.0001	A
4700.0002	B
4700.0003	C
4700.0004	D
4700.0005	E
4700.0006	F
4700.0007	G
4700.0008	H
4700.0009	J
4700.0010	K
4700.0011	L
4700.0012	M

Cut-aways or countersinks on pillars to face inwards.

# APPLIANCE COUPLERS

## Accessories

### Cord retaining kits Selection Chart

Appliance inlet or outlet	Plug or connector for cable																																				
	KEA snap-in	KEA / KFA screw-on	KEB I / DC 11 / DC 12 snap-in	KEB II / KFB I / DC 11 / DC 12 screw-on	KEB II / KFB II	KEC / KFC	KD / CD	KE / CE	KG / CG	KFS / KFX	FELCOM / 54/64	4707	4721 screw-on	472x snap-in	4752	4754 / 4758	4793	4798 screw-on / C20F	5110 screw-on	5200 screw-on	5220 screw-on	6100 screw-on	6100 snap-in	6110 screw-on	6110 snap-in	6200 screw-on	6200 snap-in	6220 screw-on	6220 snap-in	6600 screw-on	6600 snap-in	0723	KM	EC, EF, EG			
4781.0000																																					
4781.0100	A	B	A	B	A	A	A	A	A	C	A	B								C	B	B	C	A	C	A											
4782.0000																																					
4782.0100																																					
4732.0000											E		D	E	E	E																					
4735.0000											G		F	G	G	G																					
4795.0000																	L	K																			
4796.0000																																					

