

IEC Appliance Inlet C14 with Filter, Fuseholder 1- or 2-pole, optional Voltage Selector (step switch)



Screw-on mounting from front side
 Version with ground line choke
 without voltage selector
 Fuse drawer must be ordered separately (see accessories).



Snap-in mounting from front side
 without voltage selector
 Fuse drawer must be ordered separately (see accessories).



Screw-on mounting from rear side
 without voltage selector
 Fuse drawer must be ordered separately (see accessories).



Approvals and Compliances

Description

- Panel Mount :
 Screw-on version from front or rear side, snap-in version from front side
- 4 Functions :
 Appliance Inlet Protection class I , Fuseholder for fuse-links 5 x 20 mm 1- or 2-pole , with or without voltage selector (step switch) , Line filter in standard and medical version
- V-Lock notch standard
- Quick connect terminals or wires

Unique Selling Proposition

- Reduces noise on the ground wire
- Interrupts ground loops
- High asymmetrical attenuation
- V-Lock cord retaining

Characteristics

- Rear side mounting for efficient costsaving assembly
- Suitable for assembly in metal plated plastic housings
- All single elements are already wired
- Plug removal necessary for fuse-link replacement
- Suitable for use in equipment according to IEC/UL 60950
- Suitable for use in medical equipment according to IEC/UL 60601-1

Other versions on request

- Capacity CX 100 nF

References

Alternative: version without line filter [KEA](#)
 Alternative: Standard version

Weblinks

[pdf datasheet](#), [html-datasheet](#), [General Product Information](#), [Distributor-Stock-Check](#), [Accessories](#), [Detailed request for product](#), [Microsite](#)

Technical Data

| | |
|---------------------------------|--|
| Ratings IEC | 1 - 10A @ Ta 40 °C / 250 VAC; 50Hz |
| Ratings UL/CSA | 1 - 10A @ Ta 40 °C / 125 VAC; 60Hz |
| Leakage Current | standard < 0.5 mA (250 V / 60 Hz) medical < 5 µA (250 V / 60 Hz) |
| Dielectric Strength | > 1.7 kVDC between L-N > 2.7 kVDC between L/N-PE Test voltage (2 sec) |
| Allowable Operation Temperature | -25 °C to 85 °C |
| Climatic Category | 25/085/21 acc. to IEC 60068-1 |
| IP-Protection | from front side IP 40 acc. to IEC 60529 |
| Protection Class | Suitable for appliances with protection class I acc. to IEC 61140 |
| Terminal | Quick connect terminals 6.3 x 0.8 mm Flexible wire AWG18, 150 mm |
| Panel Thickness S | Screw: max 8 mm Mounting screw torque max 0.5 Nm Snap-in: 0.8 mm to 3 mm |
| Material: Housing | Thermoplastic, black, UL 94V-0 |

| | |
|-----------------------------------|--|
| appliance inlet/-outlet | C14 acc. to IEC 60320-1, UL 498, CSA C22.2 no. 42 (for cold conditions) pin-temperature 70 °C, 10A, Protection Class I |
| Fuseholder | 1 or 2 pole, Shocksafe category PC2 acc. to IEC 60127-6, for fuse-links 5 x 20 mm |
| Rated Power Acceptance @ Ta 23 °C | 5 x 20: 2W (1 pole)/ 1.6W (2-pole) per pole |
| Power Acceptance @ Ta > 23°C | Admissible power acceptance at higher ambient temperature see derating curves |
| Voltage Selector | optional, step, 3 pos. |
| Line Filter | Standard and Medical Version, IEC 60939, UL 1283, CSA C22.2 no. 8 Technical Details |
| MTBF | > 1'700'000 h acc. to MIL-HB-217 F |




Approvals and Compliances

Detailed information on product approvals, code requirements, usage instructions and detailed test conditions can be looked up in [Details about Approvals](#)

Approvals









The approval mark is used by the testing authorities to certify compliance with the safety requirements placed on electronic products.

Approval Reference Type: KFA

| Approval Logo | Certificates | Certification Body | Description |
|--|---------------|--------------------|---|
|  | VDE Approvals | VDE | Certificate Number: 40004665 (FKE, FKF, FKV, FKW) |
|  | UL Approvals | UL | UL File Number: E72928 (FKE, FKF, FKV, FKW) |
|  | CQC Approvals | CQC | CCC File Number: |




Product standards

Product standards that are referenced

| Organization | Design | Standard | Description |
|---|-----------------------|------------------|---|
|  | Designed according to | IEC 60320-1 | Appliance couplers for household and similar general purposes |
|  | Designed according to | IEC 60939 | Passive filters for suppressing electromagnetic interference |
|  | Designed according to | IEC 60127-6 | Miniature fuses. Part 6. Fuse-holders for miniature fuse-links |
|  | Designed according to | IEC 61058-1 | Switches for appliances. Part 1. General requirements |
|  | Designed according to | UL 498 | Standard for Attachment Plugs and Receptacles |
|  | Designed according to | UL 1283 | Electromagnetic interference filters |
|  | Designed according to | CSA C22.2 no. 42 | General Use Receptacles, Attachment Plugs, and Similar Wiring Devices |
|  | Designed according to | CSA C22.2 no. 8 | Electromagnetic interference (EMI) filters |







Application standards

Application standards where the product can be used

| Organization | Design | Standard | Description |
|--|--------------------------------|--------------|---|
|  | Designed for applications acc. | IEC/UL 60950 | IEC 60950-1 includes the basic requirements for the safety of information technology equipment. |
|  | Designed for applications acc. | IEC 60601-1 | Medical electrical equipment - Part 1: General requirements for basic safety and essential performance |
|  | Designed for applications acc. | IEC 60335-1 | Safety of electrical appliances for household and similar purposes. Meets the requirements for appliances in unattended use. This includes the enhanced requirements of glow wire tests acc. to IEC 60695-2-12 and -13. |

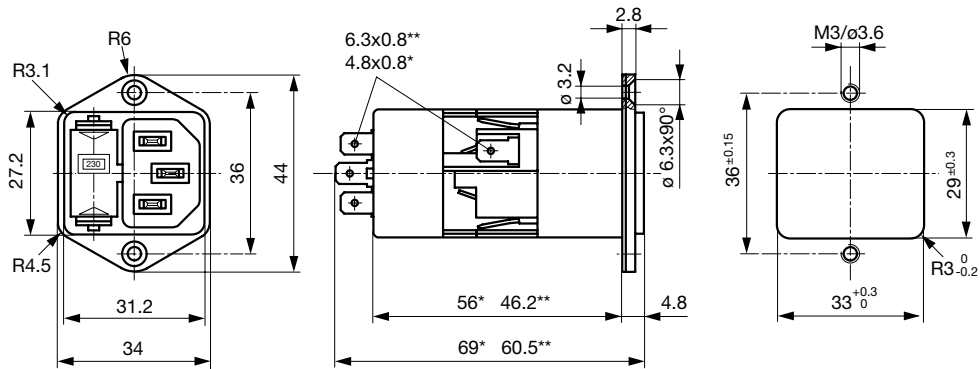
Compliances

The product complies with following Guide Lines

| Identification | Details | Initiator | Description |
|--|------------------------------|-------------|--|
|  | CE declaration of conformity | SCHURTER AG | The CE marking declares that the product complies with the applicable requirements laid down in the harmonisation of Community legislation on its affixing in accordance with EU Regulation 765/2008. |
|  | RoHS | SCHURTER AG | EU Directive RoHS 2011/65/EU |
|  | China RoHS | SCHURTER AG | The law SJ / T 11363-2006 (China RoHS) has been in force since 1 March 2007. It is similar to the EU directive RoHS. |
|  | REACH | SCHURTER AG | On 1 June 2007, Regulation (EC) No 1907/2006 on the Registration, Evaluation, Authorization and Restriction of Chemicals 1 (abbreviated as "REACH") entered into force. |
|  | MicrositeV-Lock | SCHURTER AG | V-Lock system are based on a matching plug-dose combination. The connector is equipped with a notch intended for use with the latching cordset. The cord latching system prevents against accidental removal of the cordset. |
|  | Medical Equipment | SCHURTER AG | Suitable for use in medical equipment according to IEC/UL 60601-1 |

Dimension [mm]

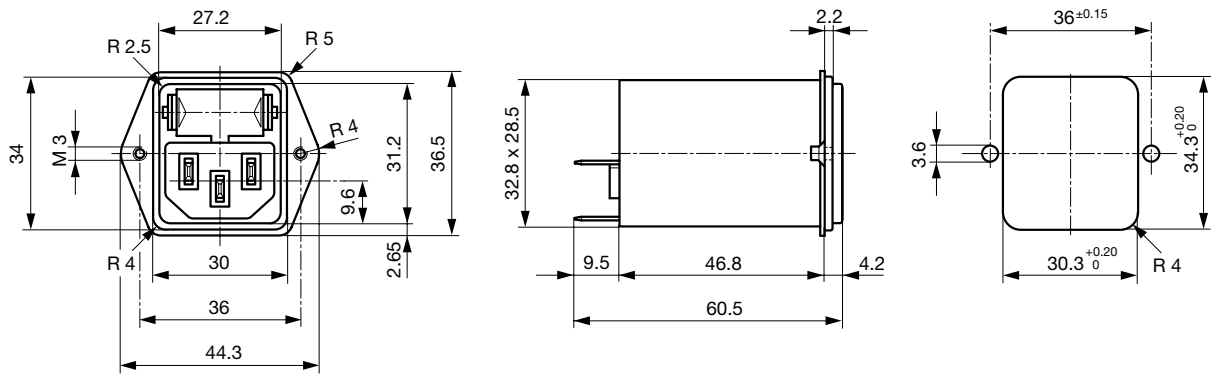
Screw-on mounting from front side



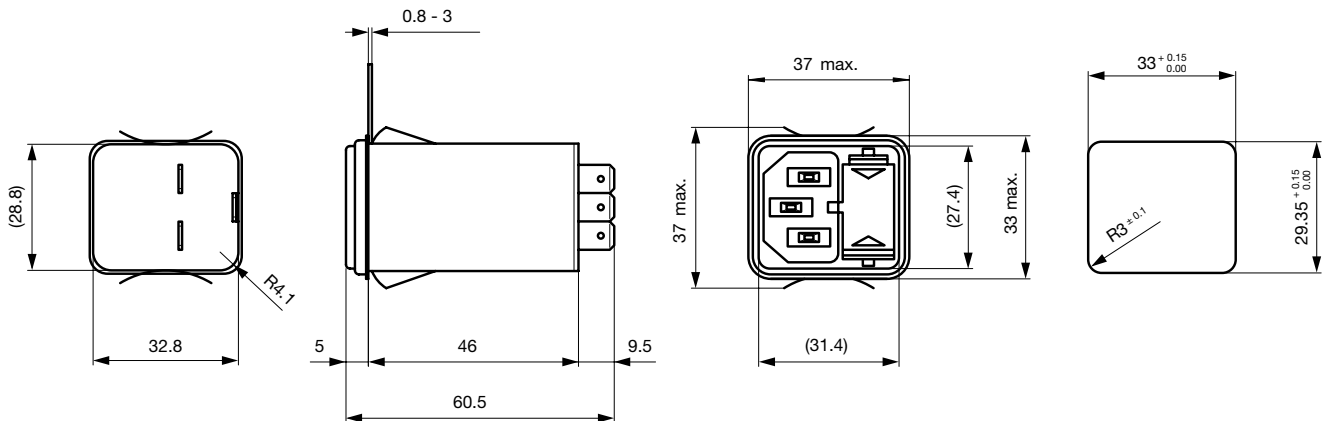
* with voltage selector

** without voltage selector

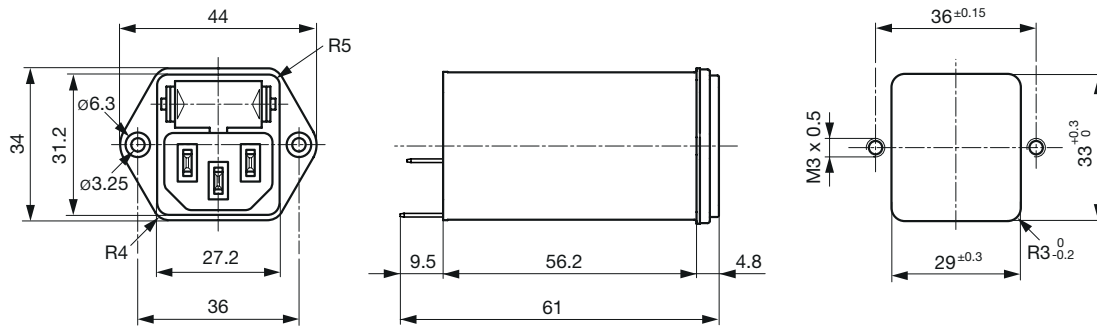
Screw-on mounting from rear side



Snap-in mounting



Screw-on mounting from front side with ground line choke

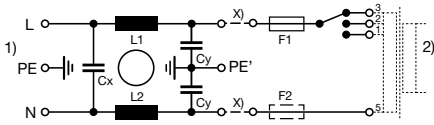


Technical Data of Filter-Components

| Rated Current [A] | Filter-Type | Inductance L1/ L2 [mH] | Inductance L3 [mH] | Capacitance CX [nF] | Capacitance CY [nF] | R [MΩ] |
|-------------------|---|---------------------------|-----------------------|------------------------|------------------------|--------|
| 1 | Standard Version | 2 x 10 | - | 68 | 2.2 | - |
| 2 | Standard Version | 2 x 4 | - | 68 | 2.2 | - |
| 4 | Standard Version | 2 x 1.5 | - | 68 | 2.2 | - |
| 6 | Standard Version | 2 x 0.8 | - | 68 | 2.2 | - |
| 10 | Standard Version | 2 x 0.3 | - | 68 | 2.2 | - |
| 1 | Standard Version with Ground Line Choke | 2 x 10 | 0.6 | 100 | 2.2 | - |
| 2 | Standard Version with Ground Line Choke | 2 x 4 | 0.6 | 100 | 2.2 | - |
| 4 | Standard Version with Ground Line Choke | 2 x 1.5 | 0.6 | 100 | 2.2 | - |
| 6 | Standard Version with Ground Line Choke | 2 x 0.8 | 0.6 | 100 | 2.2 | - |
| 10 | Standard Version with Ground Line Choke | 2 x 0.3 | 0.6 | 100 | 2.2 | - |
| 1 | Medical Version (M5) | 2 x 10 | - | 68 | - | 1 |
| 2 | Medical Version (M5) | 2 x 4 | - | 68 | - | 1 |
| 4 | Medical Version (M5) | 2 x 1.5 | - | 68 | - | 1 |
| 6 | Medical Version (M5) | 2 x 0.8 | - | 68 | - | 1 |
| 10 | Medical Version (M5) | 2 x 0.3 | - | 68 | - | 1 |
| 1 | Medical Version (M80) | 2 x 10 | - | 68 | 0.47 | 1 |
| 2 | Medical Version (M80) | 2 x 4 | - | 68 | 0.47 | 1 |
| 4 | Medical Version (M80) | 2 x 1.5 | - | 68 | 0.47 | 1 |
| 6 | Medical Version (M80) | 2 x 0.8 | - | 68 | 0.47 | 1 |
| 10 | Medical Version (M80) | 2 x 0.3 | - | 68 | 0.47 | 1 |
| 1 | Medical Version (M5) with Ground Line Choke | 2 x 10 | 0.15 | 100 | - | 1 |
| 2 | Medical Version (M5) with Ground Line Choke | 2 x 4 | 0.6 | 100 | - | 1 |
| 4 | Medical Version (M5) with Ground Line Choke | 2 x 1.5 | 0.6 | 100 | - | 1 |
| 6 | Medical Version (M5) with Ground Line Choke | 2 x 0.8 | 0.6 | 100 | - | 1 |
| 10 | Medical Version (M5) with Ground Line Choke | 2 x 0.3 | 0.15 | 100 | - | 1 |

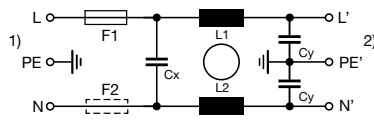
Diagrams

Standard version
with voltage selector



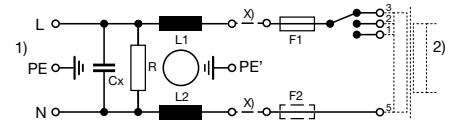
x) external connection to be made by the customer
 1) Line
 2) Load

Standard version
without voltage selector



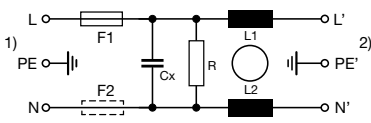
1) Line
 2) Load

Medical version (M5)
with voltage selector



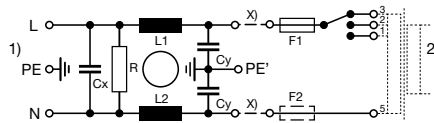
x) external connection to be made by the customer
 1) Line
 2) Load

Medical version (M5)
without voltage selector



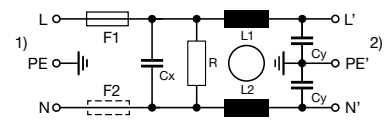
1) Line
 2) Load

Medical version (M80)
with voltage selector



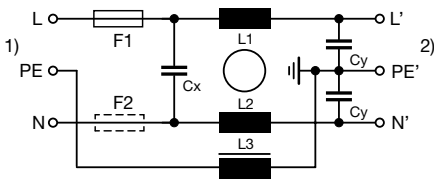
x) external connection to be made by the customer
 1) Line
 2) Load

Medical version (M80)
without voltage selector



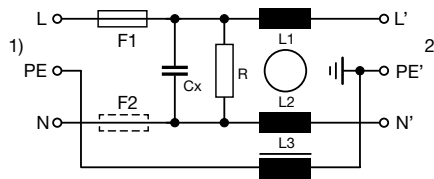
1) Line
 2) Load

Standard version with ground line choke



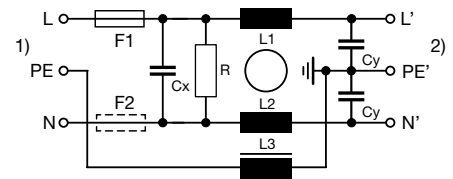
1) Line
 2) Load

Medical version (M5) with ground line choke



1) Line
 2) Load

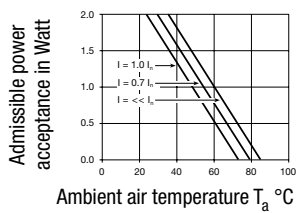
Medical version (M80) with ground line choke



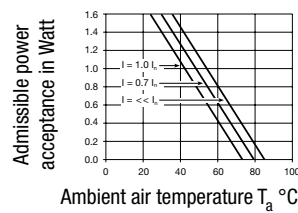
1) Line
 2) Load

Derating Curves

1-pole



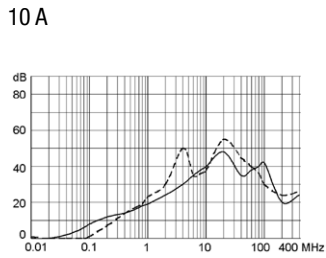
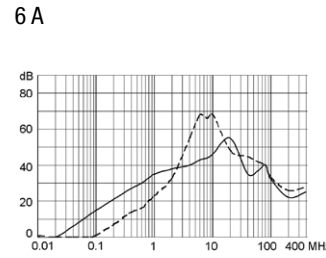
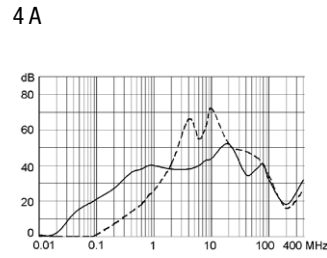
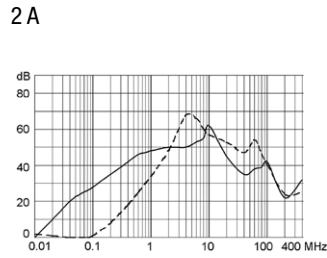
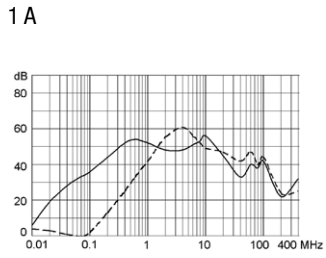
2-pole



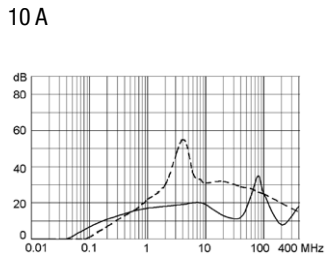
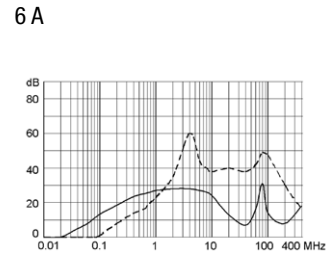
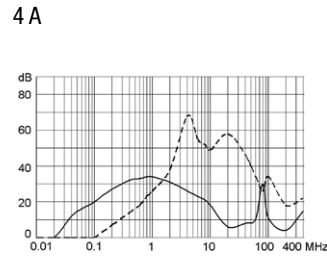
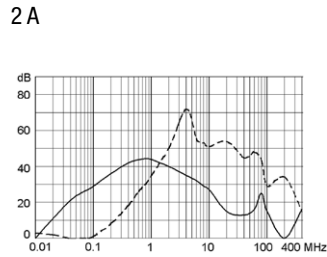
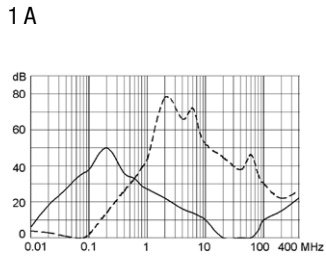
Attenuation Loss

Standard version

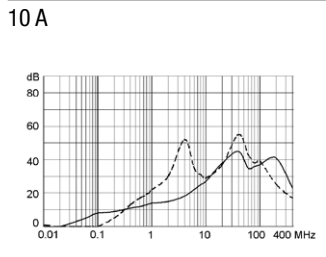
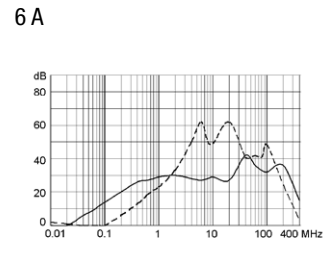
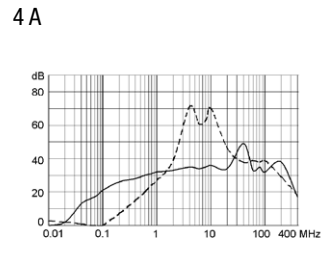
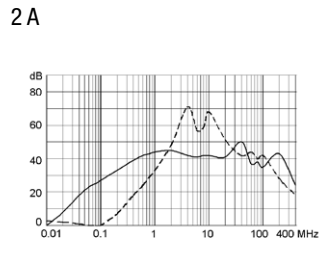
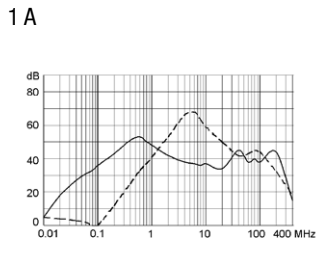
--- 50Ω differential mode ____ 50Ω common mode



Medical version (M5)

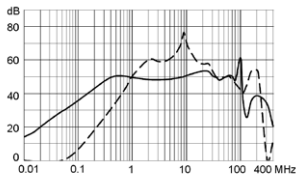


Medical version (M80)

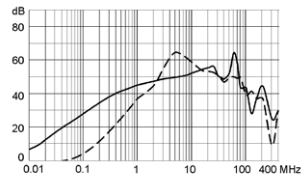


Standard with Earth Line Choke

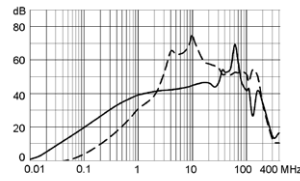
1 A



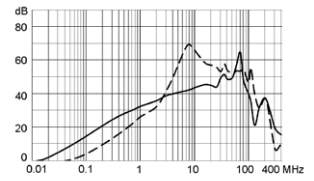
2 A



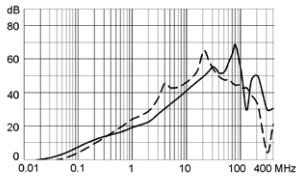
4 A



6 A

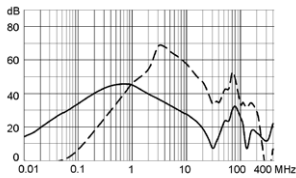


10 A

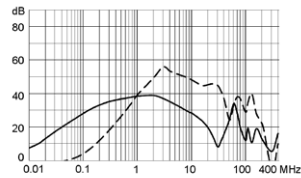


Medical (M5) with Earth Line Choke

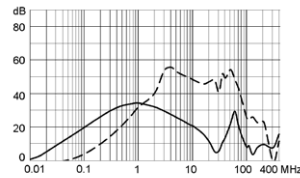
1 A



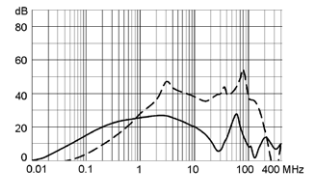
2 A



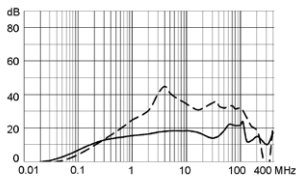
4 A



6 A



10 A



All Variants

| Rated Current [A] | Filter-Type | Panel mounting | Mounting side | Fuseholder | Terminal | Voltage Selector | Order Number |
|-------------------|------------------|----------------|---------------|------------|--------------------------------------|------------------|--------------|
| 1 | Standard Version | Snap-in | Front Side | 1-pole | Quick connect terminals 6.3 x 0.8 mm | - | 4301.6011 |
| 1 | Standard Version | Snap-in | Front Side | 2-pole | Quick connect terminals 6.3 x 0.8 mm | - | 4301.6001 |
| 2 | Standard Version | Snap-in | Front Side | 1-pole | Quick connect terminals 6.3 x 0.8 mm | - | 4301.6012 |
| 2 | Standard Version | Snap-in | Front Side | 2-pole | Quick connect terminals 6.3 x 0.8 mm | - | 4301.6002 |
| 4 | Standard Version | Snap-in | Front Side | 1-pole | Quick connect terminals 6.3 x 0.8 mm | - | 4301.6013 |
| 4 | Standard Version | Snap-in | Front Side | 2-pole | Quick connect terminals 6.3 x 0.8 mm | - | 4301.6003 |
| 6 | Standard Version | Snap-in | Front Side | 1-pole | Quick connect terminals 6.3 x 0.8 mm | - | 4301.6014 |
| 6 | Standard Version | Snap-in | Front Side | 2-pole | Quick connect terminals 6.3 x 0.8 mm | - | 4301.6004 |
| 10 | Standard Version | Snap-in | Front Side | 1-pole | Quick connect terminals 6.3 x 0.8 mm | - | 4301.6015 |
| 10 | Standard Version | Snap-in | Front Side | 2-pole | Quick connect terminals 6.3 x 0.8 mm | - | 4301.6005 |

| Rated Current [A] | Filter-Type | Panel mounting | Mounting side | Fuseholder | Terminal | Voltage Selector | Order Number |
|-------------------|---|----------------|---------------|------------|--------------------------------------|------------------|--------------|
| 1 | Standard Version | Screw | Front Side | 1-pole | Quick connect terminals 6.3 x 0.8 mm | - | 4301.5011 |
| 1 | Standard Version | Screw | Front Side | 1-pole | Quick connect terminals 6.3 x 0.8 mm | 3 pos. | 4301.5051 |
| 1 | Standard Version | Screw | Front Side | 2-pole | Quick connect terminals 6.3 x 0.8 mm | - | 4301.5001 |
| 1 | Standard Version | Screw | Front Side | 2-pole | Quick connect terminals 6.3 x 0.8 mm | 3 pos. | 4301.5041 |
| 1 | Standard Version | Screw | Rear Side | 1-pole | Flexible wire AWG18 | - | 4301.7311 |
| 1 | Standard Version | Screw | Rear Side | 2-pole | Flexible wire AWG18 | - | 4301.7301 |
| 1 | Standard Version | Screw | Rear Side | 2-pole | Quick connect terminals 6.3 x 0.8 mm | - | 4301.7001 |
| 2 | Standard Version | Screw | Front Side | 1-pole | Quick connect terminals 6.3 x 0.8 mm | - | 4301.5012 |
| 2 | Standard Version | Screw | Front Side | 1-pole | Quick connect terminals 6.3 x 0.8 mm | 3 pos. | 4301.5052 |
| 2 | Standard Version | Screw | Front Side | 2-pole | Quick connect terminals 6.3 x 0.8 mm | - | 4301.5002 |
| 2 | Standard Version | Screw | Front Side | 2-pole | Quick connect terminals 6.3 x 0.8 mm | 3 pos. | 4301.5042 |
| 2 | Standard Version | Screw | Rear Side | 2-pole | Quick connect terminals 6.3 x 0.8 mm | - | 4301.7002 |
| 4 | Standard Version | Screw | Front Side | 1-pole | Quick connect terminals 6.3 x 0.8 mm | - | 4301.5013 |
| 4 | Standard Version | Screw | Front Side | 1-pole | Quick connect terminals 6.3 x 0.8 mm | 3 pos. | 4301.5053 |
| 4 | Standard Version | Screw | Front Side | 2-pole | Quick connect terminals 6.3 x 0.8 mm | - | 4301.5003 |
| 4 | Standard Version | Screw | Front Side | 2-pole | Quick connect terminals 6.3 x 0.8 mm | 3 pos. | 4301.5043 |
| 4 | Standard Version | Screw | Rear Side | 1-pole | Quick connect terminals 6.3 x 0.8 mm | - | 4301.7013 |
| 4 | Standard Version | Screw | Rear Side | 2-pole | Quick connect terminals 6.3 x 0.8 mm | - | 4301.7003 |
| 6 | Standard Version | Screw | Front Side | 1-pole | Quick connect terminals 6.3 x 0.8 mm | - | 4301.5014 |
| 6 | Standard Version | Screw | Front Side | 1-pole | Quick connect terminals 6.3 x 0.8 mm | 3 pos. | 4301.5054 |
| 6 | Standard Version | Screw | Front Side | 2-pole | Quick connect terminals 6.3 x 0.8 mm | - | 4301.5004 |
| 6 | Standard Version | Screw | Front Side | 2-pole | Quick connect terminals 6.3 x 0.8 mm | 3 pos. | 4301.5044 |
| 6 | Standard Version | Screw | Rear Side | 1-pole | Quick connect terminals 6.3 x 0.8 mm | - | 4301.7014 |
| 6 | Standard Version | Screw | Rear Side | 2-pole | Quick connect terminals 6.3 x 0.8 mm | - | 4301.7004 |
| 10 | Standard Version | Screw | Front Side | 1-pole | Quick connect terminals 6.3 x 0.8 mm | - | 4301.5015 |
| 10 | Standard Version | Screw | Front Side | 1-pole | Quick connect terminals 6.3 x 0.8 mm | 3 pos. | 4301.5055 |
| 10 | Standard Version | Screw | Front Side | 2-pole | Quick connect terminals 6.3 x 0.8 mm | - | 4301.5005 |
| 10 | Standard Version | Screw | Front Side | 2-pole | Quick connect terminals 6.3 x 0.8 mm | 3 pos. | 4301.5045 |
| 10 | Standard Version | Screw | Rear Side | 1-pole | Quick connect terminals 6.3 x 0.8 mm | - | 4301.7015 |
| 10 | Standard Version | Screw | Rear Side | 2-pole | Quick connect terminals 6.3 x 0.8 mm | - | 4301.7005 |
| 1 | Standard Version with Ground Line Choke | Screw | Front Side | 2-pole | Quick connect terminals 6.3 x 0.8 mm | - | 4301.8050 |
| 2 | Standard Version with Ground Line Choke | Screw | Front Side | 2-pole | Quick connect terminals 6.3 x 0.8 mm | - | 4301.8051 |
| 4 | Standard Version with Ground Line Choke | Screw | Front Side | 2-pole | Quick connect terminals 6.3 x 0.8 mm | - | 4301.8052 |
| 6 | Standard Version with Ground Line Choke | Screw | Front Side | 2-pole | Quick connect terminals 6.3 x 0.8 mm | - | 4301.8053 |

| Rated Current [A] | Filter-Type | Panel mounting | Mounting side | Fuseholder | Terminal | Voltage Selector | Order Number |
|-------------------|---|----------------|---------------|------------|--------------------------------------|------------------|--------------|
| 10 | Standard Version with Ground Line Choke | Screw | Front Side | 2-pole | Quick connect terminals 6.3 x 0.8 mm | - | 4301.8054 |
| 1 | Medical Version (M5) | Snap-in | Front Side | 2-pole | Quick connect terminals 6.3 x 0.8 mm | - | 4301.6201 |
| 2 | Medical Version (M5) | Snap-in | Front Side | 2-pole | Quick connect terminals 6.3 x 0.8 mm | - | 4301.6203 |
| 4 | Medical Version (M5) | Snap-in | Front Side | 2-pole | Quick connect terminals 6.3 x 0.8 mm | - | 4301.6205 |
| 6 | Medical Version (M5) | Snap-in | Front Side | 2-pole | Flexible wire AWG18 | - | 4301.6307 |
| 6 | Medical Version (M5) | Snap-in | Front Side | 2-pole | Quick connect terminals 6.3 x 0.8 mm | - | 4301.6207 |
| 1 | Medical Version (M5) | Screw | Front Side | 2-pole | Quick connect terminals 6.3 x 0.8 mm | 3 pos. | 4301.5241 |
| 1 | Medical Version (M5) | Screw | Rear Side | 2-pole | Quick connect terminals 6.3 x 0.8 mm | - | 4301.7201 |
| 2 | Medical Version (M5) | Screw | Front Side | 2-pole | Quick connect terminals 6.3 x 0.8 mm | - | 4301.5203 |
| 2 | Medical Version (M5) | Screw | Front Side | 2-pole | Quick connect terminals 6.3 x 0.8 mm | 3 pos. | 4301.5243 |
| 2 | Medical Version (M5) | Screw | Rear Side | 2-pole | Quick connect terminals 6.3 x 0.8 mm | - | 4301.7203 |
| 4 | Medical Version (M5) | Screw | Front Side | 2-pole | Quick connect terminals 6.3 x 0.8 mm | - | 4301.5205 |
| 4 | Medical Version (M5) | Screw | Front Side | 2-pole | Quick connect terminals 6.3 x 0.8 mm | 3 pos. | 4301.5245 |
| 4 | Medical Version (M5) | Screw | Rear Side | 2-pole | Quick connect terminals 6.3 x 0.8 mm | - | 4301.7205 |
| 6 | Medical Version (M5) | Screw | Front Side | 1-pole | Quick connect terminals 6.3 x 0.8 mm | - | 4301.5217 |
| 6 | Medical Version (M5) | Screw | Front Side | 2-pole | Quick connect terminals 6.3 x 0.8 mm | 3 pos. | 4301.5247 |
| 6 | Medical Version (M5) | Screw | Rear Side | 2-pole | Quick connect terminals 6.3 x 0.8 mm | - | 4301.7207 |
| 10 | Medical Version (M5) | Screw | Front Side | 2-pole | Quick connect terminals 6.3 x 0.8 mm | - | 4301.5209 |
| 10 | Medical Version (M5) | Screw | Rear Side | 2-pole | Quick connect terminals 6.3 x 0.8 mm | - | 4301.7209 |
| 4 | Medical Version (M80) | Snap-in | Front Side | 2-pole | Quick connect terminals 6.3 x 0.8 mm | - | 4301.6206 |
| 1 | Medical Version (M80) | Screw | Rear Side | 2-pole | Quick connect terminals 6.3 x 0.8 mm | - | 4301.7202 |
| 2 | Medical Version (M80) | Screw | Front Side | 2-pole | Quick connect terminals 6.3 x 0.8 mm | - | 4301.5204 |
| 2 | Medical Version (M80) | Screw | Front Side | 2-pole | Quick connect terminals 6.3 x 0.8 mm | 3 pos. | 4301.5244 |
| 2 | Medical Version (M80) | Screw | Rear Side | 2-pole | Quick connect terminals 6.3 x 0.8 mm | - | 4301.7204 |
| 4 | Medical Version (M80) | Screw | Front Side | 2-pole | Quick connect terminals 6.3 x 0.8 mm | - | 4301.5206 |
| 4 | Medical Version (M80) | Screw | Rear Side | 2-pole | Quick connect terminals 6.3 x 0.8 mm | - | 4301.7206 |
| 6 | Medical Version (M80) | Screw | Rear Side | 2-pole | Quick connect terminals 6.3 x 0.8 mm | - | 4301.7208 |
| 10 | Medical Version (M80) | Screw | Front Side | 2-pole | Quick connect terminals 6.3 x 0.8 mm | - | 4301.5200 |
| 10 | Medical Version (M80) | Screw | Rear Side | 2-pole | Quick connect terminals 6.3 x 0.8 mm | - | 4301.7200 |
| 1 | Medical Version (M5) with Ground Line Choke | Screw | Front Side | 2-pole | Quick connect terminals 6.3 x 0.8 mm | - | 4301.8055 |
| 2 | Medical Version (M5) with Ground Line Choke | Screw | Front Side | 2-pole | Quick connect terminals 6.3 x 0.8 mm | - | 4301.8056 |
| 4 | Medical Version (M5) with Ground Line Choke | Screw | Front Side | 2-pole | Quick connect terminals 6.3 x 0.8 mm | - | 4301.8057 |
| 6 | Medical Version (M5) with Ground Line Choke | Screw | Front Side | 2-pole | Quick connect terminals 6.3 x 0.8 mm | - | 4301.8058 |

| Rated Current [A] | Filter-Type | Panel mounting | Mounting side | Fuseholder | Terminal | Voltage Selector | Order Number |
|-------------------|---|----------------|---------------|------------|--------------------------------------|------------------|--------------|
| 10 | Medical Version (M5) with Ground Line Choke | Screw | Front Side | 2-pole | Quick connect terminals 6.3 x 0.8 mm | - | 4301.8059 |

Most Popular.

Availability for all products can be searched real-time: <https://www.schurter.com/en/Stock-Check/Stock-Check-SCHURTER>

Wire length: 150 mm

Packaging unit 10 Pcs

Required Accessory

Description

Fusedrawer 2

Fusedrawer für Fuse Links 5x20 mm, with or without Voltage Selector Insert



| | |
|---|--------------|
| Fingergrip, 2-pole, Voltage Selector, 110, 150, 220 | 4301.1014.01 |
| Fingergrip, 2-pole, Voltage Selector, 120, 240 | 4301.1014.02 |
| Fingergrip, 2-pole, Voltage Selector, 110, 220 | 4301.1014.03 |
| Fingergrip, 2-pole, Voltage Selector, 115, 220 | 4301.1014.04 |

...

Accessories



Wire Harness

Wire harness for SCHURTER products



Assorted Covers

Rear Cover

0859.0072



Cord retaining kits

Cord retaining strain relief

| | |
|----------------|-----------|
| Flat head, A | 4700.0001 |
| Countersunk, B | 4700.0002 |

Mating Outlets/Connectors

Category / Description

Appliance Outlet Overview complete



| | |
|---|------|
| IEC Appliance Outlet F, Screw-on Mounting, Front Side, Solder Terminal | 4787 |
| IEC Appliance Outlet F, Snap-in Mounting, Front Side, Solder or Quick-connect Terminal | 4788 |
| IEC Appliance Outlet F or H, Screw-on Mounting, Front Side, Solder, PCB or Quick-connect Terminal | 5091 |

[Appliance Outlet further types to KFA](#)

Connector Overview complete



| | |
|--|---------|
| 4782 Mounting: Power Cord, 3 x 1 mm ² / 3 x 18 AWG, Cable, Connector: IEC C13 | 4782 |
| 4022 Mounting: Power Supply Cord, 3 x 1.5 mm ² , Screw clamps, Connector: IEC C13 | 4022 |
| 4785 Mounting: Power Cord, 3 x 1 mm ² / 3 x 18 AWG, Cable, Connector: IEC C13 | 4785 |
| 4300-06 Mounting: Power Cord, 3 x 1 mm ² / 3 x 18 AWG, Cable, Connector: IEC C13 | 4300-06 |
| 4012 Mounting: Power Supply Cord, 3 x 1.5 mm ² , Screw clamps, Connector: IEC C13 | 4012 |

[Connector further types to KFA](#)

...

Mating Outlets/Connectors shuttered



Power Cord Overview complete

| | |
|---|---------|
| VAC13KS, Overview, diverse Connector IEC C13, cord end: | VAC13KS |
|---|---------|

[Power Cord further types to KFA](#)