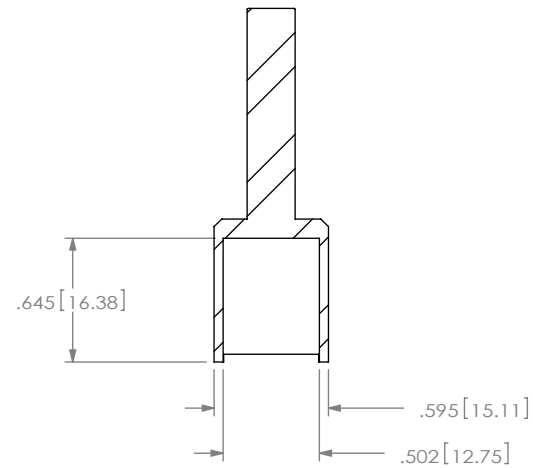
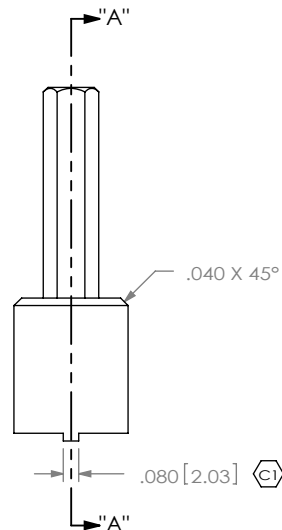
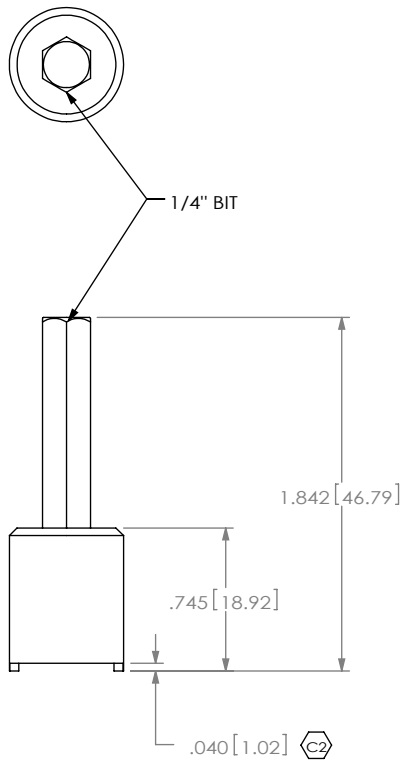


# REVISION

A	BC	D PARMAR
10/8/2009	ECN-118064	
RELEASE FOR PRODUCTION		
B	TZ	D PARMAR
12/7/2009	ECN-121352	
DRAWING NUMBER: CHG "CAT-HT-BNC7T-01" TO "TOOL-BNC7T-01"; DEL NOTE 3.		



SECTION "A"- "A"

**B**

NOTES:

1. REPRESENTS A CRITICAL DIMENSION.
2. BREAK ALL SHARP EDGES UNLESS OTHERWISE SPECIFIED.

UNLESS OTHERWISE SPECIFIED, DIMENSIONS ARE IN INCHES.  
 TOLERANCES ARE:  
 DECIMALS ANGLES  
 .XX: ±.01 [.3] 2°  
 .XXX: ±.005 [.13]  
 .XXXX: ±.0020 [.051]

PROPRIETARY NOTE

THIS DOCUMENT CONTAINS INFORMATION CONFIDENTIAL AND PROPRIETARY TO SAMTEC, INC. AND SHALL NOT BE REPRODUCED OR TRANSFERRED TO OTHER DOCUMENTS OR DISCLOSED TO OTHERS OR USED FOR ANY PURPOSE OTHER THAN THAT WHICH IT WAS OBTAINED WITHOUT THE EXPRESSED WRITTEN CONSENT OF SAMTEC, INC.



520 PARK EAST BLVD, NEW ALBANY, IN 47150  
 PHONE: 812-944-6733 FAX: 812-948-5047  
 e-Mail: info@SAMTEC.com code 55322

MATERIAL: DO NOT SCALE DRAWING SHEET SCALE: 1:1  
 4140 28-32 HRC

DESCRIPTION:  
 BNC7T KNURLED NUT TOOL

DWG. NO. **TOOL-BNC7T-01** **B**

BY: B. COOPER 10/8/2009 SHEET 1 OF 1