

General-Purpose CMOS Analog Switches

IH5040-IH5045/IH5047

General Description

The IH5040 family consists of seven CMOS analog switches that are intended for general-purpose applications. These switches are latch-up proof, break-before-make single, dual, and quad versions of the popular switch formats SPST, SPDT, DPST, and 4PST. Key features of the family include a low, 1nA leakage current and a quiescent current of less than 1µA.

Maxim's IH5040 family has faster switching times than the original manufacturer's devices. All devices are bidirectional and maintain almost constant on resistance throughout their operating range. These switches are guaranteed to operate from ±4.5V to ±18V, and will switch input signals that include the supplies.

Applications

- PBX, PABX
- Guidance and Control Systems
- Test Equipment
- Sample-and-Holds
- Military Radios

Features

- ◆ Improved Second Source
- ◆ Guaranteed ±4.5V to ±18V Operation
- ◆ Input Voltage Range Includes Supplies
- ◆ Latchup-Proof Construction
- ◆ TTL/CMOS Logic Compatible
- ◆ >1µA Quiescent Current
- ◆ Monolithic, Low-Power CMOS Design

Ordering Information

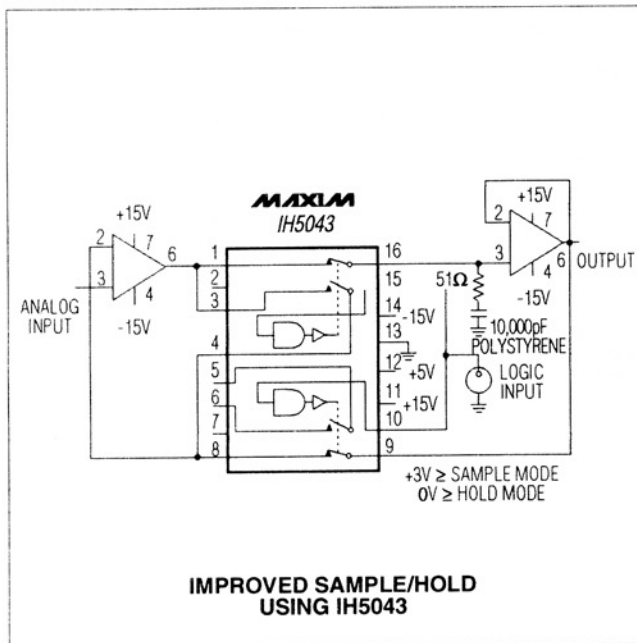
PART	TEMP. RANGE	PIN-PACKAGE
SINGLE POLE, SINGLE THROW (SPST)		
IH5040CPE	0°C to +70°C	16 Plastic DIP
IH5040CWE	0°C to +70°C	16 Wide SO
IH5040 CJE	0°C to +70°C	16 CERDIP
IH5040C/D	0°C to +70°C	Dice*
IH5040MJE	-55°C to +125°C	16 CERDIP**

Ordering Information continued at end of data sheet.

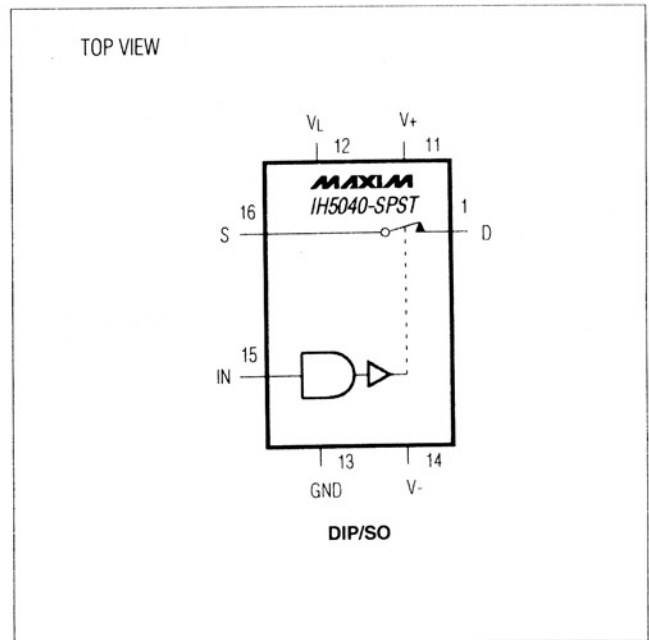
* Contact factory for dice specifications.

** Contact factory for availability and processing to MIL-STD-883.

Typical Operating Circuit



Pin Configurations & Switching-State Diagrams



General-Purpose CMOS Analog Switches

ABSOLUTE MAXIMUM RATINGS

V+ to V-	44V	Continuous Power Dissipation (T _A = +70°C)	
V+ to V _D	30V	Plastic DIP (derate 10.53mW/°C above +70°C)	842mW
V _D to V-	30V	Wide SO (derate 9.52mW/°C above +70°C)	762mW
V _D to V _S	±22V	CERDIP (derate 10.00mW/°C above +70°C)	800mW
V _L to V-	33V	TO-100 (derate 6.67mW/°C above +70°C)	533mW
V _L to V _{IN}	30V	Operating Temperature Ranges:	
V _L to GND	20V	IH504_C_	0°C to +70°C
V _{IN} to GND	20V	IH504_M_	-55°C to +125°C
Digital Inputs	(V+ + 0.3V) to (V+ - 44V)	Storage Temperature Range	-65°C to +150°C
V _S or V _D (Note 1)	-0.3V to (V+ + 0.3V)	Lead Temperature (soldering, 10sec)	+300°C
Current (any terminal)	30mA		

Note 1: Signals on S, D, and digital inputs that exceed V- or V+ will be clamped by internal diodes. Limit forward diode current to 30mA maximum.

Stresses beyond those listed under "Absolute Maximum Ratings" may cause permanent damage to the device. These are stress ratings only, and functional operation of the device at these or any other conditions beyond those indicated in the operational sections of the specifications is not implied. Exposure to absolute maximum rating conditions for extended periods may affect device reliability.

ELECTRICAL CHARACTERISTICS

(V+ = 15V, V- = -15V, V_L = 5V, T_A = +25°C, unless otherwise noted.)

PARAMETER	SYMBOL	CONDITIONS	IH504_M			IH504_C			UNITS	
			MIN	TYP	MAX	MIN	TYP	MAX		
Input Logic Current	I _{IN(ON)}	V _{IN} = 2.4V	T _A = +25°C	-1		1	-1		1	μA
			T _A = T _{MAX}	-10		10	-10		10	
	I _{IN(OFF)}	V _{IN} = 0.8V	T _A = +25°C	-1		1	-1		1	
			T _A = T _{MAX}	-10		10	-10		10	
Input Logic Low	V _{IL}	T _A = T _{MIN} to T _{MAX}			0.8			0.8	V	
Input Logic High	V _{IH}	T _A = T _{MIN} to T _{MAX}	2.4			2.4			V	
Drain-Source On Resistance	r _{DS(ON)}	I _S = 10mA, V _{ANALOG} = -10V to 10V	T _A = +25°C			75			80	Ω
			T _A = T _{MAX}			150			130	
Channel-to-Channel r _{DS(ON)} Match	Δr _{DS(ON)}			3			5		Ω	
Minimum Analog-Signal Handling Capability	V _{ANALOG}		-15		15	-15		15	V	
Switch-Off Leakage Current	I _D /I _{S(OFF)}	V _{ANALOG} = -10V to 10V	T _A = +25°C	-1		1	-5		5	nA
			T _A = T _{MAX}	-100		100	-100		100	

General-Purpose CMOS Analog Switches

ELECTRICAL CHARACTERISTICS (continued)

(V+ = 15V, V- = -15V, VL = 5V, TA = +25°C, unless otherwise noted.)

PARAMETER	SYMBOL	CONDITIONS	IH504_M			IH504_C			UNITS
			MIN	TYP	MAX	MIN	TYP	MAX	
Switch-On Leakage Current	ID(ON)	VD = VS = -10V to 10V	TA = +25°C	-2	2	-10	10	nA	
			TA = TMAX	-200	200	-100	100		
Switch-On Time	tON	Figure 1		400		400	ns		
Switch-Off Time	tOFF	Figure 1		200		200	ns		
Charge Injection	Q(INJ)	Figure 2 (Note 2)		15		20	mV		
Minimum Off-Isolation Rejection Ratio	OIRR	Figure 3, CL < 5pF		54		50	dB		
V+ Quiescent Current	I+Q	VIN = 0V and 5V	TA = +25°C		1		10	μA	
			TA = TMAX		10		100		
V- Quiescent Current	I-Q	VIN = 0V and 5V	TA = +25°C	-1		-10	μA		
			TA = TMAX	-10		-100			
VL Quiescent Current	ILQ	VIN = 0V and 5V	TA = +25°C		1		10	μA	
			TA = TMAX		10		100		
Ground Quiescent Current	IGND	VIN = 0V and 5V	TA = +25°C	-1		-10	μA		
			TA = TMAX	-10		-100			
Minimum Channel-to-Channel Cross-Coupling Rejection Ratio	CCRR	One channel off (Note 2)		54		50	dB		
Power-Supply Range for Continuous Operation	VOP	(Notes 2, 3)	±4.5		±18	±4.5	±18	V	

Note 2: Not production tested.

Note 3: Electrical characteristics, such as on resistance, will change when power supplies other than ±15V are used.

Test Circuits

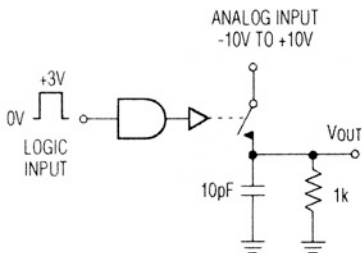


Figure 1. Switching Time

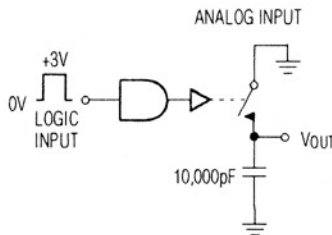


Figure 2. Charge Injection

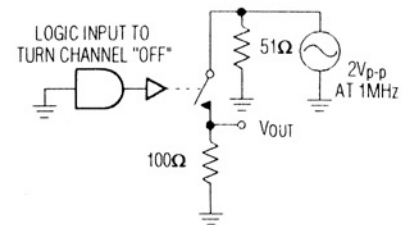


Figure 3. Off-Isolation Rejection Ratio

General-Purpose CMOS Analog Switches

Pin Configurations & Switching-State Diagrams (continued)

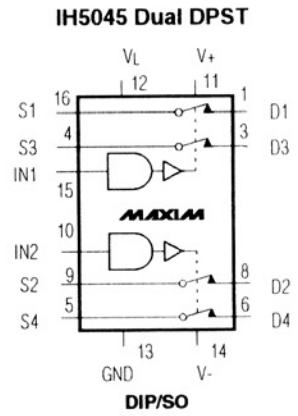
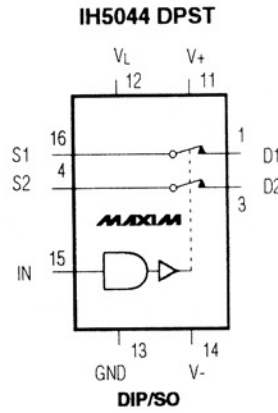
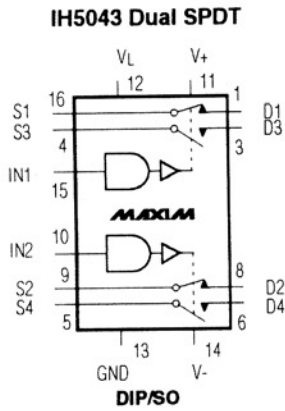
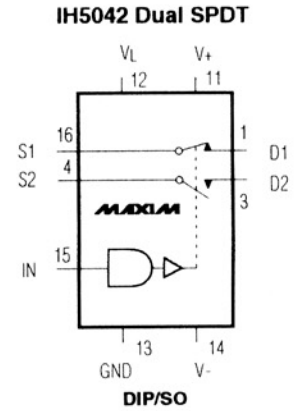
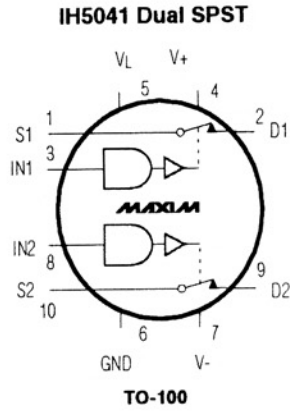
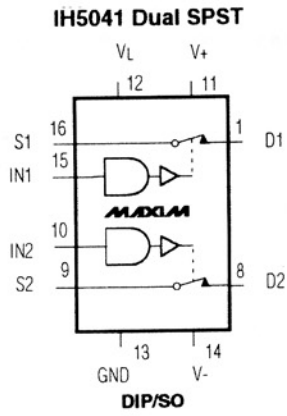
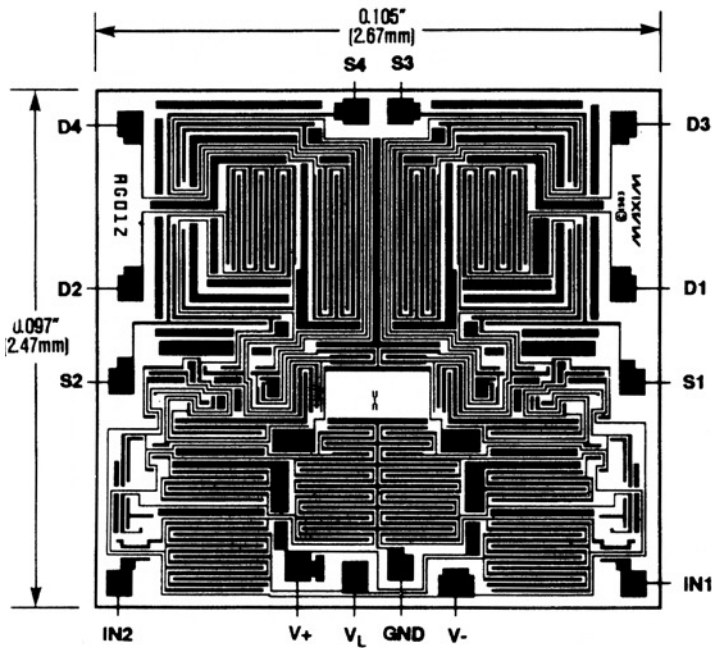


Table 1. Using the IH5040 Family with Only Two Supplies

SUPPLY VOLTAGES (V)	MINIMUM LOGIC I/P FOR "1" STATE (V)
±15	12.6
±12	9.6
±10	7.6
±5	2.6

General-Purpose CMOS Analog Switches

Chip Topography



Ordering Information (continued)

PART	TEMP. RANGE	PIN-PACKAGE
DUAL, SINGLE POLE, SINGLE THROW (DUAL SPST)		
IH5041CPE	0°C to +70°C	16 Plastic DIP
IH5041CWE	0°C to +70°C	16 Wide SO
IH5041CJE	0°C to +70°C	16 Cerdip
IH5041CTW	0°C to +70°C	16 TO-100†
IH5041C/D	0°C to +70°C	Dice*
IH5041MJE	-55°C to +125°C	16 Cerdip**
IH5041MTW	-55°C to +125°C	16 TO-100†
SINGLE POLE, DOUBLE THROW (SPDT)		
IH5042CPE	0°C to +70°C	16 Plastic DIP
IH5042CWE	0°C to +70°C	16 Wide SO
IH5042CJE	0°C to +70°C	16 Cerdip
IH5042C/D	0°C to +70°C	Dice*
IH5042MJE	-55°C to +125°C	16 Cerdip**
DUAL, SINGLE POLE, DOUBLE THROW (DUAL SPDT)		
IH5043CPE	0°C to +70°C	16 Plastic DIP
IH5043CWE	0°C to +70°C	16 Wide SO
IH5043CJE	0°C to +70°C	16 Cerdip
IH5043C/D	0°C to +70°C	Dice*
IH5043MJE	-55°C to +125°C	16 Cerdip**
DOUBLE POLE, SINGLE THROW (DPST)		
IH5044CPE	0°C to +70°C	16 Plastic DIP
IH5044CWE	0°C to +70°C	16 Wide SO
IH5044CJE	0°C to +70°C	16 Cerdip
IH5044C/D	0°C to +70°C	Dice*
IH5044MJE	-55°C to +125°C	16 Cerdip**
DUAL, DOUBLE POLE, SINGLE THROW (DUAL DPST)		
IH5045CPE	0°C to +70°C	16 Plastic DIP
IH5045CWE	0°C to +70°C	16 Wide SO
IH5045CJE	0°C to +70°C	16 Cerdip
IH5045C/D	0°C to +70°C	Dice*
IH5045MJE	-55°C to +125°C	16 Cerdip**
QUAD POLE, SINGLE THROW (4PST)		
IH5047CPE	0°C to +70°C	16 Plastic DIP
IH5047CWE	0°C to +70°C	16 Wide SO
IH5047CJE	0°C to +70°C	16 Cerdip
IH5047C/D	0°C to +70°C	Dice*
IH5047MJE	-55°C to +125°C	16 Cerdip**

* Contact factory for dice specifications.

** Contact factory for availability and processing to MIL-STD-883.

† Contact factory for availability.

General-Purpose CMOS Analog Switches

Package Information

(The package drawing(s) in this data sheet may not reflect the most current specifications. For the latest package outline information go to www.maxim-ic.com/packages.)

**Plastic DIP
PLASTIC
DUAL-IN-LINE
PACKAGE
(0.300 in.)**

DIM	INCHES		MILLIMETERS	
	MIN	MAX	MIN	MAX
A	—	0.200	—	5.08
A1	0.015	—	0.38	—
A2	0.125	0.175	3.18	4.45
A3	0.055	0.080	1.40	2.03
B	0.016	0.022	0.41	0.56
B1	0.045	0.065	1.14	1.65
C	0.008	0.012	0.20	0.30
D1	0.005	0.080	0.13	2.03
E	0.300	0.325	7.62	8.26
E1	0.240	0.310	6.10	7.87
e	0.100	—	2.54	—
eA	0.300	—	7.62	—
eB	—	0.400	—	10.16
L	0.115	0.150	2.92	3.81

PKG.	DIM	PINS	INCHES		MILLIMETERS	
			MIN	MAX	MIN	MAX
P	D	8	0.348	0.390	8.84	9.91
P	D	14	0.735	0.765	18.67	19.43
P	D	16	0.745	0.765	18.92	19.43
P	D	18	0.885	0.915	22.48	23.24
P	D	20	1.015	1.045	25.78	26.54
N	D	24	1.14	1.265	28.96	32.13

21-0043A

**Wide SO
SMALL-OUTLINE
PACKAGE
(0.300 in.)**

DIM	INCHES		MILLIMETERS	
	MIN	MAX	MIN	MAX
A	0.093	0.104	2.35	2.65
A1	0.004	0.012	0.10	0.30
B	0.014	0.019	0.35	0.49
C	0.009	0.013	0.23	0.32
E	0.291	0.299	7.40	7.60
e	0.050		1.27	
H	0.394	0.419	10.00	10.65
L	0.016	0.050	0.40	1.27

DIM	PINS	INCHES		MILLIMETERS	
		MIN	MAX	MIN	MAX
D	16	0.398	0.413	10.10	10.50
D	18	0.447	0.463	11.35	11.75
D	20	0.496	0.512	12.60	13.00
D	24	0.598	0.614	15.20	15.60
D	28	0.697	0.713	17.70	18.10

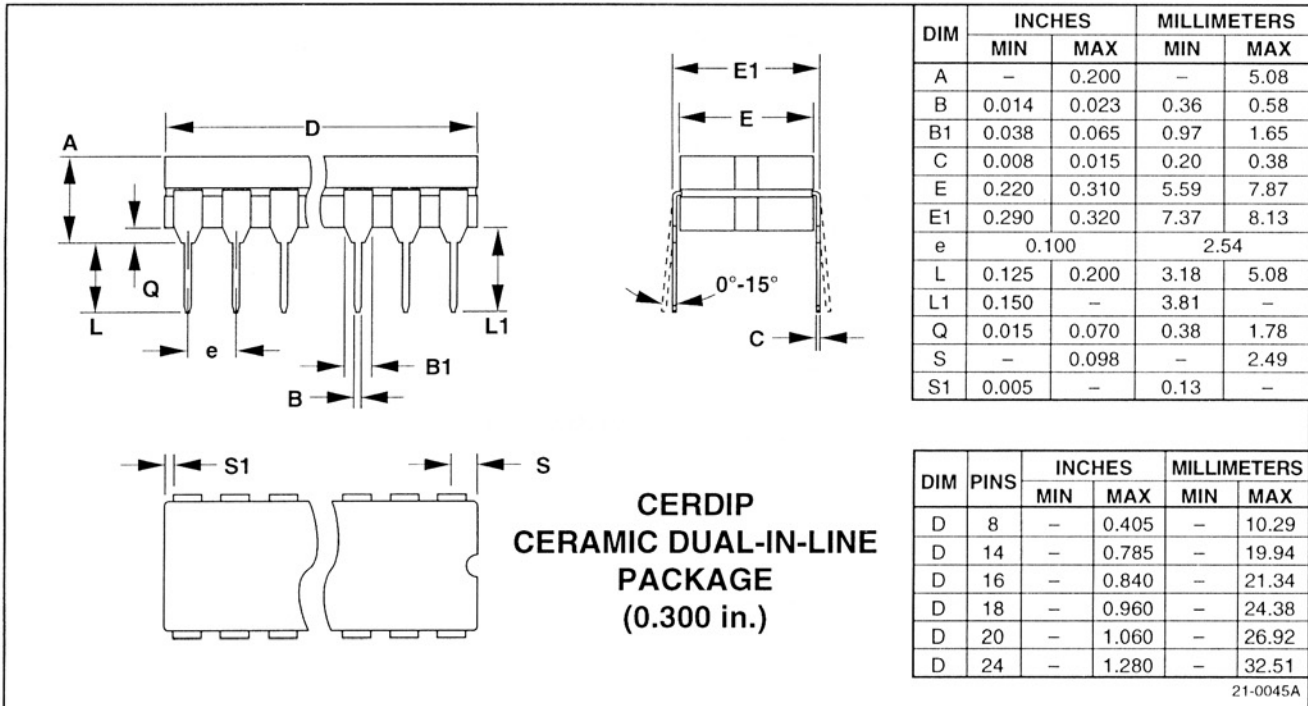
21-0042A

General-Purpose CMOS Analog Switches

Package Information (continued)

(The package drawing(s) in this data sheet may not reflect the most current specifications. For the latest package outline information go to www.maxim-ic.com/packages.)

IH5040-IH5045/IH5047



General-Purpose CMOS Analog Switches

IH5040-IH5045/IH5047

Maxim cannot assume responsibility for use of any circuitry other than circuitry entirely embodied in a Maxim product. No circuit patent licenses are implied. Maxim reserves the right to change the circuitry and specifications without notice at any time.

8 _____ **Maxim Integrated Products, 120 San Gabriel Drive, Sunnyvale, CA 94086 (408) 737-7600**

SITE
SEARCHPART NO.
SEARCH

WHAT'S NEW

PRODUCTS

SOLUTIONS

DESIGN

APPNOTES

SUPPORT

BUY

COMPANY

MEMBERS

Maxim > Products > Analog Switches and Multiplexers

IH5040, IH5041, IH5042, IH5043, IH5044, IH5045, IH5047

SPST, Normally Open, CMOS Analog Switch

QuickView

Technical Documents

Ordering Info

More Information

All

Ordering Information

Notes:

1. Other options and links for purchasing parts are listed at: <http://www.maxim-ic.com/sales>.
2. [Didn't Find What You Need?](#) Ask our applications engineers. Expert assistance in finding parts, usually within one business day.
3. Part number suffixes: T or T&R = tape and reel; + = RoHS/lead-free; # = RoHS/lead-exempt. More: See [Full Data Sheet](#) or [Part Naming Conventions](#).
4. * Some packages have variations, listed on the drawing. "PkgCode/Variation" tells which variation the product uses.

Devices: 1-69 of 69

IH5040	Free Sample	Buy	Package: TYPE PINS FOOTPRINT DRAWING CODE/VAR *	Temp	RoHS/Lead-Free? Materials Analysis
IH5040C/D					RoHS/Lead-Free: See data sheet
IH5040CJE			Ceramic DIP;16 pin;173 mm Dwg: 21-0045A (PDF) Use pkgcode/variation: J16-3*	0C to +70C	RoHS/Lead-Free: No Materials Analysis
IH5040IJE			Ceramic DIP;16 pin;173 mm Dwg: 21-0045A (PDF) Use pkgcode/variation: J16-3*	-20C to +85C	RoHS/Lead-Free: No Materials Analysis
IH5040MJE			Ceramic DIP;16 pin;173 mm Dwg: 21-0045A (PDF) Use pkgcode/variation: J16-3*	-55C to +125C	RoHS/Lead-Free: No Materials Analysis
IH5040MJE/883B			Ceramic DIP;16 pin;173 mm Dwg: 21-0045A (PDF) Use pkgcode/variation: J16-3*	-55C to +125C	RoHS/Lead-Free: No Materials Analysis
IH5040CPE+			PDIP;16 pin;160 mm Dwg: 21-0043D (PDF) Use pkgcode/variation: P16+1*	0C to +70C	RoHS/Lead-Free: Lead Free Materials Analysis
IH5040CPE			PDIP;16 pin;160 mm Dwg: 21-0043D (PDF) Use pkgcode/variation: P16-1*	0C to +70C	RoHS/Lead-Free: No Materials Analysis
IH5040CWE			SOIC;16 pin;112 mm Dwg: 21-0042B (PDF) Use pkgcode/variation: W16-1*	0C to +70C	RoHS/Lead-Free: No Materials Analysis
IH5040CWE-T			SOIC;16 pin;112 mm Dwg: 21-0042B (PDF) Use pkgcode/variation: W16-1*	0C to +70C	RoHS/Lead-Free: No Materials Analysis
IH5040CWE+T			SOIC;16 pin;112 mm Dwg: 21-0042B (PDF) Use pkgcode/variation: W16+1*	0C to +70C	RoHS/Lead-Free: Lead Free Materials Analysis
IH5040CWE+			SOIC;16 pin;112 mm Dwg: 21-0042B (PDF) Use pkgcode/variation: W16+1*	0C to +70C	RoHS/Lead-Free: Lead Free Materials Analysis
IH5041	Free Sample	Buy	Package: TYPE PINS FOOTPRINT DRAWING CODE/VAR *	Temp	RoHS/Lead-Free? Materials Analysis

IH5041C/D					RoHS/Lead-Free: See data sheet
IH5041CTW				0C to +70C	RoHS/Lead-Free: See data sheet
IH5041ITW				-20C to +85C	RoHS/Lead-Free: See data sheet
IH5041MTW				-55C to +125C	RoHS/Lead-Free: See data sheet
IH5041CJE			Ceramic DIP;16 pin;173 mm Dwg: 21-0045A (PDF) Use pkgcode/variation: J16-3*	0C to +70C	RoHS/Lead-Free: No Materials Analysis
IH5041IJE			Ceramic DIP;16 pin;173 mm Dwg: 21-0045A (PDF) Use pkgcode/variation: J16-3*	-20C to +85C	RoHS/Lead-Free: No Materials Analysis
IH5041MJE/883B			Ceramic DIP;16 pin;173 mm Dwg: 21-0045A (PDF) Use pkgcode/variation: J16-3*	-55C to +125C	RoHS/Lead-Free: No Materials Analysis
IH5041MJE			Ceramic DIP;16 pin;173 mm Dwg: 21-0045A (PDF) Use pkgcode/variation: J16-3*	-55C to +125C	RoHS/Lead-Free: No Materials Analysis
IH5041CPE			PDIP;16 pin;160 mm Dwg: 21-0043D (PDF) Use pkgcode/variation: P16-1*	0C to +70C	RoHS/Lead-Free: No Materials Analysis
IH5041CPE+			PDIP;16 pin;160 mm Dwg: 21-0043D (PDF) Use pkgcode/variation: P16+1*	0C to +70C	RoHS/Lead-Free: Lead Free Materials Analysis
IH5041CWE-T			SOIC;16 pin;112 mm Dwg: 21-0042B (PDF) Use pkgcode/variation: W16-1*	0C to +70C	RoHS/Lead-Free: No Materials Analysis
IH5041CWE			SOIC;16 pin;112 mm Dwg: 21-0042B (PDF) Use pkgcode/variation: W16-1*	0C to +70C	RoHS/Lead-Free: No Materials Analysis
IH5042	Free Sample	Buy	Package: TYPE PINS FOOTPRINT DRAWING CODE/VAR *	Temp	RoHS/Lead-Free? Materials Analysis
IH5042IJE					RoHS/Lead-Free: See data sheet
IH5042CJE			Ceramic DIP;16 pin;173 mm Dwg: 21-0045A (PDF) Use pkgcode/variation: J16-3*	0C to +70C	RoHS/Lead-Free: No Materials Analysis
IH5042MJE/883B			Ceramic DIP;16 pin;173 mm Dwg: 21-0045A (PDF) Use pkgcode/variation: J16-3*	-55C to +125C	RoHS/Lead-Free: No Materials Analysis
IH5042MJE			Ceramic DIP;16 pin;173 mm Dwg: 21-0045A (PDF) Use pkgcode/variation: J16-3*	-55C to +125C	RoHS/Lead-Free: No Materials Analysis
IH5042C/D					RoHS/Lead-Free: See data sheet
IH5042CPE+			PDIP;16 pin;160 mm Dwg: 21-0043D (PDF) Use pkgcode/variation: P16+1*	0C to +70C	RoHS/Lead-Free: Lead Free Materials Analysis
IH5042CPE			PDIP;16 pin;160 mm Dwg: 21-0043D (PDF) Use pkgcode/variation: P16-1*	0C to +70C	RoHS/Lead-Free: No Materials Analysis
IH5042CWE+			SOIC;16 pin;112 mm Dwg: 21-0042B (PDF) Use pkgcode/variation: W16+1*	0C to +70C	RoHS/Lead-Free: Lead Free Materials Analysis
IH5042CWE+T			SOIC;16 pin;112 mm Dwg: 21-0042B (PDF) Use pkgcode/variation: W16+1*	0C to +70C	RoHS/Lead-Free: Lead Free Materials Analysis
IH5042CWE-T			SOIC;16 pin;112 mm Dwg: 21-0042B (PDF) Use pkgcode/variation: W16-1*	0C to +70C	RoHS/Lead-Free: No Materials Analysis

IH5042CWE			SOIC;16 pin;112 mm Dwg: 21-0042B (PDF) Use pkgcode/variation: W16-1*	0C to +70C	RoHS/Lead-Free: No Materials Analysis
IH5043	Free Sample	Buy	Package: TYPE PINS FOOTPRINT DRAWING CODE/VAR *	Temp	RoHS/Lead-Free? Materials Analysis
IH5043CJE			Ceramic DIP;16 pin;173 mm Dwg: 21-0045A (PDF) Use pkgcode/variation: J16-3*	0C to +70C	RoHS/Lead-Free: No Materials Analysis
IH5043IJE			Ceramic DIP;16 pin;173 mm Dwg: 21-0045A (PDF) Use pkgcode/variation: J16-3*	-20C to +85C	RoHS/Lead-Free: No Materials Analysis
IH5043MJE			Ceramic DIP;16 pin;173 mm Dwg: 21-0045A (PDF) Use pkgcode/variation: J16-3*	-55C to +125C	RoHS/Lead-Free: No Materials Analysis
IH5043MJE/883B			Ceramic DIP;16 pin;173 mm Dwg: 21-0045A (PDF) Use pkgcode/variation: J16-3*	-55C to +125C	RoHS/Lead-Free: No Materials Analysis
IH5043MJE/HR			Ceramic DIP;16 pin;173 mm Dwg: 21-0045A (PDF) Use pkgcode/variation: J16-3*	-55C to +125C	RoHS/Lead-Free: No Materials Analysis
IH5043C/D					RoHS/Lead-Free: See data sheet
IH5043CPE			PDIP;16 pin;160 mm Dwg: 21-0043D (PDF) Use pkgcode/variation: P16-1*	0C to +70C	RoHS/Lead-Free: No Materials Analysis
IH5043CPE+			PDIP;16 pin;160 mm Dwg: 21-0043D (PDF) Use pkgcode/variation: P16+1*	0C to +70C	RoHS/Lead-Free: Lead Free Materials Analysis
IH5043CWE+T			SOIC;16 pin;112 mm Dwg: 21-0042B (PDF) Use pkgcode/variation: W16+1*	0C to +70C	RoHS/Lead-Free: Lead Free Materials Analysis
IH5043CWE+			SOIC;16 pin;112 mm Dwg: 21-0042B (PDF) Use pkgcode/variation: W16+1*	0C to +70C	RoHS/Lead-Free: Lead Free Materials Analysis
IH5043CWE			SOIC;16 pin;112 mm Dwg: 21-0042B (PDF) Use pkgcode/variation: W16-1*	0C to +70C	RoHS/Lead-Free: No Materials Analysis
IH5043CWE-T			SOIC;16 pin;112 mm Dwg: 21-0042B (PDF) Use pkgcode/variation: W16-1*	0C to +70C	RoHS/Lead-Free: No Materials Analysis
IH5044	Free Sample	Buy	Package: TYPE PINS FOOTPRINT DRAWING CODE/VAR *	Temp	RoHS/Lead-Free? Materials Analysis
IH5044C/D					RoHS/Lead-Free: See data sheet
IH5044CWE					RoHS/Lead-Free: See data sheet
IH5044CJE			Ceramic DIP;16 pin;173 mm Dwg: 21-0045A (PDF) Use pkgcode/variation: J16-3*	0C to +70C	RoHS/Lead-Free: No Materials Analysis
IH5044MJE			Ceramic DIP;16 pin;173 mm Dwg: 21-0045A (PDF) Use pkgcode/variation: J16-3*	-55C to +125C	RoHS/Lead-Free: No Materials Analysis
IH5044MJE/883B			Ceramic DIP;16 pin;173 mm Dwg: 21-0045A (PDF) Use pkgcode/variation: J16-3*	-55C to +125C	RoHS/Lead-Free: No Materials Analysis
IH5044CPE			PDIP;16 pin;160 mm Dwg: 21-0043D (PDF) Use pkgcode/variation: P16-1*	0C to +70C	RoHS/Lead-Free: No Materials Analysis
IH5045	Free Sample	Buy	Package: TYPE PINS FOOTPRINT DRAWING CODE/VAR *	Temp	RoHS/Lead-Free? Materials Analysis
IH5045MFD					RoHS/Lead-Free: See data sheet

IH5045C/D					RoHS/Lead-Free: See data sheet
IH5045CJE			Ceramic DIP;16 pin;173 mm Dwg: 21-0045A (PDF) Use pkgcode/variation: J16-3*	0C to +70C	RoHS/Lead-Free: No Materials Analysis
IH5045MJE			Ceramic DIP;16 pin;173 mm Dwg: 21-0045A (PDF) Use pkgcode/variation: J16-3*	-55C to +125C	RoHS/Lead-Free: No Materials Analysis
IH5045MJE/883B			Ceramic DIP;16 pin;173 mm Dwg: 21-0045A (PDF) Use pkgcode/variation: J16-3*	-55C to +125C	RoHS/Lead-Free: No Materials Analysis
IH5045CPE+			PDIP;16 pin;160 mm Dwg: 21-0043D (PDF) Use pkgcode/variation: P16+1*	0C to +70C	RoHS/Lead-Free: Lead Free Materials Analysis
IH5045CPE			PDIP;16 pin;160 mm Dwg: 21-0043D (PDF) Use pkgcode/variation: P16-1*	0C to +70C	RoHS/Lead-Free: No Materials Analysis
IH5045CWE			SOIC;16 pin;112 mm Dwg: 21-0042B (PDF) Use pkgcode/variation: W16-1*	0C to +70C	RoHS/Lead-Free: No Materials Analysis
IH5045CWE-T			SOIC;16 pin;112 mm Dwg: 21-0042B (PDF) Use pkgcode/variation: W16-1*	0C to +70C	RoHS/Lead-Free: No Materials Analysis
IH5047	Free Sample	Buy	Package: TYPE PINS FOOTPRINT DRAWING CODE/VAR *	Temp	RoHS/Lead-Free? Materials Analysis
IH5047MFD					RoHS/Lead-Free: See data sheet
IH5047CWE					RoHS/Lead-Free: See data sheet
IH5047MFD/883B				-55C to +125C	RoHS/Lead-Free: See data sheet
IH5047CJE			Ceramic DIP;16 pin;173 mm Dwg: 21-0045A (PDF) Use pkgcode/variation: J16-3*	0C to +70C	RoHS/Lead-Free: No Materials Analysis
IH5047MJE/883B			Ceramic DIP;16 pin;173 mm Dwg: 21-0045A (PDF) Use pkgcode/variation: J16-3*	-55C to +125C	RoHS/Lead-Free: No Materials Analysis
IH5047MJE			Ceramic DIP;16 pin;173 mm Dwg: 21-0045A (PDF) Use pkgcode/variation: J16-3*	-55C to +125C	RoHS/Lead-Free: No Materials Analysis
IH5047C/D					RoHS/Lead-Free: See data sheet
IH5047CPE			PDIP;16 pin;160 mm Dwg: 21-0043D (PDF) Use pkgcode/variation: P16-1*	0C to +70C	RoHS/Lead-Free: No Materials Analysis

Didn't Find What You Need?

- [Next Day Product Selection Assistance from Applications Engineers](#)
- [Parametric Search](#)
- [Applications Help](#)

QuickView

Description
Key Features
Applications/Uses
[Key Specifications](#)
Diagram

Technical Documents

[Data Sheet](#)
[Application Notes](#)
[Design Guides](#)
[Engineering Journals](#)
[Reliability Reports](#)
[Software/Models](#)
[Evaluation Kits](#)

Ordering Info

Price and Availability
Samples
Buy Online
Package Information
Lead-Free Information

More Information

[Related Products](#)
[Notes and Comments](#)
[Evaluation Kits](#)

[CONTACT US: SEND US AN EMAIL](#)

Copyright 2007 by Maxim Integrated Products, Dallas Semiconductor • [Legal Notices](#) • [Privacy Policy](#)