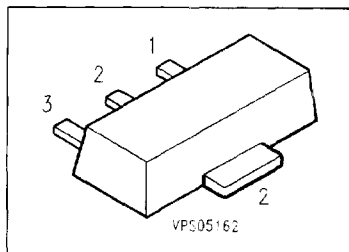


## Silicon Switching Diodes

**BAW 79 A**  
... **BAW 79 D**

- For high-speed switching
- High breakdown voltage
- Common cathode



Type	Marking	Ordering Code (tape and reel)	Pin Configuration	Package <sup>1)</sup>
BAW 79 A	GE	Q62702-A781		SOT-89
BAW 79 B	GF	Q62702-A782		
BAW 79 C	GG	Q62702-A771		
BAW 79 D	GH	Q62702-A733		

### Maximum Ratings per Diode

Parameter	Symbol	Values				Unit
		BAW 79 A	BAW 79 B	BAW 79 C	BAW 79 D	
Reverse voltage	$V_R$	50	100	200	400	V
Peak reverse voltage	$V_{RM}$	50	100	200	400	
Forward current	$I_F$	1				A
Peak forward current	$I_{FM}$	1				
Surge forward current $t = 1 \mu s$	$I_{FS}$	10				
Total power dissipation $T_s = 115 \text{ }^\circ\text{C}$	$P_{tot}$	1				W
Junction temperature	$T_j$	150				$^\circ\text{C}$
Storage temperature range	$T_{slg}$	- 65 ... + 150				

### Thermal Resistance

Junction - ambient <sup>2)</sup>	$R_{th JA}$	$\leq 175$	K/W
Junction - soldering point	$R_{th JS}$	$\leq 35$	

<sup>1)</sup> For detailed information see chapter Package Outlines.

<sup>2)</sup> Package mounted on epoxy pcb 40 mm x 40 mm x 1.5 mm/6 cm<sup>2</sup> Cu.

**Electrical Characteristics per Diode**  
at  $T_A = 25\text{ }^\circ\text{C}$ , unless otherwise specified.

Parameter	Symbol	Values			Unit
		min.	typ.	max.	

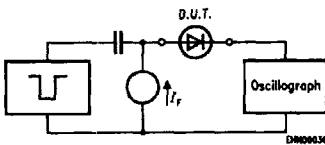
**DC characteristics**

Breakdown voltage $I_{(BR)} = 100\text{ }\mu\text{A}$	$V_{(BR)}$				V
BAW 79 A		50	—	—	
BAW 79 B		100	—	—	
BAW 79 C		200	—	—	
BAW 79 D		400	—	—	
Forward voltage <sup>1)</sup> $I_F = 1\text{ A}$ $I_F = 2\text{ A}$	$V_F$	—	—	1.6 2	V
Reverse current $V_R = V_{Rmax}$ $V_R = V_{Rmax}, T_A = 150\text{ }^\circ\text{C}$	$I_R$	—	—	1 50	$\mu\text{A}$

**AC characteristics**

Diode capacitance $V_R = 0\text{ V}, f = 1\text{ MHz}$	$C_b$	—	10	—	pF
Reverse recovery time $I_F = 200\text{ mA}, I_R = 200\text{ mA},$ $R_L = 100\text{ }\Omega$ measured at $I_R = 20\text{ mA}$	$t_{rr}$	—	1	—	$\mu\text{s}$

**Test circuit for reverse recovery time**

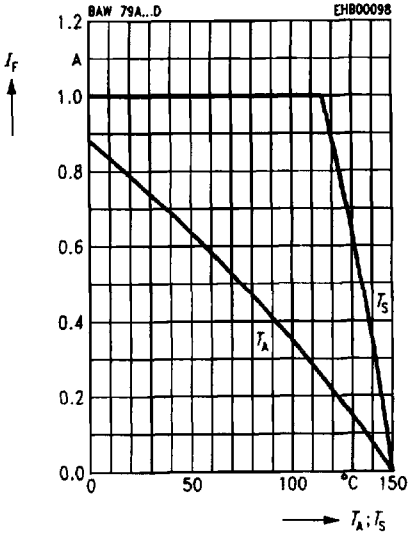


Pulse generator:  $t_p = 5\text{ }\mu\text{s}, D = 0.05$   
 $t_r = 0.6\text{ ns}, R_l = 50\text{ }\Omega$

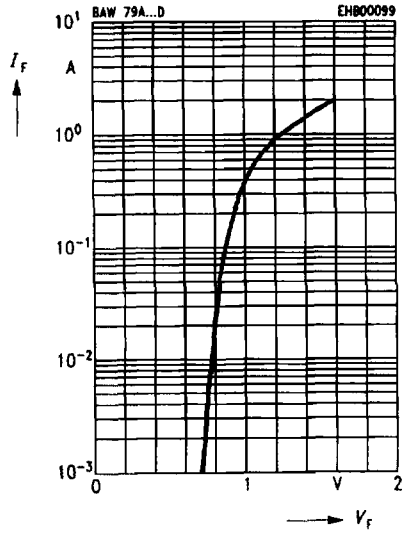
Oscilloscope:  $R = 50\text{ }\Omega$   
 $t_r = 0.35\text{ ns}$   
 $C \leq 1\text{ pF}$

<sup>1)</sup> Pulse test:  $t_p \leq 300\text{ }\mu\text{s}, D = 2\text{ }\%$ .

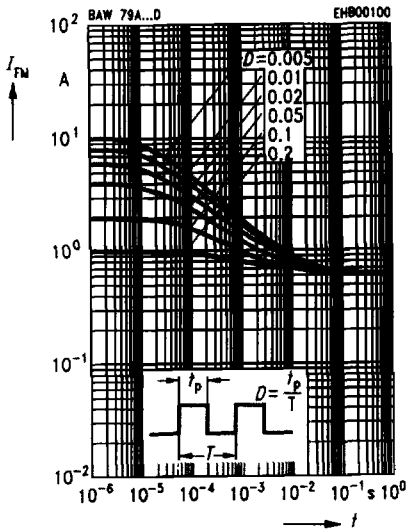
**Forward current  $I_F = f(T_A^*; T_S)$**   
\* Package mounted on epoxy



**Forward current  $I_F = f(V_F)$**   
 $T_A = 25^\circ\text{C}$



**Peak forward current  $I_{FM} = f(t)$**   
 $T_A = 25^\circ\text{C}$



**Reverse current  $I_R = f(T_A)$**   
 $V_R = V_{Rmax}$

