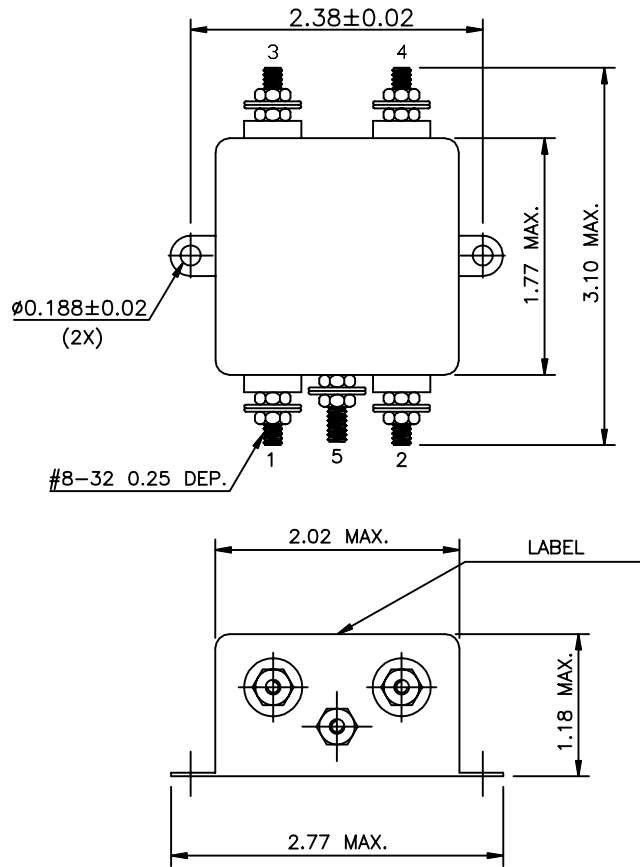
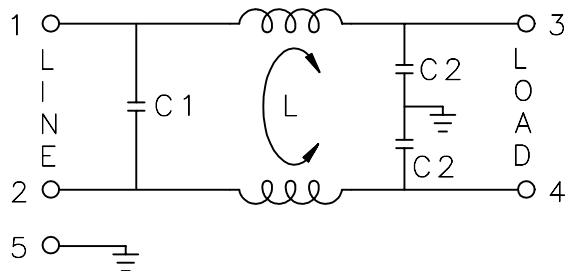


MECHANICAL DIMENSIONS :



ELECTRICAL SCHEMATIC :




L: 1.5mH
 C1: 0.1uF
 C2: 3300pF

		Revision	
Rev.	Description	Date	Approved

1. ELECTRICAL CHARACTERISTICS :

- 1-1. VOLTAGE RATING 115/250V
- 1-2. CURRENT RATING
 - A. AT 115VAC 10 A RMS MAX.
 - B. AT 250VAC..... 10 A RMS MAX.
- 1-3. OPERATING FREQUENCY..... 50-60Hz
- 1-4. LEAKAGE CURRENT: EACH LINE TO GROUND
 - A. AT 115VAC 60Hz..... 0.25 mA MAX.
 - B. AT 250VAC 50Hz..... 0.45 mA MAX.
- 1-5. HIPOT RATING (FOR ONE MINUTE)
 - A. LINE TO GROUND..... 2250 VDC
 - B. LINE TO LINE 1450 VDC
- 1-6. MINIMUM INSERTION LOSS IN dB

MHz	.01	.05	.10	.15	.50	1.0	5.0	10	30
COM. MODE	/	/	/	20	30	35	50	50	45
DIF. MODE	/	/	/	6	15	20	40	45	45
- 1-7. AMBIENT TEMPERATURE 40°C
- 1-8. OPERATING TEMPERATURE -25°C TO +85°C
- 1-9. SAFETY AGENCY APPROVED : 

Dim range (mm)	Tolerance +/- (mm)	Qualtek Electronics Corp. PPC DIVISION	
		Part Number: 851-10/009	
0-1	0.15	Description: EMI FILTER	
1-6	0.20	Unit: inch	
6-18	0.30	Drawn/Date B.ZHANG 07-09-03	Checked/Date 07-09-03
18-50	0.50		
50-120	0.70	Approved/Date JJH/07-09-03	
120-250	0.90		
250-500	1.20		