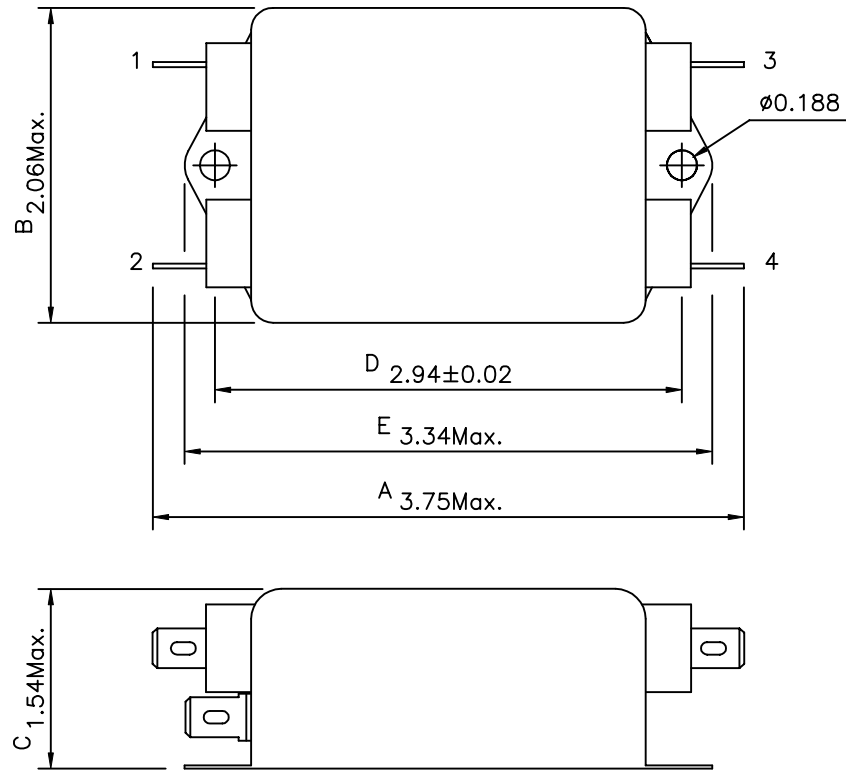


Revision			
Rev.	Description	Date	Approved

PHYSICAL DIMENSIONS:



1. ELECTRICAL CHARACTERISTICS:

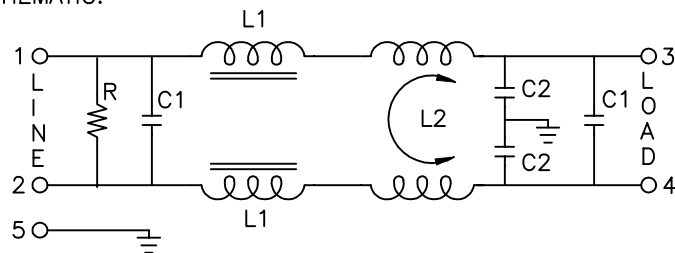
- 1-1. VOLTAGE RATING ..... 115/250VAC
- 1-2. CURRENT RATING
  - A. AT 115VAC ..... 6 A RMS Max.
  - B. AT 250VAC ..... 6 A RMS Max.
- 1-3. OPERATING FREQUENCY..... 50/60 Hz
- 1-4. LEAKAGE CURRENT: EACH LINE TO GROUND
  - A. @115VAC 60Hz ..... 0.45 mA Max.
  - B. @250VAC 50Hz ..... 0.90 mA Max.
- 1-5. HIPOT RATING (FOR ONE MINUTE)
  - A. LINE TO GROUND ..... 2250VDC
  - B. LINE TO LINE ..... 1450VDC
- 1-6. TEMPERATURE RANGE: -25 TO +85 DEGREE C
- 1-7. MINIMUM INSERTION LOSS IN dB: (AT 50 OHM SYSTEM)

FREQ. MHz	.01	.05	.10	.15	.50	1.0	5.0	10	30
COM. MODE dB	5	18	25	25	30	30	35	50	45
DIF. MODE dB	0	10	25	30	25	40	40	40	40

1-8. SAFETY



SCHEMATIC:



L1: 70.0uH  
 L2: 1.7mH  
 C1: 0.22uF  
 C2: 3300+2200pF  
 R: 330KΩ

Dim range (mm)	Tolerance +/- (mm)	Qualtek Electronics Corp. PPC DIVISION		
		Part Number: 848-06/002		
0-1	0.15	Description: EMI FILTER		
1-6	0.20	UNIT: INCH		
6-18	0.30			
18-50	0.50	Approved/Date		
50-120	0.70	Drawn/Date	Checked/Date	Approved/Date
120-250	0.90	B.ZHANG	02-07-03	JJH/02-07-03
250-500	1.20	02-07-03		