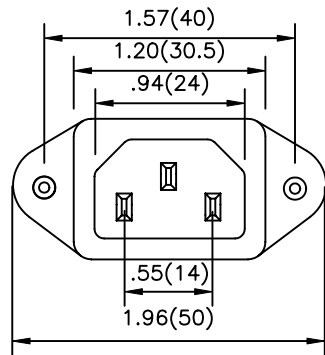
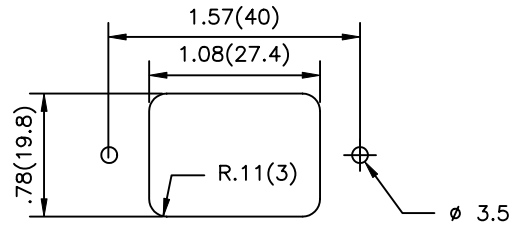


		Revision	
Rev.	Description	Date	Approved



Countersunk Ear



For Front Mounting Use  
Panel Cut-Out

Material:

Housing: Thermoplastic UL 94VO Flamability Rating

Terminal: Copper Alloy

Characteristics:

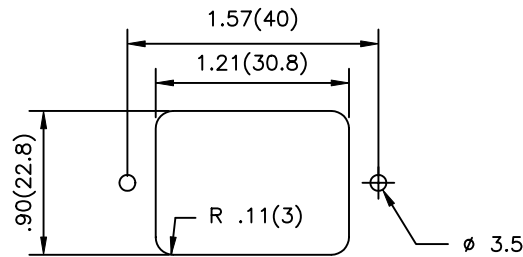
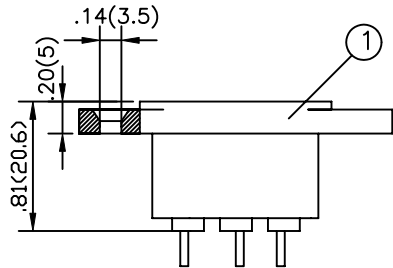
Rating: 10A 250V AC / 15A 250V AC

Insulation Resistance: Over 100M OHM 500V DC

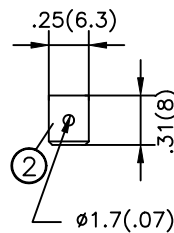
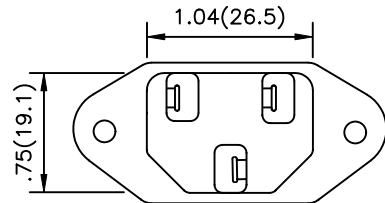
Dielectric Strength: 2000V AC One Minute

Approvals:

UL, CSA, VDE, SEV, CB, SEMKO, DEMKO, NEMKO, and SETI



For Rear Mounting Use  
Panel Cut-Out



TERMINAL

2	TERMINAL	1SET	6.3x0.8T	COPPER ALLOY TIN-PLATED
1	HOUSING	1	RIVET SCREW TYPE	THERMOPLASTIC
Dim range (mm)	Tolerance +/- (mm)	Qualtek Electronics Corp.		
		PPC DIVISION		
		Part Number: 703W-00/08		
0-1	0.15	Description: SCREW MOUNT INLET		
1-6	0.20			
6-18	0.30			
18-50	0.50			
50-120	0.70	Drawn/Date	Checked/Date	Approved/Date
120-250	0.90	B.ZHANG	05-02-02	JJH/05-02-02
250-500	1.20	05-02-02		