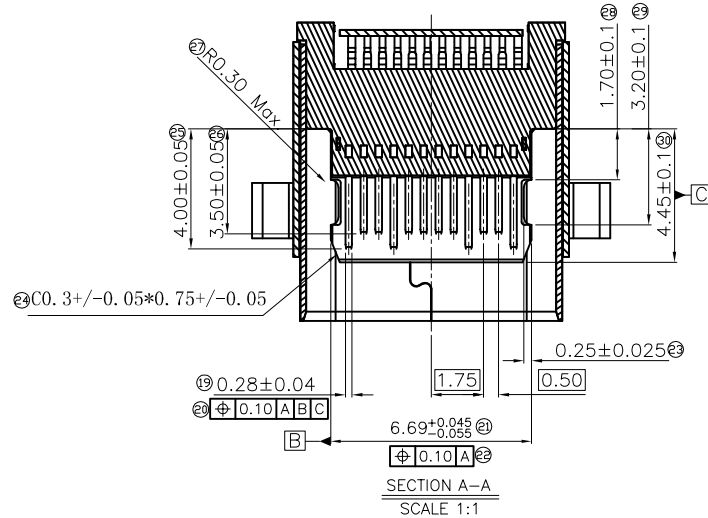
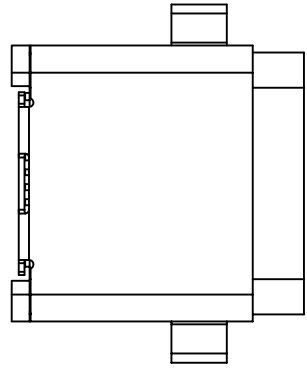


REVISION RECORD		
REV	DESCRIPTION	DRFT

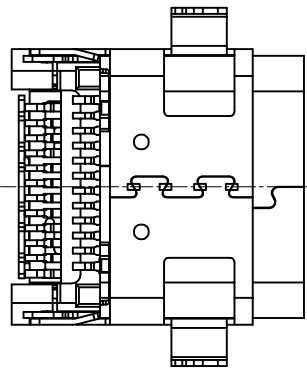
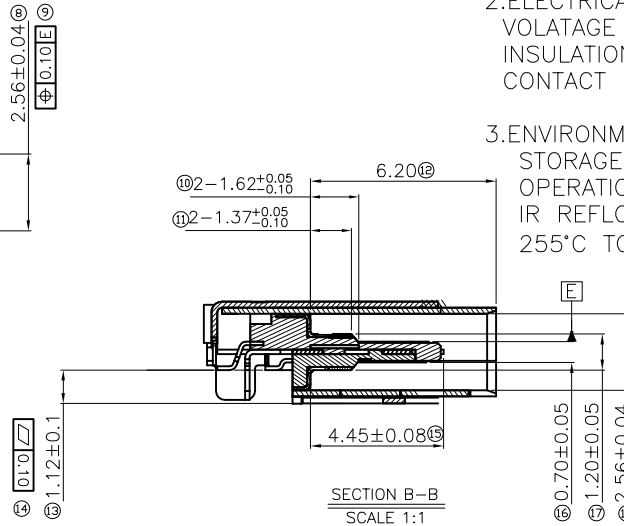
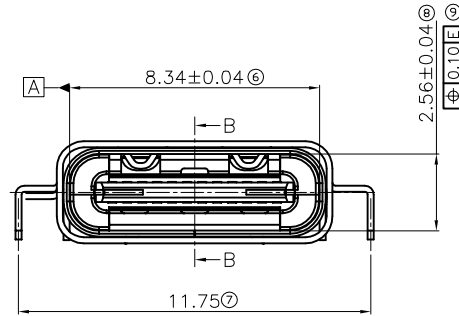
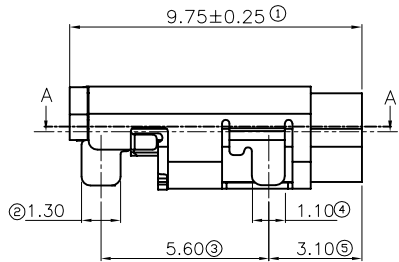


NOTES:

1. MECHANICAL:  
 HOUSING: HIGH TEMPERATURE THERMOPLASTIC, UL94V-0, COLOR: BLACK  
 CONTACT: COPPER ALLOY  
 30u" Au PLATING ON CONTACT AREA  
 GOLD FLASH PLATING ON SOLDER TAILS  
 80u" Min Ni UNDERPLATING OVER ALL SHIELD  
 SHIELD: STAINLESS STEEL  
 50u" Min Ni PLATING OVER ALL.  
 INSERT FORCE: 5-20N Max.  
 EXTRACT FORCE: 8-20N Min.  
 DURABILITY: 10000 CYCLES

2. ELECTRICAL:  
 VOLTAGE RATING: 100V AC  
 INSULATION RESISTANCE: 100MΩ  
 CONTACT RESISTANCE: 40mΩ

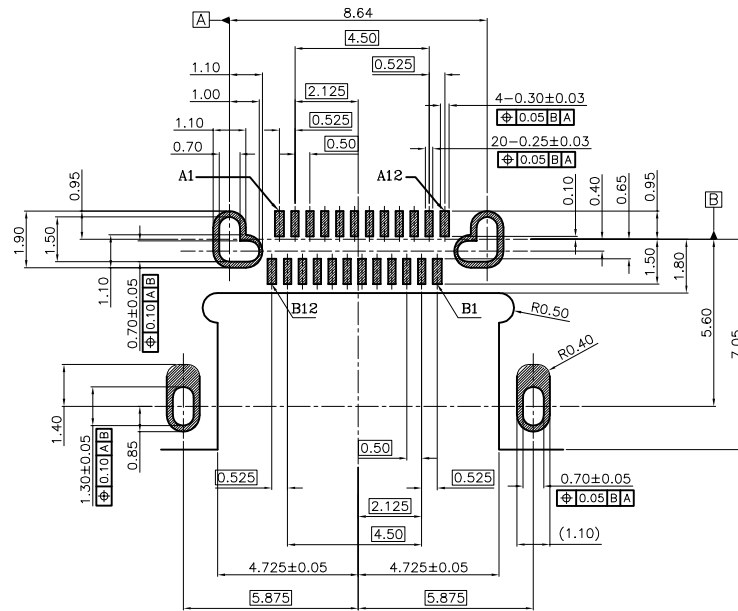
3. ENVIRONMENTAL:  
 STORAGE TEMPERATURE: -40°C TO +85°C  
 OPERATION TEMPERATURE: -40°C TO +85°C  
 IR REFLOW PEAK SOLDERING TEMPERATURE: 255°C TO 265°C (5-10 SECONDS)



		<b>RoHS Compliant</b>			
TOLERANCES EXCEPT AS NOTED					
DETACHED LISTS .0 ± 0.25 .00 ± 0.20 .000 ± 0.10	MM		TITLE USB 3.1 TYPE-C CONN, RECEPTACLE - MID MOUNT, SMT		
	INCH		DFTO: Lynn DATE: 09/30/2015 SCALE: 2:1	DRAWING NO. CE8124-001-01 /PART NO. E8124-001-01	SIZE A3 REV 2
	ANGLES ± 1°		DO NOT SCALE DRAWING		SHEET 1 OF 2

REVISION RECORD		
REV	DESCRIPTION	DRAFT

USB TYPE-C FULL-FEATURED RECEPTACLE INTERFACE PIN ASSIGNMENTS



RECOMMEND PCB LAYOUT  
(THICKNESS: 1.00 OR 1.20mm)

PIN	Signal Name	Description	PIN	Signal Name	Description
A1	GND	Ground return	B12	GND	Ground return
A2	SSTXp1	Positive half of first SuperSpeed TX differential pair	B11	SSRXp1	Positive half of first SuperSpeed RX differential pair
A3	SSTXn1	Negative half of first SuperSpeed TX differential pair	B10	SSRXn1	Negative half of first SuperSpeed RX differential pair
A4	VBUS	Bus Power	B9	VBUS	Bus Power
A5	CC1	Configuration Channel	B8	SBU2	Sideband Use (SBU)
A6	Dp1	Positive half of the USB 2.0 differential pair-Position 1	B7	Dn2	Negative half of the USB 2.0 differential pair-Position 2
A7	Dn1	Negative half of the USB 2.0 differential pair-Position 1	B6	Dp2	Positive half of the USB 2.0 differential pair-Position 2
A8	SBU1	Sideband Use (SBU)	B5	CC2	Configuration Channel
A9	VBUS	Bus Power	B4	VBUS	Bus Power
A10	SSRXn2	Negative half of second SuperSpeed RX differential pair	B3	SSTXn2	Negative half of second SuperSpeed TX differential pair
A11	SSRXp2	Positive half of second SuperSpeed RX differential pair	B2	SSTXp2	Positive half of second SuperSpeed TX differential pair
A12	GND	Ground return	B1	GND	Ground return

		<b>RoHS Compliant</b>			
TOLERANCES EXCEPT AS NOTED					
DIMENSIONS LISTED	MM		<b>TITLE</b> USB 3.1 TYPE-C CONN, RECEPTACLE – MID MOUNT, SMT		
	.0 ± 0.25	±			
	.00 ± 0.20	±			
200 ± 0.10	±				
ANGLES ± 1°		DFTD: Lynn	DRAWING NO. CE8124-001-01		SIZE A3
		DATE: 09/30/2015	/PART NO. E8124-001-01		REV 2
THIRD ANGLE PROJECTION		SCALE: 2:1	DO NOT SCALE DRAWING		SHEET 2 OF 2