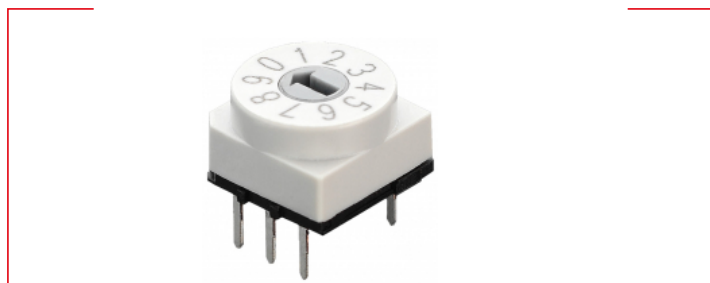


**Technical data // P65THR 1 01 - TR**

Rotary Code Switch

Through Hole Reflow

**Highlights**

- Solid PCB pins
- Contacts with abrasion resistant hard gold plating
- ESD-protection on request
- 100 % electronic inspection and testing

Mechanical Data

Type	horizontal
Fixation mode	THR
Height	6.5 mm
Length	10.0 mm
Width	10.0 mm
Pin connection	3+3
Perm. ambient temperature	-60 °C ... +125 °C
Perm. storage temperature	-65 °C ... +135 °C
Torque	(typically) 1.3 Ncm
Mechanical lifetime	30.000 steps
Reflow soldering	JDEC J-STD-020 E
Wave soldering	Double Wave acc. DIN EN 61760-1:2006
Iron soldering	2 s / 340 °C
THR through holes	plated through
THR PCB hole diameter	1.0 mm
Outside diameter plated land	1.8 mm

Electrical Data

Operating voltage	≤ 42.0 V
Standby current	≤ 0.2 A
Contact load, dynamic	≤ 0.1 A
Minimum load	1.0 μ A 20mVDC
Test voltage	250.0 V 50 Hz / 1.0 min
Contact resistance	< 80.0 mOhm
Insulation resistance	> 100.0 MOhm



PTR HARTMANN

A Phoenix Mecano Company

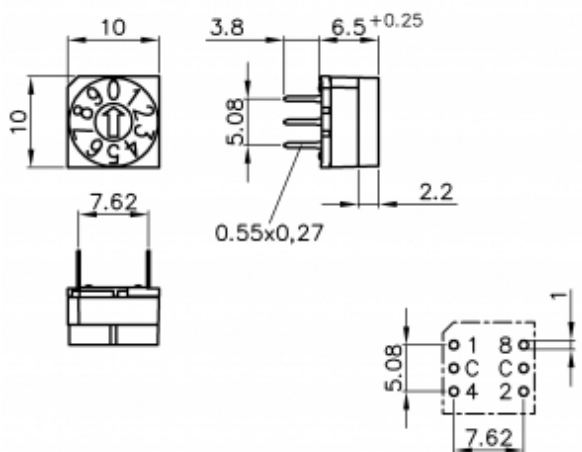
Technical data

// P65THR 1 01 - TR

Rotary Code Switch

Through Hole Reflow

Technical Drawing



Configuration

Actuators



Arrow-shaped slot



Technical data

// P65THR 1 01 - TR

Rotary Code Switch

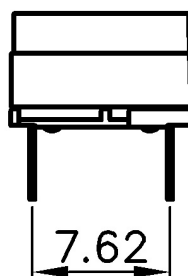
Through Hole Reflow

Codes

BCD Typ 01					
	C	1	2	4	8
0	●				0
1	●	●			1
2	●		●		2
3	●	●	●		3
4	●			●	4
5	●	●		●	5
6	●		●	●	6
7	●	●	●	●	7
8	●				●
9	●	●			●

BCD, Pos 10

Contact pins



straight



PTR HARTMANN

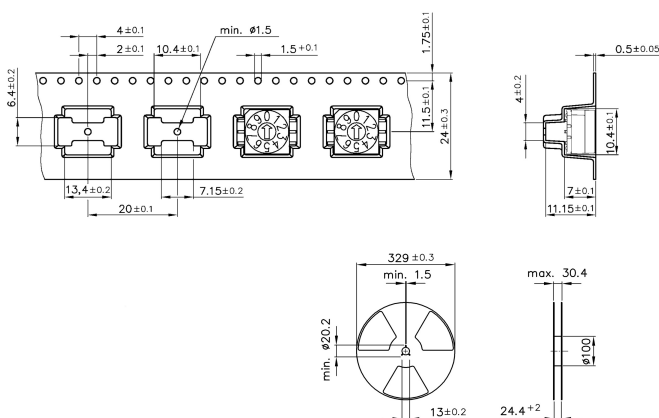
A Phoenix Mecano Company

Technical data

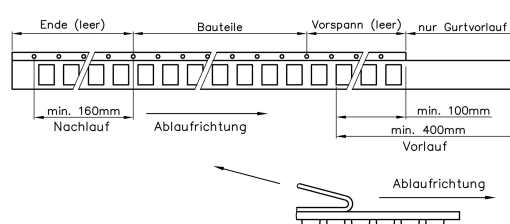
// P65THR 1 01 - TR

Rotary Code Switch
Through Hole Reflow

Packing



Gurtvorlauf und -nachlauf



Öffnungswinkel der Abdeckung: 165°–180°
Öffnungsgeschwindigkeit: 300 ±10mm/Minute

Tape on Reel Packing