



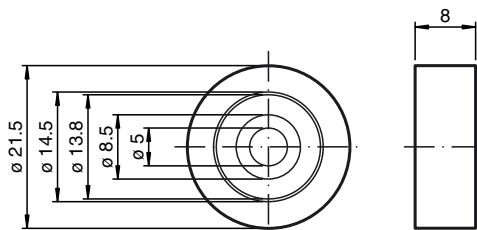
- Wheel, plastic for guide trolley WCS 2

WCS2-GT-WL-P

**Technical data**

General specifications	
Description	grooved ball bearing acc. to DIN 625 625 2ZR
Ambient conditions	
Ambient temperature	0 ... 60 °C (273 ... 333 K)
Mechanical specifications	
Material	tread surface: Polyurethane (PUR) elastomer 93 shore A
Mass	7 g

**Dimensions**



Date of edition 2008-12-16