

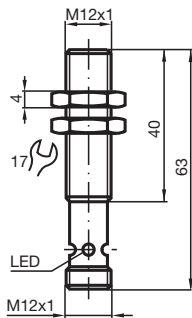
Magnetic field sensor MC60-12GM50-1N-V1



- 60 mm flush with permanent magnet DM 60-31-15



Dimensions



Technical Data

General specifications

Switching function		Normally open (NO)
Output type		NAMUR
Rated operating distance	s_n	60 mm
Installation		flush in non-magnetic metal
Assured operating distance	s_a	10 ... 48.6 mm
Output type		2-wire

Nominal ratings

Nominal voltage	U_o	8.2 V (R_i approx. 1 k Ω)
Switching frequency	f	0 ... 5000 Hz
Current consumption		
Magnet detected		≥ 2.5 mA
Magnet not detected		≤ 1 mA

Release date: 2020-05-04 Date of issue: 2020-05-05 Filename: 183132_eng.pdf

Refer to "General Notes Relating to Pepperl+Fuchs Product Information".

Pepperl+Fuchs Group
www.pepperl-fuchs.com

USA: +1 330 486 0001
fa-info@us.pepperl-fuchs.com

Germany: +49 621 776 1111
fa-info@de.pepperl-fuchs.com

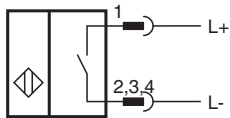
Singapore: +65 6779 9091
fa-info@sg.pepperl-fuchs.com

PF PEPPERL+FUCHS

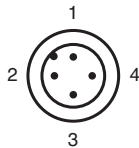
Technical Data

Switching state indicator	LED, yellow
Functional safety related parameters	
MTTF _d	4382 a
Mission Time (T _M)	20 a
Diagnostic Coverage (DC)	0 %
Compliance with standards and directives	
Standard conformity	
NAMUR	EN 60947-5-6:2000
Standards	EN 60947-5-2:2007 EN 60947-5-2/A1:2012 IEC 60947-5-2:2007 IEC 60947-5-2 AMD 1:2012
Approvals and certificates	
FM approval	
Control drawing	116-0165
CCC approval	CCC approval / marking not required for products rated ≤36 V
Ambient conditions	
Ambient temperature	-25 ... 70 °C (-13 ... 158 °F)
Mechanical specifications	
Connection type	Connector plug M12 x 1 , 4-pin
Housing material	stainless steel 1.4404 / AISI 316L
Sensing face	stainless steel 1.4404 / AISI 316L
Degree of protection	IP67
General information	
Use in the hazardous area	see instruction manuals

Connection

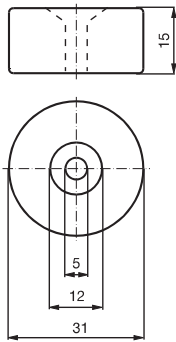


Connection Assignment

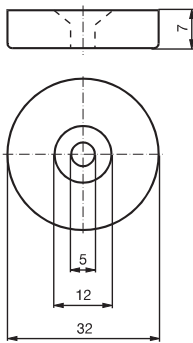


Additional Information







Magnet DM 60-31-15



Magnet DM 25-32-07



Accessories

	BF 12	Mounting flange, 12 mm
	EXG-12	Quick mounting bracket with dead stop
	DM 60-31-15	Permanent magnet for magnetic field sensors
	DM 25-32-07	Permanent magnet for magnetic field sensors
	V1-G-N-2M-PUR	Female cordset, M12, 2-pin, NAMUR, PUR cable
	V1-W-N-2M-PUR	Female cordset, M12, 2-pin, NAMUR, PUR cable

Release date: 2020-05-04 Date of issue: 2020-05-05 Filename: 183132_eng.pdf