

# Cool Boot® Raised Floor Air Sealing Grommet

# PANDUIT®

SPECIFICATION SHEET

## specifications

All raised floor cutouts that allow communications cable to pass through in the hot aisle/cold aisle environment of a data center shall be equipped with a grommet to minimize bypass airflow. This grommet shall provide sealing properties for multiple cable bundles placed anywhere within the cable cutout. The grommet shall be designed to allow for new and retrofit applications and shall be available in multiple sizes to allow compatibility with vertical cable managers and cabinets. A low profile design is required that shall not have rigid features higher than 0.710 inches above the raised floor surface. The inside edge of the hole in the raised floor shall be covered to protect cables from abrasion as they pass through the raised floor.



## technical information

<b>Material for molded outer ring:</b>	Electrostatic dissipative, flame retardant polycarbonate
<b>Material for integral gasket:</b>	Flame retardant thermoplastic vulcanizate
<b>Material for airtight fabric:</b>	Electrostatic dissipative, flame retardant, vinyl coated fabric
<b>Temperature range:</b>	-40°F to 140°F (-40°C to 60°C)
<b>RoHS compliance:</b>	Material is RoHS compliant per European Directive 2002/95/EC on the Restriction of Hazardous Substances (RoHS)
<b>NEC compliance:</b>	Product complies with Article 645 Section 5(D)(4) of the 2005 National Electrical Code
<b>Flammability:</b>	Outer ring and gasket material passes UL94 standard, V-0 and fabric material passes FAR 25.853 for flammability
<b>Electrostatic dissipating properties:</b>	Product provides 10 <sup>6</sup> – 10 <sup>7</sup> ohms of resistance
<b>Packaging:</b>	Part numbers ending in "SMY" – Cool Boot® Raised Floor Air Sealing Grommet consisting of airtight fabric with Tak-Ty® Closure System secured to a molded polycarbonate outer ring and self-tapping screws (used for retrofit applications); part numbers without "SMY" suffix – Cool Boot® Raised Floor Air Sealing Grommet consisting of airtight fabric with Tak-Ty® Closure System secured to a molded polycarbonate outer ring, integral gasket, and self-tapping screws (used for new installations)

## key features and benefits

<b>Airtight fabric</b>	Minimizes bypass airflow through cutouts in the raised floor tile to improve cooling of network equipment and prevents debris from falling below raised floor
<b>Electrostatic dissipating materials</b>	Provides a pathway to ground to reduce the chance of corrupting network equipment with electric shock
<b>Hook and loop cinch tie</b>	Provides closure at top of fabric to prevent air from escaping around cable bundles
<b>Vertical hook and loop material</b>	Allows installation on existing cable bundles for greater system flexibility
<b>Integrated horizontal hook and loop closure system</b>	Enables two or more bundles to be separated which provides ability to run power and data in the same opening while preventing degradation of cable performance
<b>Flexible polycarbonate outer ring</b>	Houses fabric which secures product to raised floor tile; slit allows for retrofit installations even when vertical cable managers are already in place
<b>Flexible integral gasket</b>	Utilized on new installations to cover sharp edges of cut floor tile to prevent damage to cable
<b>Flame retardant materials</b>	Meets requirements to assure compliance with codes and standards for maximum performance
<b>Screw holes</b>	Enables grommet to attach to floor while providing a pathway to ground

## applications

The Panduit® Cool Boot® Raised Floor Air Sealing Grommet is designed for hot aisle/cold aisle environments in a data center where cables pass through a cutout in the raised floor. The grommet reduces bypass airflow improving the cooling of network equipment and prevents debris from falling below the raised floor. The grommet is utilized in applications that require cable bundles, such as data and power, to be separated as well as applications that create one cable bundle. The grommet can be used in new or retrofit applications.

The grommet is designed for use with Panduit® PatchRunner™ and NetRunner™ Vertical Cable Managers as well as Net-Access™ Cabinet to cost-effectively manage sensitive network cables in compliance with the TIA/EIA standards and the NEC. The Panduit® Cool Boot® Raised Floor Grommet leverages innovative design features to speed installation and is part of the complete range of cable management accessories available from Panduit to help maximize management and control of the physical infrastructure.

[www.panduit.com](http://www.panduit.com)

### Cool Boot® Raised Floor Air Sealing Grommet (New Installations)

6" x 8":	RFG6X8Y
8" x 8":	RFG8X8Y
10" x 8":	RFG10X8Y
12" x 8":	RFG12X8Y
12" x 4":	RFG12X4Y
4.5" diameter:	RFG3DY
6.5" diameter:	RFG5DY

### Cool Boot® Raised Floor Air Sealing Grommet (Retrofit Applications)

6" x 8":	RFG6X8SMY
8" x 8":	RFG8X8SMY
10" x 8":	RFG10X8SMY
12" x 8":	RFG12X8SMY
12" x 4":	RFG12X4SMY
4.5" diameter:	RFG3DSMY
6.5" diameter:	RFG5DSMY

### PatchRunner™ Vertical Cable Management System

Front and rear 15" wide:	PRV15
Front and rear 12" wide:	PRV12
Front and rear 10" wide:	PRV10
Front and rear 8" wide:	PRV8
Front and rear 6" wide:	PRV6
Front 15" wide:	PRVF15
Front 12" wide:	PRVF12
Front 10" wide:	PRVF10
Front 8" wide:	PRVF8
Front 6" wide:	PRVF6

### PatchRunner™ High-Capacity Vertical Cable Managers - 7 Foot

<b>Dual-sided</b>	
6" wide:	PEV6
8" wide:	PEV8
10" wide:	PEV10
12" wide:	PEV12
<b>Single sided</b>	
6" wide:	PEVF6
8" wide:	PEVF8
10" wide:	PEVF10
12" wide:	PEVF12

### NetRunner™ Vertical Cable Management System

Front and rear manager, high capacity:	WMPVHC45E
Front and rear manager, standard capacity:	WMPV45E
Front only manager, high capacity:	WMPVHCF45E
Front only manager, standard capacity:	WMPVF45E

### NetRunner™ High-Capacity Vertical Cable Managers

Front and rear 45 RU 6" x 6":	NRV6
45 RU 10" x 6":	NRV10
45 RU 12" x 6":	NRV12
Front only 45 RU 6" x 6":	NRVF6
45 RU 10" x 6":	NRVF10
45 RU 12" x 6":	NRVF12

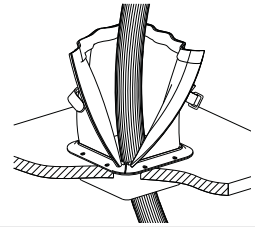
### Net-Access™ Cabinet

45 RU switch cabinet with side panels, front and rear doors:	CN1
45 RU switch cabinet with front and rear doors:	CN2
45 RU switch cabinet:	CN3
45 RU server cabinet with side panels, front and rear doors:	CS1
45 RU server cabinet with front and rear doors:	CS2
45 RU server cabinet:	CS3

# Cool Boot® Raised Floor Air Sealing Grommet

## Cool Boot® Raised Floor Air Sealing Grommet – New Installation

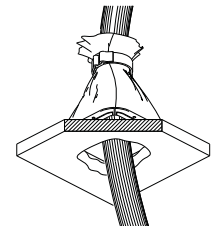
(Integral gasket protects cables from abrasion against cut raised floor tile)



Part Number	Overall Dimensions	Required Hole Cutout	Cable Capacity	Complementary Patch-Runner™ Products	Complementary Net-Runner™ Products	Complementary Net-Access™ Products	Maximum Cable Capacity		
							Cat. 6A (0.300")	Cat. 6 (0.240")	Cat. 5e (0.225")
RFG6X8Y	6" x 8"	4.5" x 6.5"	4.2" x 6.2"	PEV8, PEVF8 PRV6, PRVF6	WMPVHC45E, WMPVHCF45E, NRV6, NRVF6, NRV10, NRVF10, NRV12, NRVF12	—	183	287	326
RFG8X8Y	8" x 8"	6.5" x 6.5"	6.2" x 6.2"	PEV10, PEVF10 PRV8, PRVF8	—	—	271	424	482
RFG10X8Y	10" x 8"	8.5" x 6.5"	8.2" x 6.2"	PEV12, PEVF12 PRV10, PRVF10	—	—	359	561	638
RFG12X4Y	12" x 4"	10.5" x 2.5"	10.2" x 2.2"	PEV6, PEVF6	NRV12, NRVF12, WMPV45E	Single CN1, CN2, CN3, CS1, CS2, and CS3	158	247	281
RFG12X8Y	12" x 8"	10.5" x 6.5"	10.2" x 6.2"	PEV10, PEVF10, PEV12, PEVF12, PEV15, PEVF15, PRV12, PRVF12, PRV15, PRVF15	—	Ganged CN1, CN2, CN3, CS1, CS2, and CS3	447	698	794
RFG3DY	4.5" Diameter	3" Diameter	2.7" Diameter	PEV6, PEVF6	WMPV45E, WMPVF45E	—	40	62	71
RFG5DY	6.5" Diameter	5" Diameter	4.7" Diameter	—	WMPVHC45E, WMPVHCF45E	—	122	191	217

## Cool Boot® Raised Floor Air Sealing Grommet – Retrofit Application

(Secured to top of raised floor tile)



Part Number	Overall Dimensions	Required Hole Cutout	Cable Capacity	Complementary Patch-Runner™ Products	Complementary Net-Runner™ Products	Complementary Net-Access™ Products	Maximum Cable Capacity		
							Cat. 6A (0.300")	Cat. 6 (0.240")	Cat. 5e (0.225")
RFG6X8SMY	6" x 8"	Less than 4.5" x 6.5"	4.2" x 6.2"	PEV8, PEVF8 PRV6, PRVF6	WMPVHC45E, WMPVHCF45E, NRV6, NRVF6, NRV10, NRVF10, NRV12, NRVF12	—	183	287	326
RFG8X8SMY	8" x 8"	Less than 6.5" x 6.5"	6.2" x 6.2"	PEV10, PEVF10 PRV8, PRVF8	—	—	271	424	482
RFG10X8SMY	10" x 8"	Less than 8.5" x 6.5"	8.2" x 6.2"	PEV12, PEVF12 PRV10, PRVF10	—	—	359	561	638
RFG12X4SMY	12" x 4"	Less than 10.5" x 2.5"	10.2" x 2.2"	PEV6, PEVF6	NRV12, NRVF12, WMPV45E	Single CN1, CN2, CN3, CS1, CS2, and CS3	158	247	281
RFG12X8SMY	12" x 8"	Less than 10.5" x 6.5"	10.2" x 6.2"	PEV10, PEVF10, PEV12, PEVF12, PEV15, PEVF15, PRV12, PRVF12, PRV15, PRVF15	—	Ganged CN1, CN2, CN3, CS1, CS2, and CS3	447	698	794
RFG3DSMY	4.5" Diameter	Less than 3" Diameter	2.7" Diameter	PEV6, PEVF6	WMPV45E, WMPVF45E	—	40	62	71
RFG5DSMY	6.5" Diameter	Less than 5" Diameter	4.7" Diameter	—	WMPVHC45E, WMPVHCF45E	—	122	191	217

### WORLDWIDE SUBSIDIARIES AND SALES OFFICES

PANDUIT CANADA  
Markham, Ontario  
cs-cdn@panduit.com  
Phone: 800.777.3300

PANDUIT EUROPE LTD.  
London, UK  
cs-emea@panduit.com  
Phone: 44.20.8601.7200

PANDUIT SINGAPORE PTE. LTD.  
Republic of Singapore  
cs-ap@panduit.com  
Phone: 65.6305.7575

PANDUIT JAPAN  
Tokyo, Japan  
cs-japan@panduit.com  
Phone: 81.3.6863.6000

PANDUIT LATIN AMERICA  
Guadalajara, Mexico  
cs-la@panduit.com  
Phone: 52.33.3777.6000

PANDUIT AUSTRALIA PTY. LTD.  
Victoria, Australia  
cs-aus@panduit.com  
Phone: 61.3.9794.9020

For a copy of Panduit product warranties, log on to [www.panduit.com/warranty](http://www.panduit.com/warranty)

For more information

Visit us at [www.panduit.com](http://www.panduit.com)

Contact Customer Service by email: [cs@panduit.com](mailto:cs@panduit.com)  
or by phone: 800.777.3300 and reference WASP03

**PANDUIT**®

©2011 Panduit Corp.  
ALL RIGHTS RESERVED.

WW-WASP03

6/2011