

### Data-Patch™ Category 5e RJ21 to RJ45 Patch Panel

- Designed to exceed ANSI/TIA-568-C.2 Category 5e and ISO 11801 2nd Edition Class D standards
- Consist of female telco 50-pin/25-pair connectors with hook and loop fasteners wired per RJ21 industry standard for backward compatibility
- Each RJ45 port is fully wired for 10/100/1000BASE-T Ethernet performance utilizing all 8 pins
- Does not require use of a punchdown tool
- Mounts to standard EIA 19" rack or 23" racks with optional extender bracket
- Write-on areas for port and panel identification
- Can be clearly identified with labels and icons
- Optional label kits (DPLK24 and DPLK48) contain adhesive label holder and labels for easy port and panel identification



DPA245E88TV25



DPA485E88TV25



DP245E88TV25

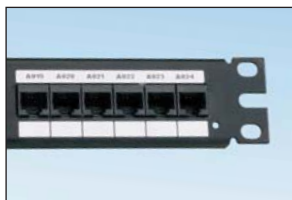


DP485E88TV25

Part Number	Part Description	No. of Rack Spaces <sup>^</sup>	Std. Pkg. Qty.	Std. Ctn. Qty.
<b>Data-Patch™ 10/100/1000BASE-T RJ21 to RJ45 Angled Patch Panels</b>				
DPA245E88TV25	24-port angled, Category 5e, RJ45, 8-pin, fully wired to 4-port RJ21 connector panel.	1	1	10
DPA485E88TV25	48-port angled, Category 5e, RJ45, 8-pin, fully wired to 8-port RJ21 connector panel.	2	1	10
<b>Data-Patch™ 10/100/1000BASE-T RJ21 to RJ45 Flat Patch Panels</b>				
DP245E88TV25	24-port, Category 5e, RJ45, 8-pin, fully wired to 4-port RJ21 connector panel.	1	1	10
DP485E88TV25	48-port, Category 5e, RJ45, 8-pin, fully wired to 8-port RJ21 connector panel.	2	1	10

<sup>^</sup>One rack space = 1.75" (44.45mm).  
M6 and #12-24 mounting screws included.  
Data-Patch™ 10/100/1000BASE-T Cable Assemblies available on page B.52 of SA-NCCB51.

### Component Labels for Data-Patch™ Category 5e RJ21 to RJ45 Patch Panel



Suggested Label Solutions for TIA/EIA-606-A Compliance				
Part Number	Laser/Ink Jet Desktop Printer Label	TDP43ME Thermal Transfer Desktop Printer Label	PanTher™ LS8E Hand-Held Printer Label	Cougar™ LS9 Hand-Held Printer Label
DPA245E88TV25 DPA485E88TV25 DP245E88TV25 DP485E88TV25	C379X030FJJ	C379X030YPT	C379X030FJC	T031X000FJC-BK

For complete labeling solutions and product information, reference charts on pages O.1 – O.22 of SA-NCCB51.